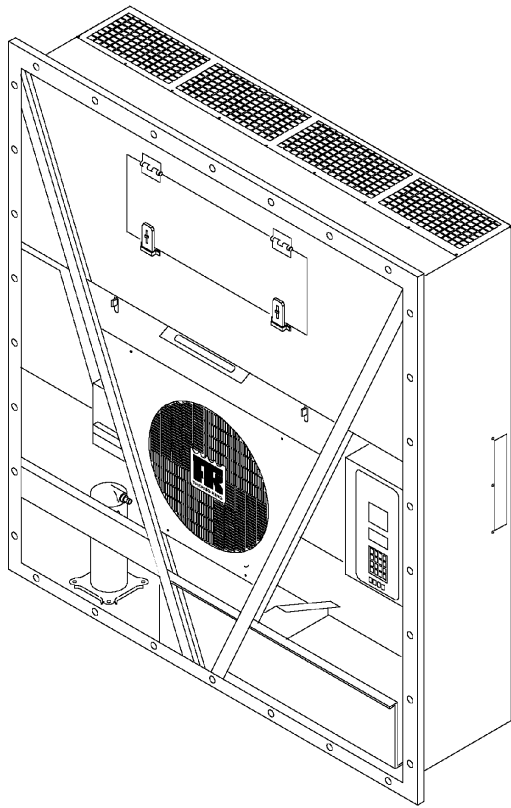


MAGNUM PLUS

TK 54356-0.0



Printed (September 22, 2009)

Copyright © 2009 - Thermo King Corp. - Minneapolis, MN U.S.A.
Electronically printed in U.S.A.

General Information

Tables of Contents

This Parts Manual contains a numerical table of contents listing each assembly name, its associated Grid number and page number. The numerical table of contents is arranged numerically by Grid number. There are references in a parts list referring to other Grid numbers, the numerical table of contents is arranged to facilitate finding the referenced illustrations. At the rear of this parts manual are two indexes, a numerical and alphabetical. The indexes contain all of the part numbers and descriptions which appear in this manual.

Assemblies and Subassemblies

When parts are indented in the description list, they are preceded with a bullet (•). This indicates that the part(s) is available separately or included in an assembly.

GRID NO. 67D6 SWITCH PANEL ASSEMBLY

REF	PART#	DESCRIPTION	QTY
	45-1239	PANEL - assy, switch	1
1	99-1960	• PANEL	1
	99-6280	• • NAMEPLATE - panel	1
2	33-743	• GASKET	1

For example: the switch panel nameplate (99-6280) is available separately, available as part of the switch panel (99-1960) and with the panel assembly (45-1239).

ABBREVIATIONS

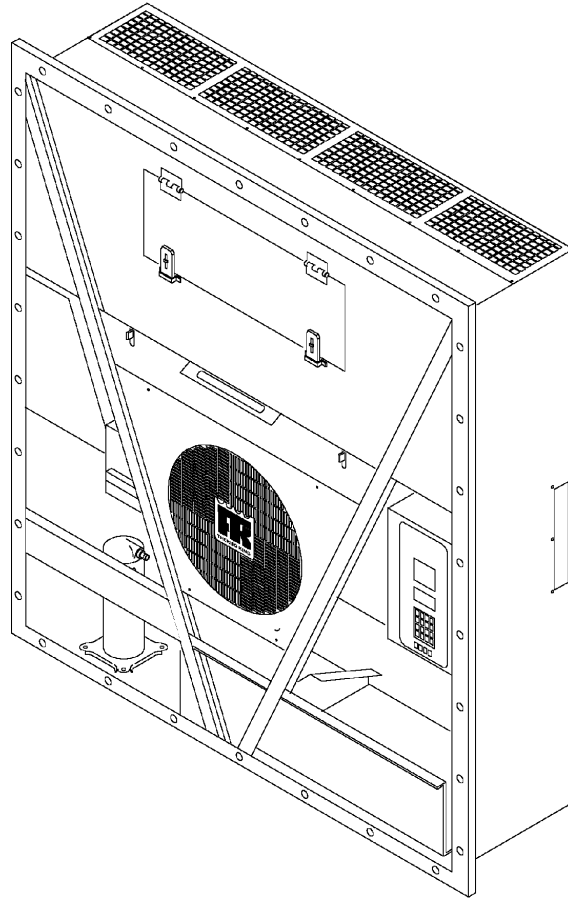
The following abbreviations appear in parts manuals

A AC alternating current	E (continued)	O os oversized
A/R as required	evap. evaporator	od outside diameter
accum accumulator	exch exchanger	P pcb printed circuit board
adj adjusting	exp expansion	pkg package
al aluminum	ext external	ph phase
alt. alternator	F F Fahrenheit	pos positive
A or amp ampere	fill fillister	psi pounds per square inch
assy assembly	fi fuel injection	
B bd board	fl flare	R rad radiator
brg bearing	fpt female pipe thread	rcvr receiver
brkr breaker	ft feet	ref reference
brkt bracket	ftg fitting	reg regulator
C C Celsius	H hex hexagon	req required
cw clockwise	hh hexagon head	rpm revolutions per minute
ccw counter-clockwise	hd head	S sec second
cam camshaft	hp horsepower	sld solder
compr compressor	hsg housing	soc hd. socket head
cond. condenser	I id inside diameter	sol solenoid
conn. connecting, connector	in inch (2.54 centimeters)	spl special
cyl cylinder	incl includes	sq square
D def defrost	inj injection	ss stainless steel
deg degree	int internal	std. standard
dehyd. dehydrator	int th internal tooth	stl steel
dia diameter	L liq liquid	suct. suction
DC direct current	lg long	sw switch
disch discharge	M mm millimeter	T term terminal
diff differential	mpt male pipe thread	temp temperature
E EMI Extended	mod modulating	thk. thick
. Maintenance Interval	N neg negative	U us undersize
EEC European Economic Community	No. number	V vib vibrasorber
eng engine	NS not supplied	W W watt
	NSS not sold separately	w/ with
		w/o without

MAGNUM PLUS

Contents

Name	Grid	Page
MAGNUM PLUS REFERENCE SHEET14U3.3
AIR VENT (40 FT CONTAINERS).143D7.27
COMPRESSOR GROUP (SERVICE VALVES)180E1.15
NAMEPLATES.180E6.33
DEFROST DRAIN189C4.31
REFRIGERATION COMPONENTS (SERVICE VALVES)235E0.11
CONDENSER FAN GROUP235E8.5
EVAPORATOR FAN GROUP235E9.7
ELECTRICAL COMPONENTS235G1.17
CONTROL BOX (MP-4000).235G2.19
CONTROL BOX DOOR (MP-4000).235G3.21
USDA DOWNLOAD PANEL235G4.23
CONDENSER COMPONENTS.235G5.25
EVAPORATOR PANELS.235G6.29



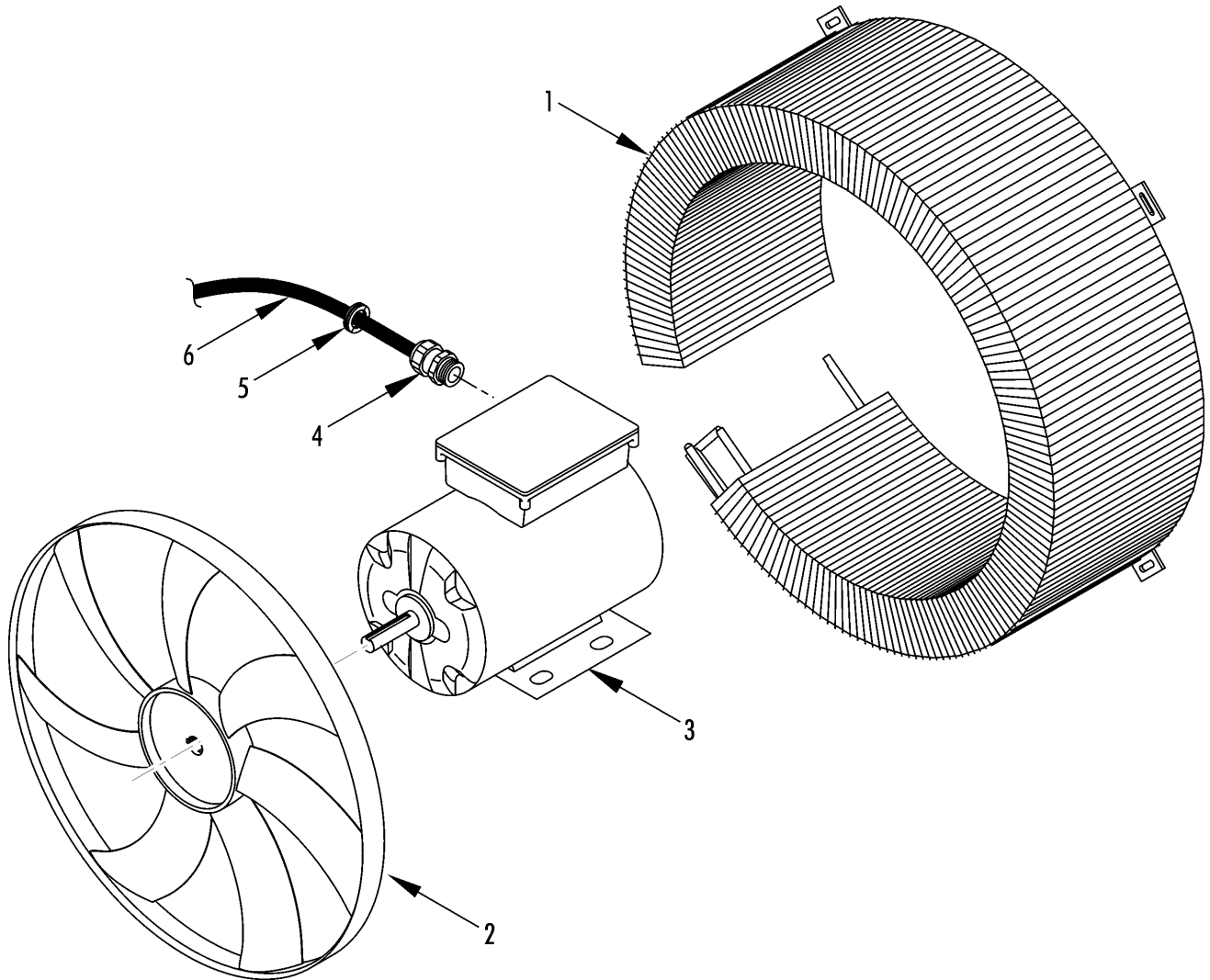
Revised
6/10/09

MAGNUM PLUS REFERENCE SHEET



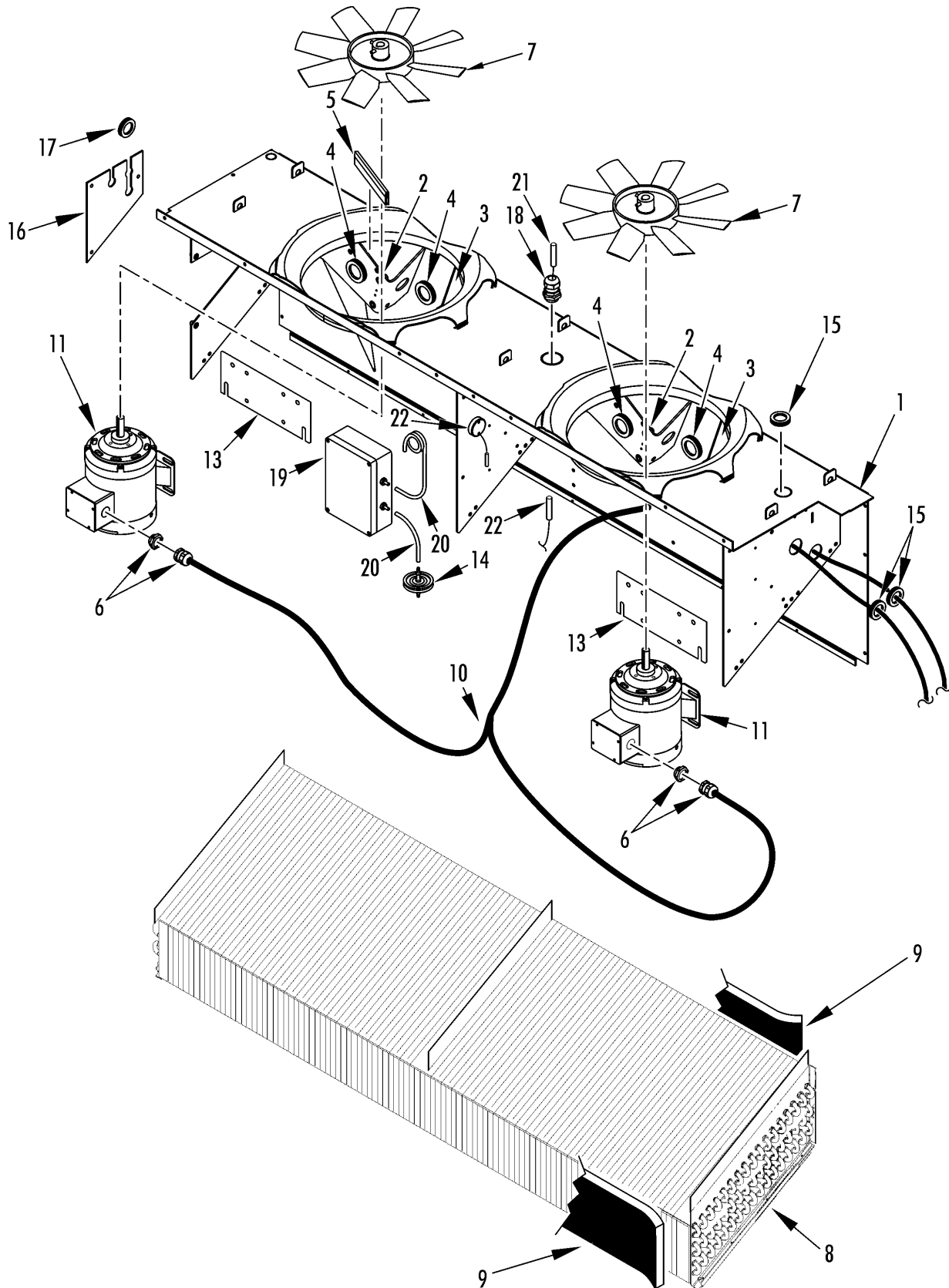
14U3

B/M	DESCRIPTION	Date
098203	MAGNUM PLUS	3/09



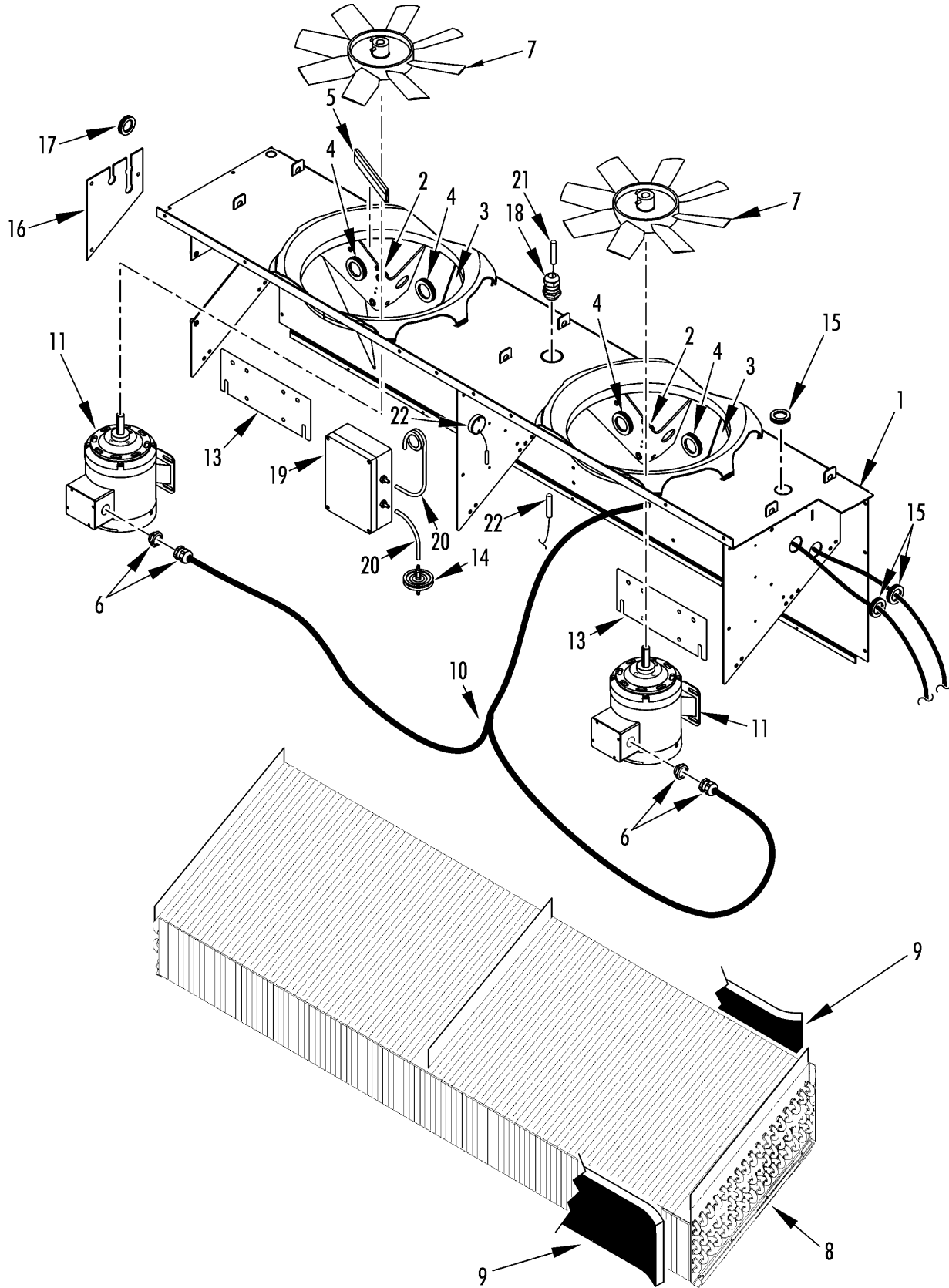


REF	PART#	DESCRIPTION	QTY
1	60-285	COIL - condenser	1
	33-2950	GASKET (10 x 15 mm)	A/R
	51-1442	SCREW - coil	7
	51-1444	FLATWASHER	7
	55-9054	WASHER (nylon)	7
2	78-1684	FAN - condenser (21.6 in, 500 mm dia, 30 deg pitch, 8 blade)	1
3	104-759	MOTOR - condenser fan (0.75 hp)	1
	51-1443	SCREW - motor	4
	51-1444	FLATWASHER	8
	51-1429	LOCKWASHER	4
	51-1427	NUT	4
4	55-5900	GRIP - cable	1
5	33-367	GROMMET	1
6	41-2953	HARNESS - condenser fan	1





REF	PART#	DESCRIPTION	QTY
1	98-8242	HOUSING - evaporator (12 in, 312 mm dia)	1
2	92-2779	• BRACKET - motor (left)	2
3	92-2332	• BRACKET - motor (right)	2
	55-9162	RIVET - housing	10
4	33-3917	GROMMET (1.180 in)	4
5	33-3929	TRIM - edge guard	A/R
6	55-5900	CONNECTOR - harness & sensor	2
7	78-1683	FAN - evaporator (14 in, 355 mm dia)	2
8	NSS	COIL - evaporator (see Refrigeration Group)	1
	51-1447	SCREW - coil	10
	55-9217	CAP - screw	3
9	91-9328	BLOCK - coil	2
10	41-3685	HARNESS - evaporator fan	1
11	104-691	MOTOR - fan	2
	51-1869	SCREW - motor	8
	51-1429	LOCKWASHER	8
	51-1444	FLATWASHER	8
	51-1427	NUT	8
12	41-5635	SENSOR - humidity	1
	51-1461	SCREW	2
	51-1870	CAP - tube	2
13	91-8466	BRACKET - motor	2
	51-1869	SCREW - bracket	8
	51-1444	FLATWASHER	8
	51-1429	LOCKWASHER	8
	51-1427	NUT	8
14	92-458	FILTER - gas sensor	1
15	33-2946	GROMMET (37 mm)	4
16	92-2775	COVER - tube	1
	51-1422	SCREW	3
	51-1441	FLATWASHER	3
	51-619	WASHER - insulator	3
17	33-367	GROMMET	4
18	51-270	CONNECTOR - liquid tite	1
19	41-3409	SENSOR - gas (O2/CO2)	1
	41-5814	SENSOR - gas (CO2 only)	1
	41-7143	SENSOR - gas (O2 only)	1
	51-1442	SCREW	2
	51-619	WASHER - insulator	2
	51-1441	FLATWASHER	2
	55-9698	INSERT	2
20	11-4367	HOSE - sensor (1/4 od x 35 ft lg)	A/R



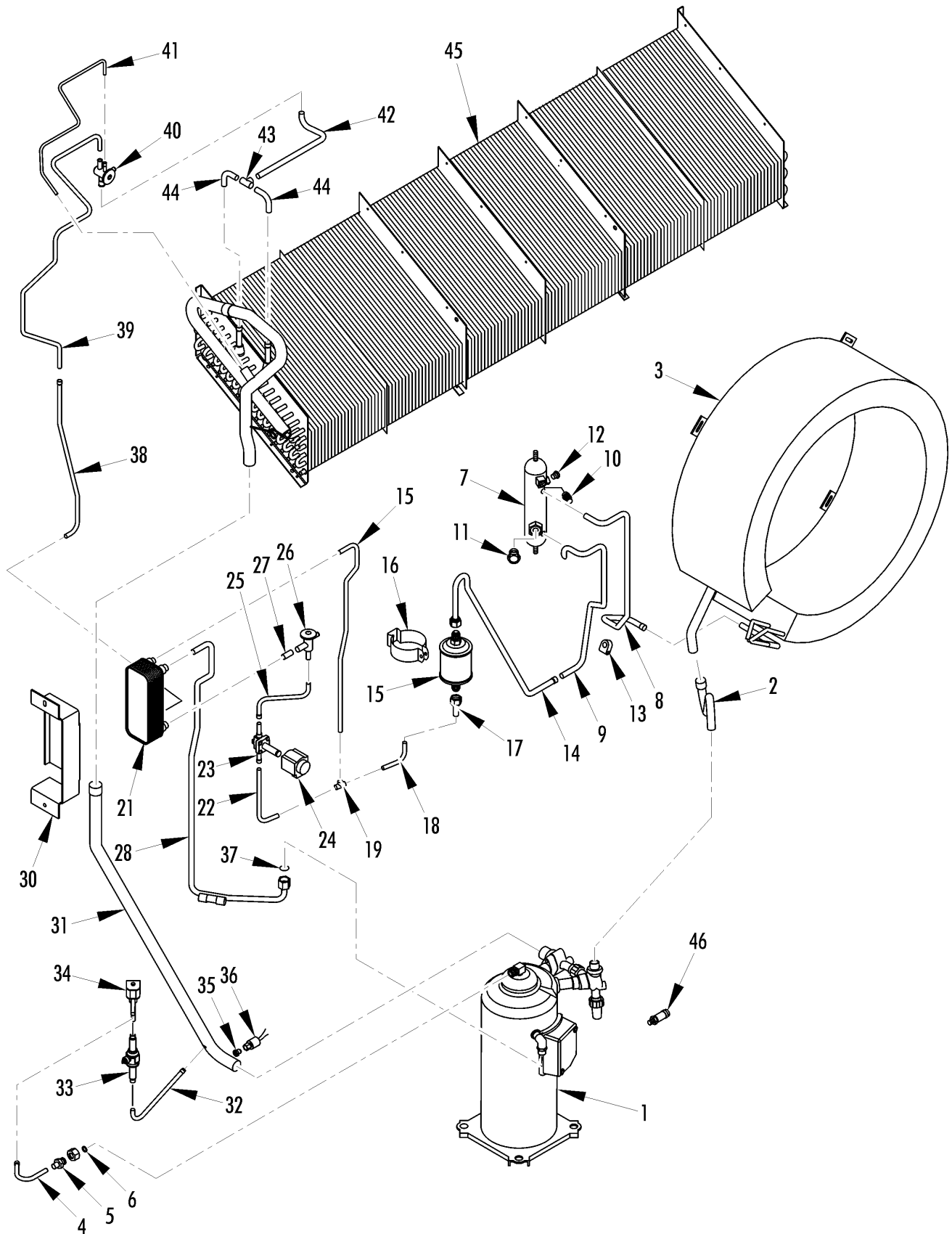
Revised
9/15/09

EVAPORATOR FAN GROUP



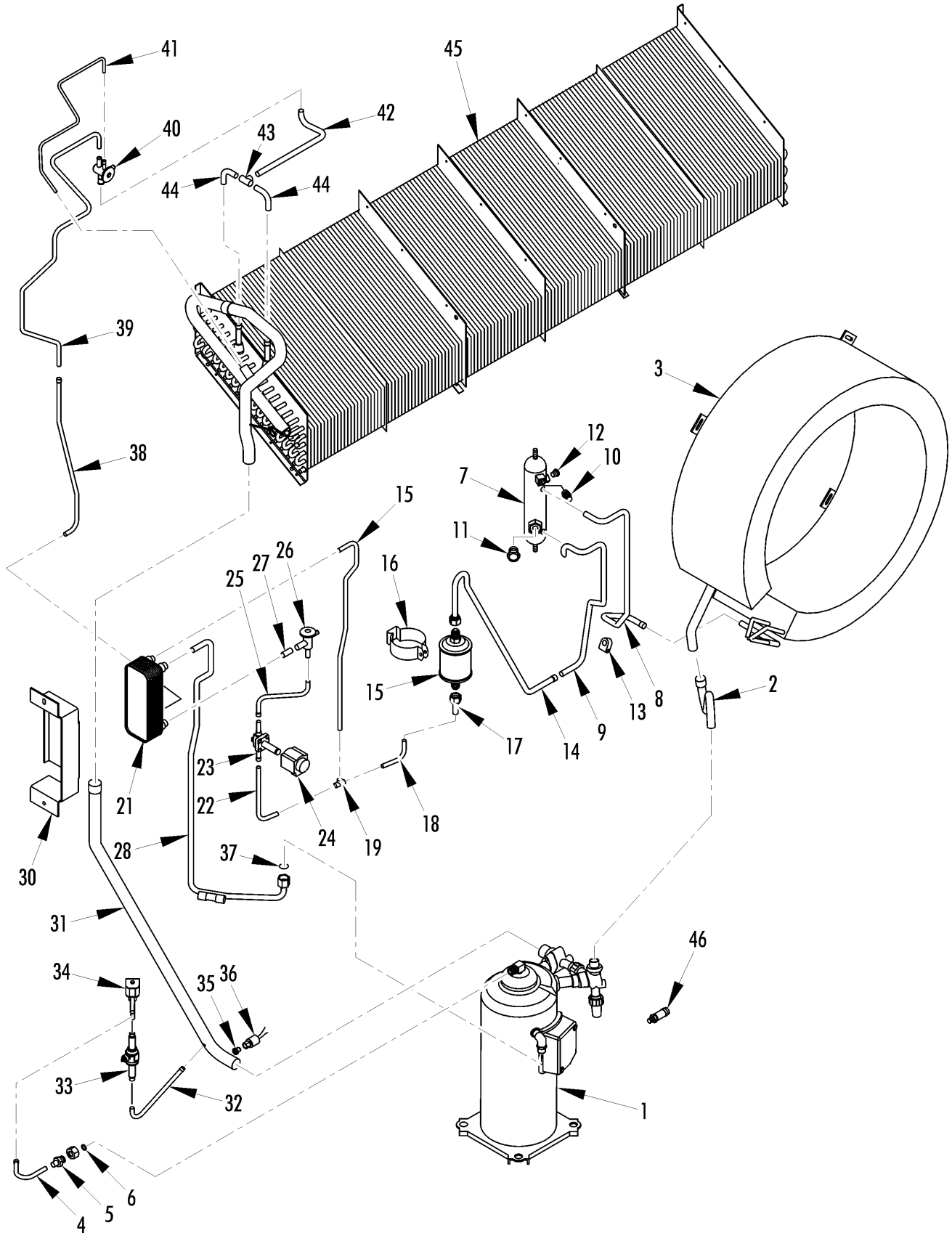
235E9

REF	PART#	DESCRIPTION	QTY
21	40-1044	SENSOR - kit (return air)	1
22	40-1044	SENSOR - kit (defrost)	1



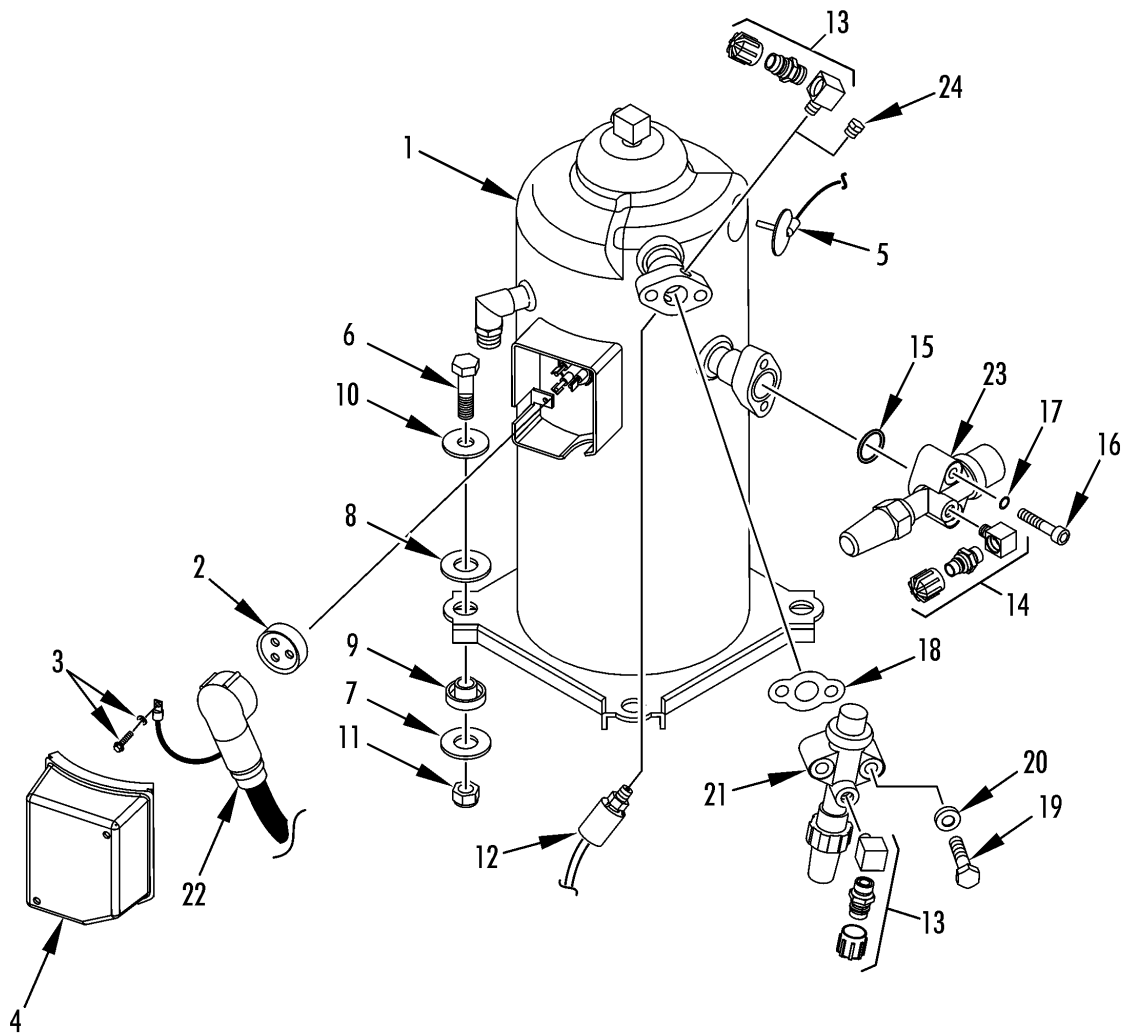


REF	PART#	DESCRIPTION	QTY
1	102-795	COMPRESSOR - scroll (see 180E1)	1
	92-2229	SPACER - compressor	1
2	61-2477	TUBE - valve to coil	1
3	60-285	COIL - condenser	1
4	61-2467	TUBE - valve to coil	1
5	61-2162	ADAPTER - compressor	1
6	33-3912	SEAL - teflon fiber	1
7	67-1991	TANK - receiver	1
8	61-2238	• TUBE - receiver to dehydrator	1
9	61-2569	• TUBE - receiver to condenser	1
10	66-7812	CAP - fitting	1
11	66-8811	INDICATOR - liquid	1
	33-3007	O-RING	1
12	506-364	PLUG - fusible	1
	51-273	NUT - receiver tank	2
	55-9027	WASHER - insulating	4
13	55-6730	CLAMP - tube	2
	51-1421	SCREW - clamp	1
	51-1425	NUT	1
	61-3508	TUBE - receiver to dehydrator	1
14	55-302	NUT - adapter	1
	61-786	DEHYDRATOR	1
16	51-1871	CLAMP - dehydrator	1
	51-1442	SCREW - clamp	1
	51-1441	FLATWASHER - clamp	1
	51-1425	NUT - clamp	1
	55-9054	WASHER - insulating	1
	51-1442	SCREW - dehydrator	1
	51-1464	FLATWASHER - dehydrator	2
17	61-3506	TUBE - filter	1
	55-302	NUT - adapter	1
18	61-3503	TUBE - filter to tee	1
19	55-3251	TEE	1
20	61-2471	TUBE - tee to exchanger	1
21	67-1889	HEAT EXCHANGER - economizer	1
	92-3547	INSULATION - heat exchanger	1
22	61-2472	TUBE - tee to valve	1
	91-758	CLAMP - tube	1
	51-1442	SCREW - clamp	1
	51-1441	FLATWASHER	2
	55-8915	SPACER	1
23	61-2470	VALVE - solenoid (vapor injection)	1



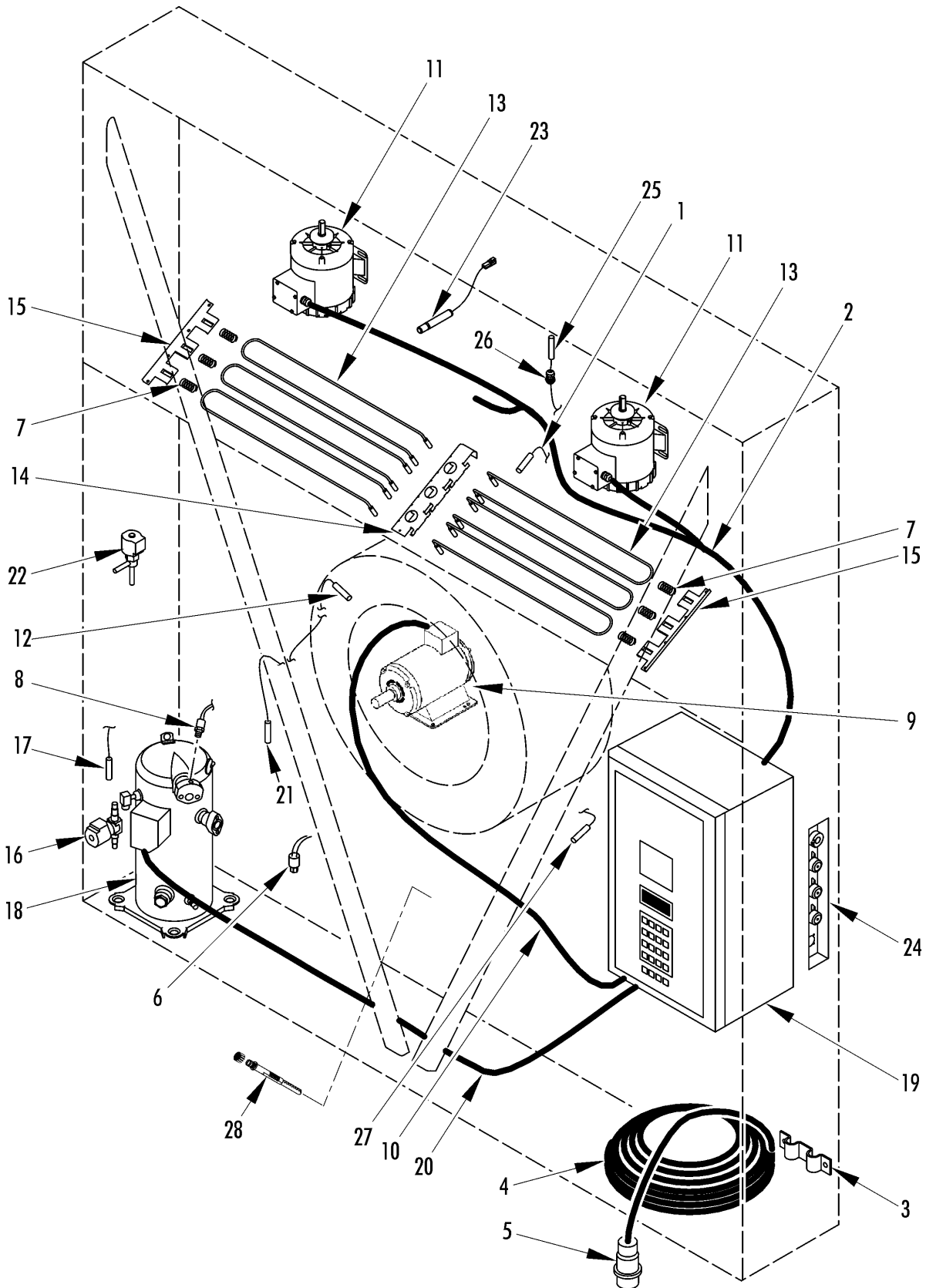


REF	PART#	DESCRIPTION	QTY
24	41-5460	COIL - valve	1
	504-919	• COIL	1
25	61-2469	TUBE - valve to expansion	1
26	66-9906	VALVE - expansion (economizer)	1
27	61-1847	TUBE - expansion valve to exchanger	1
28	61-2474	TUBE - liquid injection	1
	55-8951	SHOULDER	1
	55-8950	NUT - o-ring seal	1
	33-4499	INSULATION - tube (cut to 24.5 in lg)	A/R
	33-4499	INSULATION - tube (cut to 19.0 in lg)	A/R
	91-1800	CLAMP - tube	2
	51-1442	SCREW - clamp	1
	51-1425	NUT	1
29	61-2476	TUBE - tx bulb	1
30	92-3391	BRACKET - heat exchanger	1
	92-3550	INSULATION - mylar	1
31	61-3502	TUBE - suction	1
	33-4500	INSULATION - tube (42.1 in lg)	A/R
32	61-2466	TUBE - suction to ball valve	1
33	61-2465	VALVE - ball	1
34	61-2057	VALVE (PWM)	1
	41-7937	• COIL (only)	1
35	66-6607	FITTING - low side	1
	66-7183	• CAP - charge port (blue)	1
	66-8054	ADAPTER	1
36	41-4473	SWITCH - lpco	1
37	33-566	O-RING	1
38	61-2468	TUBE - heat exchanger to evaporator	1
	33 4501	INSULATION - tube (14.1 in lg)	A/R
39	61-2050	TUBE - exchanger to coil (#2)	1
40	61-443	VALVE - expansion	1
41	61-2048	TUBE - equalizer	1
42	61-2049	TUBE - expansion valve to tee	1
43	55-2296	TEE	1
44	61-2051	TUBE - tee to distributor	1
45	67-1923	COIL - evaporator (14.7/374 wide, see 235E9)	1
46	41-4004	SWITCH - hpco	1



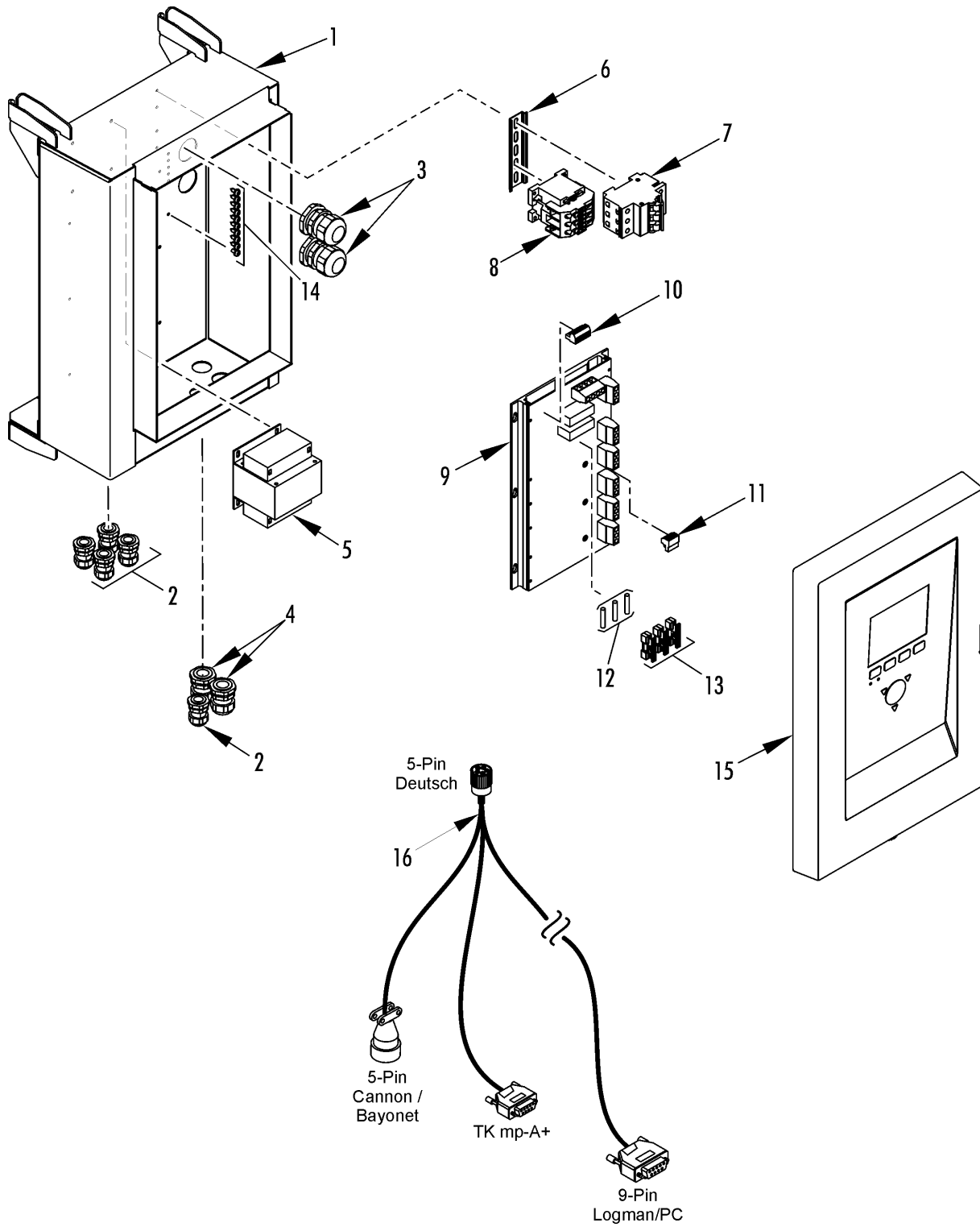


REF	PART#	DESCRIPTION	QTY
1	102-795	COMPRESSOR - scroll	1
	203-516	OIL - compressor	A/R
	40-779	KIT - gasket & grease	1
2	33-2951	• GASKET - power connector	1
	33-2979	• SEALER - silicone grease pack	1
3	55-8994	• SCREW - ground	1
	55-8995	• WASHER - ground	1
4	91-9021	• COVER - terminal box	1
5	40-776	• KIT - thermistor	1
6	51-1433	SCREW - compressor	4
7	51-1435	FLATWASHER (12 mm)	4
8	55-9012	WASHER - vibration damper	4
9	55-9013	SPACER (before 1/03)	4
	51-1432	SPACER (1/03 & after)	4
10	51-1436	FLATWASHER (13 mm)	4
11	51-1434	NUT	4
12	41-4004	SWITCH - hpco	1
	203-393	SEALER - thread (red)	A/R
13	66-7812	ADAPTER - high side	1
	66-6610	FITTING - highside	1
	66-7182	• CAP - fitting	1
	203-393	SEALER - thread (red)	A/R
14	66-8054	ELBOW - low side	1
	66-6607	FITTING - low side	1
	66-7183	• CAP - fitting	1
15	33-727	O-RING - suction	1
16	51-1438	SCREW - flange	2
17	51-1429	LOCKWASHER	2
18	33-2805	GASKET - flange	1
19	51-1437	SCREW - discharge valve	2
20	51-358	WASHER - sealing	2
21	61-2119	VALVE - discharge	1
22	40-782	KIT - power cord	1
23	61-2118	VALVE - suction	1
	66-9842	VALVE	1
24	55-3364	PLUG	1



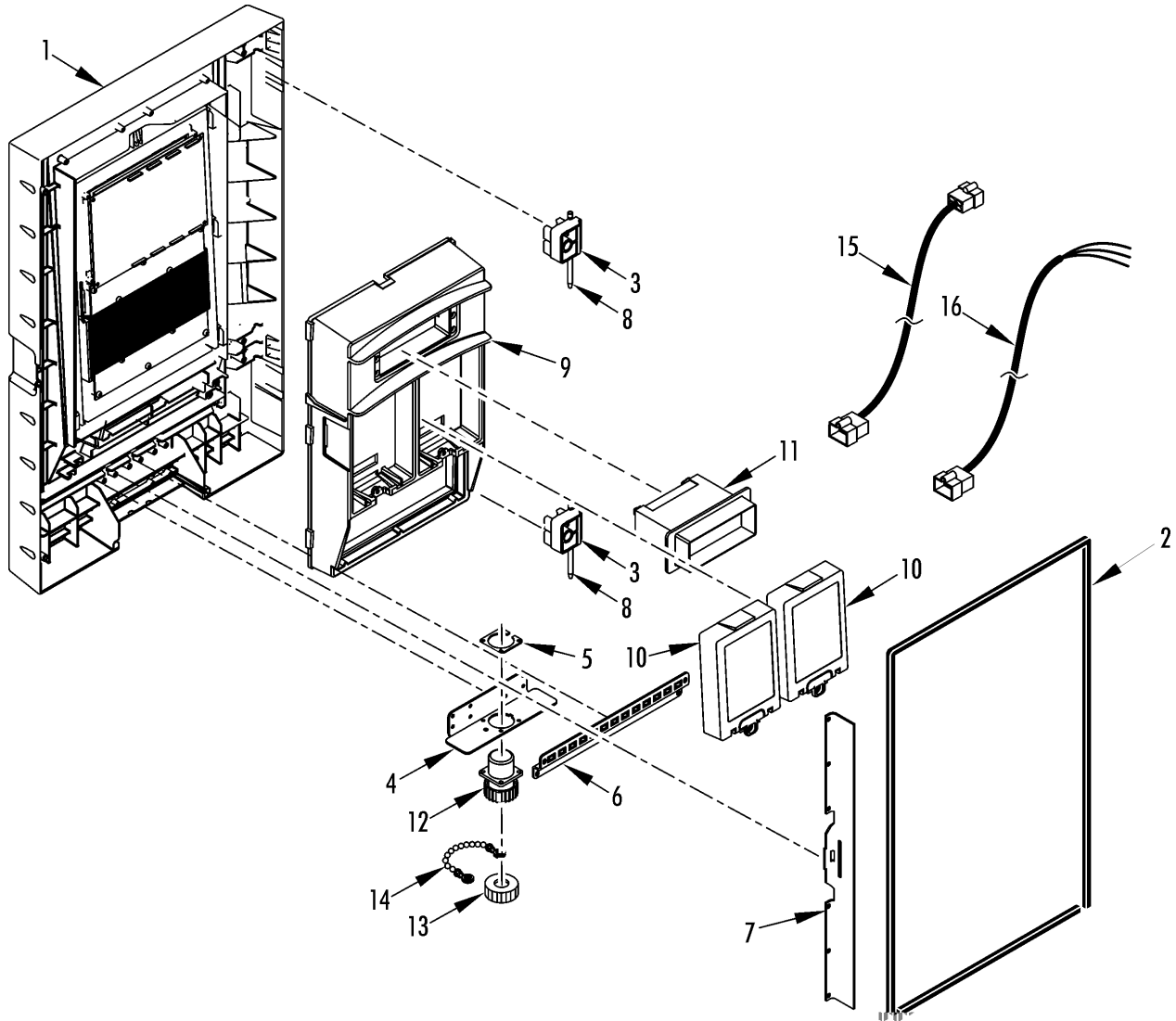


REF	PART#	DESCRIPTION	QTY
1	40-1044	SENSOR - kit (defrost)	A/R
2	41-3685	HARNESS - evaporator (see 235E9)	1
3	92-5546	BRACKET - cable restraint	1
	51-1445	SCREW - bracket	2
	51-1446	LOCKWASHER	2
	51-1441	FLATWASHER	2
	55-9054	WASHER - insulator	2
4	45-1992	CABLE - power (19.2 meters, 63 ft, 11/4 ga)	1
5	41-1976	• PLUG - power (Minnekes)	1
	44-9891	• TERMINAL - pin	7
	40-692	KIT - Cable Splice	1
	45-1908	CABLE (11/4, 250 ft roll)	A/R
	45-2272	CABLE (11/4, 1000 ft roll)	A/R
6	41-4473	SWITCH - lpco	1
7	91-8140	SPRING - heater	6
8	41-4004	SWITCH - hpco	1
9	104-759	MOTOR - condenser fan (see 235E8)	1
10	41-2953	HARNESS - condenser fan (see 235E8)	1
11	104-691	MOTOR - evaporator fan (see 235E9)	2
12	40-1044	SENSOR - kit (condenser coil)	1
13	45-1927	HEATER (680W, 2 meter leads)	6
14	91-8142	BRACKET - heater (15.4/404 long, MAGNUM)	1
15	91-8467	BRACKET - heater (13.8/350 long, MAGNUM)	2
	51-1447	SCREW - bracket	11
16	61-2470	VALVE - solenoid	1
	41-5460	COIL - valve	1
17	41-4300	SENSOR - compressor	1
18	102-795	COMPRESSOR - scroll (see 180E1)	1
19	NSS	BOX - control (see 158A3)	1
20	40-782	CABLE - compressor	1
21	40-1044	SENSOR - kit (ambient)	1
22	61-2057	VALVE - digital	1
23	41-5635	SENSOR - humidity	1
24	NSS	PANEL - USDA receptacle (see 235G4)	1
25	40-1044	SENSOR - kit (return air)	1
26	51-270	CONNECTOR - liquid tite	1
27	41-8722	SENSOR - air supply	1
28	91-9754	SENSOR - pocket	2



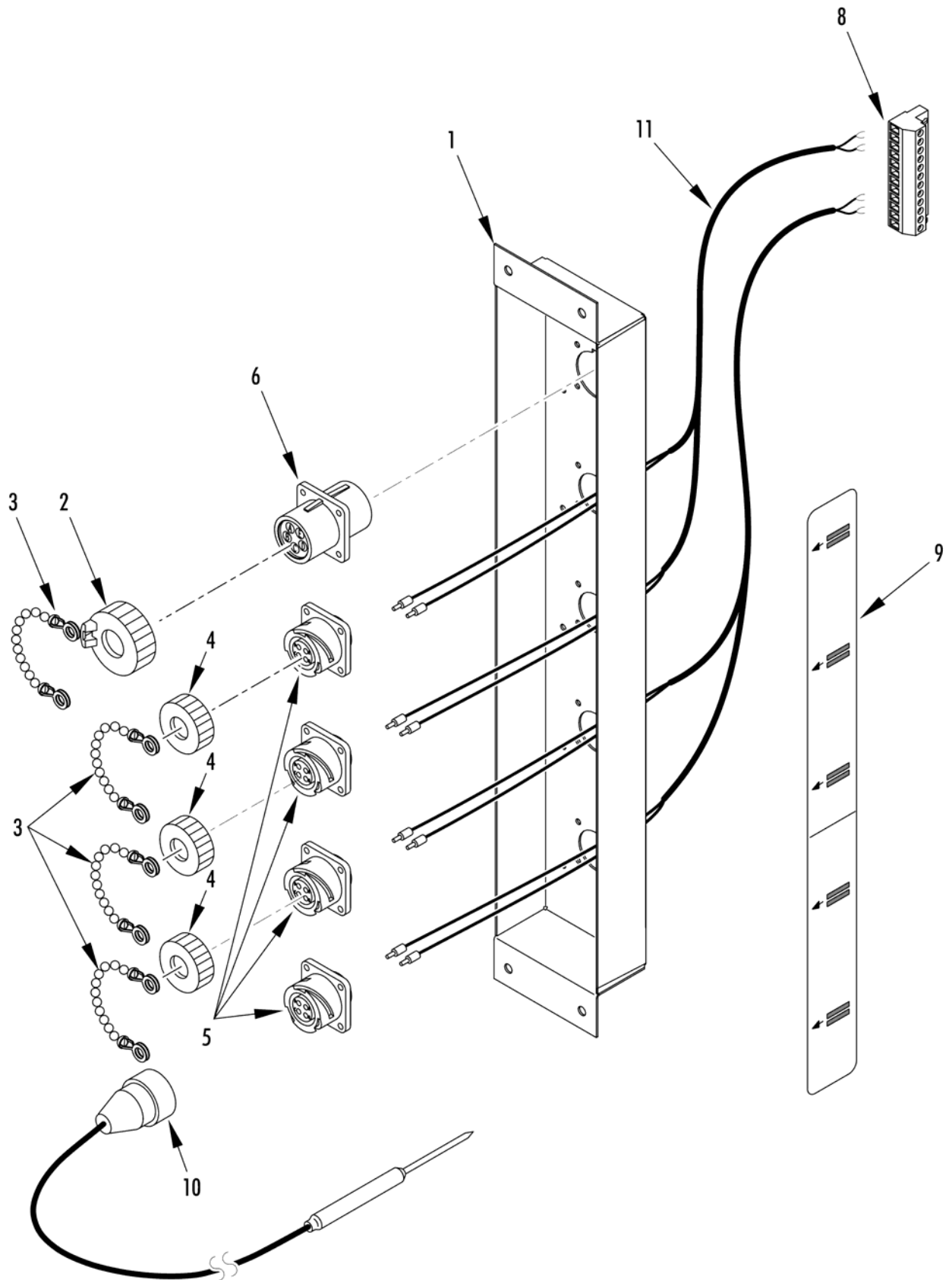


REF	PART#	DESCRIPTION	QTY
1	NSS	BASE - control box (MP-4000)	1
2	55-5900	• CONNECTOR - liquid tite	5
3	55-5112	• CONNECTOR - liquid tite	2
4	55-5257	• CONNECTOR - liquid tite	2
5	41-8763	• TRANSFORMER	1
	51-1419	• NUT	4
	51-1872	• FLATWASHER	4
6	92-7635	• RAIL - din	1
	51-1445	• SCREW	4
	55-9485	• FLATWASHER	4
7	41-5104	• BREAKER - circuit (25 amp)	1
8	41-3605	• CONTACTOR (CI 25)	1
9	41-8719	• MODULE - power (MP-4000)	1
10	504-843	• BLOCK - terminal (6 pole)	1
11	41-3596	• BLOCK - terminal (4 pole)	1
12	41-8721	• FUSE (20 amp)	3
13	41-8720	• COVER - fuse	3
14	51-336	• SCREW	10
	51-1873	• LOCKWASHER	10
15	NSS	• DOOR - controller (see 235G3)	1
16	41-8065	CABLE - data download	1



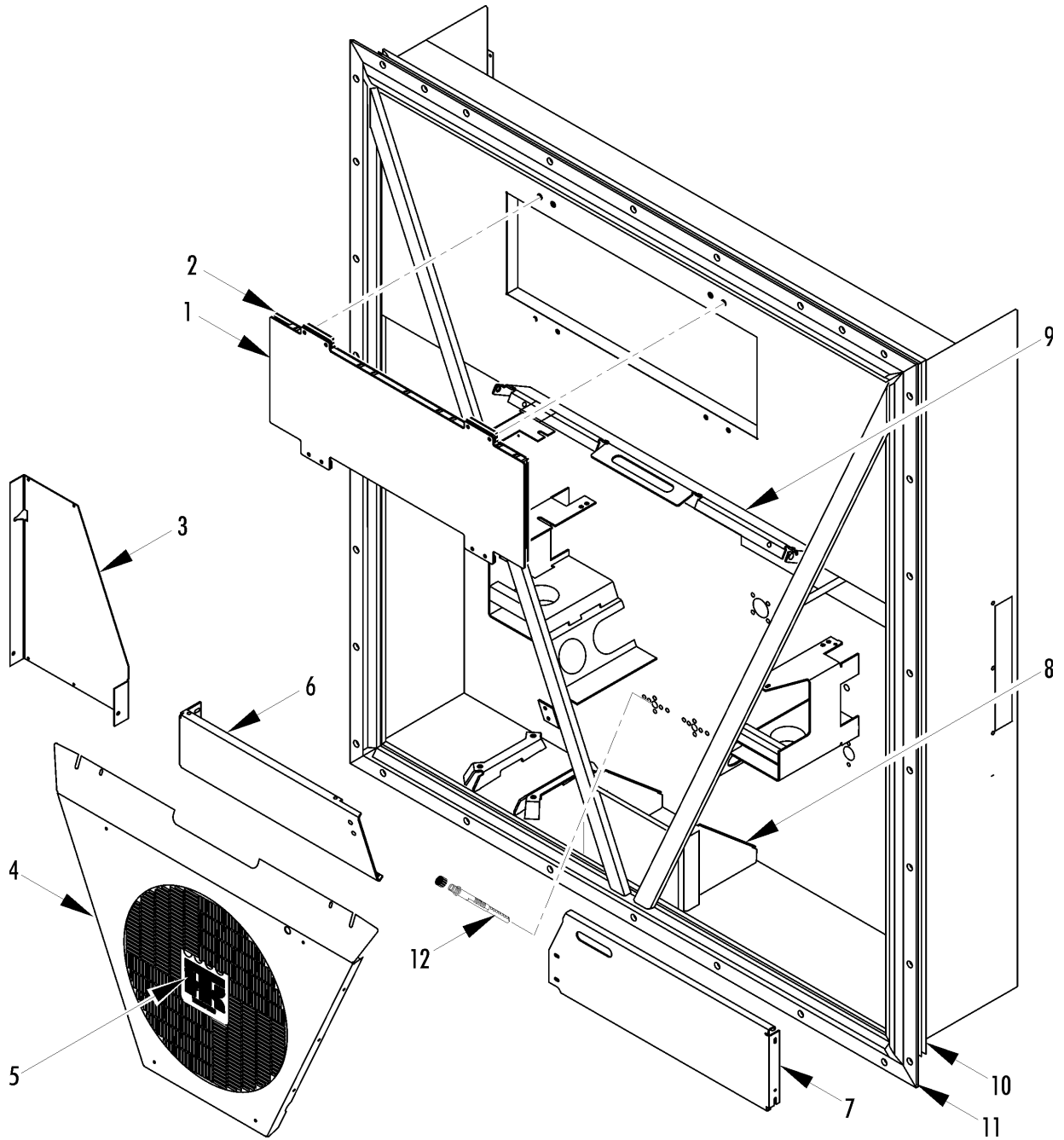


REF	PART#	DESCRIPTION	QTY
1	41-8723	DOOR - front (MP-4000, includes keypad and VGA display)	1
2	33-4502	GASKET - door	1
3	51-1844	HINGE - top	2
	51-1874	SCREW	6
4	92-7636	BRACKET - connector	1
5	92-7637	BRACKET - washer deutsch plug	1
	51-1875	RIVET (3 X 10 mm)	4
	51-1876	RIVET (3 X 8 mm)	1
6	92-7638	BRACKET - cable	1
7	92-7559	BRACKET - lock reinforcement	1
8	51-1843	PIN - hinge	2
9	45-2295	CONTROLLER (MP-4000)	1
10	41-8718	MODULE - blank	2
11	41-8717	MODULE - battery	1
12	41-8724	CABLE - retriever	1
13	41-2406	CAP - dust	1
14	99-3685	CHAIN - cap	1
15	41-8716	CABLE - serial (CM-4000 to PM-4000)	1
16	41-8715	CABLE - serial (cargo)	1



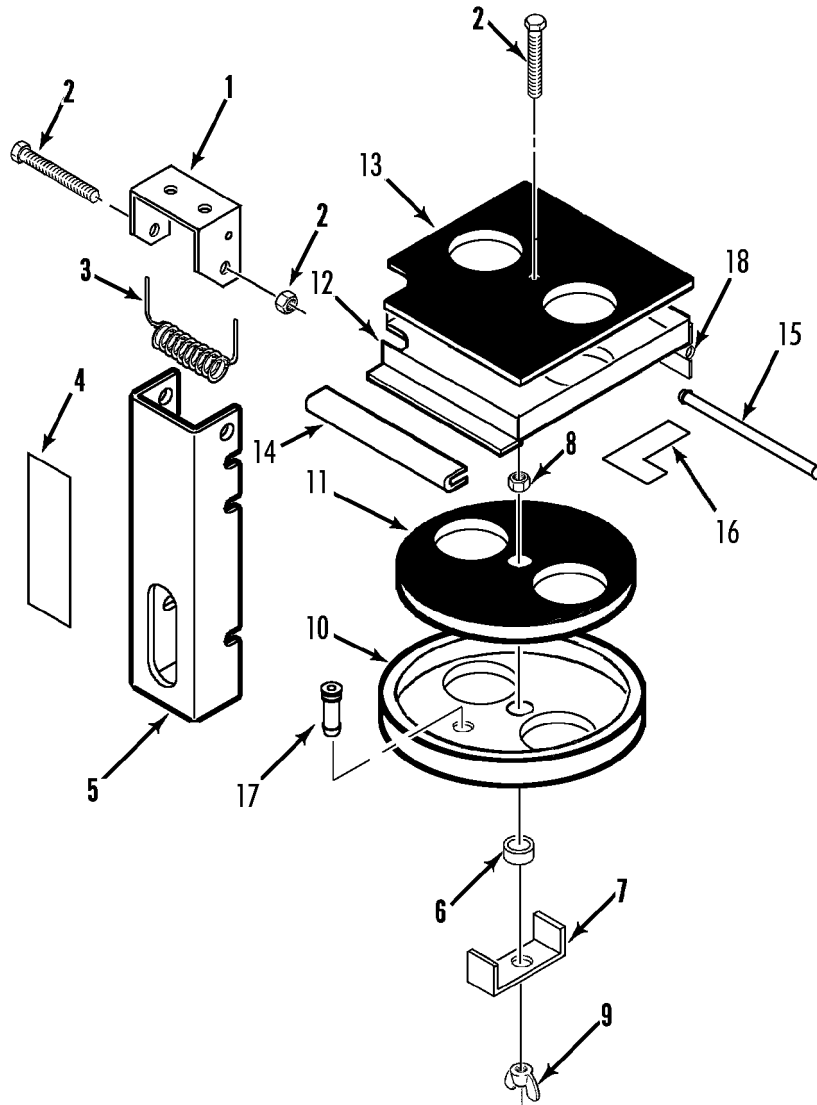


REF	PART#	DESCRIPTION	QTY
1	91-8645	PANEL - USDA receptacle	1
2	41-2406	CAP - dust	1
	92-206	CAP - dust (rubber)	1
3	99-3685	CHAIN - cap	5
4	41-890	CAP - dust	4
	55-9323	RIVET - cap	4
5	304-2772	RECEPTACLE (3 pin)	4
	55-2270	RIVET - receptacle	16
	55-7830	FLATWASHER	16
6	41-2405	CONNECTOR - receptacle (5 pin)	1
	55-2270	RIVET - receptacle	4
	55-7697	FLATWASHER	4
8	41-3585	CONNECTOR - plug (12 pin)	1
9	92-5392	NAMEPLATE - data download USDA	1
10	41-3107	SENSOR - thermistor (3 pin Deutsch, 14 m NTC, USDA)	4
	41-8188	SENSOR - thermistor (2.5 dia probe, 3 pin Deutsch, 14 m NTC, USDA)	1
11	41-7183	CABLE -NTC	2



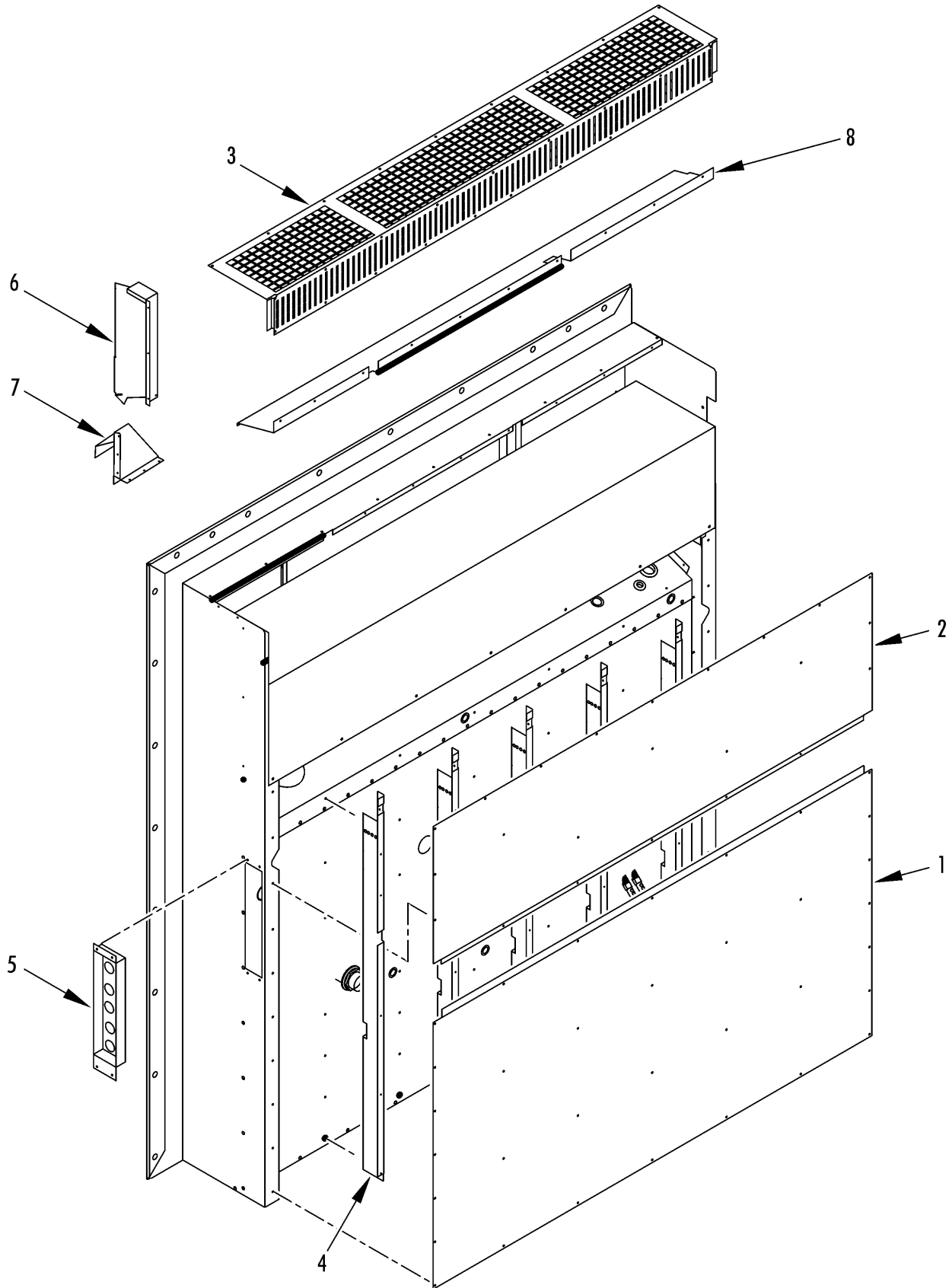


REF	PART#	DESCRIPTION	QTY
1	98-7691	DOOR - evaporator (bolt-on door)	1
	51-1460	SCREW - door (M8, TIR seal)	4
	51-1430	FLATWASHER (M8)	4
	55-9541	WASHER (M8, nylon)	4
	51-1459	SCREW - door (M6, TIR seal)	4
	51-1464	FLATWASHER (M6)	4
	55-9054	WASHER (M6, nylon)	4
2	33-3969	GASKET - evaporator door	1
3	91-8728	COVER (instead of thermometer)	1
	51-1467	SCREW - cover	3
	51-1444	FLATWASHER	3
4	98-5925	GRILLE - condenser (see 189C4)	1
	33-3043	GASKET - rubber extrusion	1
	51-1445	SCREW - grille	4
	51-1464	FLATWASHER	4
	55-9054	WASHER (nylon)	4
5	91-8475	NAMEPLATE - TK	1
6	91-8474	PLATE - guard	1
	55-7341	SCREW - plate	3
	51-1464	FLATWASHER	6
	55-9054	WASHER - insulation	6
7	98-6560	PLATE - cable storage (units w/o water cooled cond)	1
	51-1425	NUT	2
	55-9054	WASHER (nylon)	4
	51-1464	FLATWASHER	4
8	91-8108	BRACKET - frame	1
	51-1442	SCREW - bracket	5
	51-1425	NUT	3
	55-9054	WASHER (nylon)	5
	51-1464	FLATWASHER	5
9	92-891	BRACKET - safety hook	1
	51-1443	SCREW - bracket	4
	51-1430	FLATWASHER	4
	55-9541	WASHER (nylon)	4
10	33-2983	GASKET - unit	1
11	98-8243	FRAME - condenser	1
12	91-9754	POCKET - sensor	2



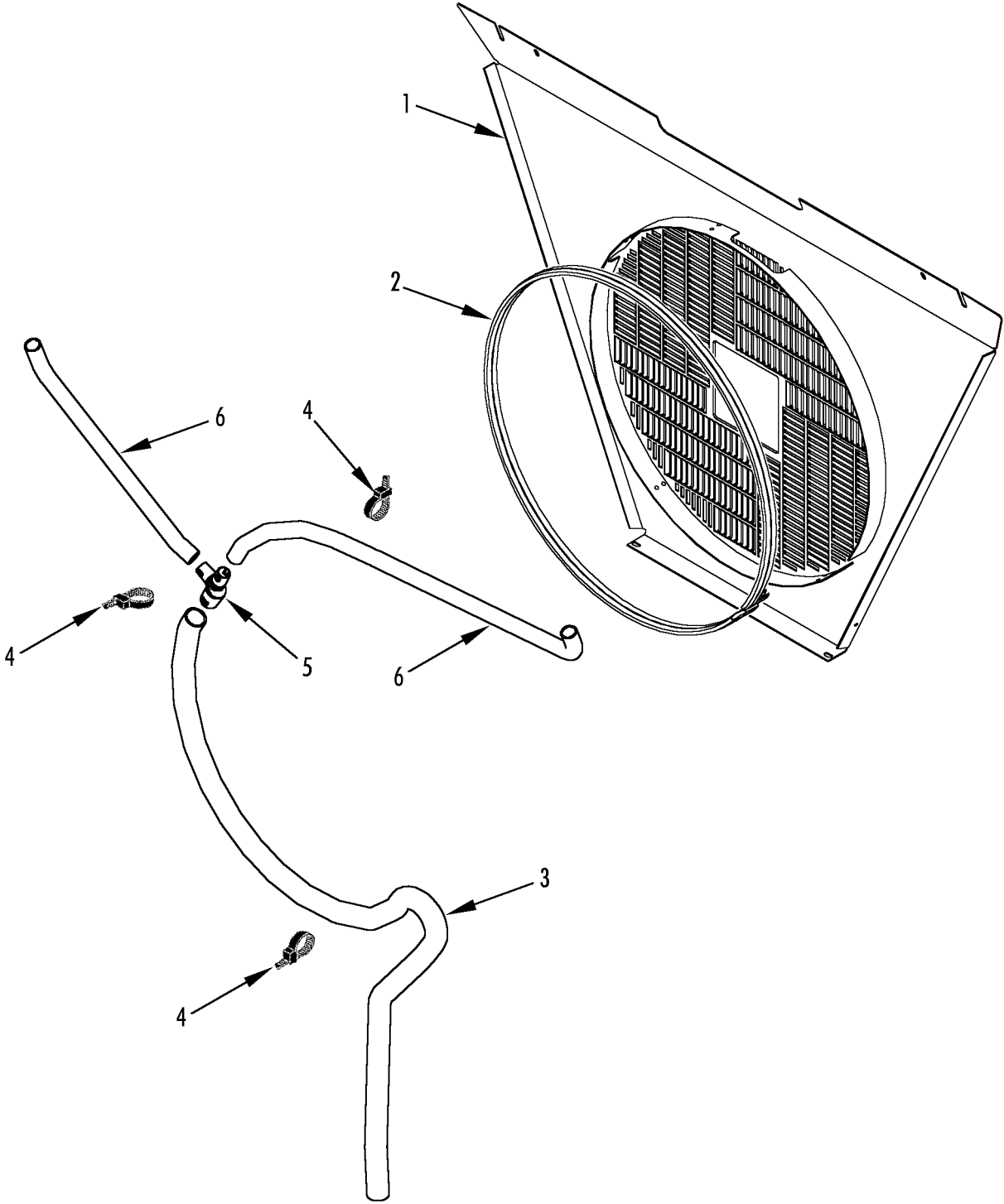


REF	PART#	DESCRIPTION	QTY
	91-8252	VENT - air (complete)	1
1	91-9048	• BRACKET - air vent handle	1
2	51-1426	• SCREW - handle	1
	51-1474	• SCREW (M8 x 1.25 x 65, ss)	1
	55-9541	• WASHER (nylon)	4
	51-1427	• NUT	1
3	91-8100	• SPRING	1
4	92-440	• NAMEPLATE - Do Not Open Below 0 C	1
5	91-8102	• HANDLE - air vent	1
6	77-2467	• BEARING - slide	1
7	91-8104	• BRACKET - handle	1
8	51-1428	• NUT	2
	51-1429	• LOCKWASHER	1
	51-1430	• FLATWASHER	1
9	51-1431	• NUT - wing	1
10	91-8103	DISK - air vent	1
11	33-4255	• GASKET - air vent	1
12	91-8105	• PLATE - air vent	1
	55-7172	• SCREW - plate	4
	55-7075	• FLATWASHER	4
	55-9541	• WASHER (nylon)	4
13	33-2944	• GASKET - air vent	1
14	91-8663	• PROTECTOR - edge	1
15	91-8106	• PIN - hinge	1
16	91-8107	• NAMEPLATE - Do Not Open Below 0 C	1
17	55-9168	• ADAPTER - hose	1
18	92-411	• HINGE - air vent	1
	51-619	SCREW - vent	8
	55-8933	WASHER - insulator (6.4 id)	4
	55-7075	FLATWASHER	4
	55-9054	WASHER - insulator (8.4 id)	6
	55-8893	FLATWASHER	6
	55-7339	NUT	6



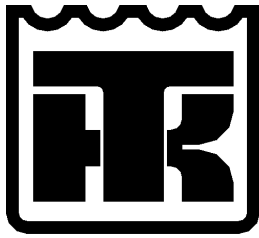


REF	PART#	DESCRIPTION	QTY
1	98-5773	PLATE - rear (bottom)	1
2	98-5772	PLATE - rear (top)	1
	51-336	SCREW - plate	23
	55-9444	WASHER - insulating	23
	55-3136	RIVET - plate	29
3	98-8244	GRILLE - evaporator	1
	55-3136	RIVET - grille	17
4	92-427	CHANNEL - Z (100 mm deep)	5
	51-621	RIVET - channel	39
5	NSS	PANEL - USDA receptacle (see 235G4)	1
6	92-7639	CHANNEL - air	1
	55-9323	RIVOT	8
7	91-9330	INLET - fresh air	1
	55-9323	RIVET - inlet	10
8	92-7640	CHANNEL - fresh air	1
	55-9323	RIVET - channel	8





REF	PART#	DESCRIPTION	QTY
1	98-5925	GRILLE - condenser (see 189C2)	1
2	33-3043	GASKET - grille (extrusion)	1
3	11-9734	HOSE - drain (29 mm id, cut as required)	A/R
4	55-2330	BANDWRAP	A/R
5	11-9735	TEE - drain hose	1
6	11-9576	HOSE - drain (21 mm id, cut as required)	A/R



1



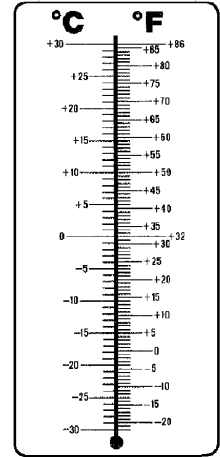
Ingersoll-Rand

2

THERMO KING

3

WARNING
Hot Components
Compressor discharge
may be hot!



7

R-404A
COMPRESSOR FILLED WITH ESTER OIL
PART No.: 203-433

4

WARNING
FANS START
AUTOMATICALLY

5

WARNING !
TURN POWER OFF
BEFORE DISCONNECTING
DATALOGGER OR
CONTROLLER.

6

8

DATA DOWNLOAD PORT

USDA #1/
SPARE 1

USDA #2/
SPARE 2

USDA #3/
SPARE 3

PULP/
SPARE 5

WARNING
CONSULT MAINTENANCE MANUAL FOR
PRECAUTIONS BEFORE WELDING
ON CONTAINER OR REFRIGERATION UNIT.

1. Disconnect all power to the refrigeration unit.
2. Disconnect all quick-disconnect wire harnesses.
3. Switch all of the electrical circuit breakers in the control box to the OFF position.
4. Weld unit and/or container per normal welding procedures. Keep ground return electrode as close to the area to be welded as practical. This will reduce the likelihood of stray welding currents passing through any electrical or electronic circuits.
5. When the welding operation is completed, the unit power cables, wiring and circuit breakers must be restored to their normal condition.

10

**TRANSFRESH
DATA
CONNECTOR
A 3**

11

**TRANSFRESH
SCRUBBER
CONNECTOR
A 5**

12

WARNING Make sure container is vented before entering, may contain low oxygen condition.

WARNING Vergewissern Sie sich, dass der Container vor dem Eintreten belüftet ist, um Sauerstoffmangel auszuschließen!

ADVERTENCIA Cerciórese de que el contenedor sea ventilado antes de entrar. Puede encontrarse en condiciones de poco oxígeno.

주의 들어가기 전에 콘테이너에 통풍이 되어있는지 확인하십시오. 저산소 상태가 발생할 수 있습니다.

警告 入る前にコンテナに通風しなかつたかどが確認して下さい。低酸素状態になるおそれません。

14

WARNING

Do Not Operate Scroll Compressor with Service or Receiver Tank Valves Closed. Compressor Damage Will Occur.

13

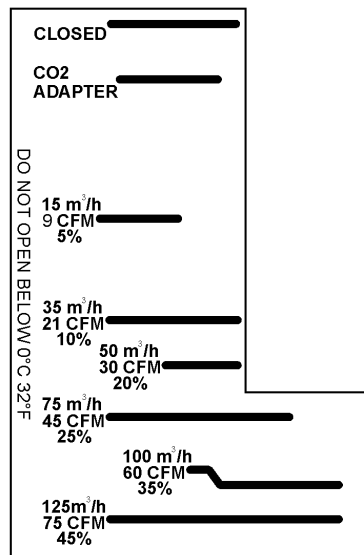
DO NOT OPEN BELOW 0°C 32°F

150 m³/h
90 CFM
55%

225 m³/h
135 CFM
80%

280 m³/h
165 CFM
100%

15



16

DOOR POSITION

CLOSED

1

2

3

4

5

6

#	CMH	CFM
1	35	21
2	75	45
3	125	75
4	150	90
5	225	135
6	280	165

17

WARNING

HOT COMPONENTS
Compressor Discharge may be hot.

Do not operate compressor with service valves closed. Compressor damage will occur.

18



REF	PART#	DESCRIPTION	QTY
1	91-8475	NAMEPLATE - TK (crest)	1
2	92-4305	NAMEPLATE - IR logo (red/black)	1
3	91-9778	NAMEPLATE - Thermo King	1
4	91-8154	NAMEPLATE - R404A	1
5	91-8694	NAMEPLATE - Warning, Fan Start	1
6	91-8695	NAMEPLATE - Warning, Hot Components	1
7	91-5635	NAMEPLATE - Temperature Conversion	1
8	91-9382	NAMEPLATE - Warning	1
9	92-243	NAMEPLATE - USDA Connections	1
	92-5392	NAMEPLATE - USDA Connections	1
10	92-1218	NAMEPLATE - Weld	1
11	91-8697	NAMEPLATE - Data A3	1
12	91-8696	NAMEPLATE - Scrubber A5	1
13	91-9596	NAMEPLATE - Warning, Scroll Compressor	1
14	92-2585	NAMEPLATE - Warning, Low Oxygen	1
15	92-440	NAMEPLATE - Air Vent Handle	1
16	91-9831	NAMEPLATE - Air Vent Door	1
17	92-2586	NAMEPLATE - AFAM Door Position	1
18	92-4724	NAMEPLATE - Warning English	1

INDEX NUMERICAL BY PART NUMBER

102-795	12, 16, 18	41-8716	22	51-1876	22
104-691	8, 18	41-8717	22	51-270	8, 18
104-759	6, 18	41-8718	22	51-273	12
11-4367	8	41-8719	20	51-336	20, 30
11-9576	32	41-8720	20	51-358	16
11-9734	32	41-8721	20	51-619	8, 28
11-9735	32	41-8722	18	51-621	30
203-393	16	41-8723	22	55-2270	24
203-516	16	41-8724	22	55-2296	14
304-2772	24	41-8763	20	55-2330	32
33 4501	14	41-890	24	55-302	12
33-2805	16	44-9891	18	55-3136	30
33-2944	28	45-1908	18	55-3251	12
33-2946	8	45-1927	18	55-3364	16
33-2950	6	45-1992	18	55-5112	20
33-2951	16	45-2272	18	55-5257	20
33-2979	16	45-2295	22	55-5900	6, 8, 20
33-2983	26	504-843	20	55-6730	12
33-3007	12	504-919	14	55-7075	28
33-3043	26, 32	506-364	12	55-7172	28
33-367	6, 8	51-1419	20	55-7339	28
33-3912	12	51-1421	12	55-7341	26
33-3917	8	51-1422	8	55-7697	24
33-3929	8	51-1425	12, 14, 26	55-7830	24
33-3969	26	51-1426	28	55-8893	28
33-4255	28	51-1427	6, 8, 28	55-8915	12
33-4499	14	51-1428	28	55-8933	28
33-4500	14	51-1429	6, 8, 16, 28	55-8950	14
33-4502	22	51-1430	26, 28	55-8951	14
33-566	14	51-1431	28	55-8994	16
33-727	16	51-1432	16	55-8995	16
40-1044	10, 18	51-1433	16	55-9012	16
40-692	18	51-1434	16	55-9013	16
40-776	16	51-1435	16	55-9027	12
40-779	16	51-1436	16	55-9054	6, 12, 18, 26, 28
40-782	16, 18	51-1437	16	55-9162	8
41-1976	18	51-1438	16	55-9168	28
41-2405	24	51-1441	8, 12, 18	55-9217	8
41-2406	22, 24	51-1442	6, 8, 12, 14, 26	55-9323	24, 30
41-2953	6, 18	51-1443	6, 26	55-9444	30
41-3107	24	51-1444	6, 8, 26	55-9485	20
41-3409	8	51-1445	18, 20, 26	55-9541	26, 28
41-3585	24	51-1446	18	55-9698	8
41-3596	20	51-1447	8, 18	60-285	6, 12
41-3605	20	51-1459	26	61-1847	14
41-3685	8, 18	51-1460	26	61-2048	14
41-4004	14, 16, 18	51-1461	8	61-2049	14
41-4300	18	51-1464	12, 26	61-2050	14
41-4473	14, 18	51-1467	26	61-2051	14
41-5104	20	51-1474	28	61-2057	14, 18
41-5460	14, 18	51-1843	22	61-2118	16
41-5635	8, 18	51-1844	22	61-2119	16
41-5814	8	51-1869	8	61-2162	12
41-7143	8	51-1870	8	61-2238	12
41-7183	24	51-1871	12	61-2465	14
41-7937	14	51-1872	20	61-2466	14
41-8065	20	51-1873	20	61-2467	12
41-8188	24	51-1874	22	61-2468	14
41-8715	22	51-1875	22	61-2469	14

INDEX NUMERICAL BY PART NUMBER

61-2470	12, 18	91-9596	34
61-2471	12	91-9754	18, 26
61-2472	12	91-9778	34
61-2474	14	91-9831	34
61-2476	14	92-1218	34
61-2477	12	92-206	24
61-2569	12	92-2229	12
61-3502	14	92-2332	8
61-3503	12	92-243	34
61-3506	12	92-2585	34
61-3508	12	92-2586	34
61-443	14	92-2775	8
61-786	12	92-2779	8
66-6607	14, 16	92-3391	14
66-6610	16	92-3547	12
66-7182	16	92-3550	14
66-7183	14, 16	92-411	28
66-7812	12, 16	92-427	30
66-8054	14, 16	92-4305	34
66-8811	12	92-440	28, 34
66-9842	16	92-458	8
66-9906	14	92-4724	34
67-1889	12	92-5392	24, 34
67-1923	14	92-5546	18
67-1991	12	92-7559	22
77-2467	28	92-7635	20
78-1683	8	92-7636	22
78-1684	6	92-7637	22
91-1800	14	92-7638	22
91-5635	34	92-7639	30
91-758	12	92-7640	30
91-8100	28	92-891	26
91-8102	28	98-5772	30
91-8103	28	98-5773	30
91-8104	28	98-5925	26, 32
91-8105	28	98-6560	26
91-8106	28	98-7691	26
91-8107	28	98-8242	8
91-8108	26	98-8243	26
91-8140	18	98-8244	30
91-8142	18	99-3685	22, 24
91-8154	34		
91-8252	28		
91-8466	8		
91-8467	18		
91-8474	26		
91-8475	26, 34		
91-8645	24		
91-8663	28		
91-8694	34		
91-8695	34		
91-8696	34		
91-8697	34		
91-8728	26		
91-9021	16		
91-9048	28		
91-9328	8		
91-9330	30		
91-9382	34		

INDEX ALPHABETICAL BY DESCRIPTION

A

ADAPTER 14
ADAPTER - compressor 12
ADAPTER - high side 16
ADAPTER - hose 28

B

BANDWRAP 32
BASE - control box 20
BEARING - slide 28
BLOCK - coil 8
BLOCK - terminal 20
BOX - control 18
BRACKET - air vent handle 28
BRACKET - cable 22
BRACKET - cable restraint 18
BRACKET - connector 22
BRACKET - frame 26
BRACKET - handle 28
BRACKET - heat exchanger 14
BRACKET - heater 18
BRACKET - lock reinforcement 22
BRACKET - motor 8
BRACKET - safety hook 26
BRACKET - washer deutsch plug 22
BREAKER - circuit 20

C

CABLE 18
CABLE - compressor 18
CABLE - data download 20
CABLE - power 18
CABLE - retriever 22
CABLE - serial 22
CABLE -NTC 24
CAP - charge port 14
CAP - dust 22, 24
CAP - fitting 12, 16
CAP - screw 8
CAP - tube 8
CHAIN - cap 22, 24
CHANNEL - air 30
CHANNEL - fresh air 30
CHANNEL - Z 30
CLAMP - dehydrator 12
CLAMP - tube 12, 14
COIL 14
COIL - condenser 6, 12
COIL - evaporator 8, 14
COIL - valve 14, 18
COMPRESSOR - scroll 12, 16, 18
CONNECTOR - harness & sensor 8
CONNECTOR - liquid tite 8, 18, 20
CONNECTOR - plug 24
CONNECTOR - receptacle 24
CONTACTOR 20
CONTROLLER 22
COVER 26
COVER - fuse 20

COVER - terminal box 16
COVER - tube 8

D

DEHYDRATOR 12
DISK - air vent 28
DOOR - controller 20
DOOR - evaporator 26
DOOR - front 22

E

ELBOW - low side 16

F

FAN - condenser 6
FAN - evaporator 8
FILTER - gas sensor 8
FITTING - highside 16
FITTING - low side 14, 16
FLATWASHER 6, 8, 12, 16, 18, 20,
24, 26, 28
FLATWASHER - clamp 12
FLATWASHER - dehydrator 12
FRAME - condenser 26
FUSE 20

G

GASKET 6
GASKET - air vent 28
GASKET - door 22
GASKET - evaporator door 26
GASKET - flange 16
GASKET - grille 32
GASKET - power connector 16
GASKET - rubber extrusion 26
GASKET - unit 26
GRILLE - condenser 26, 32
GRILLE - evaporator 30
GRIP - cable 6
GROMMET 6, 8

H

HANDLE - air vent 28
HARNESS - condenser fan 6, 18
HARNESS - evaporator 18
HARNESS - evaporator fan 8
HEAT EXCHANGER - economizer 12
HEATER 18
HINGE - air vent 28
HINGE - top 22
HOSE - drain 32
HOSE - sensor 8
HOUSING - evaporator 8

I

INDICATOR - liquid 12
INLET - fresh air 30
INSERT 8
INSULATION - heat exchanger 12

INSULATION - mylar 14
INSULATION - tube 14

K

KIT - Cable Splice 18
KIT - gasket & grease 16
KIT - power cord 16
KIT - thermistor 16

L

LOCKWASHER 6, 8, 16, 18, 20, 28

M

MODULE - battery 22
MODULE - blank 22
MODULE - power 20
MOTOR - condenser fan 6, 18
MOTOR - evaporator fan 18
MOTOR - fan 8

N

NAMEPLATE - AFAM Door Position 34
NAMEPLATE - Air Vent Door 34
NAMEPLATE - Air Vent Handle 34
NAMEPLATE - Data A3 34
NAMEPLATE - data download USDA
24
NAMEPLATE - Do Not Open Below 0 C
28
NAMEPLATE - IR logo 34
NAMEPLATE - R404A 34
NAMEPLATE - Scrubber A5 34
NAMEPLATE - Temperature
Conversion 34
NAMEPLATE - Thermo King 34
NAMEPLATE - TK 26, 34
NAMEPLATE - USDA Connections 34
NAMEPLATE - Warning 34
NAMEPLATE - Warning English 34
NAMEPLATE - Warning, Fan Start 34
NAMEPLATE - Warning, Hot
Components 34
NAMEPLATE - Warning, Low Oxygen
34
NAMEPLATE - Warning, Scroll
Compressor 34
NAMEPLATE - Weld 34
NUT 6, 8, 12, 14, 16, 20, 26, 28
NUT - adapter 12
NUT - clamp 12
NUT - o-ring seal 14
NUT - receiver tank 12
NUT - wing 28

O

OIL - compressor 16
O-RING 12, 14
O-RING - suction 16

INDEX ALPHABETICAL BY DESCRIPTION

P

PANEL - USDA receptacle **18, 24, 30**
PIN - hinge **22, 28**
PLATE - air vent **28**
PLATE - cable storage **26**
PLATE - guard **26**
PLATE - rear **30**
PLUG **16**
PLUG - fusible **12**
PLUG - power **18**
POCKET - sensor **26**
PROTECTOR - edge **28**

R

RAIL - din **20**
RECEPTACLE **24**
RIVET **22**
RIVET - cap **24**
RIVET - channel **30**
RIVET - grille **30**
RIVET - housing **8**
RIVET - inlet **30**
RIVET - plate **30**
RIVET - receptacle **24**
RIVOT **30**

S

SCREW **8, 20, 22, 28**
SCREW - bracket **8, 18, 26**
SCREW - clamp **12, 14**
SCREW - coil **6, 8**
SCREW - compressor **16**
SCREW - cover **26**
SCREW - dehydrator **12**
SCREW - discharge valve **16**
SCREW - door **26**
SCREW - flange **16**
SCREW - grille **26**
SCREW - ground **16**
SCREW - handle **28**
SCREW - motor **6, 8**
SCREW - plate **26, 28, 30**
SCREW - vent **28**
SEAL - teflon fiber **12**
SEALER - silicone grease pack **16**
SEALER - thread **16**
SENSOR - air supply **18**
SENSOR - compressor **18**
SENSOR - gas **8**
SENSOR - humidity **8, 18**
SENSOR - kit **10, 18**
SENSOR - pocket **18**
SENSOR - thermistor **24**
SHOULDER **14**
SPACER **12, 16**
SPACER - compressor **12**
SPRING **28**
SPRING - heater **18**
SWITCH - hpco **14, 16, 18**

SWITCH - lpco **14, 18**

T

TANK - receiver **12**
TEE **12, 14**
TEE - drain hose **32**
TERMINAL - pin **18**
TRANSFORMER **20**
TRIM - edge guard **8**
TUBE - equalizer **14**
TUBE - exchanger to coil **14**
TUBE - expansion valve to exchanger
14
TUBE - expansion valve to tee **14**
TUBE - filter **12**
TUBE - filter to tee **12**
TUBE - heat exchanger to evaporator
14
TUBE - liquid injection **14**
TUBE - receiver to condenser **12**
TUBE - receiver to dehydrator **12**
TUBE - suction **14**
TUBE - suction to ball valve **14**
TUBE - tee to distributor **14**
TUBE - tee to exchanger **12**
TUBE - tee to valve **12**
TUBE - tx bulb **14**
TUBE - valve to coil **12**
TUBE - valve to expansion **14**

V

VALVE **14, 16**
VALVE - ball **14**
VALVE - digital **18**
VALVE - discharge **16**
VALVE - expansion **14**
VALVE - solenoid **12, 18**
VALVE - suction **16**
VENT - air **28**

W

WASHER **6, 26, 28**
WASHER - ground **16**
WASHER - insulating **12, 30**
WASHER - insulation **26**
WASHER - insulator **8, 18, 28**
WASHER - sealing **16**
WASHER - vibration damper **16**