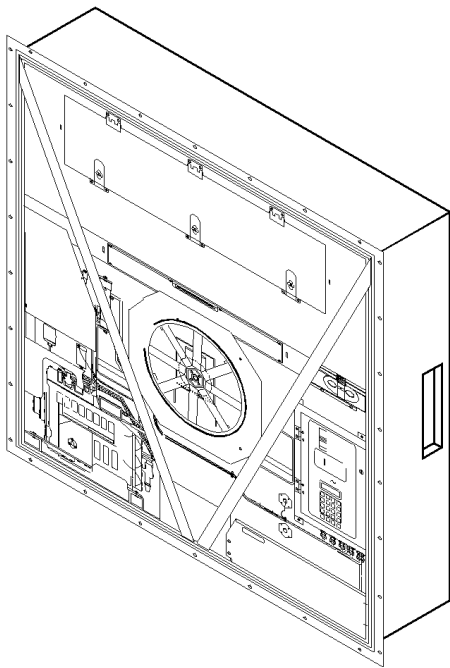


CRR 40 D

Maersk SeaLand

TK 50262-4.22



Printed (February 15, 2006)

Copyright © 1999 - Thermo King Corp. - Minneapolis, MN U.S.A.
Electronically printed in U.S.A.

General Information

Tables of Contents

This Parts Manual contains a numerical table of contents listing each assembly name, its associated Grid number and page number. The numerical table of contents is arranged numerically by Grid number. There are references in a parts list referring to other Grid numbers, the numerical table of contents is arranged to facilitate finding the referenced illustrations. At the rear of this parts manual are two indexes, a numerical and alphabetical. The indexes contain all of the part numbers and descriptions which appear in this manual.

Assemblies and Subassemblies

When parts are indented in the description list, they are preceded with a bullet (•). This indicates that the part(s) is available separately or included in an assembly.

GRID NO. 67D6 SWITCH PANEL ASSEMBLY

REF	PART#	DESCRIPTION	QTY
	45-1239	PANEL - assy, switch	1
1	99-1960	• PANEL	1
	99-6280	• • NAMEPLATE - panel	1
2	33-743	• GASKET	1

For example: the switch panel nameplate (99-6280) is available separately, available as part of the switch panel (99-1960) and with the panel assembly (45-1239).

ABBREVIATIONS

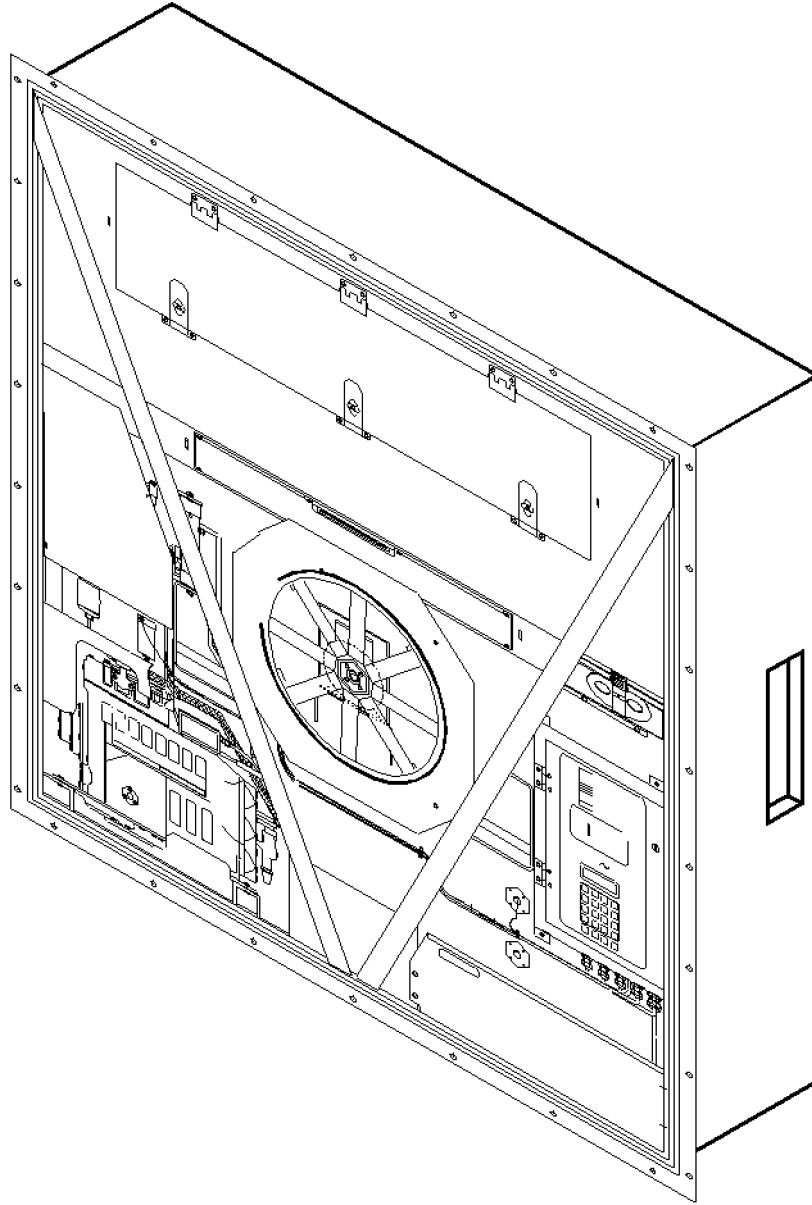
The following abbreviations appear in parts manuals

A AC alternating current	E (continued)	O os oversized
A/R as required	evap. evaporator	od outside diameter
accum accumulator	exch exchanger	P pcb printed circuit board
adj adjusting	exp expansion	pkg package
al aluminum	ext external	ph phase
alt. alternator	F F Fahrenheit	pos positive
A or amp ampere	fill fillister	psi pounds per square inch
assy assembly	fi fuel injection	
B bd board	fl flare	R rad radiator
brg bearing	fpt female pipe thread	rcvr receiver
brkr breaker	ft feet	ref reference
brkt bracket	ftg fitting	reg regulator
C C Celsius	H hex hexagon	req required
cw clockwise	hh hexagon head	rpm revolutions per minute
ccw counter-clockwise	hd head	S sec second
cam camshaft	hp horsepower	sld solder
compr compressor	hsg housing	soc hd. socket head
cond. condenser	I id inside diameter	sol solenoid
conn. connecting, connector	in inch (2.54 centimeters)	spl special
cyl cylinder	incl includes	sq square
D def defrost	inj injection	ss stainless steel
deg degree	int internal	std standard
dehyd. dehydrator	int th internal tooth	stl steel
dia diameter	L liq liquid	suct suction
DC direct current	lg long	sw switch
disch discharge	M mm millimeter	T term terminal
diff differential	mpt male pipe thread	temp temperature
E EMI Extended	mod modulating	thk thick
. Maintenance Interval	N neg negative	U us undersize
EEC European Economic Community	No. number	V vib vibrasorber
eng engine	NS not supplied	W W watt
	NSS not sold separately	w/ with
		w/o without

CRR 40 DF Maersk SeaLand

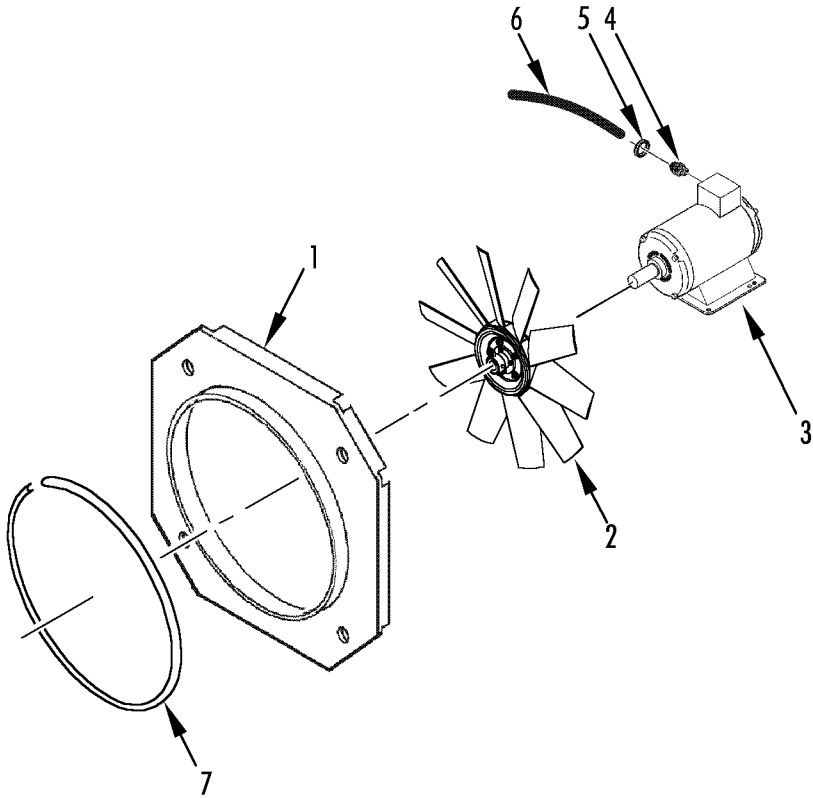
Contents

Name	Grid	Page
CRR 40 DF REFERENCE SHEET	4U713
CONTROL BOX (TNE 508-34 & DEEP FREEZE)	140D823
CONTROL BOX DOOR (mPC 2000)	140D927
CONDENSER FAN GROUP	143D35
DEFROST DRAIN	143D1045
REFRIGERATION CONDENSER (R134a)	146E79
COMPRESSOR GROUP (R134a)	146E815
REFRIGERATION CONDENSER (R23)	146E911
REFRIGERATION EVAPORATOR (R23)	146E1013
SENSOR RETAINERS	147B337
EVAPORATOR FAN GROUP	150B97
COMPRESSOR MOUNTING (R23)	150B1019
ELECTRICAL COMPONENTS	150B1121
HIGH VOLTAGE TRAY	150B1231
NAMEPLATES (CRR 40 DF)	150B1447
HEAT SECTION DOOR	150E139
CONTROL BOX DOOR (mPC 2000 ID)	150G729
EVAPORATOR PANELS (2 & 3 FAN)	150G1541
USDA RECEPTACLES	157H243
COMPRESSOR GROUP (MAERSK)	172H017
STRUCTURAL COMPONENTS (MAERSK)	172H833



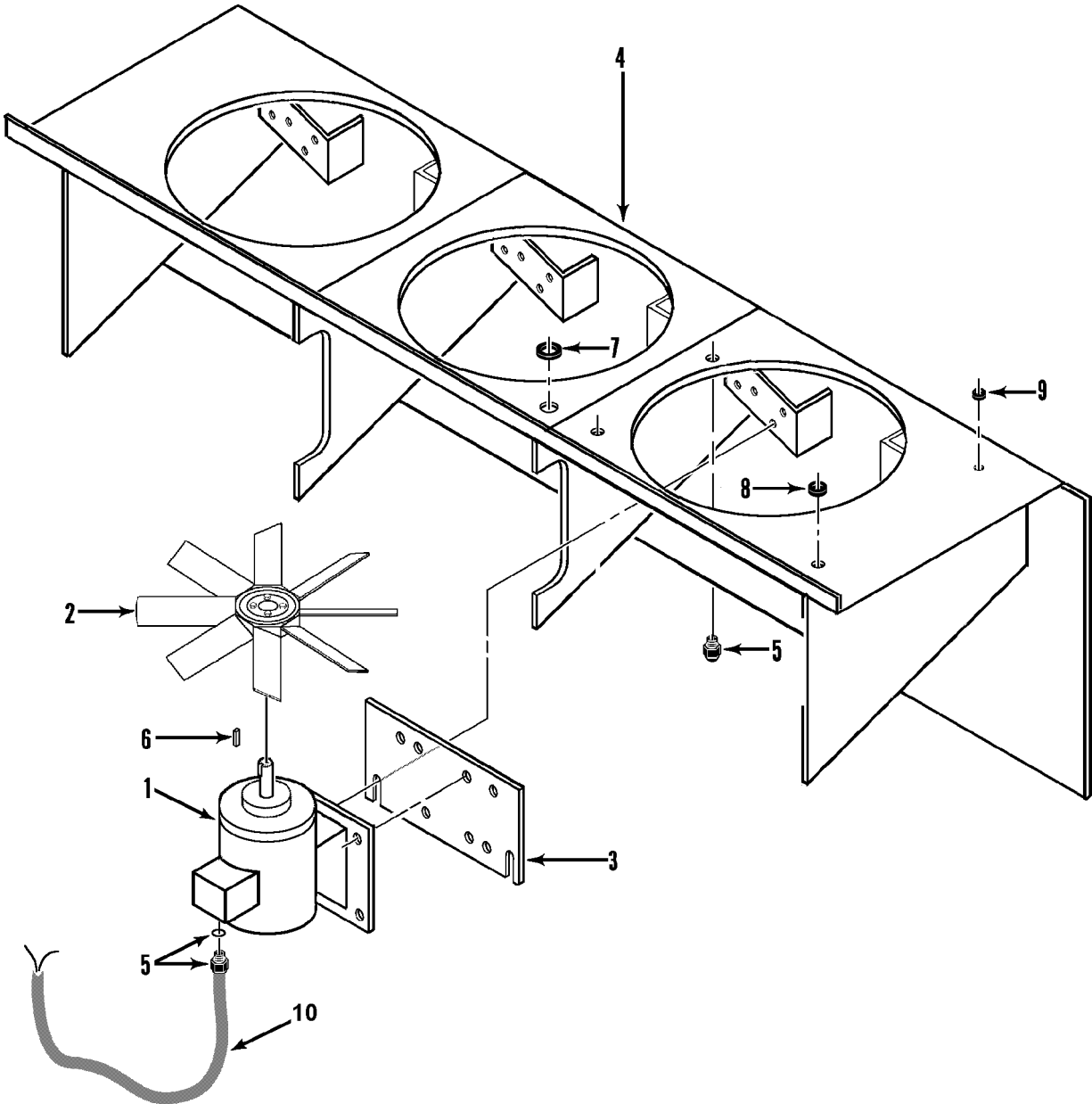


B/M	DESCRIPTION	Date
916120	CRR40 DF-120	10/98
098019	CRR40 Deep Freeze	10/98
460- 50208-DF	CRR40 DF	10/98



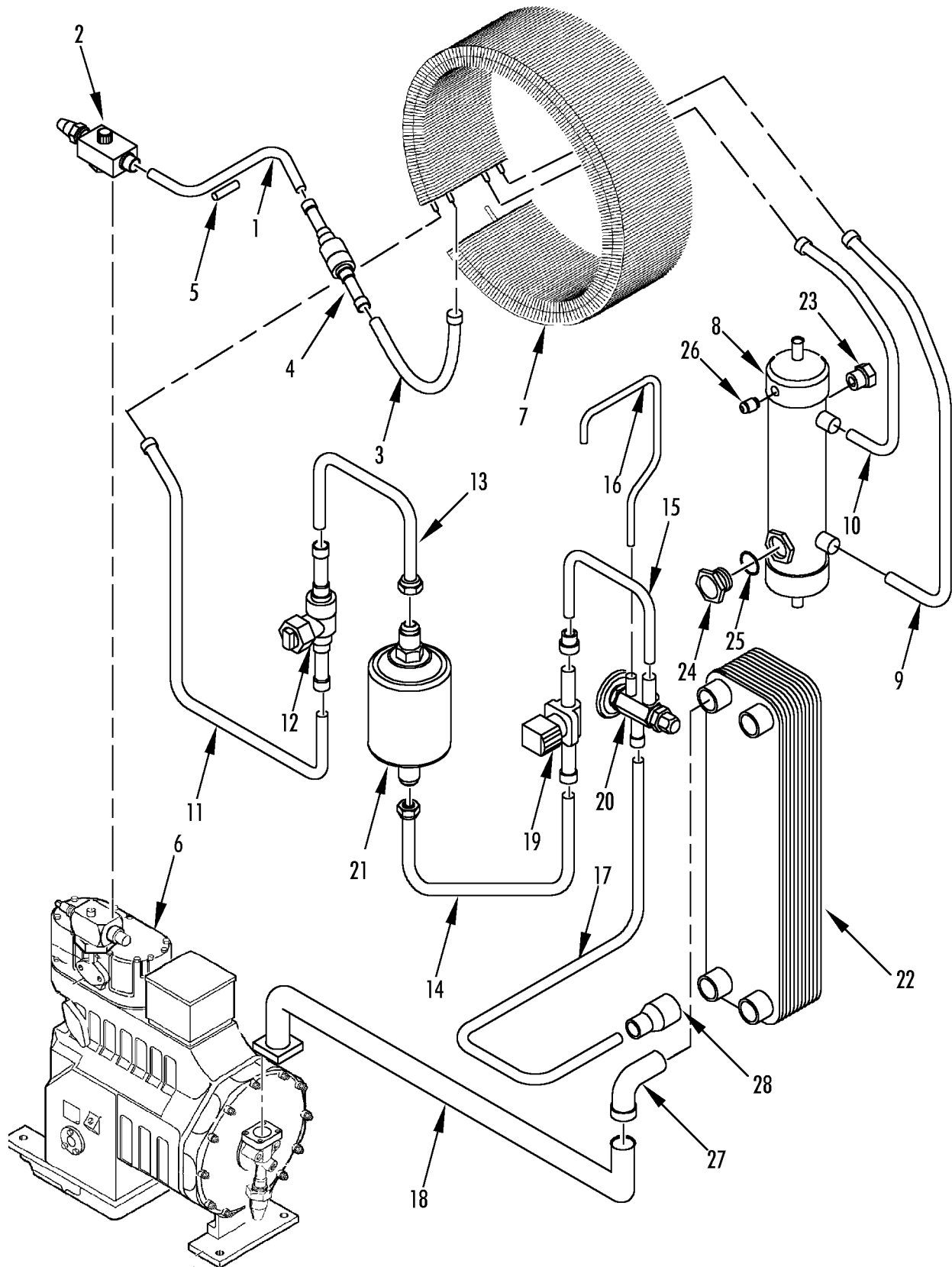


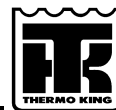
REF	PART#	DESCRIPTION	QTY
1	98-5925	ORIFICE - condenser fan	1
	503-120	GASKET	1
	55-7035	SCREW - guard	4
	55-8904	FLATWASHER (8.4 mm id)	10
	55-8893	FLATWASHER (6.4 mm id)	8
	55-9054	WASHER (nylon)	7
	55-9380	NUT (M8)	4
2	78-1167	FAN - condenser	1
3	104-677	MOTOR - condenser fan	1
	55-6993	SCREW - motor	4
	55-6988	FLATWASHER	8
	55-7342	LOCKWASHER	4
	55-9380	NUT	4
4	55-8907	GRIP - cable	1
	55-8908	LOCKNUT	1
5	33-367	GROMMET	1
6	41-2953	HARNESS - condenser fan	1
7	33-3043	EXTRUSION (6.26 ft)	1



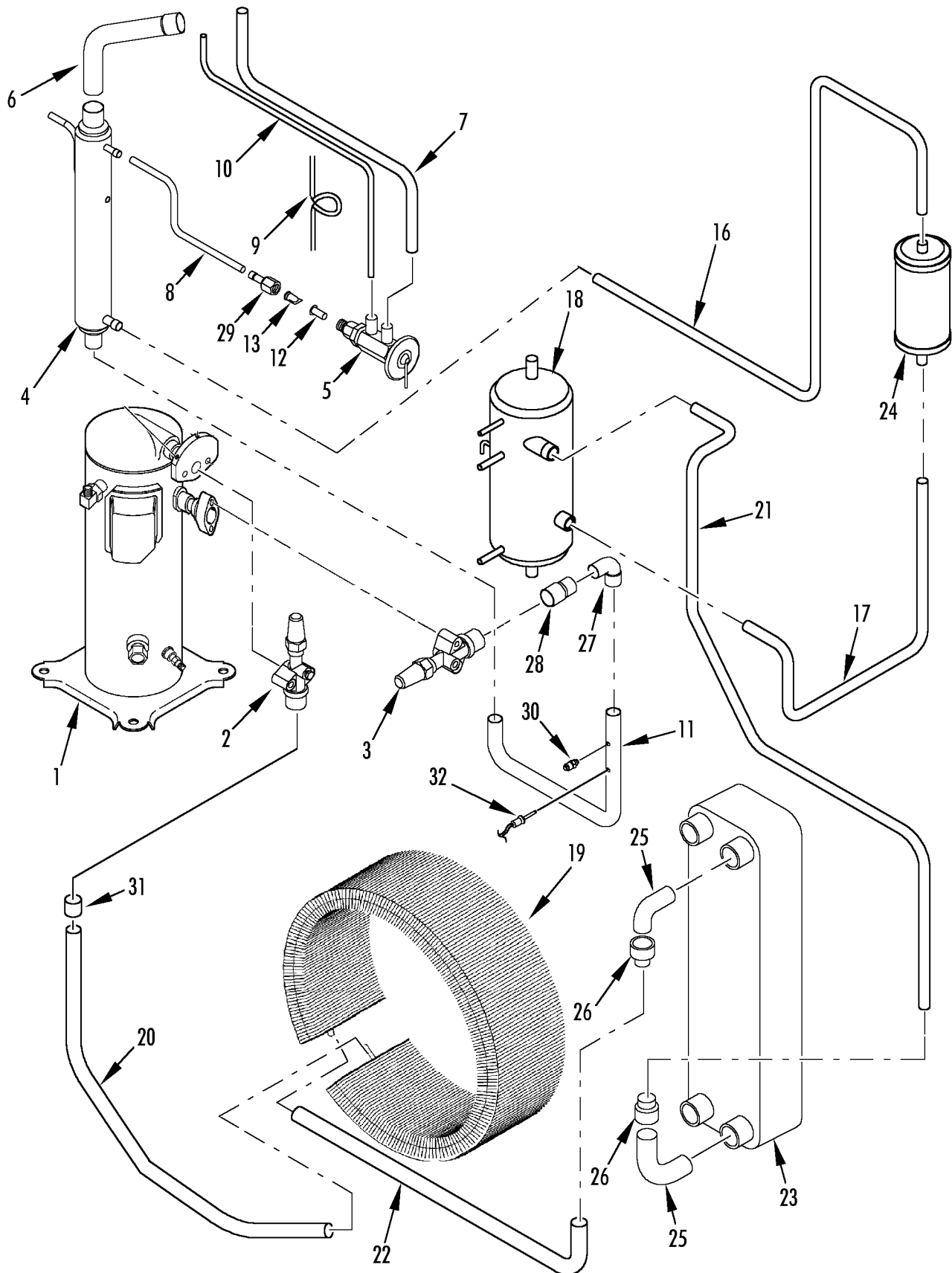


REF	PART#	DESCRIPTION	QTY
1	104-691	MOTOR - evaporator (two speed, low temp, see 150B11)	3
	77-1498	• BEARING - shaft end	1
	77-1401	• BEARING - opposite end	1
	44-8340	TERMINAL	20
	99-4931	NAMEPLATE - arrow	3
	55-6993	SCREW - motor	12
	55-8904	FLATWASHER	12
	55-7342	LOCKWASHER	12
	55-9380	NUT (M8)	12
2	508-165	FAN - evaporator (22 deg pitch)	3
3	91-8466	BRACKET - evaporator motor	3
	55-8903	SCREW - bracket	12
	55-8904	FLATWASHER	6
4	509-1780	SHROUD - evaporator	1
	55-8891	SCREW - section	17
5	55-8907	GRIP - harness & sensor	4
	55-8908	NUT - grip	4
6	55-2324	KEY - fan	3
7	33-3215	GROMMET (47 mm)	1
8	33-2946	GROMMET (37 mm)	1
9	33-3838	GROMMET (22 mm)	1
10	504-1519	HARNESS (3310 mm)	1
	504-1520	HARNESS (2760 mm)	1
	504-1521	HARNESS (2200 mm)	1



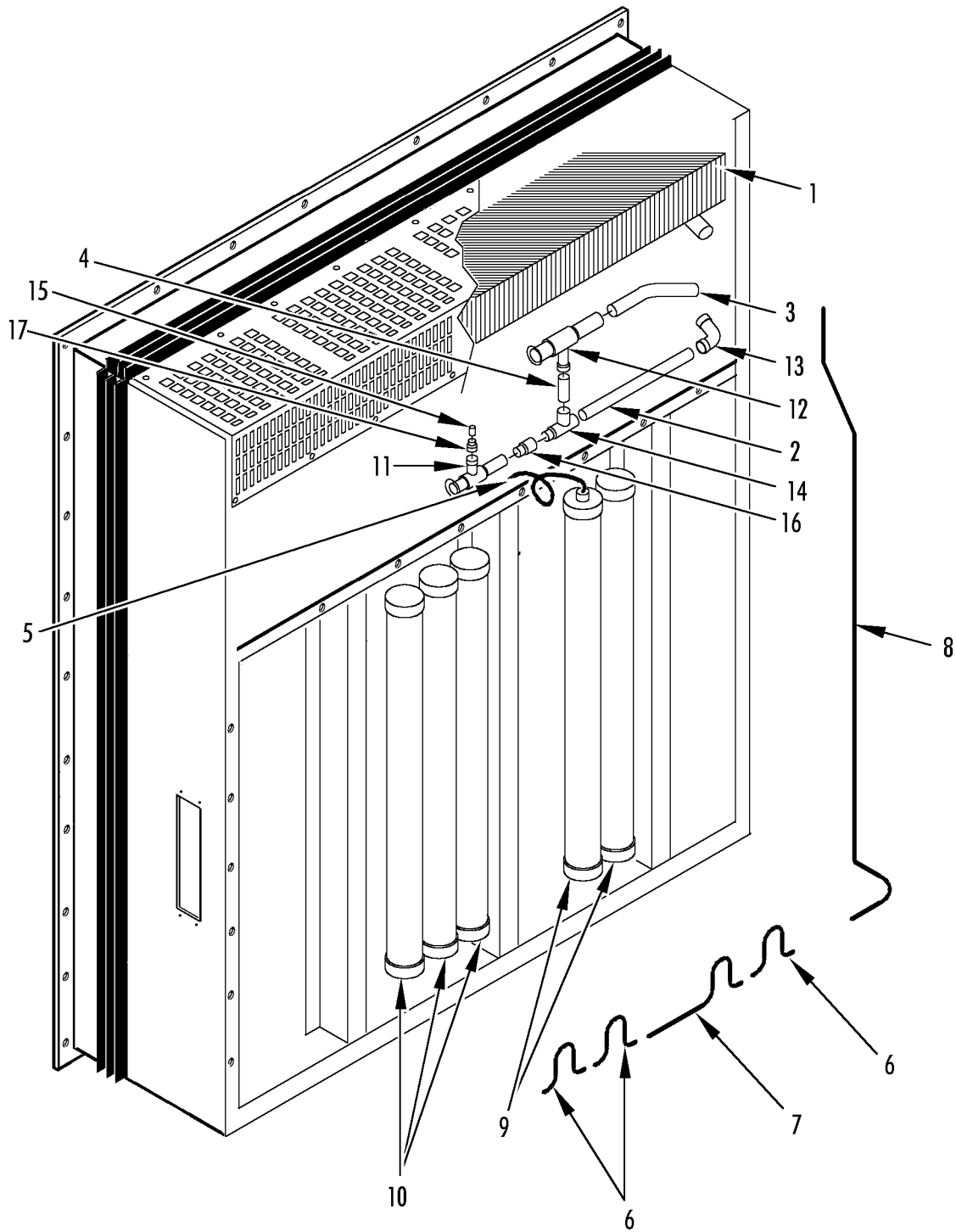


REF	PART#	DESCRIPTION	QTY
1	506-370	TUBE - discharge	1
2	66-9377	VALVE - rotalock	1
3	506-369	TUBE - discharge	1
4	66-8467	VALVE - check	1
5	504-1418	SENSOR - pocket	1
6	8102-743	COMPRESSOR	1
7	67-1589	COIL - condenser (DF)	1
8	67-1507	TANK - receiver (see 146E8)	1
9	66-9124	TUBE - rear to coil	1
10	66-9123	TUBE - rear to coil	1
11	66-9126	TUBE - check valve	1
12	66-9125	VALVE - ball (1/2 in)	1
13	66-9126	TUBE - drier	1
14	66-9117	TUBE - drier to solenoid	1
15	66-9118	TUBE - solenoid to expansion valve	1
16	66-9119	TUBE - bypass	1
17	66-9116	TUBE - expansion valve to heat expansion	1
18	66-9108	TUBE - suction	1
19	66-9167	VALVE - solenoid (normally closed)	1
	41-5460	COIL	1
	504-977	KIT - repair (Danfoss, normally closed, no stem)	1
20	66-9900	VALVE - expansion (or use 60-253 kit)	1
	61-1090	VALVE - expansion (non-adjustable)	1
21	66-9015	FILTER - dehydrator	1
	55-4390	HANGER - filter	2
22	506-423	HEAT EXCHANGER	1
23	506-364	FUSIBLE PLUG	1
24	66-8811	SIGHT GLASS - moisture	1
	203-393	SEALER - thread	A/R
25	33-3007	O-RING	1
26	11-2886	VALVE (Schrader)	1
27	55-3191	ELBOW	1
28	55-3310	REDUCER	1



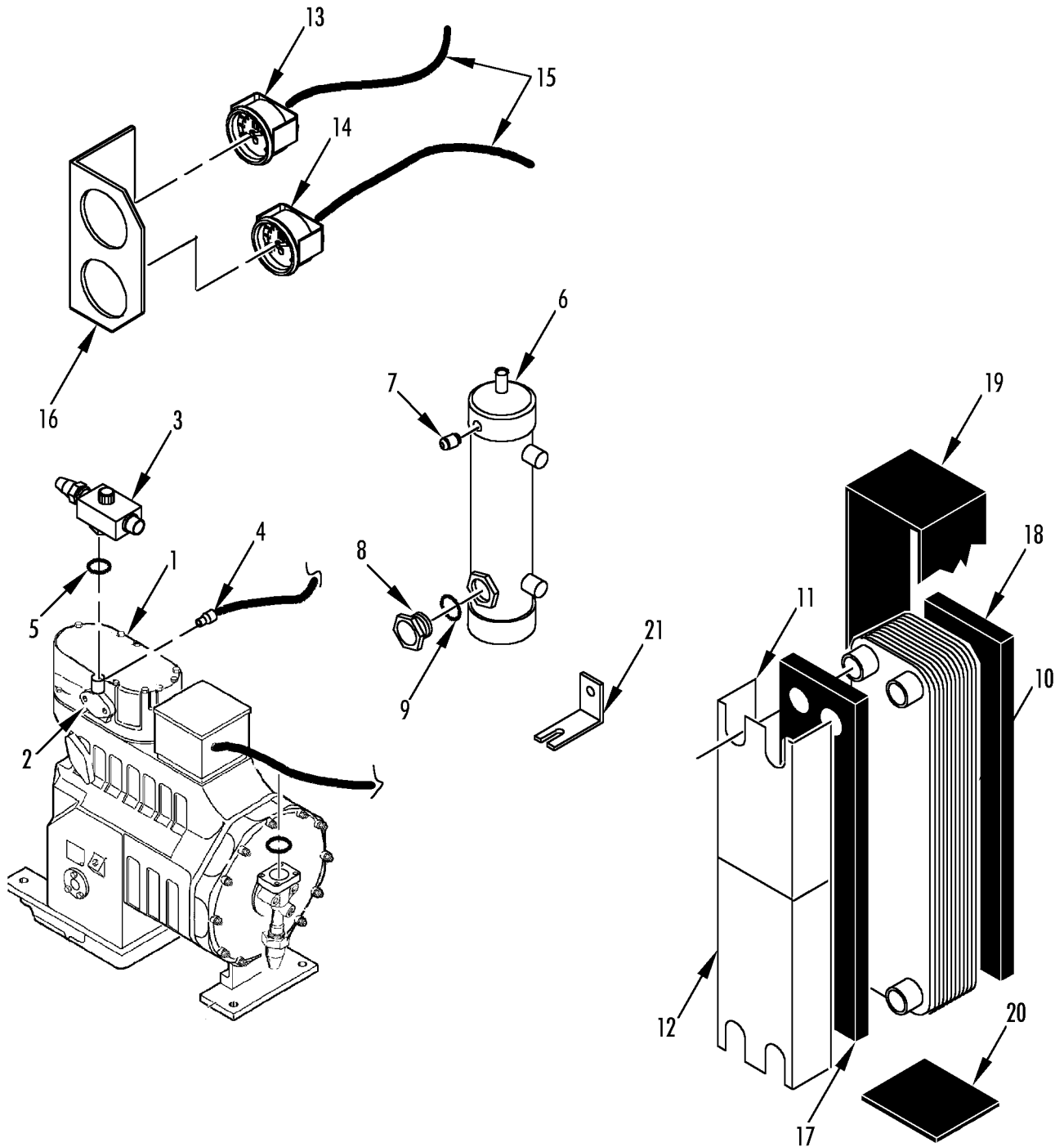


REF	PART#	DESCRIPTION	QTY
1	102-796	COMPRESSOR - scroll (R23, see 150B10)	1
2	66-3942	VALVE - discharge (R23)	1
3	66-1916	VALVE - suction (R23)	1
4	66-9885	HEAT EXCHANGER (R23)	1
5	506-431	VALVE - expansion (R23)	1
6	506-416	TUBE - heat exchanger	1
7	506-417	TUBE - expansion valve	1
8	506-418	TUBE - expansion valve	1
9	66-9410	TUBE (#21)	1
10	506-419	TUBE - bypass	1
11	506-415	TUBE - heat exchanger	1
12	66-9877	ORIFICE	1
13	66-9878	FILTER	1
14	66-9879	ELBOW	1
15	506-415	TUBE (#15)	1
16	506-414	TUBE (#14)	1
17	506-420	TUBE (#20)	1
18	67-1590	TANK - receiver (R23, see 150B10)	1
19	67-1589	COIL - condenser (R134a)	1
20	66-9886	TUBE - condenser coil	1
21	66-9887	TUBE - receiver tank to heat exchanger	1
22	66-9115	TUBE - condenser to heat exchanger	1
23	506-423	HEAT EXCHANGER (R134a, see 146E8)	1
24	506-421	DRIER (R23)	1
25	66-9078	ELBOW	2
26	55-3310	REDUCER	2
27	55-1122	ELBOW	1
28	55-1292	BUSHING	1
29	66-9880	ADAPTER - expansion valve	1
30	66-9842	VALVE	1
31	55-3346	BUSHING	1
32	41-3338	SWITCH - lpc0	1



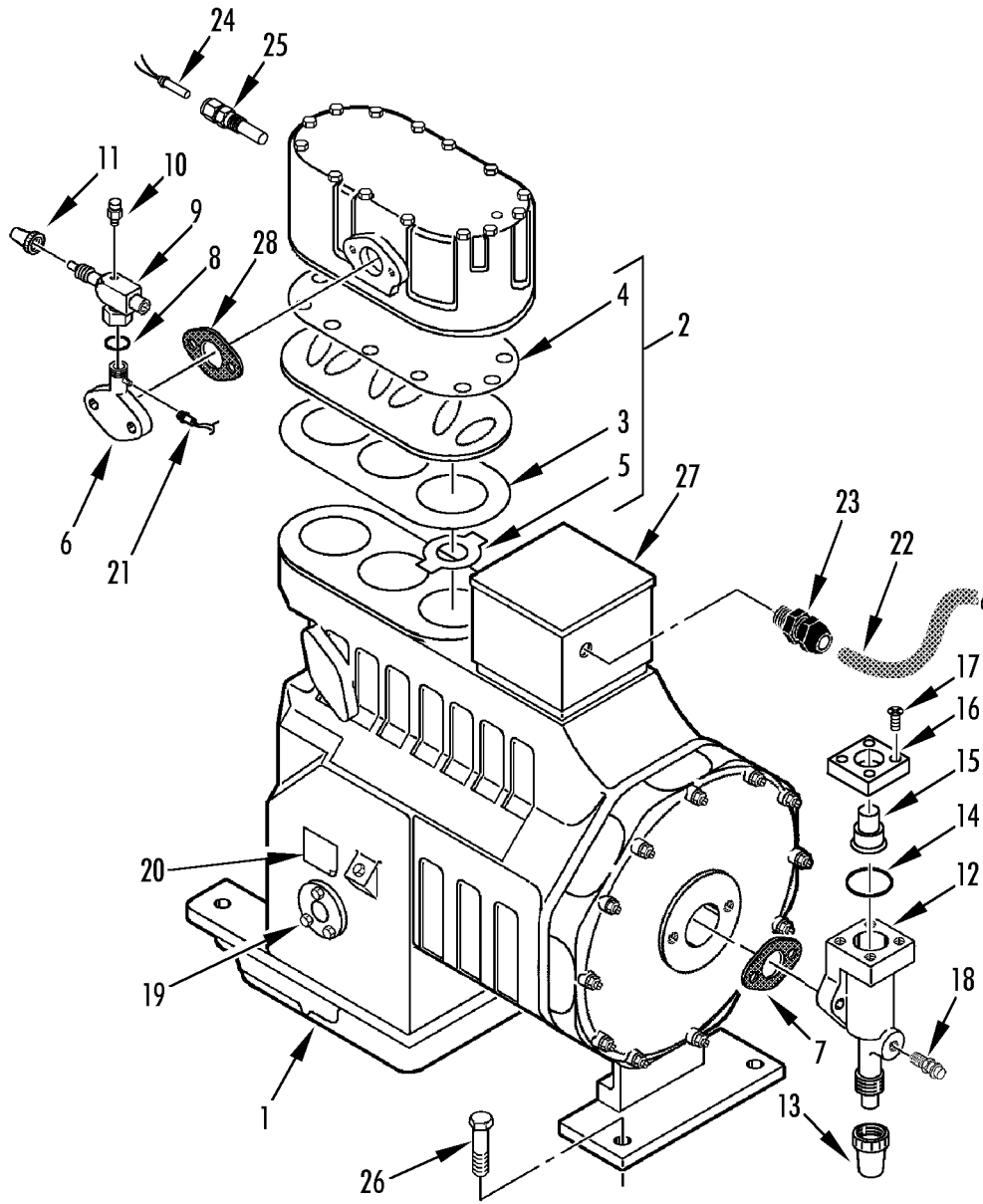


REF	PART#	DESCRIPTION	QTY
1	67-1591	COIL - evaporator	1
2	66-9110	TUBE - suction	1
3	66-9109	TUBE - suction	1
4	66-9111	TUBE - cpr valve	1
5	66-9881	TUBE - to tank receiver	1
6	66-9882	TUBE	3
7	66-9120	TUBE (#31)	1
8	66-9889	TUBE (#28)	1
9	67-1506	TANK - receiver (2 tanks)	1
10	67-1505	TANK - receiver (3 tanks)	1
11	504-1025	VALVE - discharge pressure regulator	1
12	506-160	VALVE - suction pressure regulator	1
13	55-3682	ELBOW - evaporator to KVR	1
14	55-5616	TEE	1
15	55-9305	REDUCER	1
16	66-9883	REDUCER	1
17	66-9884	REDUCER	1



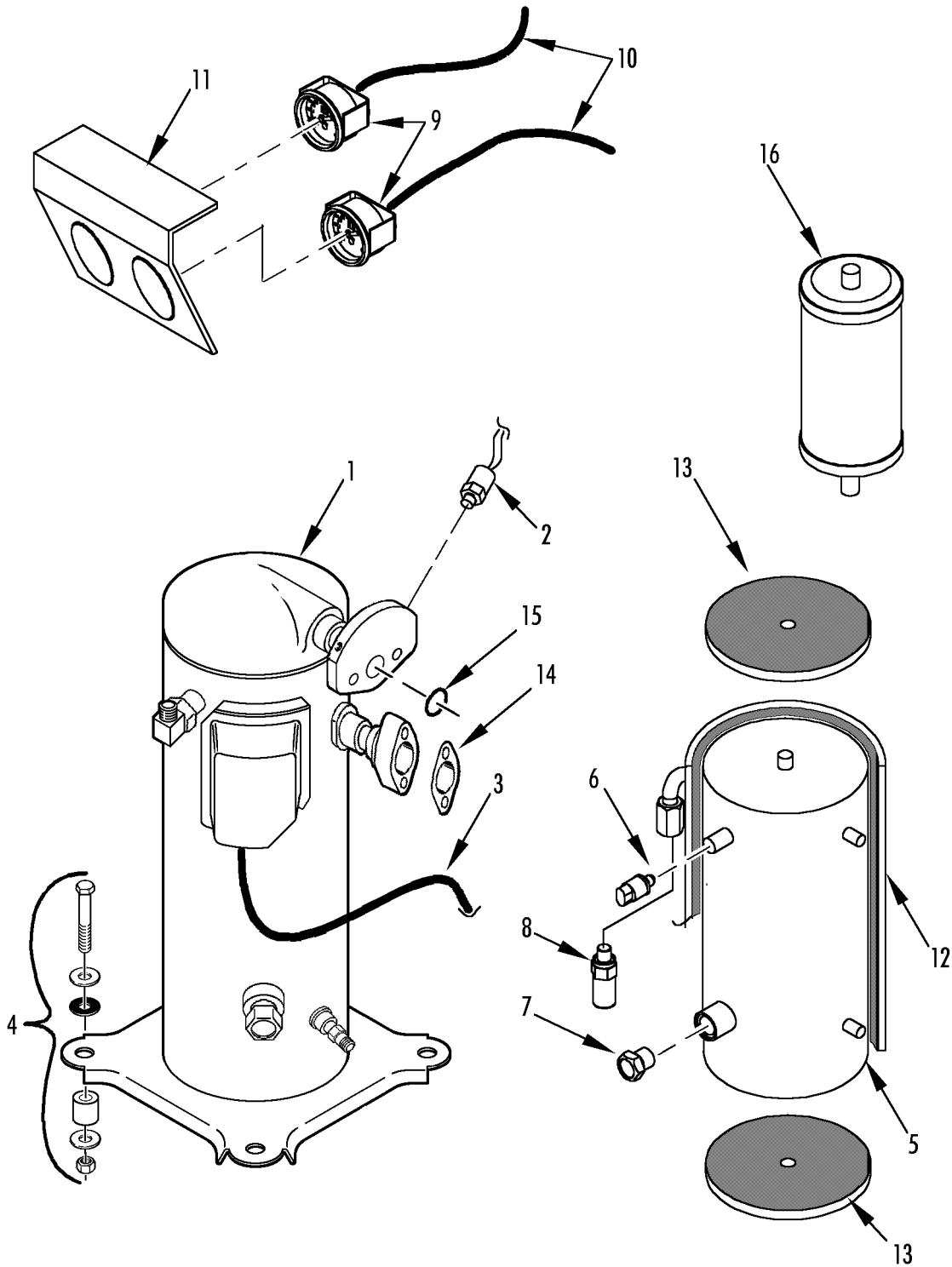


REF	PART#	DESCRIPTION	QTY
1	8102-743	COMPRESSOR (see 146F2)	1
2	22-1186	ADAPTER - discharge valve	1
3	66-9150	VALVE - discharge	1
4	41-3250	SWITCH - hpco	1
5	33-981	GASKET - valve	1
6	67-1507	TANK - receiver	1
7	506-364	PLUG - fusible	1
	203-393	SEALER - thread	A/R
8	66-8811	SIGHT GLASS - moisture	1
9	33-3007	O-RING	1
10	506-423	HEAT EXCHANGER	1
11	91-8635	SCREEN - heat exchanger	1
12	91-8636	SCREEN - heat exchanger	1
13	66-9890	GAUGE - pressure (discharge, 2-1/2 in)	1
14	506-413	GAUGE - pressure (suction, 2-1/2 in)	1
	506-363	GASKET - gauge	2
15	506-111	PIPE - gauge	2
16	91-8637	BRACKET	1
17	91-9679	INSULATION - exchanger	1
18	91-9680	INSULATION - exchanger	1
19	91-9681	INSULATION - exchanger	1
20	91-9682	INSULATION - exchanger	1
21	509-1786	BRACKET - receiver tank	2





REF	PART#	DESCRIPTION	QTY
1	8102-743	COMPRESSOR (3DST, CRR 40 & DF, see note)	1
2	22-1051	• KIT - valve plate	1
	22-1132	KIT - valve plate (Delta Reed)	1
3	33-2510	•• GASKET - valve plate	1
	33-3513	GASKET - valve plate (Delta Reed)	1
4	503-278	•• GASKET - cylinder head	1
5	502-240	•• KIT - reed suction (non Delta Reed only)	1
	203-516	OIL - compressor	A/R
6	22-1186	ADAPTER - discharge	1
	55-2747	SCREW - adapter	2
	55-2159	LOCKWASHER	2
	55-2173	FLATWASHER	2
7	33-3175	GASKET - discharge & suction	2
8	33-981	GASKET - valve	1
9	66-9377	VALVE - discharge	1
10	66-6610	ADAPTER - service (discharge)	1
	66-7182	• CAP - adapter (red)	1
11	506-161	CAP - discharge valve	1
12	66-9149	VALVE - suction	1
	61-2230	VALVE - suction (800E)	1
13	506-165	CAP - suction valve	1
14	503-230	GASKET - suction	1
15	66-1845	COUPLING	1
16	66-2457	COLLAR	1
17	55-3490	SCREW - collar	4
18	66-6607	FITTING - service (lowside)	1
	66-7183	• CAP - fitting	1
19	22-398	SIGHT GLASS - oil	1
	33-2223	GASKET - sight glass	1
20	509-1153	LABEL - compressor oil	1
21	41-3250	SWITCH - hpco	1
22	41-2716	CABLE - compressor power	1
23	55-5257	FITTING - harness	1
24	41-4300	PROBE - high temperature	1
25	22-1161	POCKET - sensor	1
26	55-9037	SCREW - compressor (50 mm)	4
	55-7360	FLATWASHER	4
	55-5025	NUT	4
27	92-1682	BOX - junction (plastic, Maersk only)	1
28	33-3175	GASKET - discharge (rubberized)	1

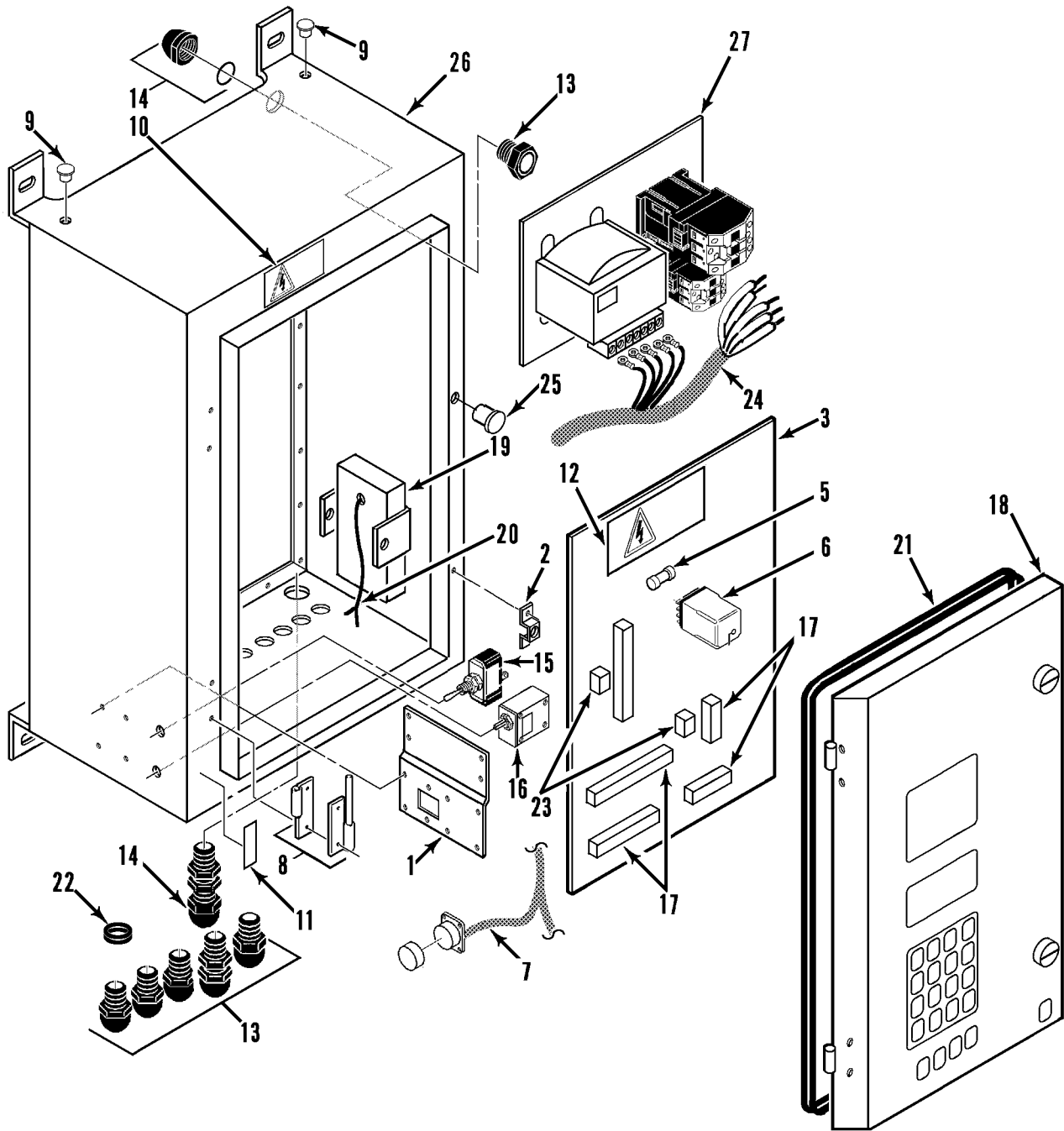




REF	PART#	DESCRIPTION	QTY
1	102-796	COMPRESSOR - scroll	1
2	41-4523	SWITCH - hpco	1
3	41-2485	WIRING - compressor	1
4	55-9320	SPACER - compressor	4
	55-8911	SCREW - compressor	4
	55-8912	FLATWASHER	4
	55-9012	WASHER - vibration	4
	55-7060	FLATWASHER	4
	55-8992	NUT	4
5	67-1590	TANK - receiver	1
6	55-1983	• CAP - flare	1
	66-9891	• VALVE (Schrader)	1
7	66-9892	• SIGHT GLASS - receiver	1
	33-3007	• GASKET - sight glass	1
8	66-7392	• VALVE - relief	1
	33-1015	• O-RING - relief valve	1
	55-9321	NUT - receiver tank	2
	55-9058	FLATWASHER	2
	55-7347	LOCKWASHER	2
9	66-9890	GAUGE	2
	506-363	GASKET - gauge	2
10	506-111	PIPE - gauge	2
11	91-8639	BRACKET - gauge	1
12	91-8638	INSULATION (side)	1
13	91-9819	INSULATION (top & bottom)	2
14	33-2805	GASKET - valve	1
15	33-727	O-RING - valve	1
16	506-421	DRIER	1

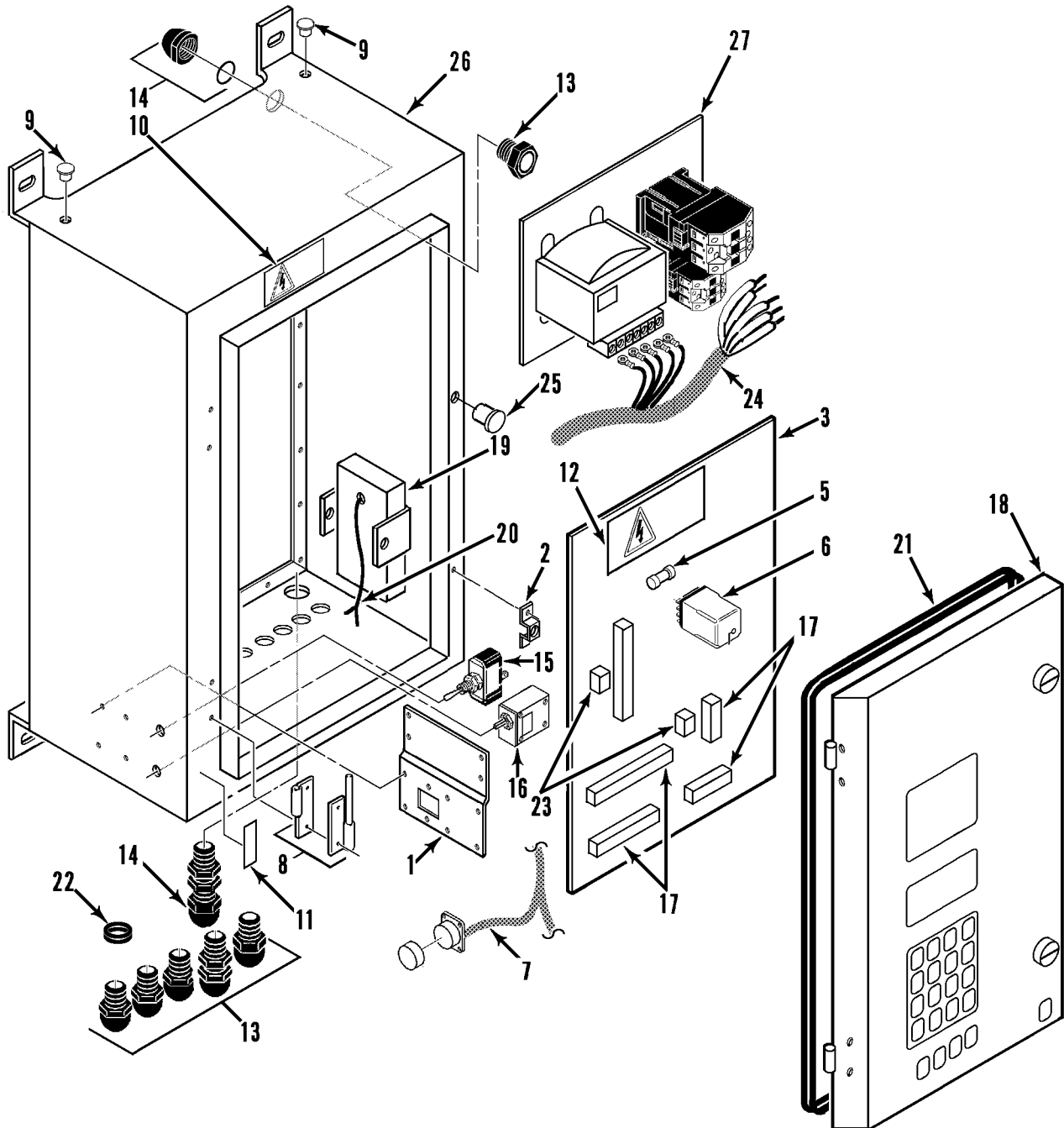


REF	PART#	DESCRIPTION	QTY
1	504-1519	HARNESS - evaporator motor	1
2	504-1520	HARNESS - evaporator motor	1
3	504-1521	HARNESS - evaporator motor	1
4	41-2490	CABLE - power	1
	504-1528	TERMINAL - spade	4
	41-1976	PLUG - power (Minnekes)	1
5	41-4300	SENSOR - compressor	2
6	40-791	KIT - sensor (ambient)	1
7	504-1529	SENSOR - defrost, return & supply	3
8	104-691	MOTOR - evaporator fan	3
9	504-602	SWITCH - temperature	1
10	45-1791	HEATER	12
11	66-9167	VALVE - solenoid (see 146E7)	1
12	104-666	MOTOR - condenser fan (see 146E14)	1
13	509-1783	BRACKET - heater	1
14	509-1781	BRACKET - heater	2
	55-8891	SCREW - bracket	11
15	8102-743	COMPRESSOR (see 146F2)	1
16	NSS	BOX - control (see 146D6)	1
	55-8875	SCREW - control box	4
	55-8893	WASHER	4
	55-8914	WASHER (nylon)	4
17	41-2953	HARNESS - condenser fan	1
18	91-8140	SPRING - heater	12
19	41-2716	HARNESS - compressor	1
20	41-2489	HARNESS - heater	1
21	504-1522	HARNESS - defrost switch	1
22	102-796	COMPRESSOR - scroll (R23, see 146E9)	1



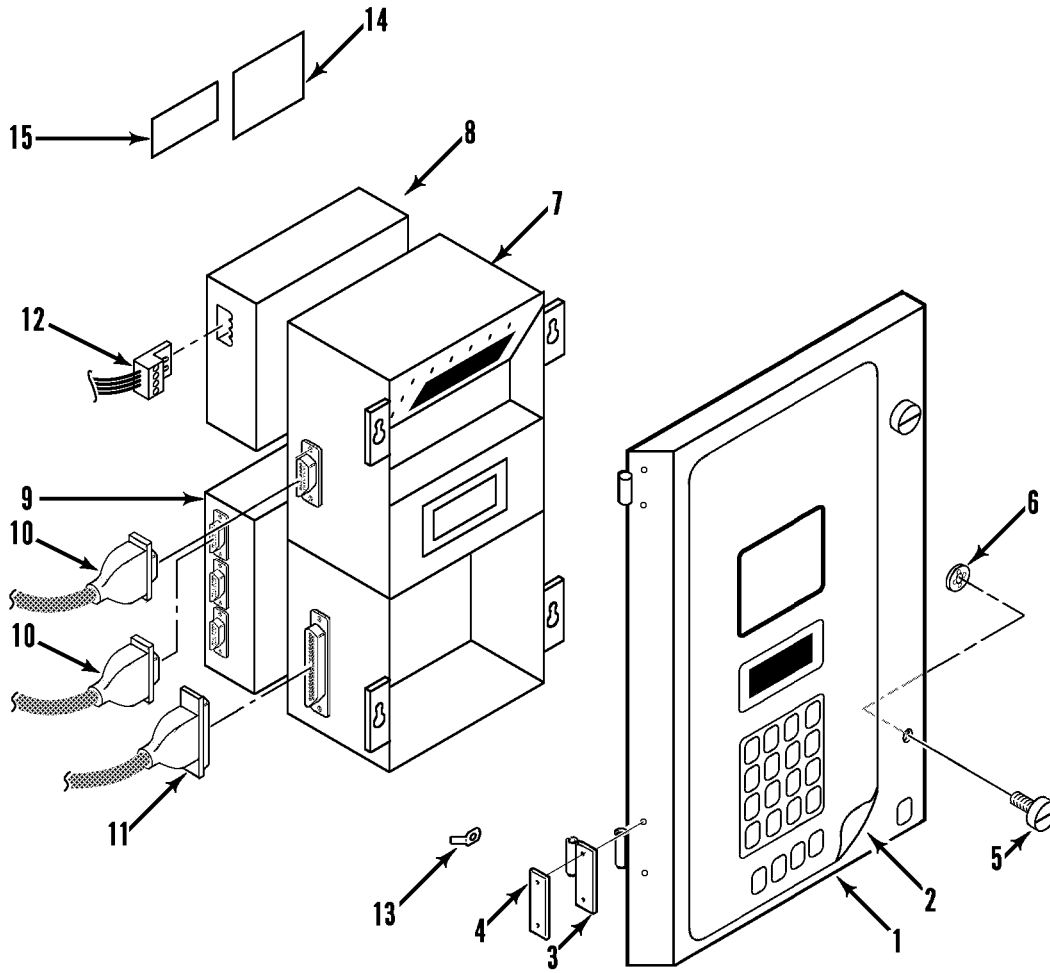


REF	PART#	DESCRIPTION	QTY
1	509-1606	BRACKET - diagram (060-83007-02)	1
	55-3272	RIVET - bracket (K21-50047-05)	4
2	92-237	BRACKET (w/ receptacle) (360-56028-00)	2
	509-1174	LABEL (K35-7111200-00)	1
	509-953	INSULATOR (K28-50067-12)	1
3	845-2834	BOARD - relay (remanufactured)	1
	55-9166	SCREW - board (K21-13749-00)	6
4	505-570	• PLUG - seal (K28-51785-12)	1
5	504-970	• FUSE (20 amp) (K25-70360-00)	3
6	504-514	• RELAY - power (K24-58162-02)	5
	92-860	CLIP - retaining	5
7	41-2853	CABLE & PLUG - retriever (cannon threaded) (360-53165-32)	1
	55-9211	RIVET - plug (K21-50047-05)	4
	505-416	CAP - plug (K28-52070-02)	1
8	509-1007	HINGE - cover (K29-17880-02)	2
	509-955	INSULATOR (K28-50067-16)	2
	55-8875	SCREW - hinge (K21-50224-16)	4
	55-8877	WASHER (nylon) (K21-50490-06)	4
	55-8893	FLATWASHER (K21-50401-06)	4
	505-566	LOCKWASHER (K21-50431-06)	4
	55-7042	NUT (K21-50100-06)	4
9	505-408	PLUG - seal (K28-51785-18)	3
10	509-1612	LABEL - high voltage (K35-71125-00)	1
	91-9272	LABEL - on/off (w/ water cooler) (K35-725-40)	1
11	509-1156	LABEL - on/off (K35-52130-00)	1
12	509-1155	LABEL - relay (K35-52097-00)	1
13	55-8907	FITTING - gland (K25-51784-19)	6
	55-8908	NUT (K25-58202-16)	6
14	55-5257	FITTING - gland (K25-51784-21)	2
	505-569	NUT (K25-58202-21)	2
15	41-3595	SWITCH - unit on/off (K24-07458-00)	1
	92-239	BOOT - terminal (K24-17239-00)	1
16	41-3276	BREAKER - circuit (K24-52128-01)	1
	504-381	BOOT - circuit (K24-18164-00)	1
17	504-841	TERMINAL BLOCK (4 pole) (K25-51537-04)	1
	504-842	BLOCK - terminal (5 pole) (K25-51537-05)	1
	504-845	BLOCK - terminal (8 pole) (K25-51537-08)	1
	41-3599	BLOCK - terminal (14 pole) (K25-51537-14)	1
	41-3608	BLOCK - terminal (18 pole) (K25-51537-18)	1
18	NSS	DOOR - controller (mP-C 2000, see 140D9; mP-C 2000 ID, see 150G7)	1
19	203-509	BATTERY (12V, 1.9 AH) (K24-51763-00)	1



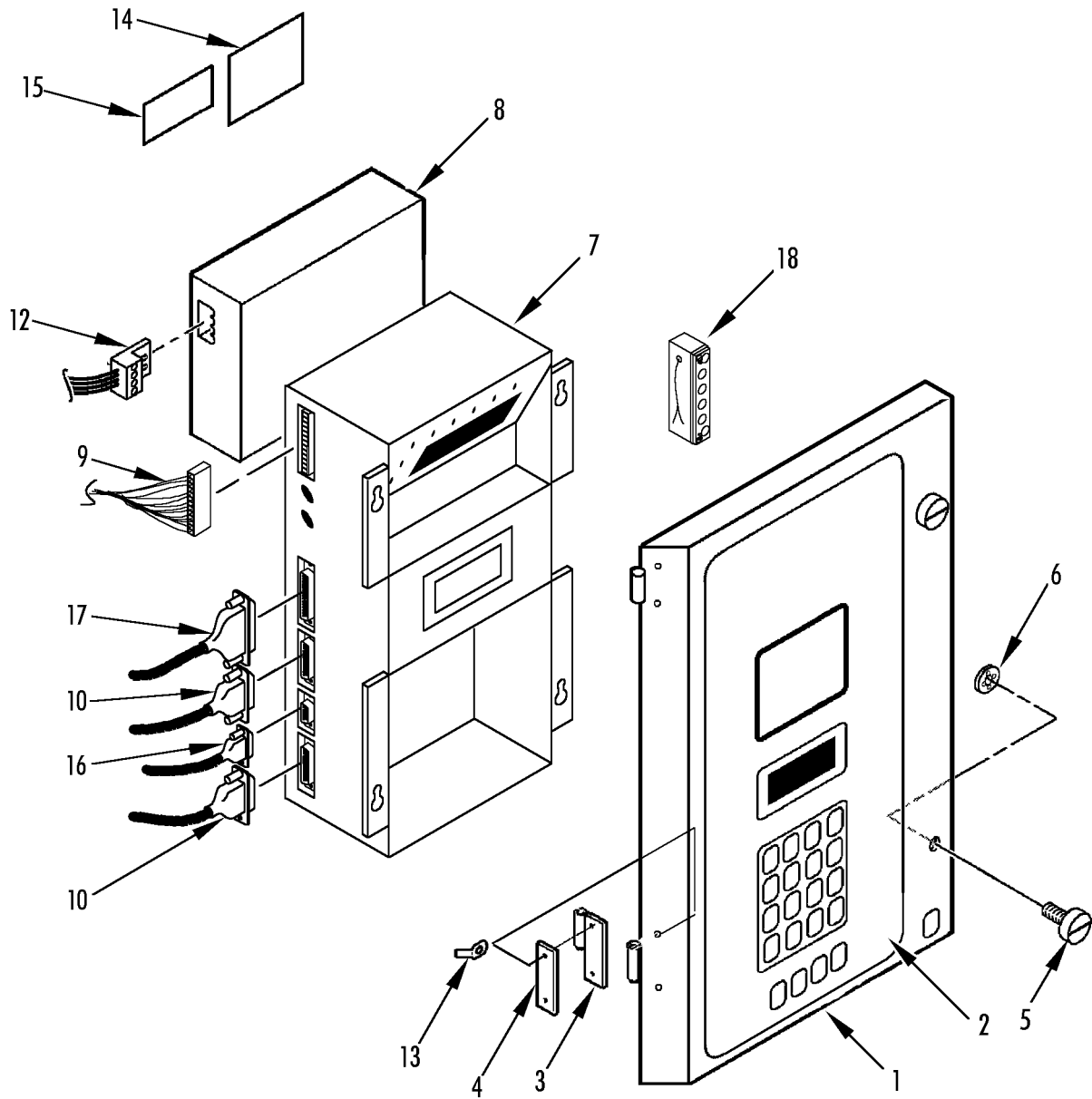


REF	PART#	DESCRIPTION	QTY
	55-8921	SCREW - battery (K21-50224-80)	1
	55-8893	WASHER (K21-50401-06)	2
	55-8877	WASHER (nylon) (K21-50490-06)	2
	55-7042	NUT (K21-50100-06)	1
20	41-3335	CABLE - battery (360-53165-29)	1
21	503-119	GASKET - cover (K28-72470-00)	1
22	33-3838	GROMMET (K28-58207-04)	1
23	41-2832	CONNECTOR - plug (2 pin)	1
24	41-2486	HARNESS (360-53165-28)	1
25	505-570	PLUG - seal (K28-51785-12)	1
26	98-5454	BOX - control (360-83000-02)	1
	55-8875	SCREW - control box (K21-50224-16)	4
27	NSS	PLATE - assembly (TNE 508-34 see 142F2; CRR 40 DF see 150B12)	1



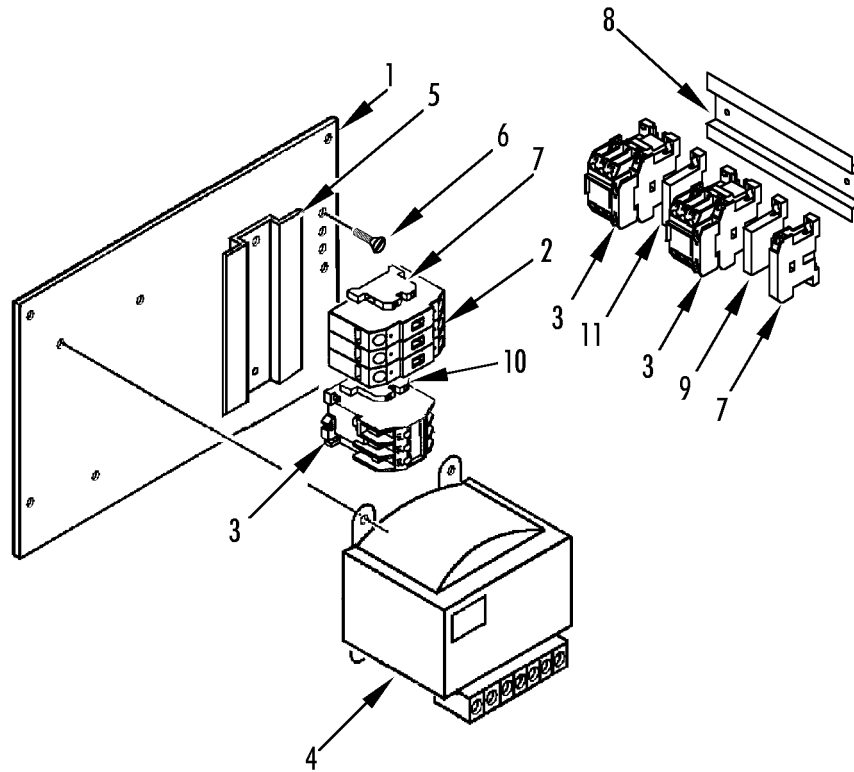


REF	PART#	DESCRIPTION	QTY
1	91-9380	DOOR - control box (360-80890-02)	1
2	41-4142	KEYPAD (mP-C) (K31-71114-00)	1
3	91-9381	HINGE - door (K29-17880-01)	2
	505-583	SCREW - hinge (K21-50203-16)	4
	55-9444	WASHER (nylon) (K21-50490-05)	4
	55-7033	WASHER (K21-50401-05)	4
	505-511	NUT (K21-50100-05)	4
4	55-9392	INSULATOR (K28-50067-02)	2
5	505-585	SCREW - door (quick open) (K21-72462-00)	2
6	55-8919	RETAINER - screw (K21-16182-00)	2
7	845-1909	CONTROLLER (MP3000)	1
	203-506	BATTERY - lithium (mPC 2000)	1
	505-511	NUT - controller (K21-50100-05)	4
8	845-1898	MODEM - RMM (K31-52169-00)	1
9	845-1904	DATALOGGER - mP-C 2000 (reman) (K31-72052-00)	1
10	41-3602	CABLE - connecting (25 pin) (360-53165-24)	2
11	41-2835	CABLE - connecting (37 pin) (360-53165-25)	1
12	504-277	CABLE - connecting (RMM) (360-53165-31)	1
13	505-586	ADAPTER - push-on (K25-10436-00)	1
	505-511	NUT (K21-50100-05)	1
14	91-9382	NAMEPLATE - controller warning (K35-71091-00)	1
15	91-9383	NAMEPLATE - phase select (K35-71105-00)	1
	504-1228	CABLE - psion retriever (K31-52140-00)	1
	504-1375	CABLE - multi (360-81349-00)	1
	504-250	CABLE - connection (360-53160-62)	1



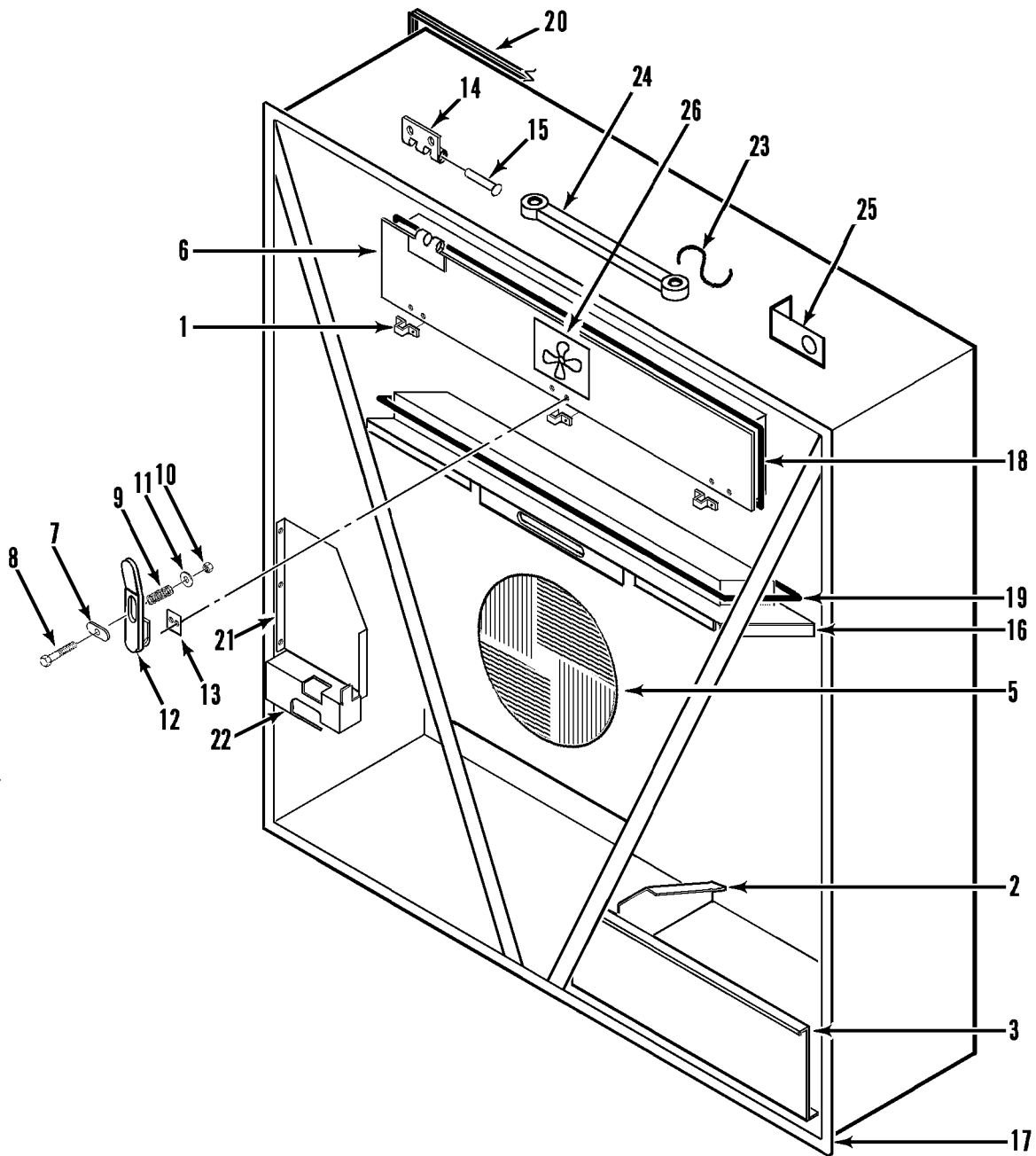


REF	PART#	DESCRIPTION	QTY
1	91-9380	DOOR - control box	1
2	41-4142	KEYPAD (mP-C 2000)	1
3	91-9381	HINGE - door	2
	55-7407	SCREW - hinge	4
	55-9444	WASHER (nylon)	4
	55-7033	WASHER	4
	55-7034	NUT	4
4	55-9382	INSULATOR - hinge	2
5	505-181	SCREW - door	2
6	55-8919	RETAINER - screw	2
7	845-1909	CONTROLLER (mP-C 2000 ID)	1
8	845-1898	MODEM - RMM	1
9	41-3335	CABLE - battery	1
10	41-3602	CABLE - connecting (25 pin, No. 3)	2
11	Not Used		
12	41-3603	CABLE - connecting (RMM)	1
13	55-9395	ADAPTER - push-on	1
	505-511	NUT	1
14	91-9382	NAMEPLATE - controller warning	1
15	91-9383	NAMEPLATE - phase select	1
16	41-2853	CABLE & PLUG - retriever (cannon threaded)	1
17	41-2835	CABLE - connecting (No. 2)	1



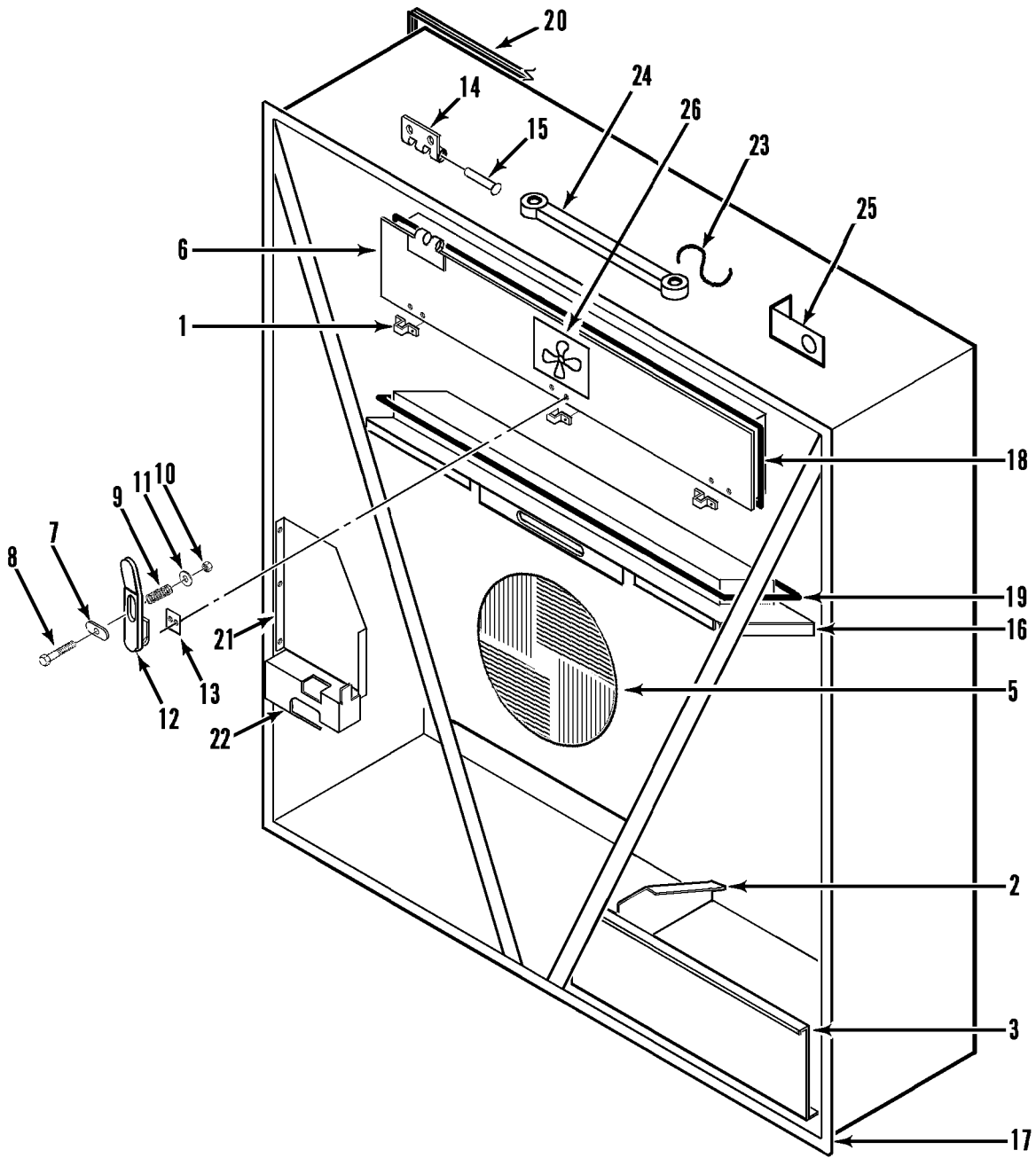


REF	PART#	DESCRIPTION	QTY
1	509-1609	PLATE - bottom	1
	55-7372	SCREW - plate to box	4
	55-7008	NUT	4
2	504-1526	BREAKER - circuit (32 amp)	1
3	41-3605	CONTACTOR (AC, 50/60, CI 25)	3
4	41-3317	TRANSFORMER	1
	55-7372	SCREW - transformer	4
5	91-9273	RAIL - din	1
	505-565	LOCKWASHER	6
6	55-9166	SCREW (pan hd)	9
7	91-8737	BLOCK - ground	3
8	92-1928	RAIN - din	1
9	504-865	BLOCK - terminal	1
10	504-900	CONTACT - auxiliary	1
11	41-2206	INTERLOCK	1



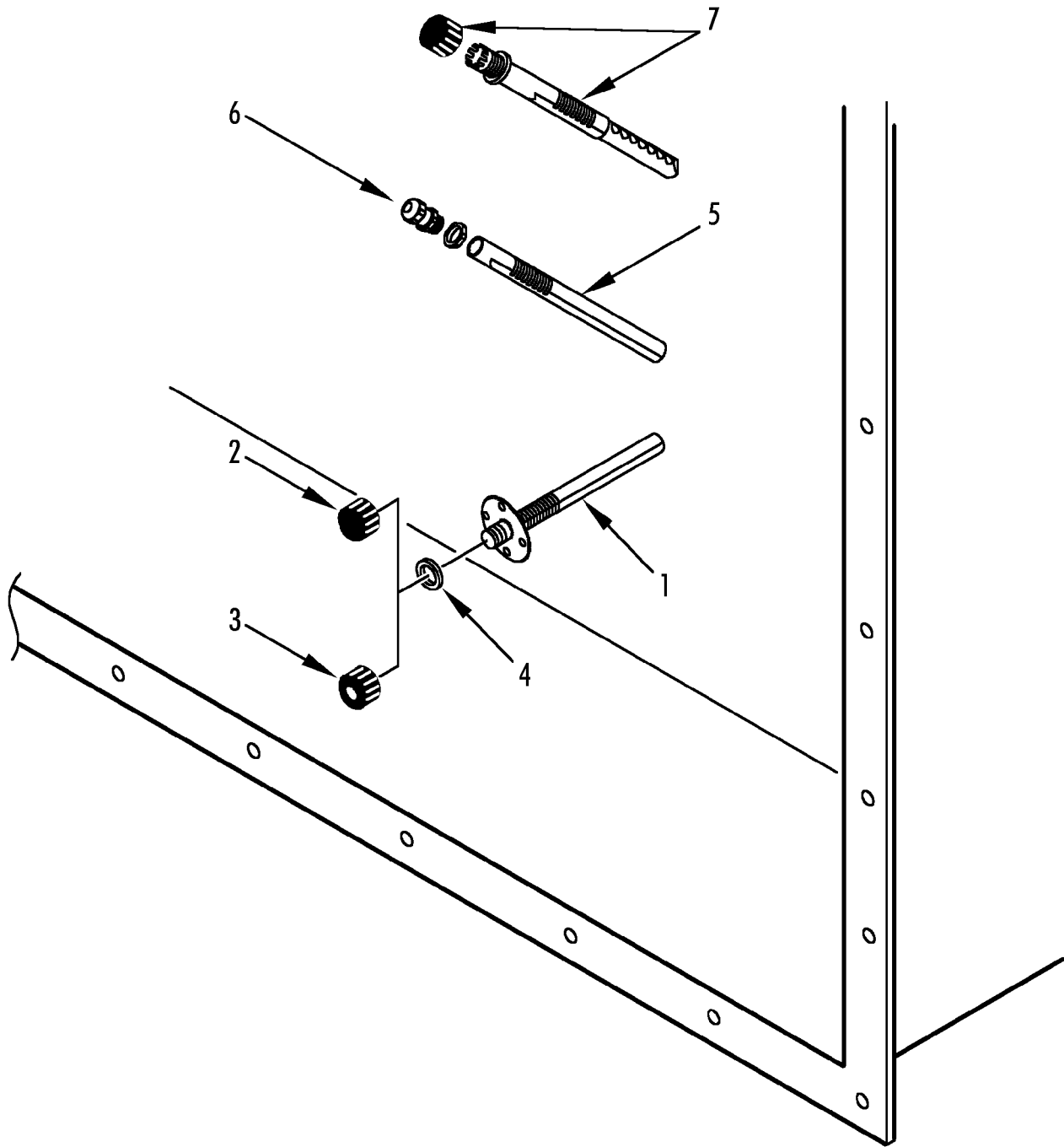


REF	PART#	DESCRIPTION	QTY
1	91-8195	KEEPER - door latch	3
	55-7172	SCREW - keeper	6
	55-6995	WASHER	6
	55-8933	WASHER (nylon)	6
2	91-8108	BRACKET - frame	1
	55-8883	SCREW - bracket	3
	55-6988	WASHER	6
	55-8882	WASHER (nylon)	6
	55-9380	NUT	3
3	91-9504	PLATE - cable storage (front)	1
	55-8879	SCREW - plate	4
	55-8893	FLATWASHER	6
	55-8877	WASHER (nylon)	6
	55-7008	NUT	2
4	Not Used		
5	98-5925	GRILLE - condenser	1
	55-6994	SCREW - grille	4
	55-7357	FLATWASHER	4
	55-9054	WASHER (nylon)	6
6	509-755	DOOR - evaporator (3 fan)	1
	92-2995	HINGE - evap door	3
	51-620	RIVET - hinge	12
	509-1789	SEAL - door	A/R
7	91-9040	KNOB	3
8	55-8879	SCREW - door	3
9	91-8199	SPRING	3
10	55-7354	NUT	3
11	55-8877	WASHER (nylon)	3
12	91-9041	LATCH - door	3
	55-2864	RIVET - latch	6
13	91-8134	INSULATOR - latch	3
14	509-1654	HINGE	3
	55-7341	SCREW - hinge	6
	55-8882	WASHER (nylon)	6
15	91-8256	PIN - hinge (w/ snap)	3
16	509-1784	DOOR - heater section	1
	55-8883	SCREW - door	8
	55-8882	WASHER (nylon)	8
	55-8904	WASHER	8
17	98-5303	FRAME - condenser (foamed)	1
18	33-3968	GASKET - evaporator door	1
19	33-3002	GASKET - door	1



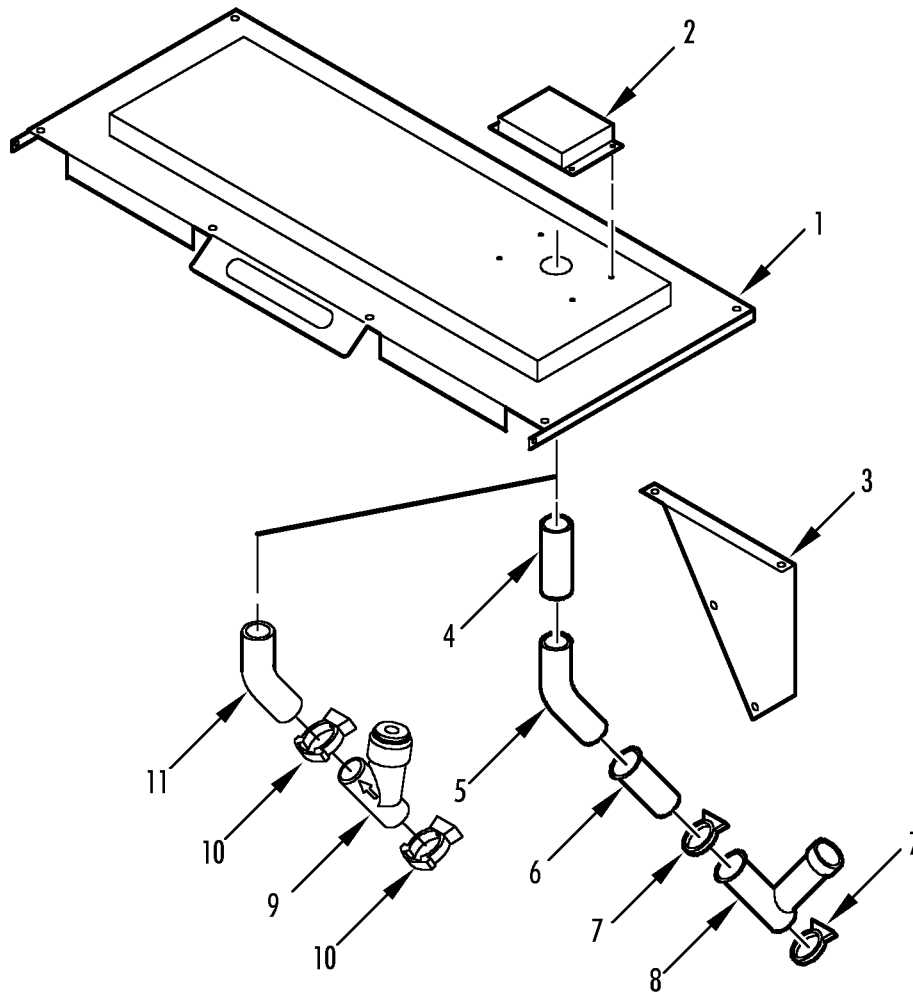


REF	PART#	DESCRIPTION	QTY
20	33-2983	GASKET - unit	1
21	91-9820	COVER - scroll compressor	1
	55-7341	SCREW - cover	3
	55-8904	FLATWASHER	3
	55-8953	WASHER (nylon)	3
22	91-8637	BRACKET - gauge (R134a)	1
	91-8639	BRACKET - gauge (R23)	1
	55-7341	SCREW - plate (20 mm)	2
	55-6993	SCREW - plate (25 mm)	1
	55-6988	FLATWASHER	3
	55-8953	WASHER	3
23	91-9039	HOOK - strap	1
	55-3065	CLAMP - hook	1
	55-7341	SCREW - clamp	1
24	509-937	STRAP - door	1
	55-9173	SCREW - strap	1
	55-7089	FLATWASHER	1
25	Not Used		
26	91-8694	NAMEPLATE - Warning, Fan Start	1



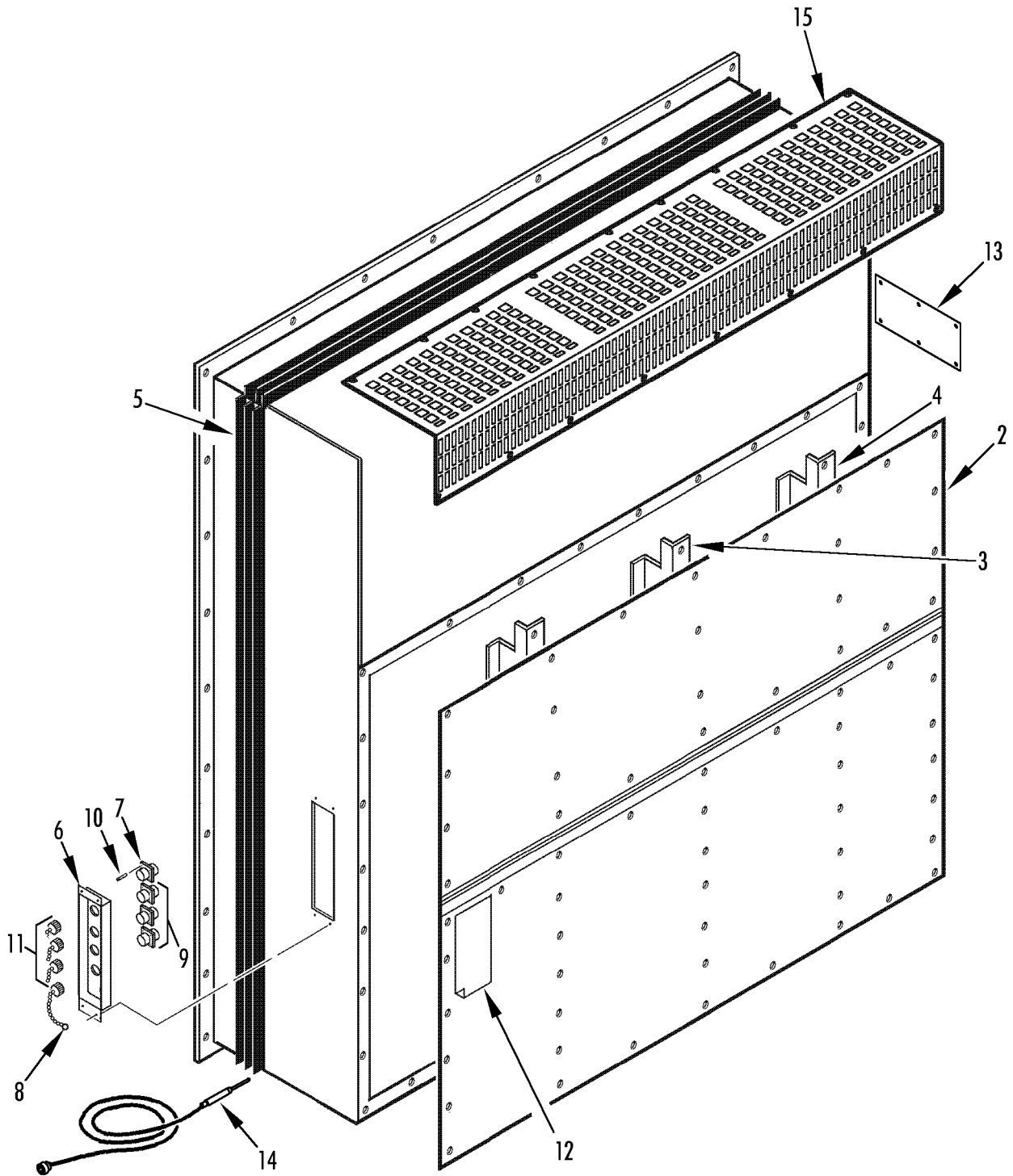


REF	PART#	DESCRIPTION	QTY
1	91-8098	RETAINER - probe	1
2	509-964	CAP - retainer (w/o hole)	1
3	91-8702	CAP - retainer (w/ hole)	1
4	33-2960	GASKET - retainer	1
5	91-9754	POCKET - sensor	1
6	55-6409	CONNECTOR - sensor	1
7	91-9754	POCKET - sensor	2



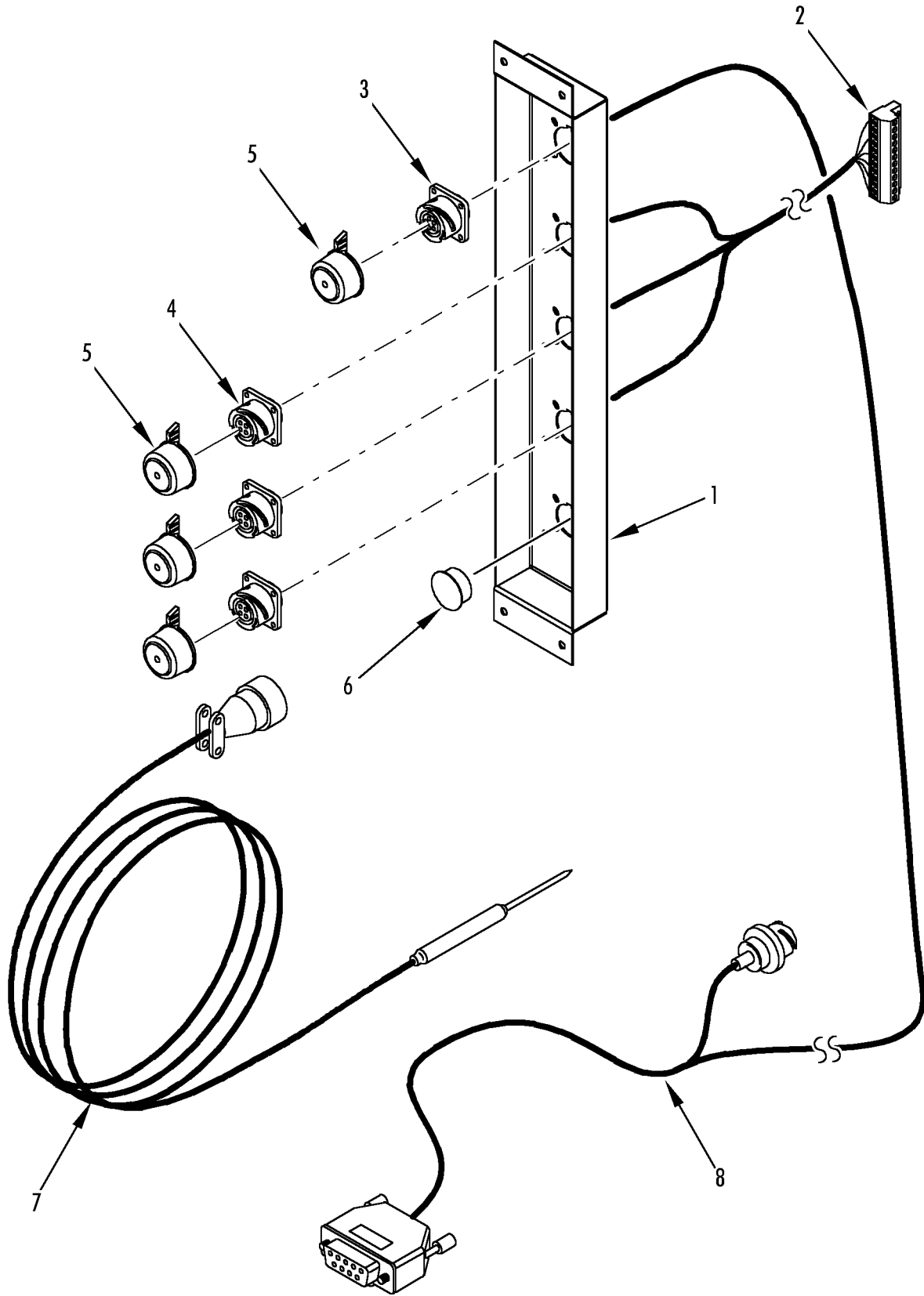


REF	PART#	DESCRIPTION	QTY
1	509-1784	DOOR - heat section	1
2	91-9821	BOX - ventilation	1
	55-9055	RIVET - box	4
3	91-9822	BRACKET - vacuum valve	1
	55-8910	SCREW - bracket	2
	55-9444	WASHER - insulating (nylon)	2
	55-8893	FLATWASHER	2
4	91-9823	PIPE - pvc (106 mm x 40 mm dia)	1
5	91-9824	ANGLE (45 deg x 40 mm dia)	1
6	91-9825	PIPE - pvc (93 mm x 40 mm dia)	1
7	91-9826	HOLDER - pipe (40 mm dia)	2
	55-9173	SCREW - holder	2
	55-9217	CAP - tube	2
8	509-1785	VALVE - vacuum relief (40 mm dia)	1
9	91-9827	VALVE - vacuum (63 mm dia)	1
10	91-9828	HOLDER - pipe (63 mm dia)	2
	55-7868	SCREW - holder	2
	55-7033	FLATWASHER	2
	55-7034	NUT	2
11	91-9829	PIPE - door (63 mm dia)	1



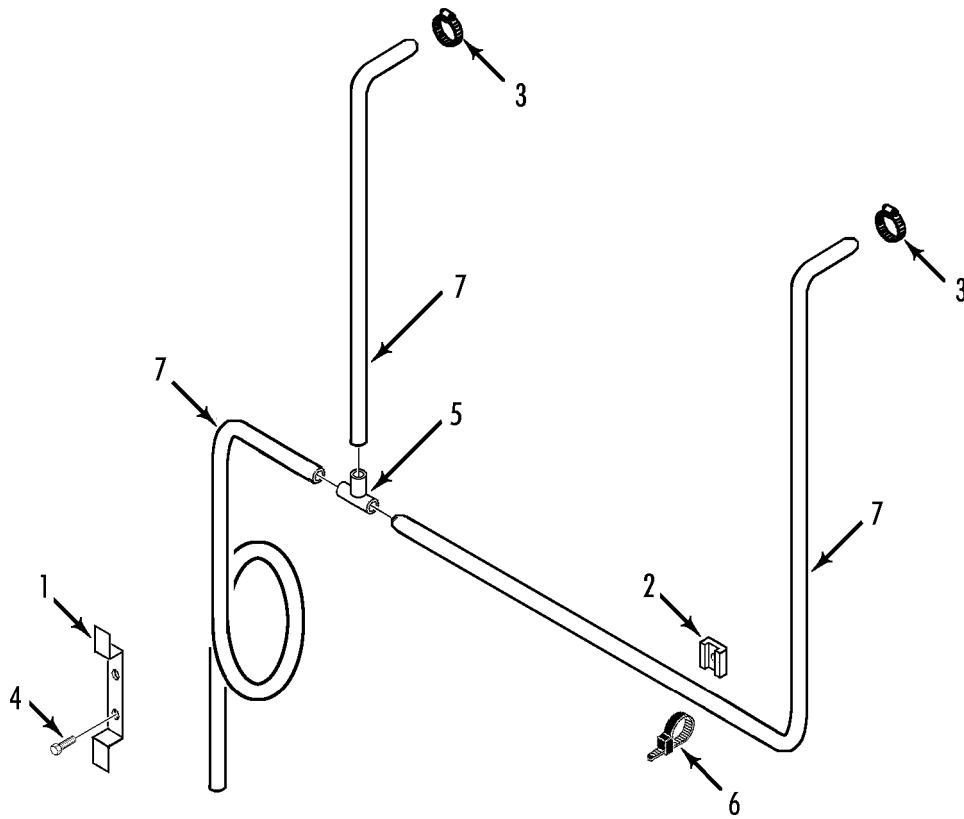


REF	PART#	DESCRIPTION	QTY
1	91-8258	PLATE - rear (bottom)	1
	55-9211	RIVET - plate	36
2	98-5335	PLATE - rear (top)	1
	55-9166	SCREW	26
	55-9444	WASHER - insulating (nylon)	26
3	509-1777	CHANNEL - Z	1
4	91-8097	CHANNEL - Z	2
	55-9055	RIVET - channel	21
5	33-2983	GASKET - unit	1
6	91-8645	PANEL - USDA receptacle	1
	55-9055	RIVET - panel	4
7	41-3586	RECEPTACLE - cannon (5 pin)	1
	41-2575	HARNESS - adapter (cannon bayonet connector)	1
	55-3272	SCREW - receptacle	16
	55-8410	FLATWASHER	16
8	99-3685	CHAIN - cap	5
9	504-1458	RECEPTACLE (4 pin)	3
10	44-9602	PIN - sealing	5
11	505-416	CAP - dust	4
12	91-8734	NAMEPLATE - USDA Connections	1
13	91-8208	COVER - plate	1
	55-2262	RIVET - plate	6
14	41-5405	SENSOR - PT100	2
15	98-6224	GRILLE - evaporator	1



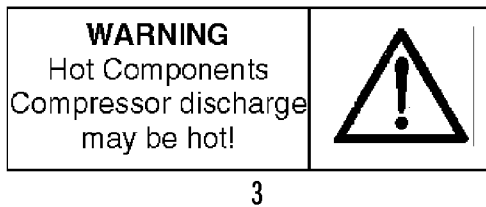
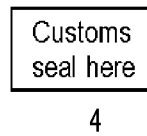
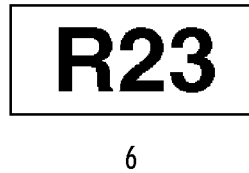
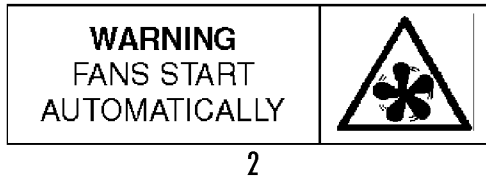
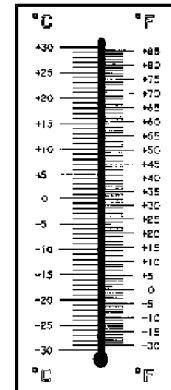
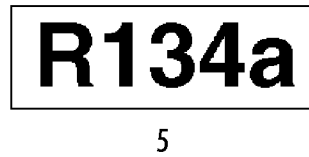


REF	PART#	DESCRIPTION	QTY
	41-3336	PANEL - USDA, assembly	1
1	91-9834	• PANEL - USDA receptacle	1
2	41-3585	• CONNECTOR (12 pin)	1
3	41-3586	• RECEPTACLE (5 pin, cannon, bayonet)	1
4	41-3587	• RECEPTACLE (4 pin, cannon, bayonet)	3
	55-9322	• RIVET - receptacle	16
5	41-3588	• CAP - receptacle	4
	55-3272	• RIVET - cap	4
6	92-206	• CAP - plug	1
	55-9211	RIVET - panel	4
7	41-5405	SENSOR - PT100 (4 pin, cannon, bayonet)	4
8	41-2853	CABLE & PLUG - retriever (cannon threaded)	1





REF	PART#	DESCRIPTION	QTY
1	91-8244	BRACKET - hose	1
2	99-3281	MOUNT - cable tie	5
	55-2260	RIVET - anchor	5
3	55-2686	CLAMP - hose	2
4	55-8891	SCREW - bracket	2
5	55-9208	CONNECTOR - T-hose	1
6	55-2330	BANDWRAP	6
7	11-8983	HOSE - flex	1



7



REF	PART#	DESCRIPTION	QTY
1	91-8475	NAMEPLATE - TK	1
2	91-8694	NAMEPLATE - Warning, Fan Start	1
3	91-8695	NAMEPLATE - Warning, Hot Components	1
4	509-1789	NAMEPLATE - Custom Seal Here	1
5	91-5459	NAMEPLATE - R134a	1
6	91-8644	NAMEPLATE - R23	1
7	509-1653	NAMEPLATE - Temperature	1

INDEX NUMERICAL BY PART NUMBER

102-796	12, 20, 22	41-3603	30	506-413	16
104-666	22	41-3605	32	506-414	12
104-677	6	41-3608	24	506-415	12
104-691	8, 22	41-4142	28, 30	506-416	12
11-2886	10	41-4300	18, 22	506-417	12
11-8983	46	41-4523	20	506-418	12
203-393	10, 16	41-5405	42, 44	506-419	12
203-506	28	41-5460	10	506-420	12
203-509	24	44-8340	8	506-421	12, 20
203-516	18	44-9602	42	506-423	10, 12, 16
22-1051	18	45-1791	22	506-431	12
22-1132	18	502-240	18	508-165	8
22-1161	18	503-119	26	509-1007	24
22-1186	16, 18	503-120	6	509-1153	18
22-398	18	503-230	18	509-1155	24
33-1015	20	503-278	18	509-1156	24
33-2223	18	504-1025	14	509-1174	24
33-2510	18	504-1228	28	509-1606	24
33-2805	20	504-1375	28	509-1609	32
33-2946	8	504-1418	10	509-1612	24
33-2960	38	504-1458	42	509-1653	48
33-2983	36, 42	504-1519	8, 22	509-1654	34
33-3002	34	504-1520	8, 22	509-1777	42
33-3007	10, 16, 20	504-1521	8, 22	509-1780	8
33-3043	6	504-1522	22	509-1781	22
33-3175	18	504-1526	32	509-1783	22
33-3215	8	504-1528	22	509-1784	34, 40
33-3513	18	504-1529	22	509-1785	40
33-367	6	504-250	28	509-1786	16
33-3838	8, 26	504-277	28	509-1789	34, 48
33-3968	34	504-381	24	509-755	34
33-727	20	504-514	24	509-937	36
33-981	16, 18	504-602	22	509-953	24
40-791	22	504-841	24	509-955	24
41-1976	22	504-842	24	509-964	38
41-2206	32	504-845	24	51-620	34
41-2485	20	504-865	32	55-1122	12
41-2486	26	504-900	32	55-1292	12
41-2489	22	504-970	24	55-1983	20
41-2490	22	504-977	10	55-2159	18
41-2575	42	505-181	30	55-2173	18
41-2716	18, 22	505-408	24	55-2260	46
41-2832	26	505-416	24, 42	55-2262	42
41-2835	28, 30	505-511	28, 30	55-2324	8
41-2853	24, 30, 44	505-565	32	55-2330	46
41-2953	6, 22	505-566	24	55-2686	46
41-3250	16, 18	505-569	24	55-2747	18
41-3276	24	505-570	24, 26	55-2864	34
41-3317	32	505-583	28	55-3065	36
41-3335	26, 30	505-585	28	55-3191	10
41-3336	44	505-586	28	55-3272	24, 42, 44
41-3338	12	506-111	16, 20	55-3310	10, 12
41-3585	44	506-160	14	55-3346	12
41-3586	42, 44	506-161	18	55-3490	18
41-3587	44	506-165	18	55-3682	14
41-3588	44	506-363	16, 20	55-4390	10
41-3595	24	506-364	10, 16	55-5025	18
41-3599	24	506-369	10	55-5257	18, 24
41-3602	28, 30	506-370	10	55-5616	14

INDEX NUMERICAL BY PART NUMBER

55-6409	38	55-9392	28	67-1591	14
55-6988	6, 34, 36	55-9395	30	77-1401	8
55-6993	6, 8, 36	55-9444	28, 30, 40, 42	77-1498	8
55-6994	34	61-1090	10	78-1167	6
55-6995	34	61-2230	18	8102-743	10, 16, 18, 22
55-7008	32, 34	66-1845	18	845-1898	28, 30
55-7033	28, 30, 40	66-1916	12	845-1904	28
55-7034	30, 40	66-2457	18	845-1909	28, 30
55-7035	6	66-3942	12	845-2834	24
55-7042	24, 26	66-6607	18	91-5459	48
55-7060	20	66-6610	18	91-8097	42
55-7089	36	66-7182	18	91-8098	38
55-7172	34	66-7183	18	91-8108	34
55-7341	34, 36	66-7392	20	91-8134	34
55-7342	6, 8	66-8467	10	91-8140	22
55-7347	20	66-8811	10, 16	91-8195	34
55-7354	34	66-9015	10	91-8199	34
55-7357	34	66-9078	12	91-8208	42
55-7360	18	66-9108	10	91-8244	46
55-7372	32	66-9109	14	91-8256	34
55-7407	30	66-9110	14	91-8258	42
55-7868	40	66-9111	14	91-8466	8
55-8410	42	66-9115	12	91-8475	48
55-8875	22, 24, 26	66-9116	10	91-8635	16
55-8877	24, 26, 34	66-9117	10	91-8636	16
55-8879	34	66-9118	10	91-8637	16, 36
55-8882	34	66-9119	10	91-8638	20
55-8883	34	66-9120	14	91-8639	20, 36
55-8891	8, 22, 46	66-9123	10	91-8644	48
55-8893	6, 22, 24, 26, 34, 40	66-9124	10	91-8645	42
55-8903	8	66-9125	10	91-8694	36, 48
55-8904	6, 8, 34, 36	66-9126	10	91-8695	48
55-8907	6, 8, 24	66-9149	18	91-8702	38
55-8908	6, 8, 24	66-9150	16	91-8734	42
55-8910	40	66-9167	10, 22	91-8737	32
55-8911	20	66-9377	10, 18	91-9039	36
55-8912	20	66-9410	12	91-9040	34
55-8914	22	66-9842	12	91-9041	34
55-8919	28, 30	66-9877	12	91-9272	24
55-8921	26	66-9878	12	91-9273	32
55-8933	34	66-9879	12	91-9380	28, 30
55-8953	36	66-9880	12	91-9381	28, 30
55-8992	20	66-9881	14	91-9382	28, 30
55-9012	20	66-9882	14	91-9383	28, 30
55-9037	18	66-9883	14	91-9504	34
55-9054	6, 34	66-9884	14	91-9679	16
55-9055	40, 42	66-9885	12	91-9680	16
55-9058	20	66-9886	12	91-9681	16
55-9166	24, 32, 42	66-9887	12	91-9682	16
55-9173	36, 40	66-9889	14	91-9754	38
55-9208	46	66-9890	16, 20	91-9819	20
55-9211	24, 42, 44	66-9891	20	91-9820	36
55-9217	40	66-9892	20	91-9821	40
55-9305	14	66-9900	10	91-9822	40
55-9320	20	67-1505	14	91-9823	40
55-9321	20	67-1506	14	91-9824	40
55-9322	44	67-1507	10, 16	91-9825	40
55-9380	6, 8, 34	67-1589	10, 12	91-9826	40
55-9382	30	67-1590	12, 20	91-9827	40

INDEX NUMERICAL BY PART NUMBER

91-9828	40
91-9829	40
91-9834	44
92-1682	18
92-1928	32
92-206	44
92-237	24
92-239	24
92-2995	34
92-860	24
98-5303	34
98-5335	42
98-5454	26
98-5925	6, 34
98-6224	42
99-3281	46
99-3685	42
99-4931	8

INDEX NUMERICAL BY PART NUMBER

INDEX ALPHABETICAL BY DESCRIPTION

A

ADAPTER - discharge **18**
ADAPTER - discharge valve **16**
ADAPTER - expansion valve **12**
ADAPTER - push-on **28, 30**
ADAPTER - service **18**
ANGLE **40**

B

BANDWRAP **46**
BATTERY **24**
BATTERY - lithium **28**
BEARING - opposite end **8**
BEARING - shaft end **8**
BLOCK - ground **32**
BLOCK - terminal **24, 32**
BOARD - relay **24**
BOOT - circuit **24**
BOOT - terminal **24**
BOX - control **22, 26**
BOX - junction **18**
BOX - ventilation **40**
BRACKET **16, 24**
BRACKET - diagram **24**
BRACKET - evaporator motor **8**
BRACKET - frame **34**
BRACKET - gauge **20, 36**
BRACKET - heater **22**
BRACKET - hose **46**
BRACKET - receiver tank **16**
BRACKET - vacuum valve **40**
BREAKER - circuit **24, 32**
BUSHING **12**

C

CABLE - battery **26, 30**
CABLE - compressor power **18**
CABLE - connecting **28, 30**
CABLE - connection **28**
CABLE - multi **28**
CABLE - power **22**
CABLE - psion retriever **28**
CABLE & PLUG - retriever **24, 30, 44**
CAP - adapter **18**
CAP - discharge valve **18**
CAP - dust **42**
CAP - fitting **18**
CAP - flare **20**
CAP - plug **24, 44**
CAP - receptacle **44**
CAP - retainer **38**
CAP - suction valve **18**
CAP - tube **40**
CHAIN - cap **42**
CHANNEL - Z **42**
CLAMP - hook **36**
CLAMP - hose **46**
CLIP - retaining **24**
COIL **10**

COIL - condenser **10, 12**
COIL - evaporator **14**
COLLAR **18**
COMPRESSOR **10, 16, 18, 22**
COMPRESSOR - scroll **12, 20, 22**
CONNECTOR **44**
CONNECTOR - plug **26**
CONNECTOR - sensor **38**
CONNECTOR - T-hose **46**
CONTACT - auxiliary **32**
CONTACTOR **32**
CONTROLLER **28, 30**
COUPLING **18**
COVER - plate **42**
COVER - scroll compressor **36**

D

DATALOGGER - mP-C 2000 **28**
DOOR - control box **28, 30**
DOOR - controller **24**
DOOR - evaporator **34**
DOOR - heat section **40**
DOOR - heater section **34**
DRIER **12, 20**

E

ELBOW **10, 12**
ELBOW - evaporator to KVR **14**
EXTRUSION **6**

F

FAN - condenser **6**
FAN - evaporator **8**
FILTER **12**
FILTER - dehydrator **10**
FITTING - gland **24**
FITTING - harness **18**
FITTING - service **18**
FLATWASHER **6, 8, 18, 20, 24, 34, 36, 40, 42**
FRAME - condenser **34**
FUSE **24**
FUSIBLE PLUG **10**

G

GASKET **6**
GASKET - cover **26**
GASKET - cylinder head **18**
GASKET - discharge **18**
GASKET - discharge & suction **18**
GASKET - door **34**
GASKET - evaporator door **34**
GASKET - gauge **16, 20**
GASKET - retainer **38**
GASKET - sight glass **18, 20**
GASKET - suction **18**
GASKET - unit **36, 42**
GASKET - valve **16, 18, 20**
GASKET - valve plate **18**

GAUGE 20

GAUGE - pressure **16**
GRILLE - condenser **34**
GRILLE - evaporator **42**
GRIP - cable **6**
GRIP - harness & sensor **8**
GROMMET **6, 8, 26**

H

HANGER - filter **10**
HARNESS **8, 26**
HARNESS - adapter **42**
HARNESS - compressor **22**
HARNESS - condenser fan **6, 22**
HARNESS - defrost switch **22**
HARNESS - evaporator motor **22**
HARNESS - heater **22**
HEAT EXCHANGER **10, 12, 16**
HEATER **22**
HINGE **34**
HINGE - cover **24**
HINGE - door **28, 30**
HINGE - evap door **34**
HOLDER - pipe **40**
HOOK - strap **36**
HOSE - flex **46**

I

INSULATION **20**
INSULATION - exchanger **16**
INSULATOR **24, 28**
INSULATOR - hinge **30**
INSULATOR - latch **34**
INTERLOCK **32**

K

KEEPER - door latch **34**
KEY - fan **8**
KEYPAD **28, 30**
KIT - reed suction **18**
KIT - repair **10**
KIT - sensor **22**
KIT - valve plate **18**
KNOB **34**

L

LABEL **24**
LABEL - compressor oil **18**
LABEL - high voltage **24**
LABEL - on/off **24**
LABEL - relay **24**
LATCH - door **34**
LOCKNUT **6**
LOCKWASHER **6, 8, 18, 20, 24, 32**

M

MODEM - RMM **28, 30**
MOTOR - condenser fan **6, 22**
MOTOR - evaporator **8**

INDEX ALPHABETICAL BY DESCRIPTION

MOTOR - evaporator fan **22**
MOUNT - cable tie **46**

N

NAMEPLATE - arrow **8**
NAMEPLATE - controller warning **28, 30**
NAMEPLATE - Custom Seal Here **48**
NAMEPLATE - phase select **28, 30**
NAMEPLATE - R134a **48**
NAMEPLATE - R23 **48**
NAMEPLATE - Temperature **48**
NAMEPLATE - TK **48**
NAMEPLATE - USDA Connections **42**
NAMEPLATE - Warning, Fan Start **36, 48**
NAMEPLATE - Warning, Hot Components **48**
NUT **6, 8, 18, 20, 24, 26, 28, 30, 32, 34, 40**
NUT - controller **28**
NUT - grip **8**
NUT - receiver tank **20**

O

OIL - compressor **18**
ORIFICE **12**
ORIFICE - condenser fan **6**
O-RING **10, 16**
O-RING - relief valve **20**
O-RING - valve **20**

P

PANEL - USDA receptacle **42, 44**
PANEL - USDA, assembly **44**
PIN - hinge **34**
PIN - sealing **42**
PIPE - door **40**
PIPE - gauge **16, 20**
PIPE - pvc **40**
PLATE - assembly **26**
PLATE - bottom **32**
PLATE - cable storage **34**
PLATE - rear **42**
PLUG - fusible **16**
PLUG - power **22**
PLUG - seal **24, 26**
POCKET - sensor **18, 38**
PROBE - high temperature **18**

R

RAIL - din **32**
RAIN - din **32**
RECEPTACLE **42, 44**
RECEPTACLE - cannon **42**
REDUCER **10, 12, 14**
RELAY - power **24**
RETAINER - probe **38**
RETAINER - screw **28, 30**

RIVET - anchor **46**
RIVET - box **40**
RIVET - bracket **24**
RIVET - cap **44**
RIVET - channel **42**
RIVET - hinge **34**
RIVET - latch **34**
RIVET - panel **42, 44**
RIVET - plate **42**
RIVET - plug **24**
RIVET - receptacle **44**

S

SCREEN - heat exchanger **16**
SCREW **32, 42**
SCREW - adapter **18**
SCREW - battery **26**
SCREW - board **24**
SCREW - bracket **8, 22, 34, 40, 46**
SCREW - clamp **36**
SCREW - collar **18**
SCREW - compressor **18, 20**
SCREW - control box **22, 26**
SCREW - cover **36**
SCREW - door **28, 30, 34**
SCREW - grille **34**
SCREW - guard **6**
SCREW - hinge **24, 28, 30, 34**
SCREW - holder **40**
SCREW - keeper **34**
SCREW - motor **6, 8**
SCREW - plate **34, 36**
SCREW - plate to box **32**
SCREW - receptacle **42**
SCREW - section **8**
SCREW - strap **36**
SCREW - transformer **32**
SEAL - door **34**
SEALER - thread **10, 16**
SENSOR - compressor **22**
SENSOR - defrost, return & supply **22**
SENSOR - pocket **10**
SENSOR - PT100 **42, 44**
SHROUD - evaporator **8**
SIGHT GLASS - moisture **10, 16**
SIGHT GLASS - oil **18**
SIGHT GLASS - receiver **20**
SPACER - compressor **20**
SPRING **34**
SPRING - heater **22**
STRAP - door **36**
SWITCH - hpco **16, 18, 20**
SWITCH - lpco **12**
SWITCH - temperature **22**
SWITCH - unit on/off **24**

T

TANK - receiver **10, 12, 14, 16, 20**
TEE **14**

TERMINAL **8**
TERMINAL - spade **22**
TERMINAL BLOCK **24**
TRANSFORMER **32**
TUBE **12, 14**
TUBE - bypass **10, 12**
TUBE - check valve **10**
TUBE - condenser coil **12**
TUBE - condenser to heat exchanger **12**
TUBE - cpr valve **14**
TUBE - discharge **10**
TUBE - drier **10**
TUBE - drier to solenoid **10**
TUBE - expansion valve **12**
TUBE - expansion valve to heat expansion **10**
TUBE - heat exchanger **12**
TUBE - rear to coil **10**
TUBE - receiver tank to heat exchanger **12**
TUBE - solenoid to expansion valve **10**
TUBE - suction **10, 14**
TUBE - to tank receiver **14**

V

VALVE **10, 12, 20**
VALVE - ball **10**
VALVE - check **10**
VALVE - discharge **12, 16, 18**
VALVE - discharge pressure regulator **14**
VALVE - expansion **10, 12**
VALVE - relief **20**
VALVE - rotalock **10**
VALVE - solenoid **10, 22**
VALVE - suction **12, 18**
VALVE - suction pressure regulator **14**
VALVE - vacuum **40**
VALVE - vacuum relief **40**

W

WASHER **6, 22, 24, 26, 28, 30, 34, 36**
WASHER - insulating **40, 42**
WASHER - vibration **20**
WIRING - compressor **20**