



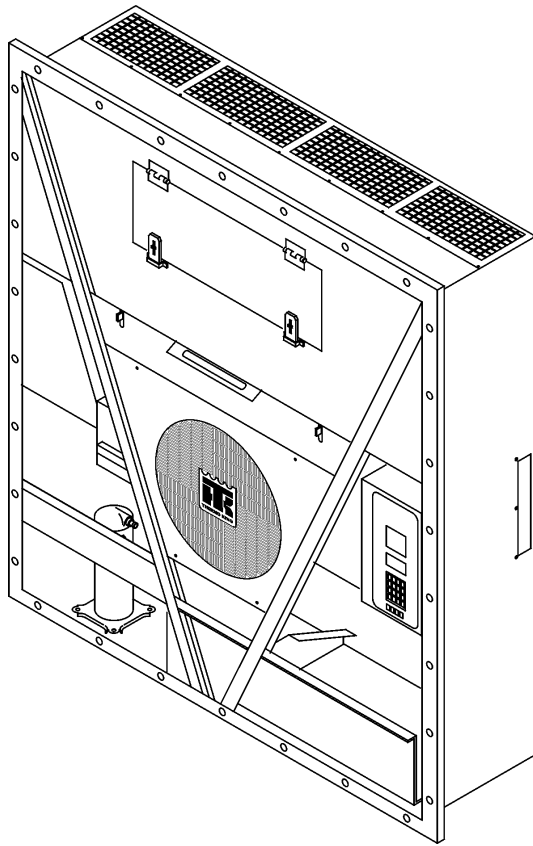
Parts Manual

MAGNUM SL mP-4000

TK 54841-4-PM (Rev. 1.1)

MAGNUM SL mP-4000

TK 54841-1.1



Printed (March 5, 2012)

Copyright © 2010 - Thermo King Corp. - Minneapolis, MN U.S.A.
Electronically printed in U.S.A.

General Information

Tables of Contents

This Parts Manual contains a numerical table of contents listing each assembly name, its associated Grid number and page number. The numerical table of contents is arranged numerically by Grid number. There are references in a parts list referring to other Grid numbers, the numerical table of contents is arranged to facilitate finding the referenced illustrations. At the rear of this parts manual are two indexes, a numerical and alphabetical. The indexes contain all of the part numbers and descriptions which appear in this manual.

Assemblies and Subassemblies

When parts are indented in the description list, they are preceded with a bullet (•). This indicates that the part(s) is available separately or included in an assembly.

GRID NO. 67D6 SWITCH PANEL ASSEMBLY

REF	PART#	DESCRIPTION	QTY
	45-1239	PANEL - assy, switch	1
1	99-1960	• PANEL	1
	99-6280	• • NAMEPLATE - panel	1
2	33-743	• GASKET	1

For example: the switch panel nameplate (99-6280) is available separately, available as part of the switch panel (99-1960) and with the panel assembly (45-1239).

ABBREVIATIONS

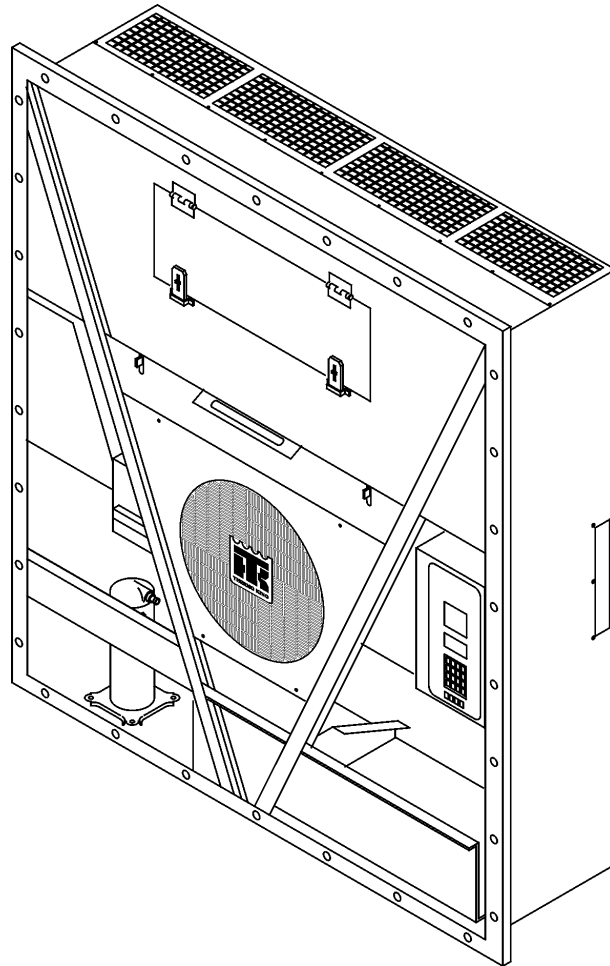
The following abbreviations appear in parts manuals

A AC alternating current	E (continued)	O os oversized
A/R as required	evap. evaporator	od outside diameter
accum accumulator	exch exchanger	P pcb printed circuit board
adj adjusting	exp expansion	pkg package
al aluminum	ext external	ph phase
alt. alternator	F F Fahrenheit	pos positive
A or amp ampere	fill fillister	psi pounds per square inch
assy assembly	fi fuel injection	
B bd board	fl flare	R rad radiator
brg bearing	fpt female pipe thread	rcvr receiver
brkr breaker	ft feet	ref reference
brkt bracket	ftg fitting	reg regulator
C C Celsius	H hex hexagon	req required
cw clockwise	hh hexagon head	rpm revolutions per minute
ccw counter-clockwise	hd head	S sec second
cam camshaft	hp horsepower	sld solder
compr compressor	hsg housing	soc hd. socket head
cond. condenser	I id inside diameter	sol solenoid
conn. connecting, connector	in inch (2.54 centimeters)	spl special
cyl cylinder	incl includes	sq square
D def defrost	inj injection	ss stainless steel
deg degree	int internal	std standard
dehyd. dehydrator	int th internal tooth	stl steel
dia diameter	L liq liquid	suct suction
DC direct current	lg long	sw switch
disch discharge	M mm millimeter	T term terminal
diff differential	mpt male pipe thread	temp temperature
E EMI Extended	mod modulating	thk thick
. Maintenance Interval	N neg negative	U us undersize
EEC European Economic Community	No. number	V vib vibrasorber
eng engine	NS not supplied	W W watt
	NSS not sold separately	w/ with
		w/o without

MAGNUM SL mP-4000

Contents

Name	Grid	Page
MAGNUM SL mP-4000 REFERENCE SHEET	.15U78	.3
CONDENSER COMPONENTS	.180E5	.25
DEFROST DRAIN	.189C4	.37
DOWNLOAD CABLES	.226E2	.23
CONDENSER FAN GROUP	.235E8	.5
ELECTRICAL COMPONENTS	.235G1	.15
CONTROL BOX (mP-4000)	.235G2	.17
REFRIGERATION COMPONENTS (SERVICE VALVES)	.247C0	.9
EVAPORATOR GROUP (TWO FANS, SL-40)	.247C5	.7
AIR VENT	.247C7	.29
EVAPORATOR PANELS	.247C8	.33
USDA DOWNLOAD PANEL	.247C9	.35
EVAPORATOR HEATER GROUP	.259A4	.21
AIR VENT (AFAM + mP-4000)	.259C3	.31
NAMEPLATES	.259C4	.39
COMPRESSOR GROUP (SERVICE VALVES)	.259C5	.13
CONTROL BOX DOOR (mP-4000)	.259C6	.19



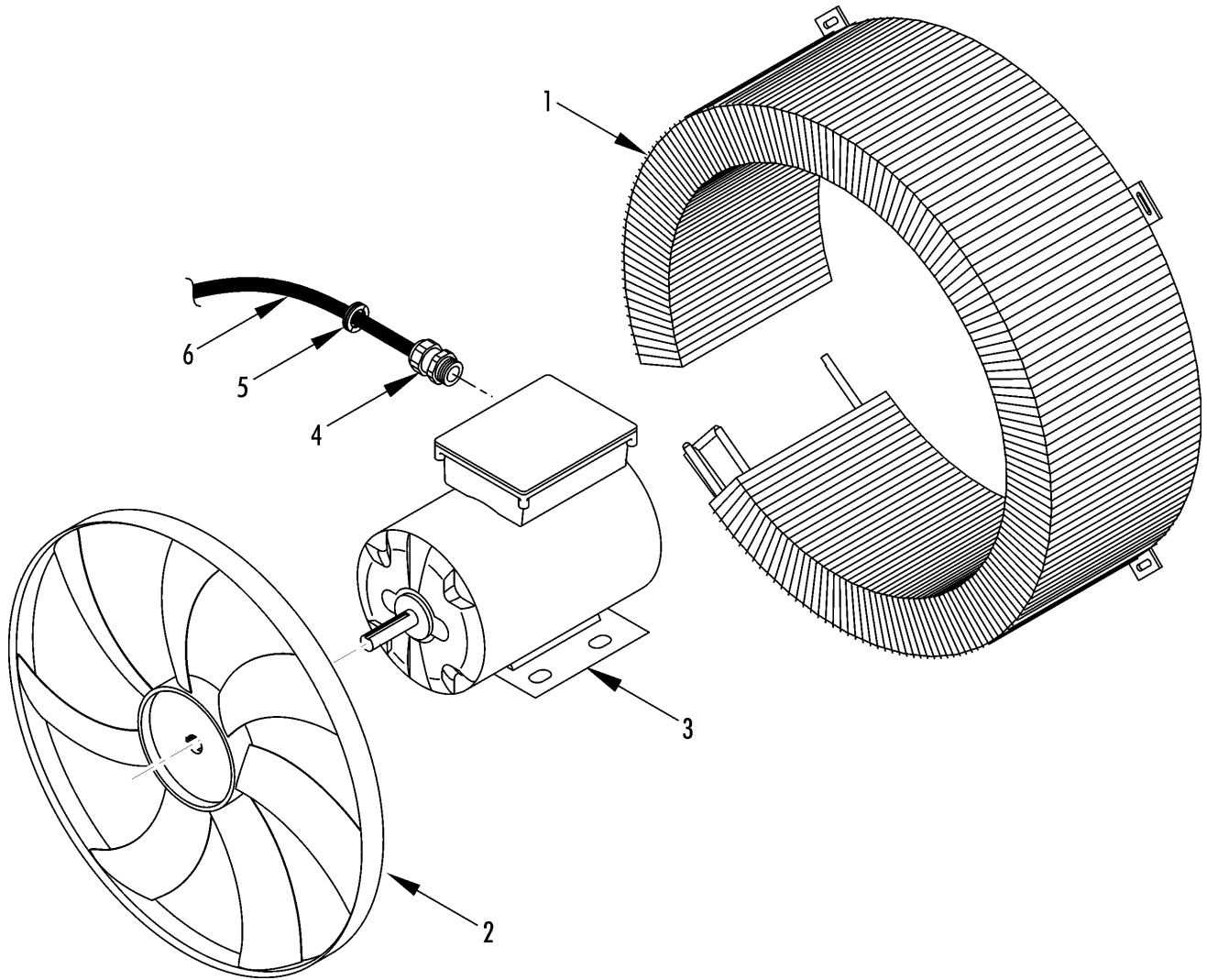
Revised
1/2/12

MAGNUM SL mP-4000 REFERENCE SHEET



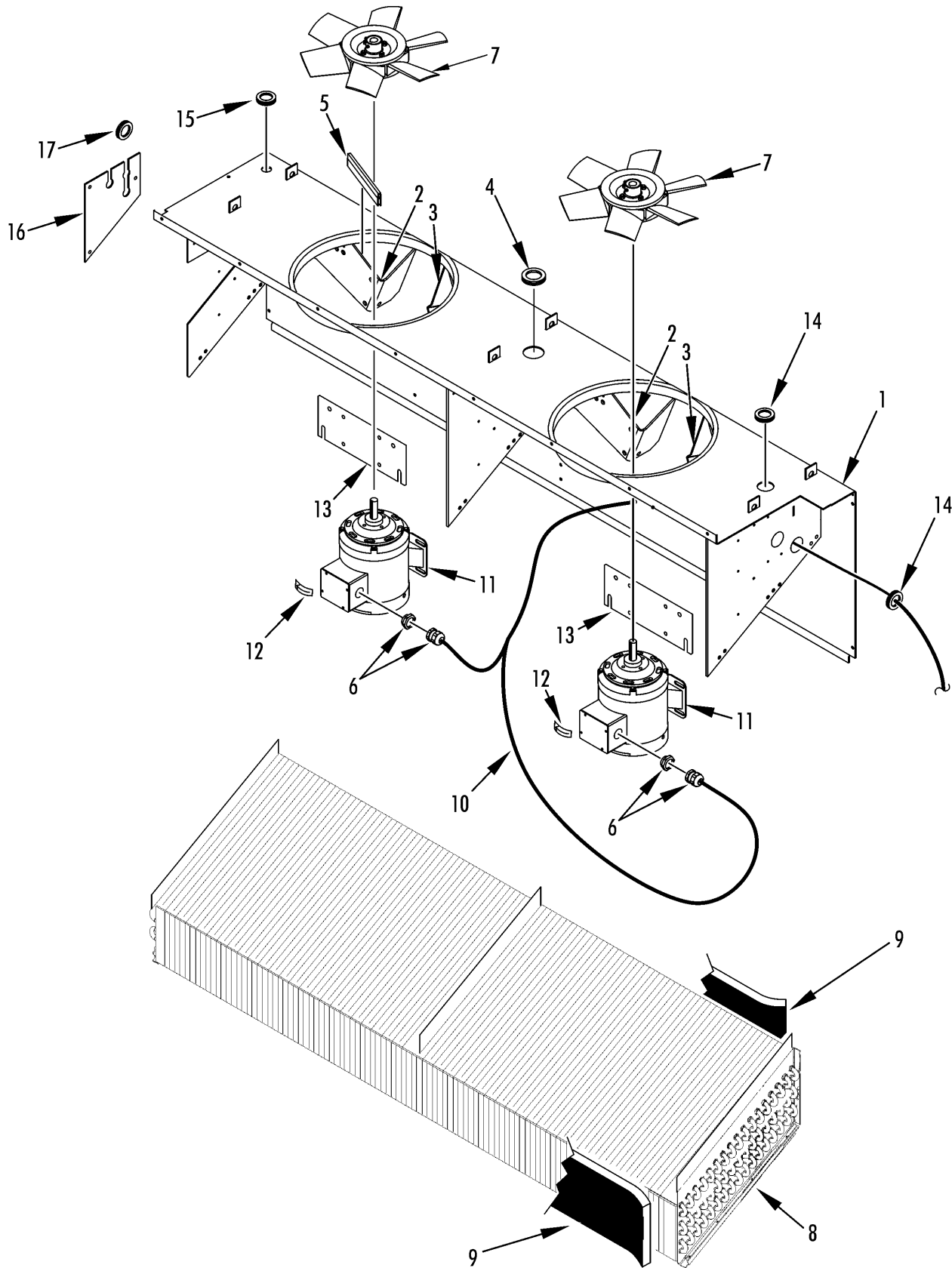
15U78

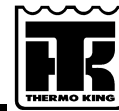
B/M	DESCRIPTION	Date
098211	MAGNUM SL 211	1/12
098209	MAGNUM SL PLUS-209	1/12



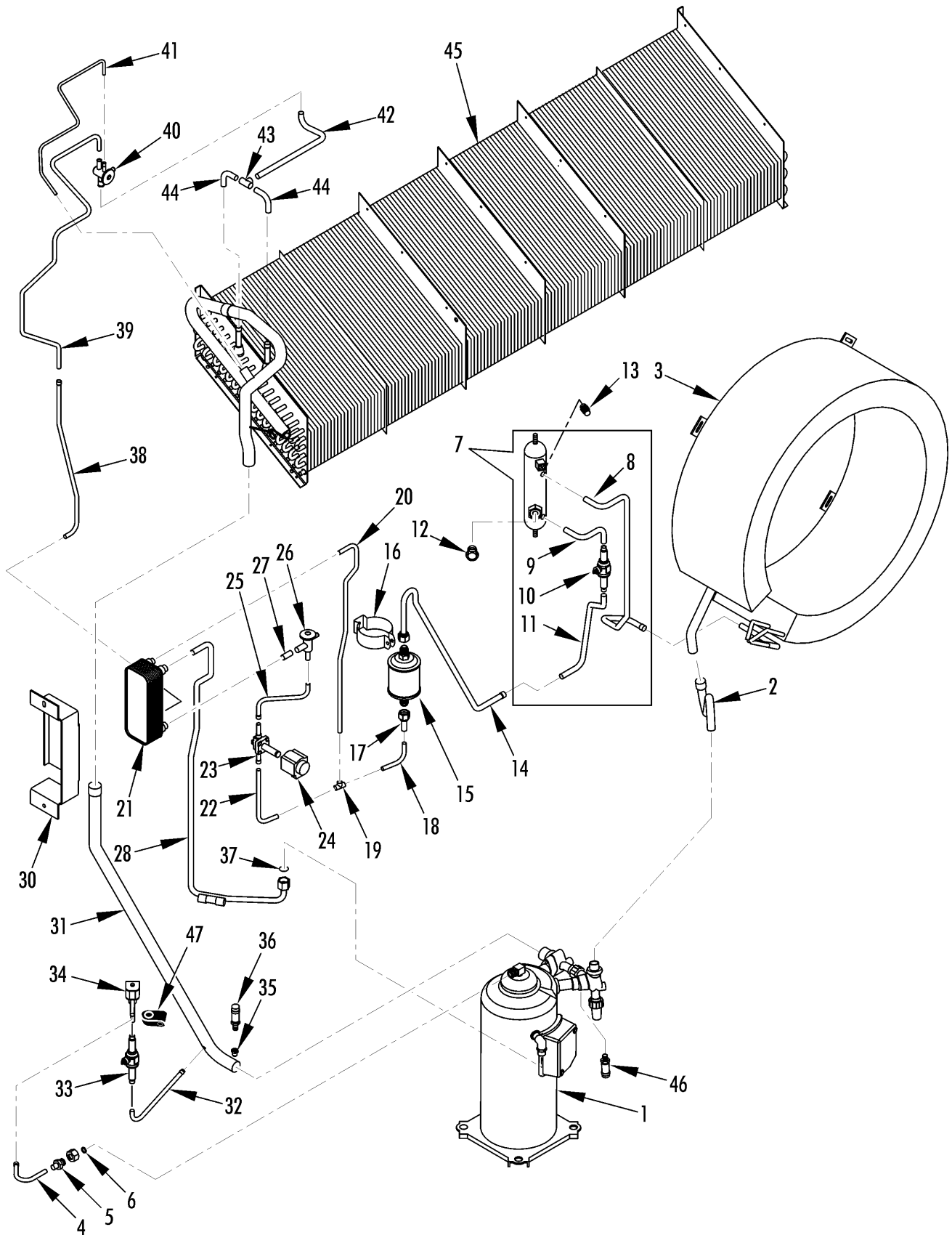


REF	PART#	DESCRIPTION	QTY
1	60-285	COIL - condenser	1
	67-1589	COIL - condenser (deep freeze units only)	1
	33-2950	GASKET (10 x 15 mm)	A/R
	51-1442	SCREW - coil	7
	51-1444	FLATWASHER	7
	55-9054	WASHER (nylon)	7
2	78-1684	FAN - condenser (21.6 in, 500 mm dia, 30 deg pitch, 8 blade)	1
3	104-759	MOTOR - condenser fan (0.75 hp)	1
	51-1443	SCREW - motor	4
	51-1444	FLATWASHER	8
	51-1429	LOCKWASHER	4
	51-1427	NUT	4
4	55-5900	GRIP - cable	1
5	33-367	GROMMET	1
6	41-2953	HARNESS - condenser fan	1



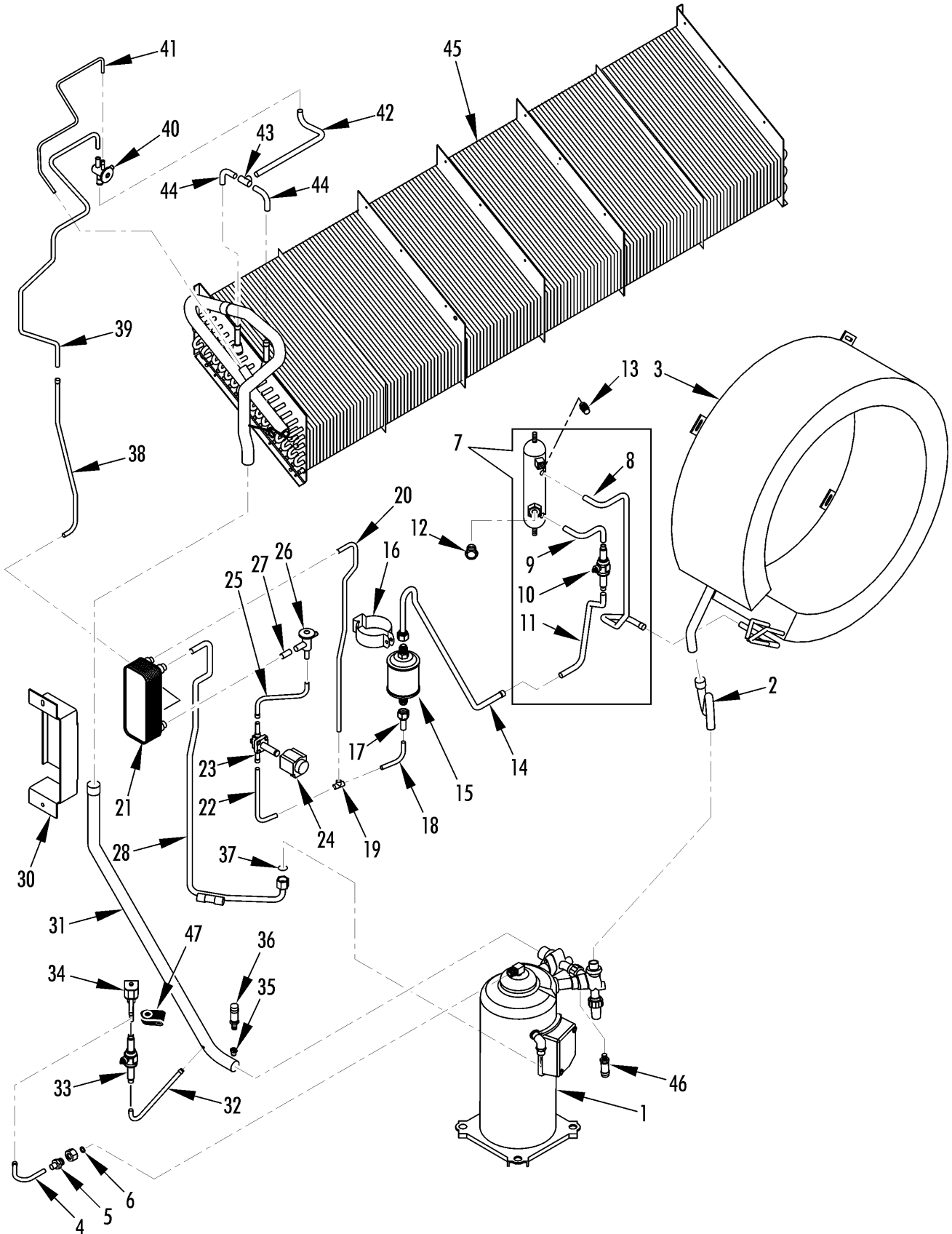


REF	PART#	DESCRIPTION	QTY
1	98-6562	HOUSING - evaporator	1
2	92-2788	• BRACKET (left)	2
3	92-2789	• BRACKET (right)	2
	55-9162	RIVET - shroud	10
4	33-3215	GROMMET (47 mm)	1
5	33-3044	TRIM - edge guard	A/R
6	55-5900	CONNECTOR - harness & sensor	2
7	78-1349	FAN - evaporator (12 in dia, 305 mm dia, 30 deg pitch)	2
8	67-1921	COIL - evaporator (13.0/330 wide)	1
	51-1447	SCREW - coil	9
	55-9217	CAP - screw (thread cover)	9
9	91-9328	BLOCK - coil	2
10	41-3685	HARNESS - evaporator fan	1
11	104-691	MOTOR - fan	2
	51-1443	SCREW - motor	8
	55-7066	LOCKWASHER (external tooth)	2
	51-1429	LOCKWASHER	6
	51-1444	FLATWASHER	8
	51-1427	NUT	8
12	99-4931	NAMEPLATE - Arrow	1
13	91-8466	BRACKET - motor	2
	51-1443	SCREW - bracket	8
	51-1444	FLATWASHER	8
	51-1429	LOCKWASHER	8
	51-1428	NUT	8
14	33-2946	GROMMET (37 mm)	6
15	33-3838	GROMMET (22 mm)	1
16	92-2775	COVER - tube	1
	51-1422	SCREW - cover	3
	51-619	WASHER - insulator	3
	51-1441	FLATWASHER	3
17	33-367	GROMMET	3



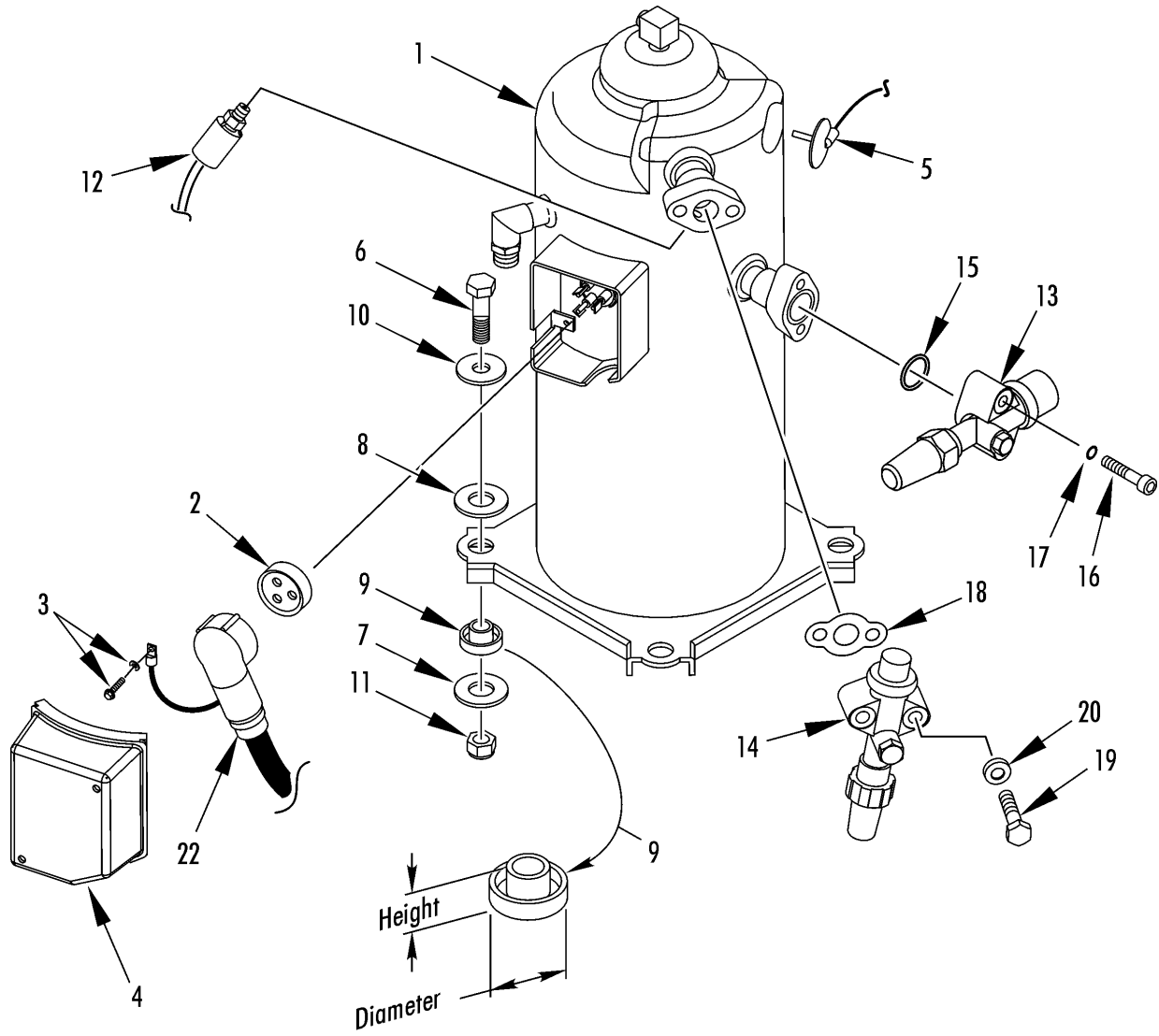


REF	PART#	DESCRIPTION	QTY
1	102-795	COMPRESSOR - scroll (see 180E1)	1
2	61-2477	TUBE - valve to coil	1
3	60-285	COIL - condenser	1
4	61-2467	TUBE - valve to coil	1
5	61-2162	ADAPTER - compressor	1
6	33-3912	SEAL - teflon fiber	1
7	67-2542	TANK - receiver	1
8	61-2238	• TUBE - receiver to dehydrator	1
9	61-5333	• TUBE - receiver to valve	1
10	61-3525	• VALVE - ball	1
11	61-5334	• TUBE - valve to joint	1
12	61-5335	PLUG - sight glass hole	1
	33-1162	O-RING - plug	1
13	506-364	PLUG - fusible	1
	51-273	NUT - receiver tank	2
	55-9027	WASHER - insulating	4
14	61-2475	TUBE - receiver to dehydrator	1
	55-302	NUT - adapter	1
15	61-786	DEHYDRATOR	1
16	51-1871	CLAMP - dehydrator (metal)	1
	92-9520	BRACKET - dehydrator (nylon)	1
	51-1442	SCREW - clamp	1
	51-1441	FLATWASHER	1
	51-1425	NUT - clamp	1
	55-9054	WASHER - insulating	1
	51-1442	SCREW - dehydrator	1
	51-1464	FLATWASHER	2
17	61-3506	TUBE - filter	1
	55-302	NUT - adapter	1
18	61-3503	TUBE - filter to tee	1
19	55-3251	TEE	1
20	61-2471	TUBE - tee to exchanger	1
21	67-1889	HEAT EXCHANGER - economizer	1
	92-3547	INSULATION - heat exchanger	1
22	61-2472	TUBE - tee to valve	1
	91-758	CLAMP - tube	1
	51-1442	SCREW - clamp	1
	51-1441	FLATWASHER	2
	92-2229	SPACER	1
23	61-2470	VALVE - vapor injection	1
24	41-5460	COIL - valve	1
25	61-2469	TUBE - valve to expansion	1



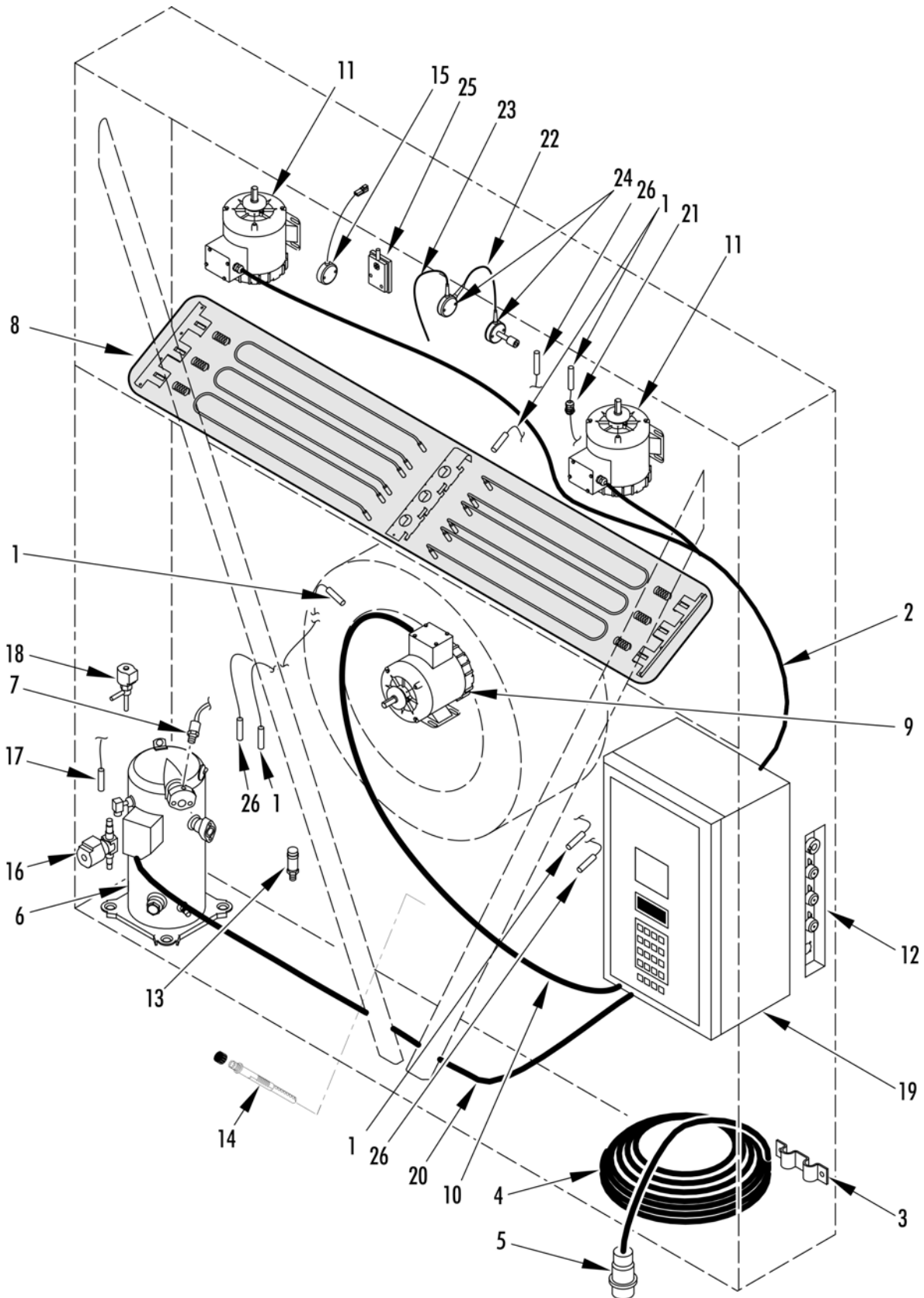


REF	PART#	DESCRIPTION	QTY
26	66-9906	VALVE - expansion (economizer)	1
27	61-1847	TUBE - expansion valve to exchanger	1
28	61-2474	TUBE - liquid injection	1
	55-8951	SHOULDER	1
	55-8950	NUT - o-ring seal	1
	33-4499	INSULATION - tube	A/R
	91-1800	CLAMP - tube	2
	51-1442	SCREW - clamp	1
	51-1425	NUT	1
29	61-2476	TUBE - expansion valve bulb	1
30	92-3391	BRACKET - heat exchanger	1
	92-3550	INSULATION - mylar	1
31	61-3502	TUBE - suction	1
	33-4500	INSULATION - tube (42.1 in lg)	A/R
32	61-2466	TUBE - suction to ball valve	1
33	61-2465	VALVE - ball	1
34	61-2057	VALVE (PWM)	1
	41-7937	• COIL (only)	1
35	66-9842	VALVE - flare	1
36	41-6150	TRANSDUCER - suction (200 psi)	1
37	33-566	O-RING	1
38	61-2468	TUBE - heat exchanger to evaporator	1
	33-4501	INSULATION - tube (14.1 in lg)	A/R
39	61-2050	TUBE - exchanger to coil (#2)	1
40	61-443	VALVE - expansion	1
41	61-2048	TUBE - equalizer	1
42	61-2049	TUBE - expansion valve to tee	1
43	55-2296	TEE	1
44	61-2051	TUBE - tee to distributor	1
45	67-1921	COIL - evaporator (13.0/330 wide, MAGNUM SL-40)	1
46	41-4004	SWITCH - hpco	1
47	91-758	CLAMP - tube	1
	51-1477	SCREW - clamp	1
	92-2229	SPACER	1
	51-1464	FLATWASHER (large)	1
	51-1441	FLATWASHER	1
	55-9054	WASHER - insulator	1



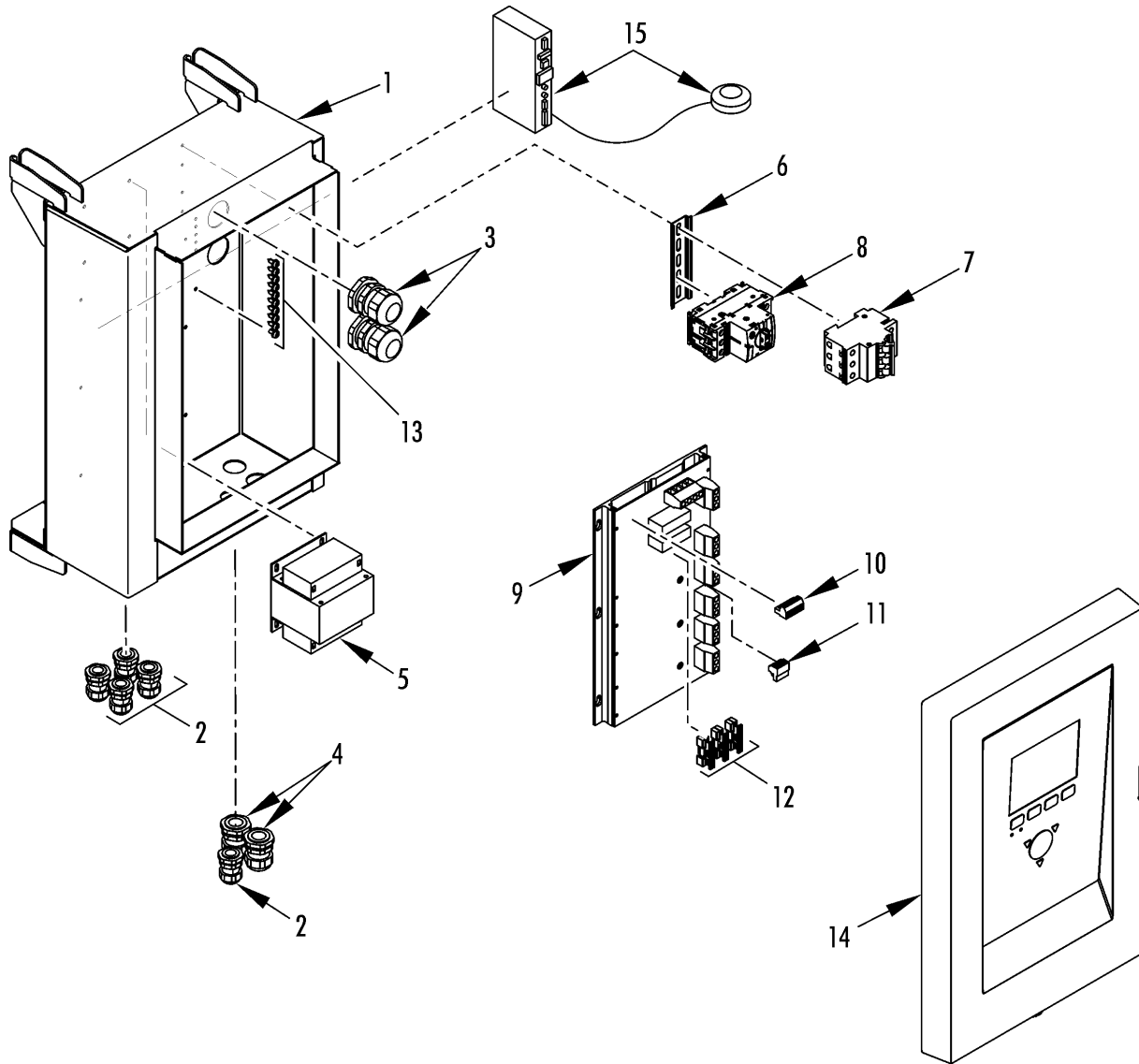


REF	PART#	DESCRIPTION	QTY
1	102-795	COMPRESSOR - scroll	1
	203-516	OIL - compressor	A/R
	40-779	KIT - gasket & grease	1
2	33-2951	• GASKET - power connector	1
	33-2979	• SEALER - silicone grease pack	1
3	55-8994	• SCREW - ground	1
	55-8995	• WASHER - ground	1
4	91-9021	• COVER - terminal box	1
5	40-776	• KIT - thermistor	1
6	51-1433	SCREW - compressor	4
7	51-1435	FLATWASHER (12 mm)	4
8	55-9012	WASHER - vibration damper	4
9	51-1432	SPACER (1/03 - 3/10, height - 17.4, dia 34.3)	4
	51-2033	SPACER (3/10 & after, height - 17.9, dia 34.3)	4
10	51-1436	FLATWASHER (13 mm)	4
11	51-1434	NUT	4
12	41-4004	SWITCH - hpco	1
	203-393	SEALER - thread (red)	A/R
13	61-2118	VALVE - suction	1
14	61-2119	VALVE - discharge	1
15	33-727	O-RING - suction	1
16	51-1438	SCREW - flange	2
17	51-1429	LOCKWASHER	2
18	33-2805	GASKET - flange	1
19	51-1437	SCREW - discharge valve	2
20	51-358	WASHER - sealing	2
22	40-782	KIT - power cord	1



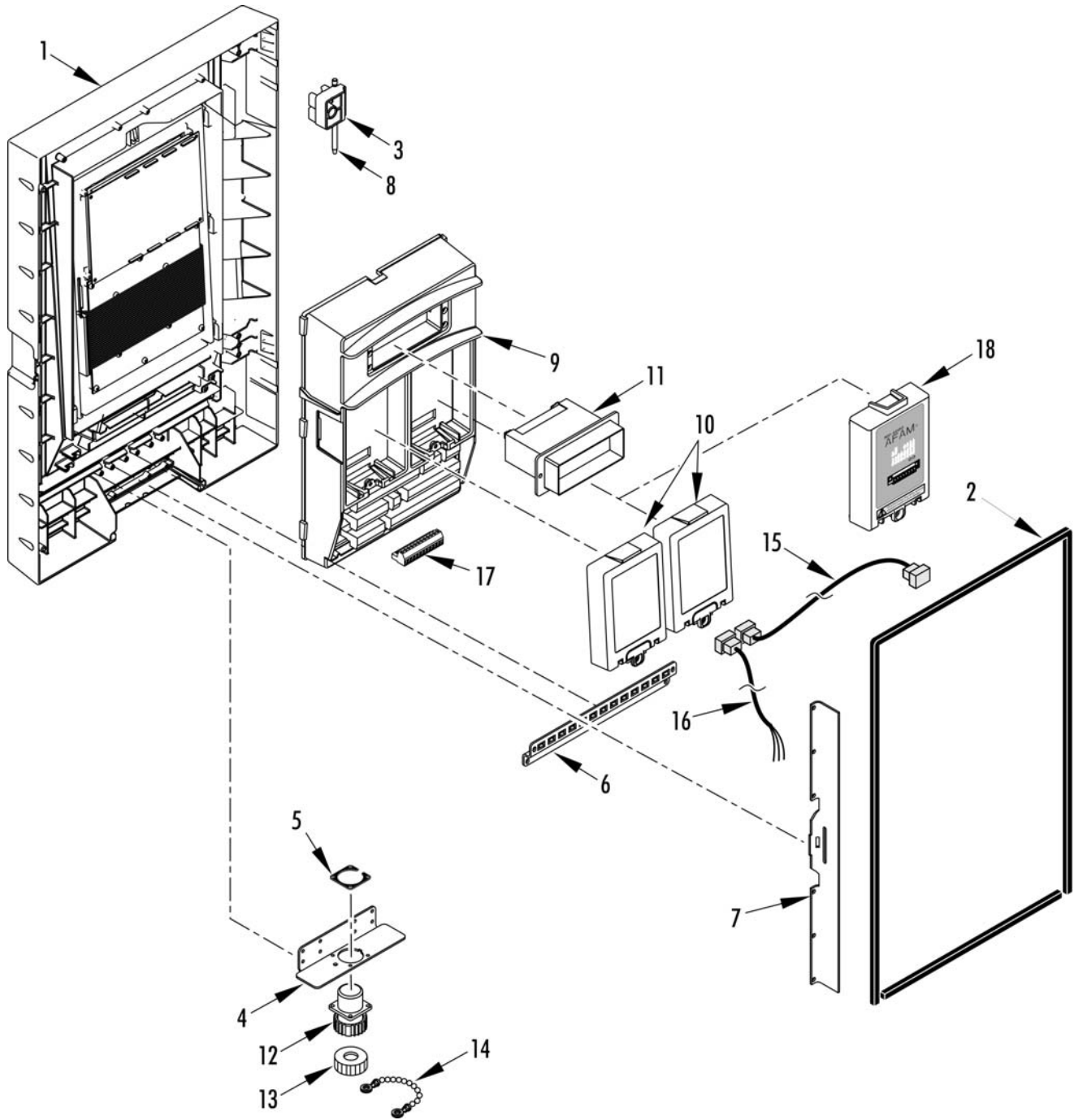


REF	PART#	DESCRIPTION	QTY
1	40-1044	SENSOR - kit (defrost, ambient, air return, supply & coil)	A/R
2	41-3685	HARNESS - evaporator (see 247C5)	1
3	92-5546	BRACKET - cable restraint	1
	51-1445	SCREW - bracket	2
	51-1446	LOCKWASHER	2
	51-1441	FLATWASHER	2
	55-9054	WASHER - insulator	2
4	45-1992	CABLE - power (19.2 meters, 63 ft, 11/4 ga)	1
5	41-1976	• PLUG - power (Minnekes)	1
	44-9891	• TERMINAL - pin	7
	40-692	KIT - Cable Splice	1
	45-1908	CABLE (11/4, 250 ft roll)	A/R
	45-2272	CABLE (11/4, 1000 ft roll)	A/R
6	102-795	COMPRESSOR - scroll (see 259C5)	1
7	41-4004	SWITCH - hpc0	1
8	NSS	HEATER GROUP (see grid 259A4)	1
9	104-759	MOTOR - condenser fan (see 235E8)	1
10	41-2953	HARNESS - condenser fan (see 235E8)	1
11	104-691	MOTOR - evaporator fan (see 247C5)	2
12	NSS	PANEL - USDA receptacle (see 235G4/247C9)	1
13	41-6150	TRANSDUCER - suction (200PSI, see 247C0)	1
14	91-9754	SENSOR - pocket	2
15	41-9220	SENSOR - humidity	1
16	61-2470	VALVE - vapor injection (see 247C0)	1
	41-5460	COIL - valve	1
17	41-4300	SENSOR - compressor	1
18	61-2057	VALVE - digital (see 247C0)	1
	41-7937	• COIL (only)	1
19	NSS	BOX - control (see 235G2)	1
20	40-782	CABLE - compressor	1
21	51-270	CONNECTOR - liquid tite	1
22	42-373	CABLE - connection	1
23	42-374	CABLE - supply	1
24	40-1163	KIT, CO2 / O2 RS485 sensor	1
25	42-375	HUMIDITY SENSOR -humidity (for OOCL)	1
26	NSS	SENSOR - temperature (for OOCL, not supplied by Thermo King)	3



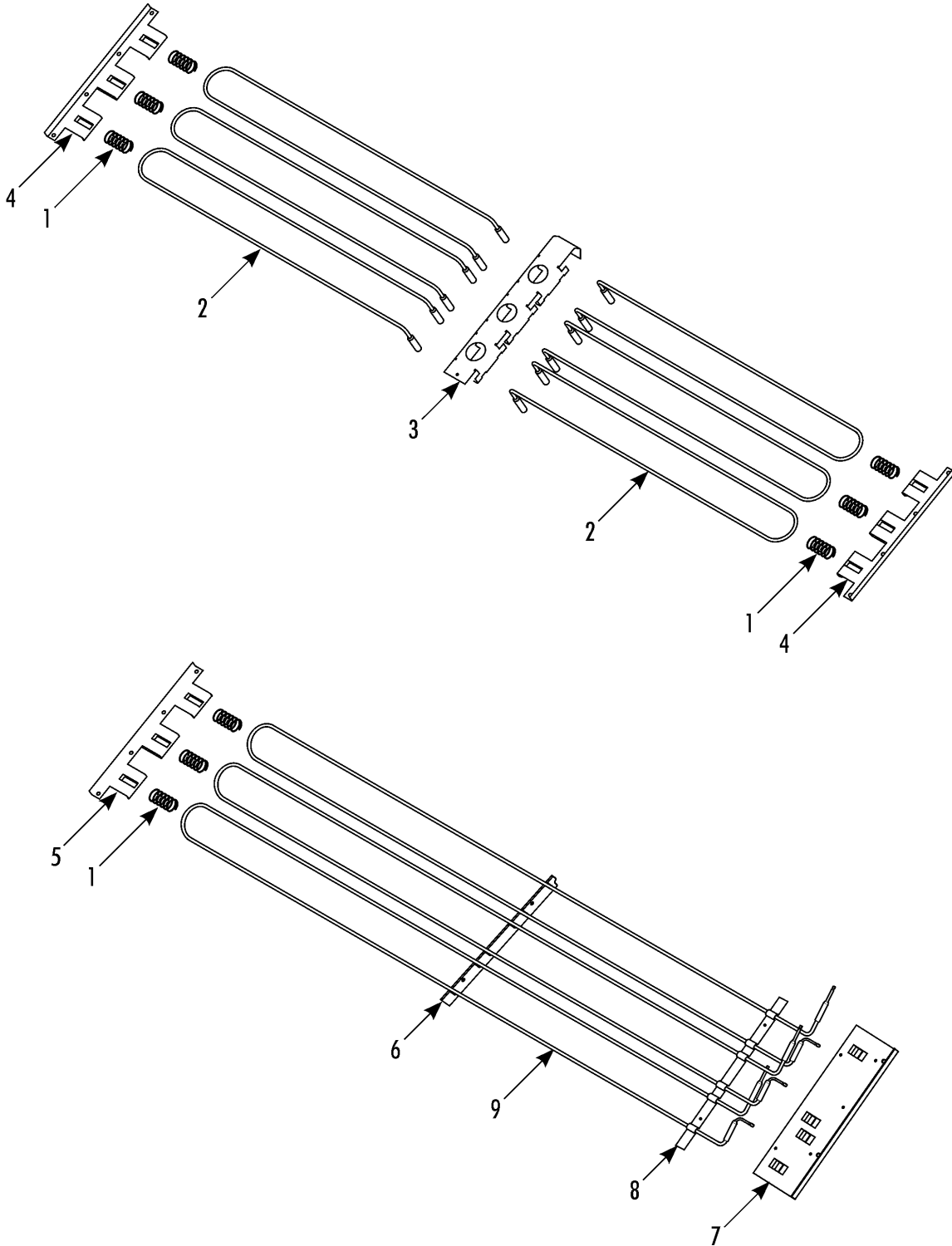


REF	PART#	DESCRIPTION	QTY
1	04-7225	BASE - control box (mP-4000)	1
2	55-5900	• CONNECTOR - liquid tite	5
3	55-5112	• CONNECTOR - liquid tite	2
4	55-5257	• CONNECTOR - liquid tite	2
5	41-8763	• TRANSFORMER	1
	51-1419	• NUT	4
	51-1872	• FLATWASHER	4
6	92-7635	• RAIL - din	1
	51-1445	• SCREW	4
	55-9485	• FLATWASHER	4
7	41-5104	• BREAKER - circuit (25 amp)	1
	42-352	• BREAKER - circuit (adjustable, 25 - 32 amp)	1
8	41-3605	• CONTACTOR (CI 25)	1
9	41-8719	• MODULE - power (MP-4000)	1
10	504-843	• BLOCK - terminal (6 pole)	1
11	41-3596	• BLOCK - terminal (4 pole)	1
12	41-9286	• FUSE & COVER (20 amp, black fuse)	3
13	51-336	• SCREW	10
	51-1873	• LOCKWASHER	10
14	NSS	• DOOR - controller (see 235G3 or 259C6)	1
15	NSS	GPS MODEM & ANTENNA (for OOCL, not supplied by Thermo King)	1
	92-9521	BRACKET - GPS (for OOCL)	1
	51-336	SCREW - bracket	4
	55-9444	WASHER - insulating	4



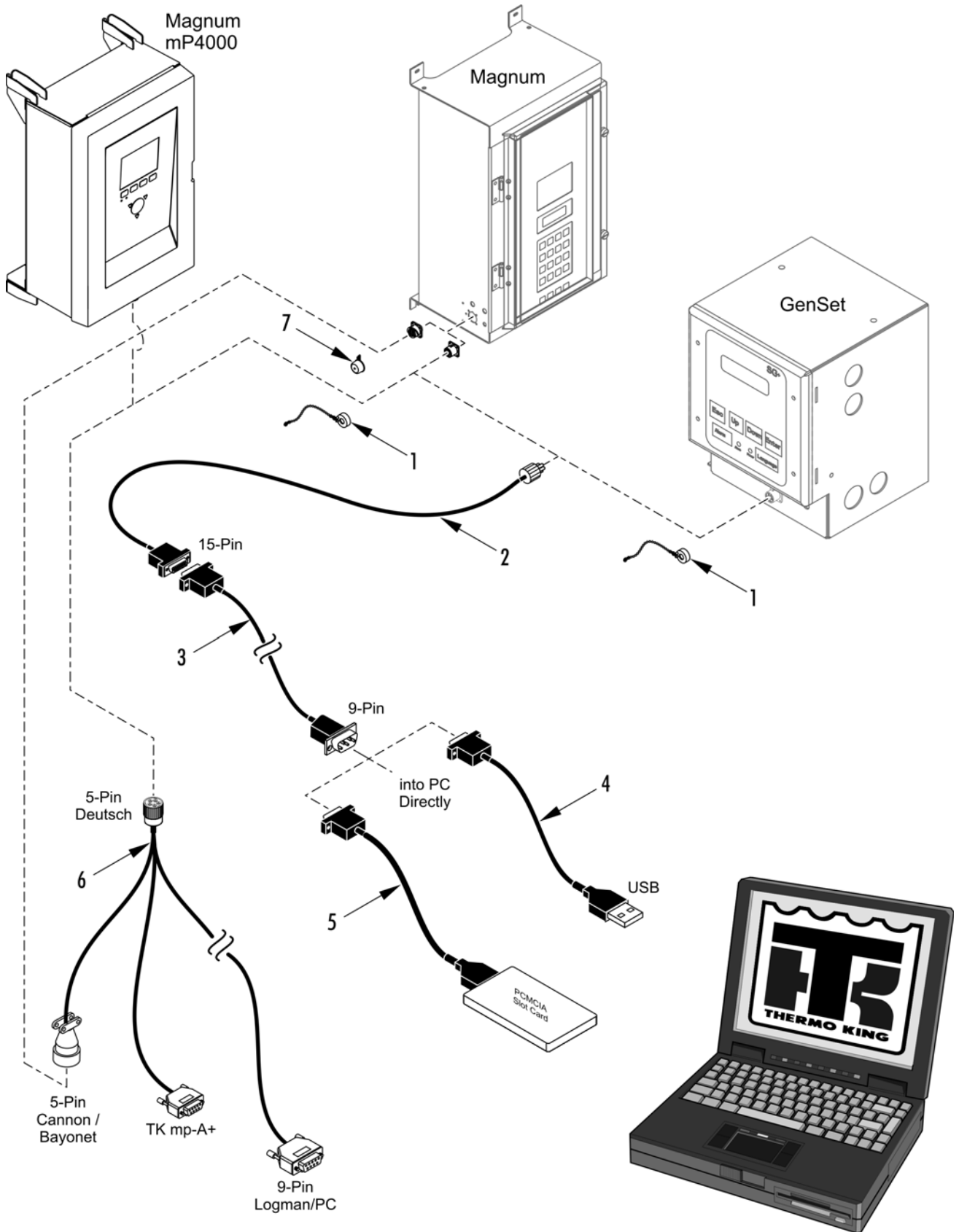


REF	PART#	DESCRIPTION	QTY
1	41-8723	DOOR - front (mP-4000, includes keypad and VGA display)	1
2	33-4502	GASKET - door	1
3	51-1844	HINGE - top	2
	51-1874	SCREW	6
4	92-7636	BRACKET - connector	1
5	92-7637	BRACKET - washer deutsch plug	1
	51-1875	RIVET (3 X 10 mm)	4
	51-1876	RIVET (3 X 8 mm)	1
6	92-7638	BRACKET - cable	1
7	92-7559	BRACKET - lock reinforcement	1
8	51-1843	PIN - hinge	2
9	45-2295	CONTROLLER (MP-4000)	1
10	41-8718	MODULE - blanking	2
11	41-8717	MODULE - battery	1
12	41-8724	CABLE - retriever	1
13	41-2406	CAP - dust	1
14	92-8690	STRAP - cap	1
15	41-8716	CABLE - serial (CM-4000 to PM-4000)	1
16	41-8715	CABLE - serial (cargo)	1
17	41-9974	CONNECTOR - 8-pin	1
	41-9975	CONNECTOR - 9-pin	1
	41-9976	CONNECTOR - 4-pin	1
	41-9977	CONNECTOR - 6-pin	1
	41-9978	CONNECTOR - 17-pin	1
18	42-353	MODULE - AFAM+	1



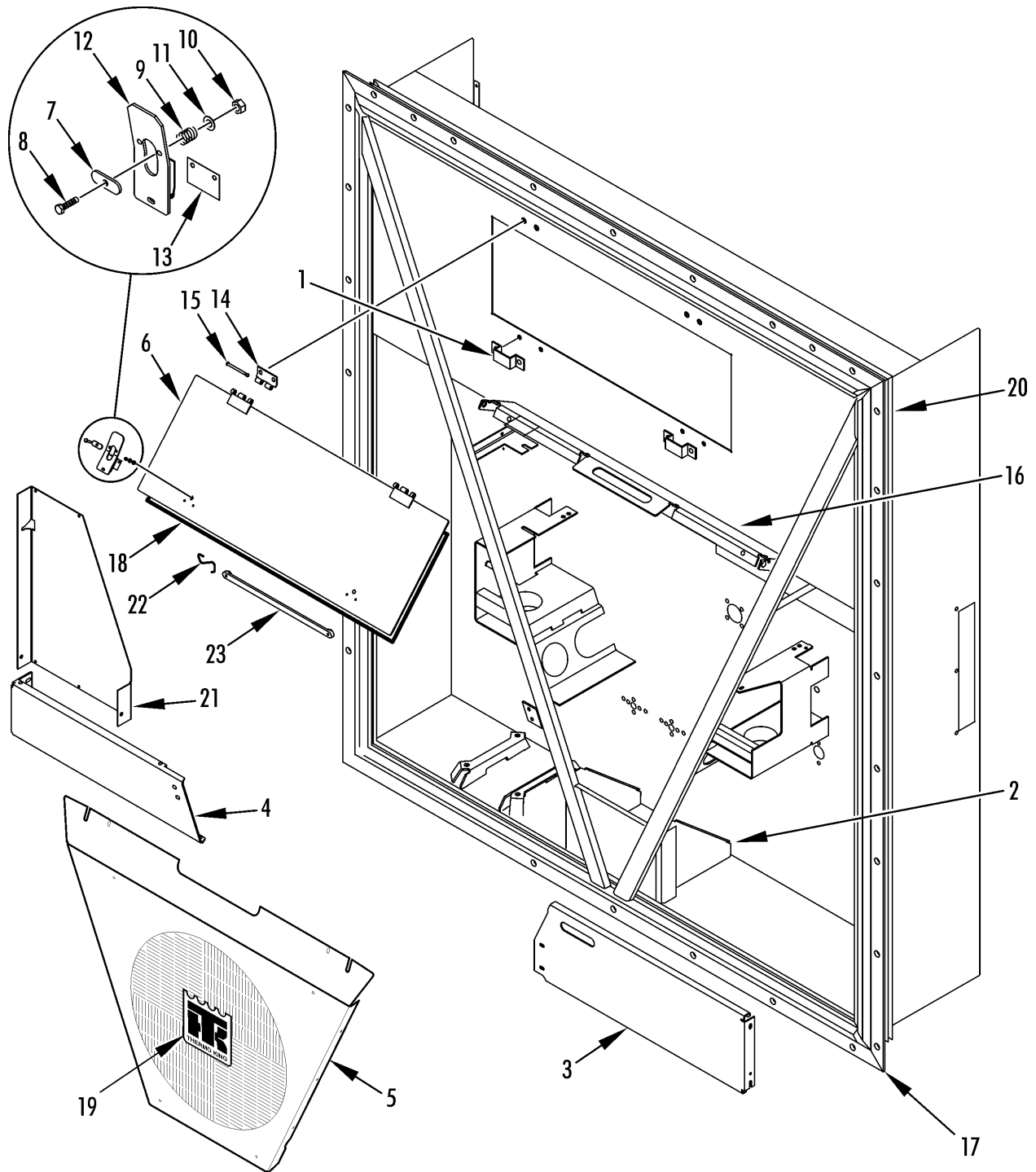


REF	PART#	DESCRIPTION	QTY
1	91-8140	SPRING - heater	A/R
2	45-1927	HEATER (680W, 2 meter leads)	6
3	91-8142	BRACKET - heater (center, 15.4/404 long, MAGNUM)	1
	91-8634	BRACKET - heater (center, 13.6/347 long, MAGNUM SL)	1
4	91-8467	BRACKET - heater (ends, 13.8/350 long, MAGNUM)	2
	91-8629	BRACKET - heater (ends, 12.8/326 long, MAGNUM SL)	2
	51-1447	SCREW - bracket	A/R
5	91-8629	BRACKET - heater (spring end)	1
6	92-9488	BRACKET - heater (center)	1
7	92-9489	BRACKET - heater (lead end)	1
8	92-9521	BRACKET - heater (holddown)	1
	51-1447	SCREW - bracket	A/R
9	45-2441	HEATER (1360W, 18 ga leads)	3
	45-2451	HEATER (2000W, 16 ga leads)	3



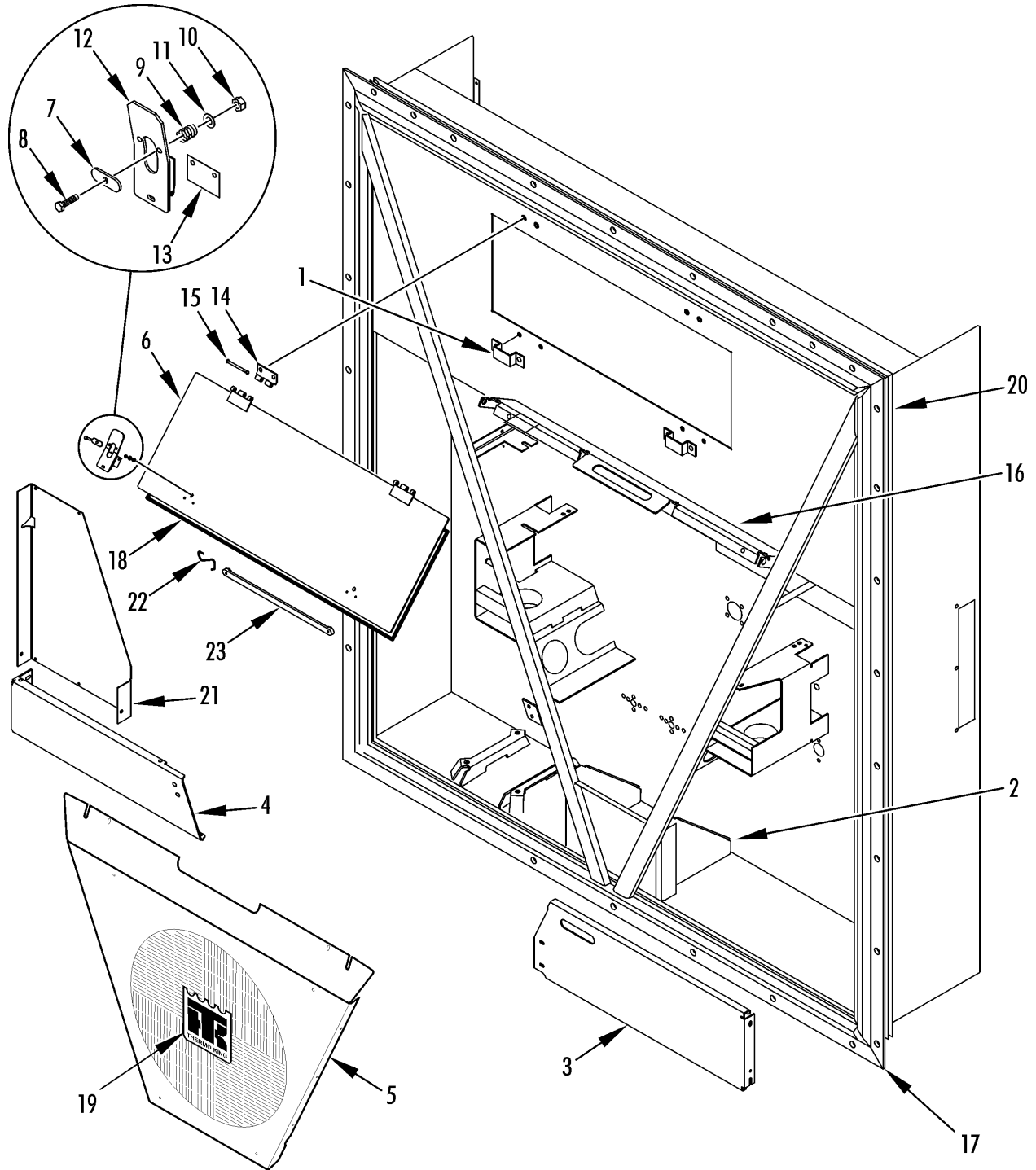


REF	PART#	DESCRIPTION	QTY
1	41-2406	CAP - dust (5-pin Deutsch)	1
	99-3685	CHAIN - cap	1
2	204-918	CABLE - data (5-pin Deutsch to 15-pin D connectors)	1
	204-974	CABLE - data (5-pin Cannon bayonet to 15-pin D connectors)	1
	204-975	CABLE - data (5-pin Cannon threaded to 15-pin D)	1
3	44-9417	CABLE - data (15-pin D connector, 9-pin D PC, 20 ft)	1
	44-9418	CABLE - data (15-pin D connector, 9-pin D PC, 50 ft)	1
4	204-1109	ADAPTER - 9-pin D PC connector to USB	1
5	N/A	ADAPTER - 9-pin D PC to PC card (see service bulletin C061)	1
6	41-8065	CABLE - data download	1
7	41-3588	CAP - dust (5-pin Cannon)	1



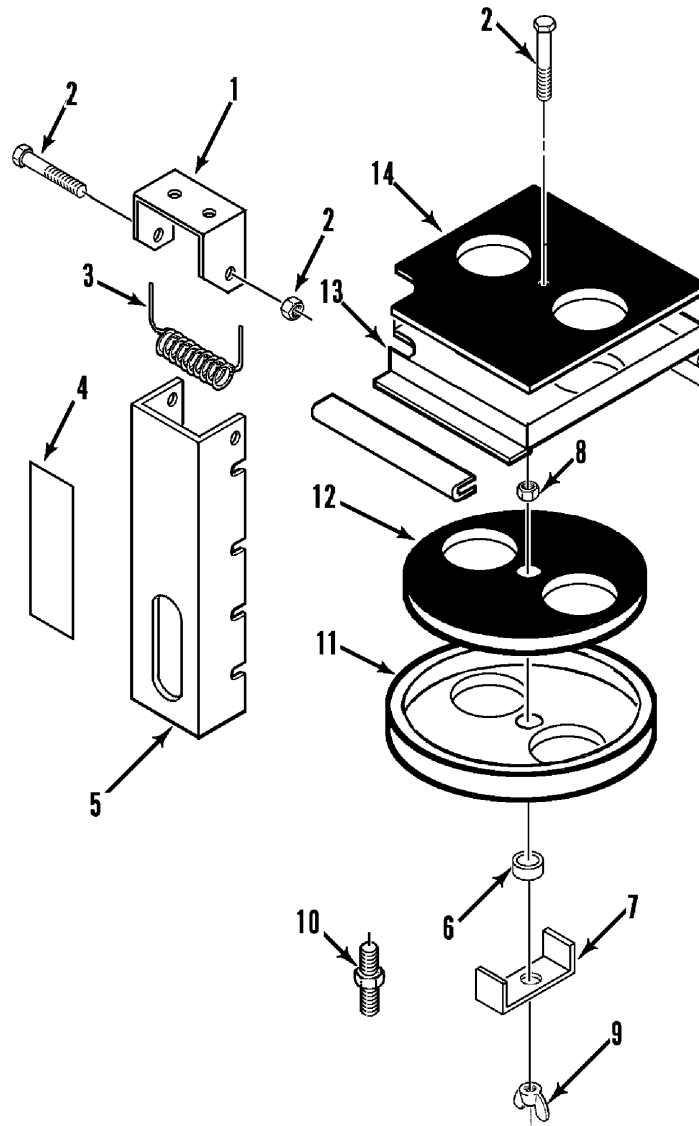


REF	PART#	DESCRIPTION	QTY
1	91-8195	KEEPER - door latch	2
	51-1459	SCREW - keeper	4
	55-8933	WASHER (nylon)	8
2	91-8108	BRACKET - frame	1
	51-1442	SCREW - bracket	3
	51-1441	WASHER	6
	55-9541	WASHER (nylon)	6
3	98-6560	PLATE - cable storage (front)	1
	51-1425	NUT	2
	55-9054	WASHER (nylon)	4
	51-1464	FLATWASHER	4
4	91-8474	PLATE - guard	1
	51-1443	SCREW - plate (25 mm)	4
	51-1444	FLATWASHER	6
	55-8953	WASHER - insulation	6
	51-1427	NUT	2
5	98-5925	GRILLE - condenser (see 189C4)	1
	51-1445	SCREW - grille	4
	51-1464	FLATWASHER	4
	55-9054	WASHER (nylon)	4
6	98-6518	DOOR - evaporator	1
7	91-9040	• KNOB	2
8	51-1459	• SCREW - knob	2
9	91-8199	• SPRING	2
10	51-2078	• NUT	2
11	51-619	• WASHER (nylon)	2
12	91-9041	• LATCH - door	2
	55-3101	• RIVET - latch	4
13	91-8134	• INSULATOR - latch	2
14	509-1654	• HINGE - frame	2
15	91-8256	• PIN - hinge (w/ snap)	2
	55-9313	SCREW - hinge (TIR seal)	4
	55-9541	WASHER (nylon)	4
16	92-891	BRACKET - safety hook	1
	51-1443	SCREW - bracket	4
	51-1430	FLATWASHER	8
	55-9541	WASHER (nylon)	8
17	98-8917	FRAME - condenser (MAGNUM SL-40)	1
18	33-2983	GASKET - unit	1
19	33-3969	GASKET - evaporator door	1
20	91-8475	NAMEPLATE - TK	1



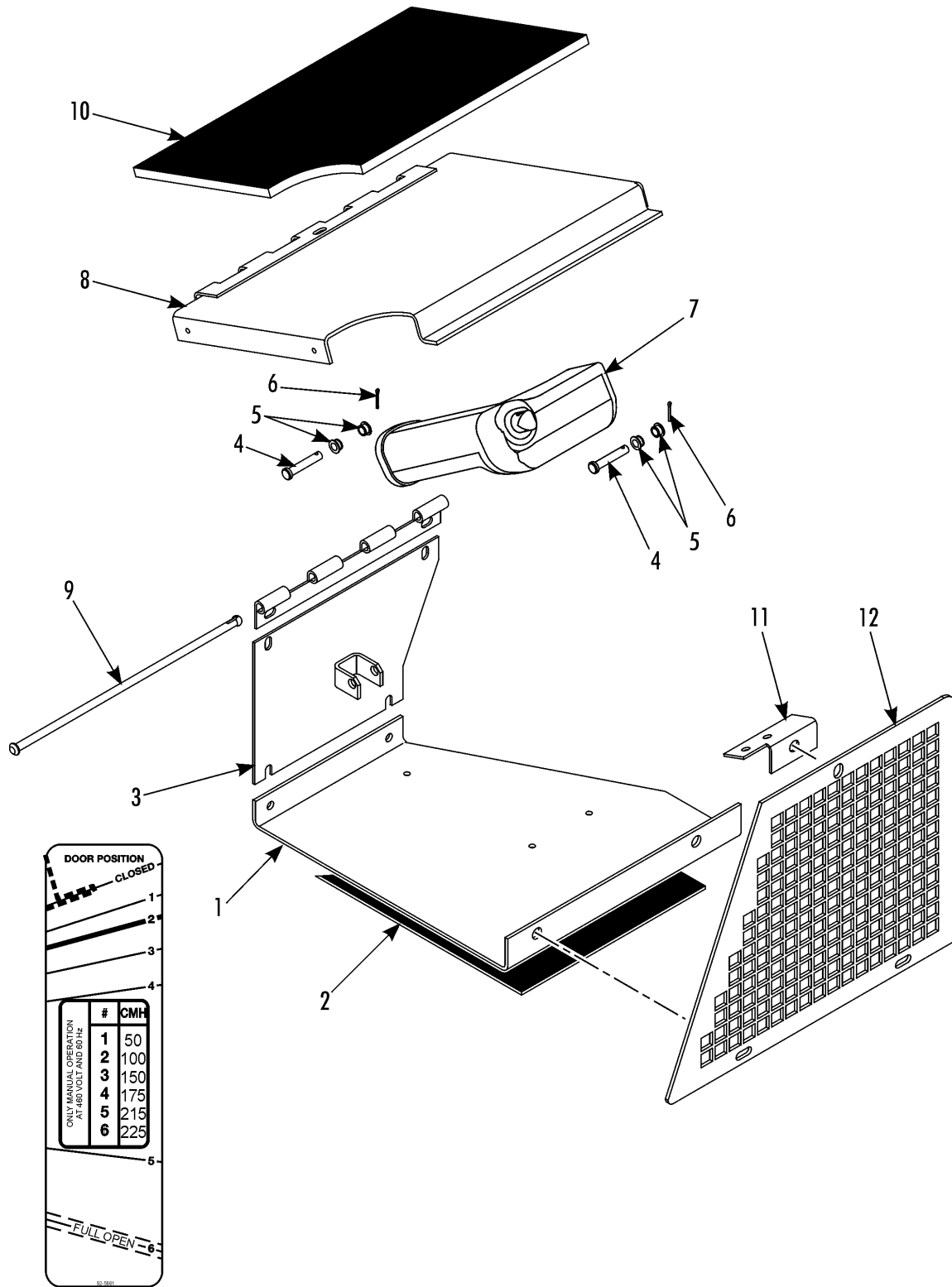


REF	PART#	DESCRIPTION	QTY
21	92-8691	COVER (instead of thermometer)	1
	51-1467	SCREW - cover	3
	55-8953	WASHER - insulating	3
	51-1444	FLATWASHER	3
22	91-9039	HOOK - strap	1
	55-5261	CLAMP - hook	1
	51-1447	SCREW - clamp	1
23	509-937	STRAP - door	1
	51-801	SCREW - strap	1
	55-8893	FLATWASHER	2





REF	PART#	DESCRIPTION	QTY
	91-8252	VENT - air (complete)	1
1	91-9048	• BRACKET - air vent handle	1
2	51-1426	• SCREW - handle	2
	51-1427	• NUT	1
	55-9541	• WASHER - nylon	4
3	91-8100	• SPRING	1
4	92-440	• NAMEPLATE - Do Not Open Below 0 C	1
5	91-8102	• HANDLE - air vent	1
6	77-2467	• BEARING - slide	1
7	91-8104	• BRACKET - air vent handle	1
8	51-1428	• NUT	2
	51-1429	• LOCKWASHER	1
9	51-1431	• NUT - wing	1
10	55-9168	• HOSE - barb	1
	55-8933	• WASHER - nylon	1
11	91-8103	• DISK - air vent	1
12	33-4255	• GASKET - air vent	1
13	91-8105	• PLATE - air vent (complete)	1
14	33-2944	•• GASKET - air vent	1
	92-9524	•• PIN - hinge (w/ snap)	1
	51-1442	• SCREW - plate to frame	2
	51-1441	• WASHER	2
	51-619	• WASHER	2



DOOR POSITION

CLOSED

1

2

3

4

#	CMH
1	50
2	100
3	150
4	175
5	215
6	225

5

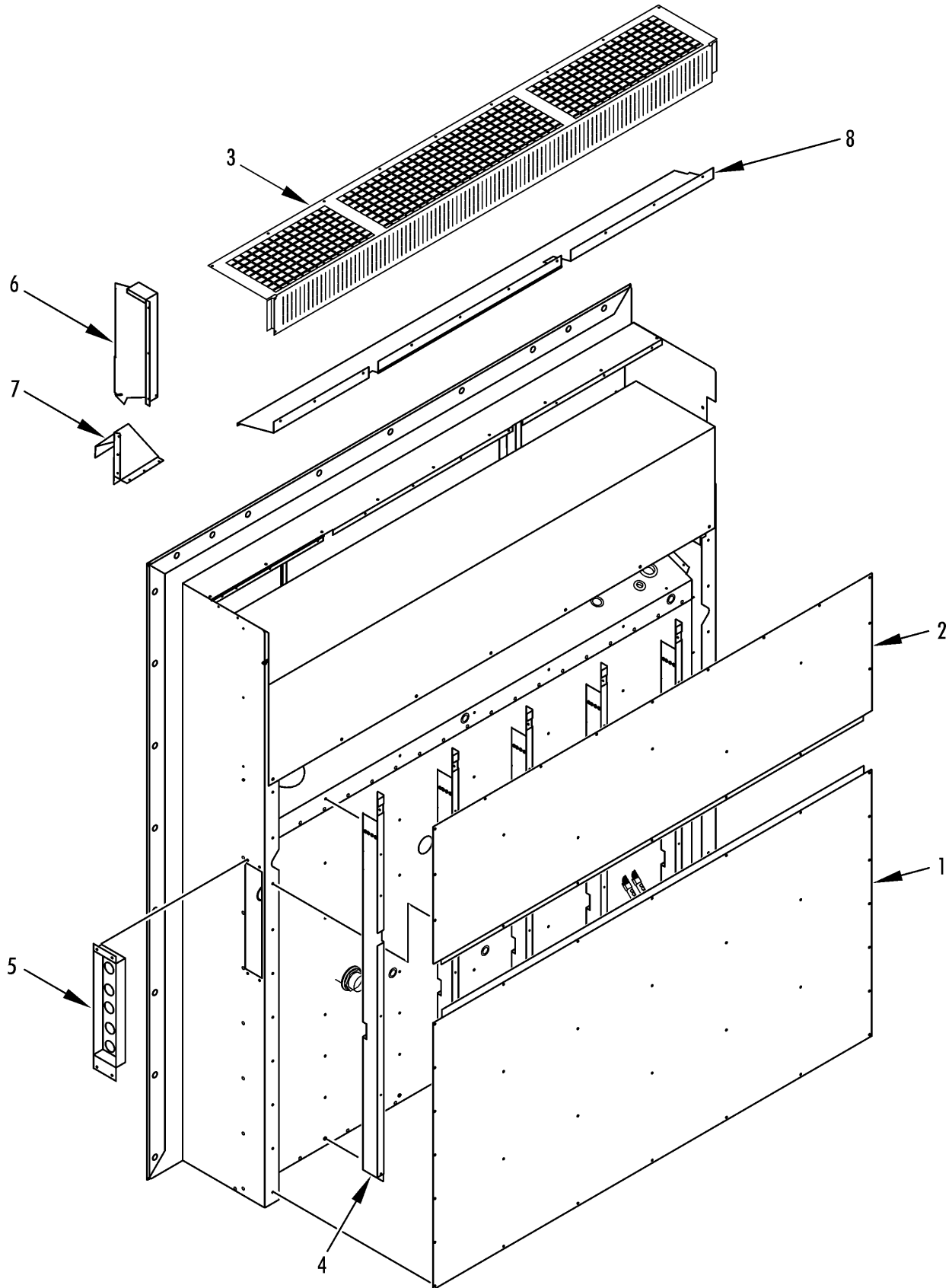
FULL OPEN

6

13

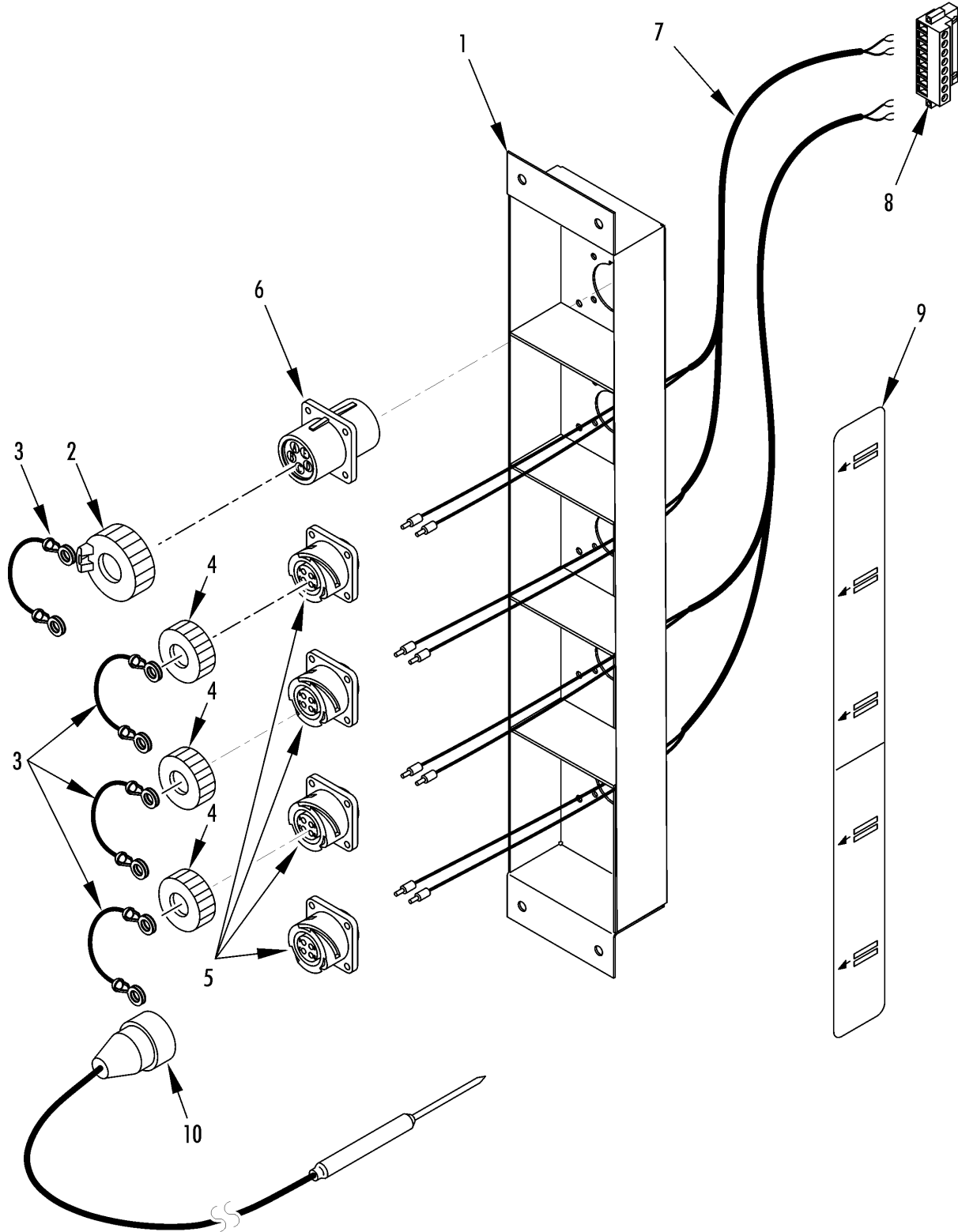


REF	PART#	DESCRIPTION	QTY
1	92-9522	BRACKET - air vent	1
	55-7035	SCREW - bracket	2
	51-619	WASHER - insulator	2
2	33-3264	GASKET	1
3	92-9523	BRACKET - rear	1
	51-1445	SCREW - bracket	2
	51-1464	FLATWASHER	2
	55-9054	WASHER - insulator	2
4	51-1496	PIN - clevis	2
5	77-2870	BEARING	4
6	55-2550	PIN - cotter	2
7	41-7238	ACTUATOR	1
8	92-5687	DOOR - AFAM	1
9	92-9524	PIN - hinge	1
10	33-3265	GASKET - air vent	1
11	92-416	BRACKET - grille	1
	51-1445	SCREW - bracket	2
	55-9054	WASHER - insulator	2
	51-1464	FLATWASHER	2
12	92-9525	GRILLE - fresh air	1
	51-1422	SCREW - grille	3
	51-619	WASHER - insulator	3
13	92-9525	LABEL - AFAM door position	1



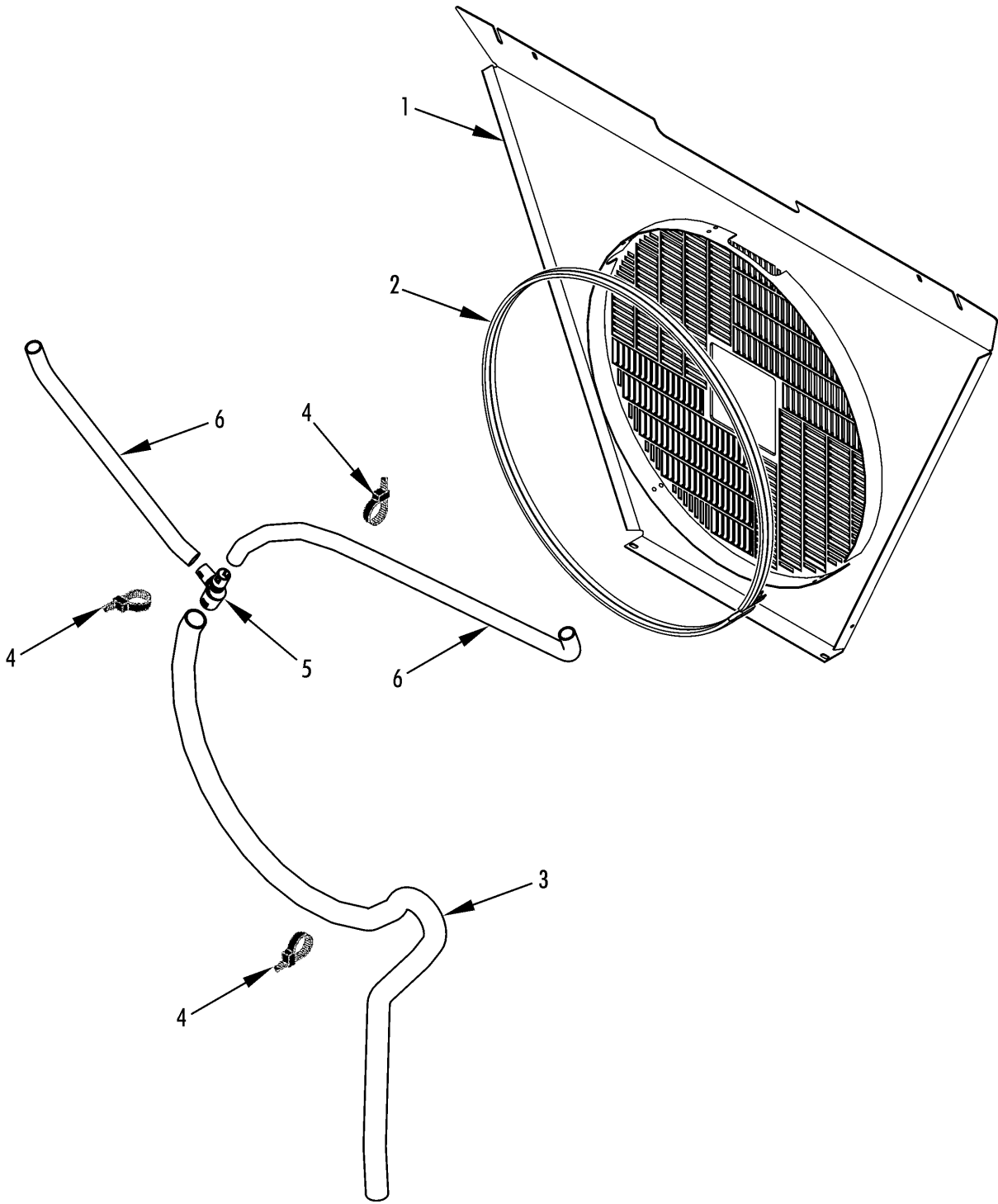


REF	PART#	DESCRIPTION	QTY
1	98-5773	PLATE - rear (bottom)	1
2	98-5772	PLATE - rear (top)	1
	51-336	SCREW - plate	23
	55-9444	WASHER - insulating	23
	55-3136	RIVET - plate	29
3	98-6556	GRILLE - evaporator (MAGNUM 40-SL, see 247C7)	1
	55-3136	RIVET - grille	17
4	92-2774	CHANNEL - Z (57 mm deep)	5
	51-2079	RIVET - channel	35
5	NSS	PANEL - USDA receptacle (see 247C9)	1
	55-9323	RIVET - channel	8
6	91-9923	CHANNEL - air	1
7	91-9924	INLET - fresh air	1
8	91-9331	CHANNEL - fresh air	1
	55-9323	RIVET - inlet channel	A/R





REF	PART#	DESCRIPTION	QTY
	42-308	PANEL ASSEMBLY - USDA receptacle	1
1	92-8692	• PANEL - USDA receptacle	1
2	41-2406	• CAP - dust	1
3	92-8690	• STRAP - cap	5
4	41-890	• CAP - dust	4
	55-9323	• RIVET - cap	4
5	41-2541	• RECEPTACLE (3 pin, Deutsch)	4
6	41-2405	• CONNECTOR - receptacle (5 pin, Deutsch)	1
	55-2270	• RIVET - receptacle	20
7	41-7183	CABLE - NTC	2
8	41-9974	CONNECTOR - plug (8 pin)	1
9	92-5392	NAMEPLATE - data download USDA	1
10	41-8188	SENSOR - thermistor (3 pin Deutsch, 14 m NTC, USDA)	4





REF	PART#	DESCRIPTION	QTY
1	98-5925	GRILLE - condenser	1
	51-1445	SCREW - grille	4
	51-1464	FLATWASHER	4
	55-9054	WASHER (nylon)	4
2	33-3043	GASKET - grille (extrusion)	1
3	11-9734	HOSE - drain (29 mm id, cut as required)	A/R
4	55-2330	BANDWRAP	A/R
5	11-9735	TEE - drain hose	1
6	11-9576	HOSE - drain (21 mm id, cut as required)	A/R



1

THERMO KING

3



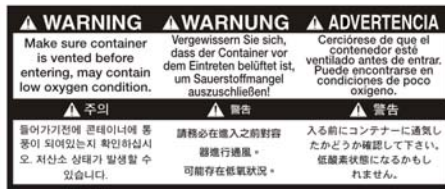
2



4



5



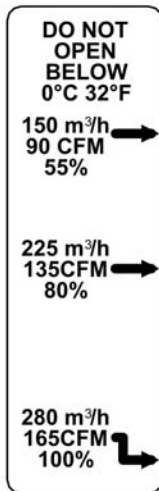
7



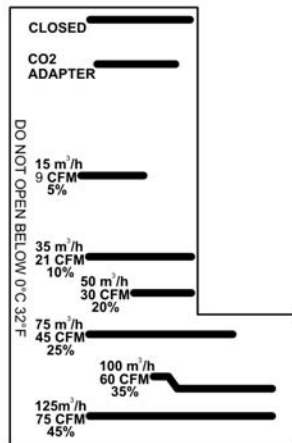
8



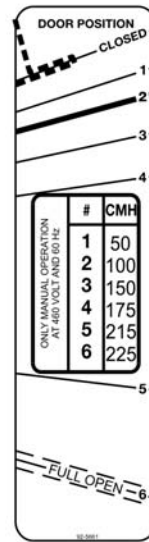
6



9



10



11



12



REF	PART#	DESCRIPTION	QTY
1	91-8475	NAMEPLATE - TK (crest)	1
2	92-4305	NAMEPLATE - IR logo (red/black)	1
3	91-9778	NAMEPLATE - Thermo King	1
4	91-8154	NAMEPLATE - R404A	1
5	91-8694	NAMEPLATE - Warning, Fan Start	1
6	92-5392	NAMEPLATE - USDA Connections	1
7	92-2585	NAMEPLATE - Warning, Low Oxygen	1
8	92-4724	NAMEPLATE - Warning English	1
9	92-440	NAMEPLATE - Air Vent Handle	1
10	91-9831	NAMEPLATE - Air Vent Door	1
11	92-5661	NAMEPLATE - AFAM Door Position	1
12	92-6814	NAMEPLATE - AFAM +	1

INDEX NUMERICAL BY PART NUMBER

04-7225	18	41-7937	12, 16	51-1445	16, 18, 26, 32, 38
102-795	10, 14, 16	41-8065	24	51-1446	16
104-691	8, 16	41-8188	36	51-1447	8, 22, 28
104-759	6, 16	41-8715	20	51-1459	26
11-9576	38	41-8716	20	51-1464	10, 12, 26, 32, 38
11-9734	38	41-8717	20	51-1467	28
11-9735	38	41-8718	20	51-1477	12
203-393	14	41-8719	18	51-1496	32
203-516	14	41-8723	20	51-1843	20
204-1109	24	41-8724	20	51-1844	20
204-918	24	41-8763	18	51-1871	10
204-974	24	41-890	36	51-1872	18
204-975	24	41-9220	16	51-1873	18
33-1162	10	41-9286	18	51-1874	20
33-2805	14	41-9974	20, 36	51-1875	20
33-2944	30	41-9975	20	51-1876	20
33-2946	8	41-9976	20	51-2033	14
33-2950	6	41-9977	20	51-2078	26
33-2951	14	41-9978	20	51-2079	34
33-2979	14	42-308	36	51-270	16
33-2983	26	42-352	18	51-273	10
33-3043	38	42-353	20	51-336	18, 34
33-3044	8	42-373	16	51-358	14
33-3215	8	42-374	16	51-619	8, 26, 30, 32
33-3264	32	42-375	16	51-801	28
33-3265	32	44-9417	24	55-2270	36
33-367	6, 8	44-9418	24	55-2296	12
33-3838	8	44-9891	16	55-2330	38
33-3912	10	45-1908	16	55-2550	32
33-3969	26	45-1927	22	55-302	10
33-4255	30	45-1992	16	55-3101	26
33-4499	12	45-2272	16	55-3136	34
33-4500	12	45-2295	20	55-3251	10
33-4501	12	45-2441	22	55-5112	18
33-4502	20	45-2451	22	55-5257	18
33-566	12	504-843	18	55-5261	28
33-727	14	506-364	10	55-5900	6, 8, 18
40-1044	16	509-1654	26	55-7035	32
40-1163	16	509-937	28	55-7066	8
40-692	16	51-1419	18	55-8893	28
40-776	14	51-1422	8, 32	55-8933	26, 30
40-779	14	51-1425	10, 12, 26	55-8950	12
40-782	14, 16	51-1426	30	55-8951	12
41-1976	16	51-1427	6, 8, 26, 30	55-8953	26, 28
41-2405	36	51-1428	8, 30	55-8994	14
41-2406	20, 24, 36	51-1429	6, 8, 14, 30	55-8995	14
41-2541	36	51-1430	26	55-9012	14
41-2953	6, 16	51-1431	30	55-9027	10
41-3588	24	51-1432	14	55-9054	6, 10, 12, 16, 26, 32, 38
41-3596	18	51-1433	14	55-9162	8
41-3605	18	51-1434	14	55-9168	30
41-3685	8, 16	51-1435	14	55-9217	8
41-4004	12, 14, 16	51-1436	14	55-9313	26
41-4300	16	51-1437	14	55-9323	34, 36
41-5104	18	51-1438	14	55-9444	18, 34
41-5460	10, 16	51-1441	8, 10, 12, 16, 26, 30	55-9485	18
41-6150	12, 16	51-1442	6, 10, 12, 26, 30	55-9541	26, 30
41-7183	36	51-1443	6, 8, 26	60-285	6, 10
41-7238	32	51-1444	6, 8, 26, 28	61-1847	12

INDEX NUMERICAL BY PART NUMBER

61-2048	12	91-8475	26, 40	99-3685	24
61-2049	12	91-8629	22	99-4931	8
61-2050	12	91-8634	22		
61-2051	12	91-8694	40		
61-2057	12, 16	91-9021	14		
61-2118	14	91-9039	28		
61-2119	14	91-9040	26		
61-2162	10	91-9041	26		
61-2238	10	91-9048	30		
61-2465	12	91-9328	8		
61-2466	12	91-9331	34		
61-2467	10	91-9754	16		
61-2468	12	91-9778	40		
61-2469	10	91-9831	40		
61-2470	10, 16	91-9923	34		
61-2471	10	91-9924	34		
61-2472	10	92-2229	10, 12		
61-2474	12	92-2585	40		
61-2475	10	92-2774	34		
61-2476	12	92-2775	8		
61-2477	10	92-2788	8		
61-3502	12	92-2789	8		
61-3503	10	92-3391	12		
61-3506	10	92-3547	10		
61-3525	10	92-3550	12		
61-443	12	92-416	32		
61-5333	10	92-4305	40		
61-5334	10	92-440	30, 40		
61-5335	10	92-4724	40		
61-786	10	92-5392	36, 40		
66-9842	12	92-5546	16		
66-9906	12	92-5661	40		
67-1589	6	92-5687	32		
67-1889	10	92-6814	40		
67-1921	8, 12	92-7559	20		
67-2542	10	92-7635	18		
77-2467	30	92-7636	20		
77-2870	32	92-7637	20		
78-1349	8	92-7638	20		
78-1684	6	92-8690	20, 36		
91-1800	12	92-8691	28		
91-758	10, 12	92-8692	36		
91-8100	30	92-891	26		
91-8102	30	92-9488	22		
91-8103	30	92-9489	22		
91-8104	30	92-9520	10		
91-8105	30	92-9521	18, 22		
91-8108	26	92-9522	32		
91-8134	26	92-9523	32		
91-8140	22	92-9524	30, 32		
91-8142	22	92-9525	32		
91-8154	40	98-5772	34		
91-8195	26	98-5773	34		
91-8199	26	98-5925	26, 38		
91-8252	30	98-6518	26		
91-8256	26	98-6556	34		
91-8466	8	98-6560	26		
91-8467	22	98-6562	8		
91-8474	26	98-8917	26		

INDEX ALPHABETICAL BY DESCRIPTION

A

ACTUATOR **32**
ADAPTER - 9-pin D PC connector to
USB **24**
ADAPTER - 9-pin D PC to PC card **24**
ADAPTER - compressor **10**

B

BANDWRAP **38**
BASE - control box **18**
BEARING **32**
BEARING - slide **30**
BLOCK - coil **8**
BLOCK - terminal **18**
BOX - control **16**
BRACKET **8**
BRACKET - air vent **32**
BRACKET - air vent handle **30**
BRACKET - cable **20**
BRACKET - cable restraint **16**
BRACKET - connector **20**
BRACKET - dehydrator **10**
BRACKET - frame **26**
BRACKET - GPS **18**
BRACKET - grille **32**
BRACKET - heat exchanger **12**
BRACKET - heater **22**
BRACKET - lock reinforcement **20**
BRACKET - motor **8**
BRACKET - rear **32**
BRACKET - safety hook **26**
BRACKET - washer deutsch plug **20**
BREAKER - circuit **18**

C

CABLE **16**
CABLE - compressor **16**
CABLE - connection **16**
CABLE - data **24**
CABLE - data download **24**
CABLE - NTC **36**
CABLE - power **16**
CABLE - retriever **20**
CABLE - serial **20**
CABLE - supply **16**
CAP - dust **20, 24, 36**
CAP - screw **8**
CHAIN - cap **24**
CHANNEL - air **34**
CHANNEL - fresh air **34**
CHANNEL - Z **34**
CLAMP - dehydrator **10**
CLAMP - hook **28**
CLAMP - tube **10, 12**
COIL **12, 16**
COIL - condenser **6, 10**
COIL - evaporator **8, 12**
COIL - valve **10, 16**
COMPRESSOR - scroll **10, 14, 16**

CONNECTOR - 17-pin **20**
CONNECTOR - 4-pin **20**
CONNECTOR - 6-pin **20**
CONNECTOR - 8-pin **20**
CONNECTOR - 9-pin **20**
CONNECTOR - harness & sensor **8**
CONNECTOR - liquid tite **16, 18**
CONNECTOR - plug **36**
CONNECTOR - receptacle **36**
CONTACTOR **18**
CONTROLLER **20**
COVER **28**
COVER - terminal box **14**
COVER - tube **8**

D

DEHYDRATOR **10**
DISK - air vent **30**
DOOR - AFAM **32**
DOOR - controller **18**
DOOR - evaporator **26**
DOOR - front **20**

F

FAN - condenser **6**
FAN - evaporator **8**
FLATWASHER **6, 8, 10, 12, 14, 16,**
18, 26, 28, 32, 38
FRAME - condenser **26**
FUSE & COVER **18**

G

GASKET **6, 32**
GASKET - air vent **30, 32**
GASKET - door **20**
GASKET - evaporator door **26**
GASKET - flange **14**
GASKET - grille **38**
GASKET - power connector **14**
GASKET - unit **26**
GPS MODEM & ANTENNA **18**
GRILLE - condenser **26, 38**
GRILLE - evaporator **34**
GRILLE - fresh air **32**
GRIP - cable **6**
GROMMET **6, 8**

H

HANDLE - air vent **30**
HARNESS - condenser fan **6, 16**
HARNESS - evaporator **16**
HARNESS - evaporator fan **8**
HEAT EXCHANGER - economizer **10**
HEATER **22**
HEATER GROUP **16**
HINGE - frame **26**
HINGE - top **20**
HOOK - strap **28**
HOSE - barb **30**

HOSE - drain **38**
HOUSING - evaporator **8**
HUMIDITY SENSOR - humidity **16**

I

INLET - fresh air **34**
INSULATION - heat exchanger **10**
INSULATION - mylar **12**
INSULATION - tube **12**
INSULATOR - latch **26**

K

KEEPER - door latch **26**
KIT - Cable Splice **16**
KIT - gasket & grease **14**
KIT - power cord **14**
KIT - thermistor **14**
KIT, CO2 / O2 RS485 sensor **16**
KNOB **26**

L

LABEL - AFAM door position **32**
LATCH - door **26**
LOCKWASHER **6, 8, 14, 16, 18, 30**

M

MODULE - AFAM+ **20**
MODULE - battery **20**
MODULE - blanking **20**
MODULE - power **18**
MOTOR - condenser fan **6, 16**
MOTOR - evaporator fan **16**
MOTOR - fan **8**

N

NAMEPLATE - AFAM Door Position **40**
NAMEPLATE - AFAM + **40**
NAMEPLATE - Air Vent Door **40**
NAMEPLATE - Air Vent Handle **40**
NAMEPLATE - Arrow **8**
NAMEPLATE - data download USDA
36
NAMEPLATE - Do Not Open Below 0 C
30
NAMEPLATE - IR logo **40**
NAMEPLATE - R404A **40**
NAMEPLATE - Thermo King **40**
NAMEPLATE - TK **26, 40**
NAMEPLATE - USDA Connections **40**
NAMEPLATE - Warning English **40**
NAMEPLATE - Warning, Fan Start **40**
NAMEPLATE - Warning, Low Oxygen
40
NUT **6, 8, 12, 14, 18, 26, 30**
NUT - adapter **10**
NUT - clamp **10**
NUT - o-ring seal **12**
NUT - receiver tank **10**
NUT - wing **30**

INDEX ALPHABETICAL BY DESCRIPTION

O

OIL - compressor **14**
O-RING **12**
O-RING - plug **10**
O-RING - suction **14**

P

PANEL - USDA receptacle **16, 34, 36**
PANEL ASSEMBLY - USDA
receptacle **36**
PIN - clevis **32**
PIN - cotter **32**
PIN - hinge **20, 26, 30, 32**
PLATE - air vent **30**
PLATE - cable storage **26**
PLATE - guard **26**
PLATE - rear **34**
PLUG - fusible **10**
PLUG - power **16**
PLUG - sight glass hole **10**

R

RAIL - din **18**
RECEPTACLE **36**
RIVET **20**
RIVET - cap **36**
RIVET - channel **34**
RIVET - grille **34**
RIVET - inlet channel **34**
RIVET - latch **26**
RIVET - plate **34**
RIVET - receptacle **36**
RIVET - shroud **8**

S

SCREW **18, 20**
SCREW - bracket **8, 16, 18, 22, 26, 32**
SCREW - clamp **10, 12, 28**
SCREW - coil **6, 8**
SCREW - compressor **14**
SCREW - cover **8, 28**
SCREW - dehydrator **10**
SCREW - discharge valve **14**
SCREW - flange **14**
SCREW - grille **26, 32, 38**
SCREW - ground **14**
SCREW - handle **30**
SCREW - hinge **26**
SCREW - keeper **26**
SCREW - knob **26**
SCREW - motor **6, 8**
SCREW - plate **26, 34**
SCREW - plate to frame **30**
SCREW - strap **28**
SEAL - teflon fiber **10**
SEALER - silicone grease pack **14**
SEALER - thread **14**
SENSOR - compressor **16**
SENSOR - humidity **16**

SENSOR - kit **16**
SENSOR - pocket **16**
SENSOR - temperature **16**
SENSOR - thermistor **36**
SHOULDER **12**
SPACER **10, 12, 14**
SPRING **26, 30**
SPRING - heater **22**
STRAP - cap **20, 36**
STRAP - door **28**
SWITCH - hpco **12, 14, 16**

T

TANK - receiver **10**
TEE **10, 12**
TEE - drain hose **38**
TERMINAL - pin **16**
TRANSDUCER - suction **12, 16**
TRANSFORMER **18**
TRIM - edge guard **8**
TUBE - equalizer **12**
TUBE - exchanger to coil **12**
TUBE - expansion valve bulb **12**
TUBE - expansion valve to exchanger
12
TUBE - expansion valve to tee **12**
TUBE - filter **10**
TUBE - filter to tee **10**
TUBE - heat exchanger to evaporator
12
TUBE - liquid injection **12**
TUBE - receiver to dehydrator **10**
TUBE - receiver to valve **10**
TUBE - suction **12**
TUBE - suction to ball valve **12**
TUBE - tee to distributor **12**
TUBE - tee to exchanger **10**
TUBE - tee to valve **10**
TUBE - valve to coil **10**
TUBE - valve to expansion **10**
TUBE - valve to joint **10**

V

VALVE **12**
VALVE - ball **10, 12**
VALVE - digital **16**
VALVE - discharge **14**
VALVE - expansion **12**
VALVE - flare **12**
VALVE - suction **14**
VALVE - vapor injection **10, 16**
VENT - air **30**

W

WASHER **6, 26, 30, 38**
WASHER - ground **14**
WASHER - insulating **10, 18, 28, 34**
WASHER - insulation **26**
WASHER - insulator **8, 12, 16, 32**

WASHER - nylon **30**
WASHER - sealing **14**
WASHER - vibration damper **14**



Ingersoll Rand's Climate Solutions sector delivers energy-efficient HVACR solutions for customers globally. Its world class brands include Hussmann, a manufacturer of refrigeration and food merchandising solutions, Thermo King, the leader in transport temperature control and Trane, a provider of energy efficient heating, ventilating and air conditioning systems, building and contracting services, parts support and advanced controls for commercial buildings and homes.

Distributed by:

Thermo King Corporate

314 West 90th Street
Minneapolis, MN 55420
Direct (952) 887-2200