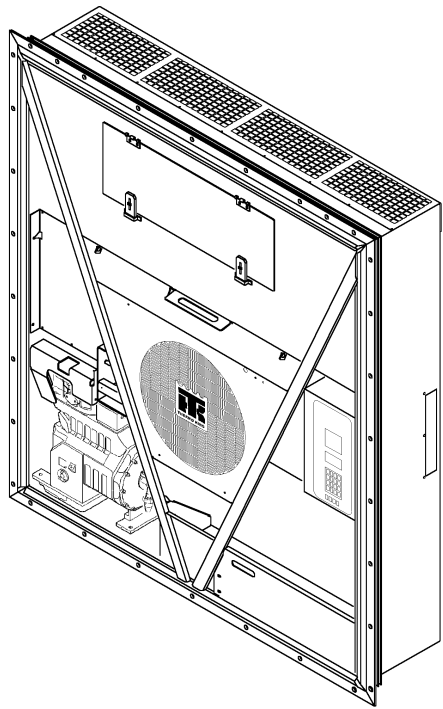


CRR 40-300

TK 51197-0.17



Printed (January 16, 2007)

Copyright © 2001 - Thermo King Corp. - Minneapolis, MN U.S.A.
Electronically printed in U.S.A.

General Information

Tables of Contents

This Parts Manual contains a numerical table of contents listing each assembly name, its associated Grid number and page number. The numerical table of contents is arranged numerically by Grid number. There are references in a parts list referring to other Grid numbers, the numerical table of contents is arranged to facilitate finding the referenced illustrations. At the rear of this parts manual are two indexes, a numerical and alphabetical. The indexes contain all of the part numbers and descriptions which appear in this manual.

Assemblies and Subassemblies

When parts are indented in the description list, they are preceded with a bullet (•). This indicates that the part(s) is available separately or included in an assembly.

GRID NO. 67D6 SWITCH PANEL ASSEMBLY

REF	PART#	DESCRIPTION	QTY
	45-1239	PANEL - assy, switch	1
1	99-1960	• PANEL	1
	99-6280	• • NAMEPLATE - panel	1
2	33-743	• GASKET	1

For example: the switch panel nameplate (99-6280) is available separately, available as part of the switch panel (99-1960) and with the panel assembly (45-1239).

ABBREVIATIONS

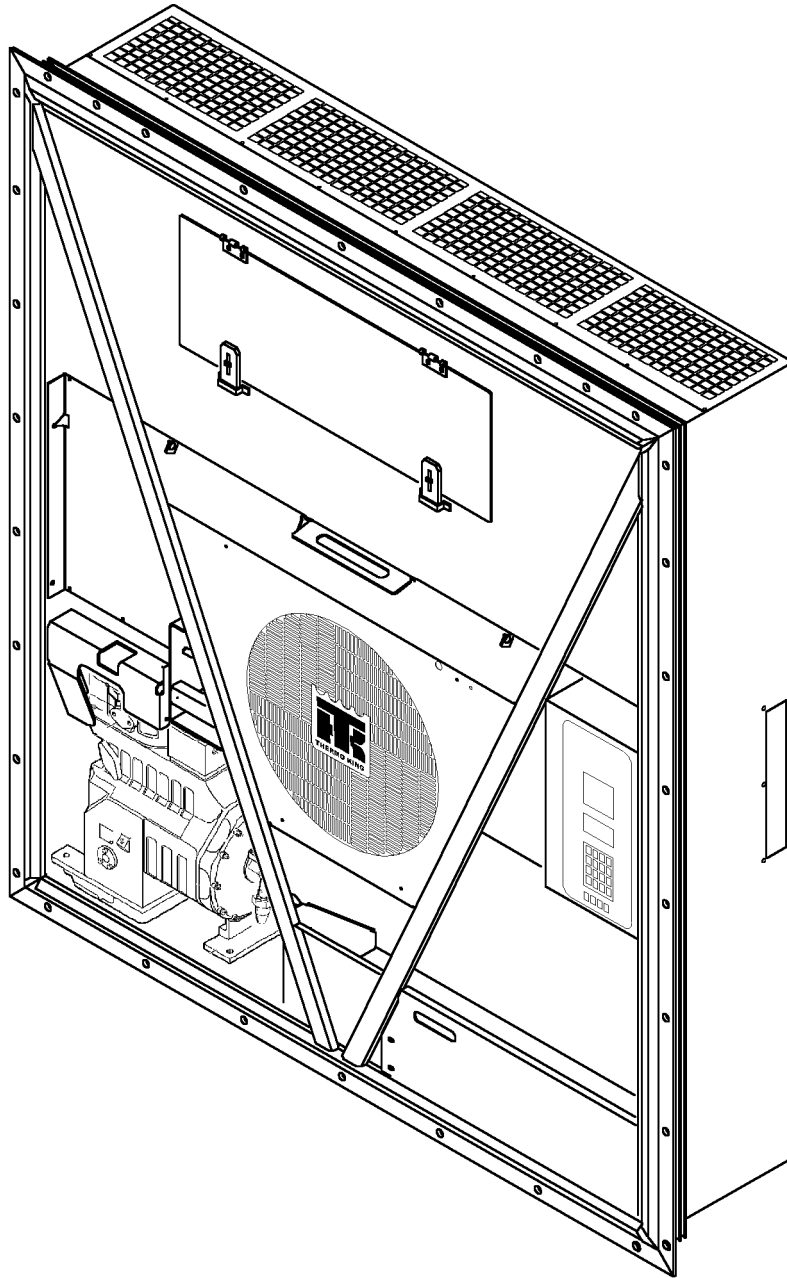
The following abbreviations appear in parts manuals

A AC alternating current	E (continued)	O os oversized
A/R as required	evap. evaporator	od outside diameter
accum accumulator	exch exchanger	P pcb printed circuit board
adj adjusting	exp expansion	pkg package
al aluminum	ext external	ph phase
alt. alternator	F F Fahrenheit	pos positive
A or amp ampere	fill fillister	psi pounds per square inch
assy assembly	fi fuel injection	
B bd board	fl flare	R rad radiator
brg bearing	fpt female pipe thread	rcvr receiver
brkr breaker	ft feet	ref reference
brkt bracket	ftg fitting	reg regulator
C C Celsius	H hex hexagon	req required
cw clockwise	hh hexagon head	rpm revolutions per minute
ccw counter-clockwise	hd head	S sec second
cam camshaft	hp horsepower	sld solder
compr compressor	hsg housing	soc hd. socket head
cond. condenser	I id inside diameter	sol solenoid
conn. connecting, connector	in inch (2.54 centimeters)	spl special
cyl cylinder	incl includes	sq square
D def defrost	inj injection	ss stainless steel
deg degree	int internal	std standard
dehyd. dehydrator	int th internal tooth	stl steel
dia diameter	L liq liquid	suct suction
DC direct current	lg long	sw switch
disch discharge	M mm millimeter	T term terminal
diff differential	mpt male pipe thread	temp temperature
E EMI Extended	mod modulating	thk thick
. Maintenance Interval	N neg negative	U us undersize
EEC European Economic Community	No. number	V vib vibrasorber
eng engine	NS not supplied	W W watt
	NSS not sold separately	w/ with
		w/o without

CRR 40-300

Contents

Name	Grid	Page
CRR 40-300 REFERENCE SHEET.....	.6U68.....	.3
AIR VENT (40 FT CONTAINERS).....	.143D7.....	.35
DEFROST DRAIN.....	.143D10.....	.43
HIGH VOLTAGE TRAY.....	.146D7.....	.31
SOLENOID VALVE.....	.146E5.....	.15
NAMEPLATES.....	.150G11.....	.45
KVQ VALVE.....	.151A5.....	.17
CONTROL BOX DOOR (mPC 3000 w/ RMM).....	.157D7.....	.29
EVAPORATOR FAN GROUP.....	.158H9.....	.7
ELECTRICAL COMPONENTS.....	.160G1.....	.21
CONTROL BOX (HEATER WIRING INSIDE BOX).....	.160G2.....	.25
USDA DOWNLOAD PANEL.....	.165C0.....	.33
EVAPORATOR PANELS (2 FAN UNITS).....	.165C2.....	.41
CONDENSER COMPONENTS (3 FANS).....	.165C3.....	.37
REFRIGERATION COMPONENTS (DANFOSS VALVES).....	.165C8.....	.9
COMPRESSOR GROUP.....	.165C9.....	.13
LIQUID INJECTION VALVE.....	.166F6.....	.19
CONDENSER FAN GROUP.....	.166H3.....	.5



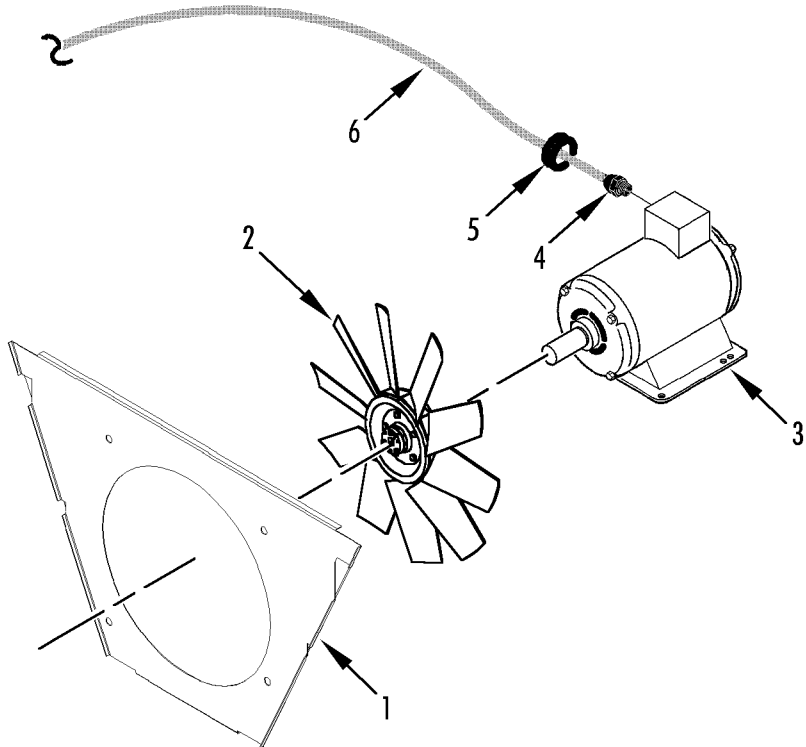
Revised
1/15/01

CRR 40-300 REFERENCE SHEET



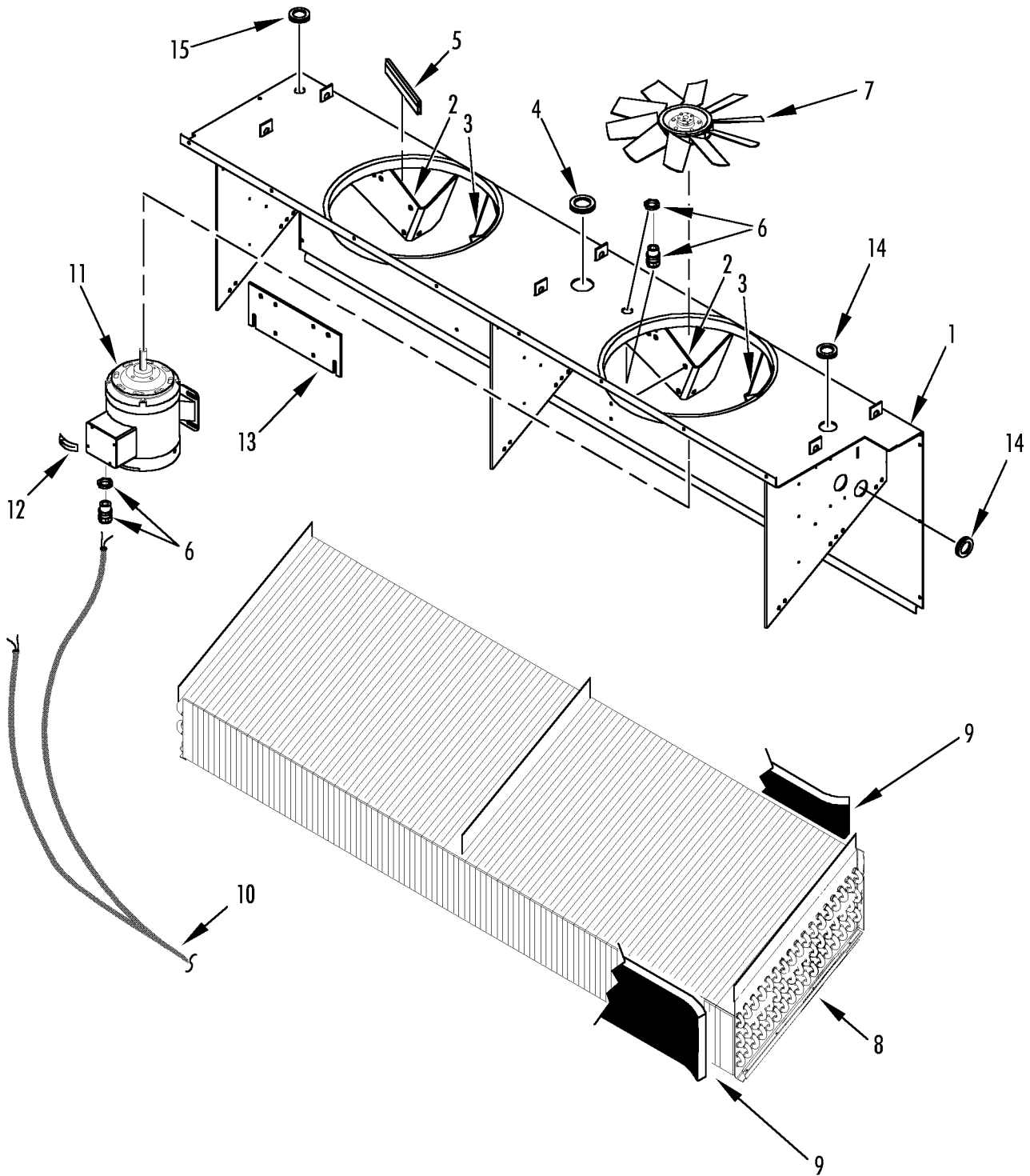
6U68

B/M	DESCRIPTION	Date
098300	CRR40-300	1/01



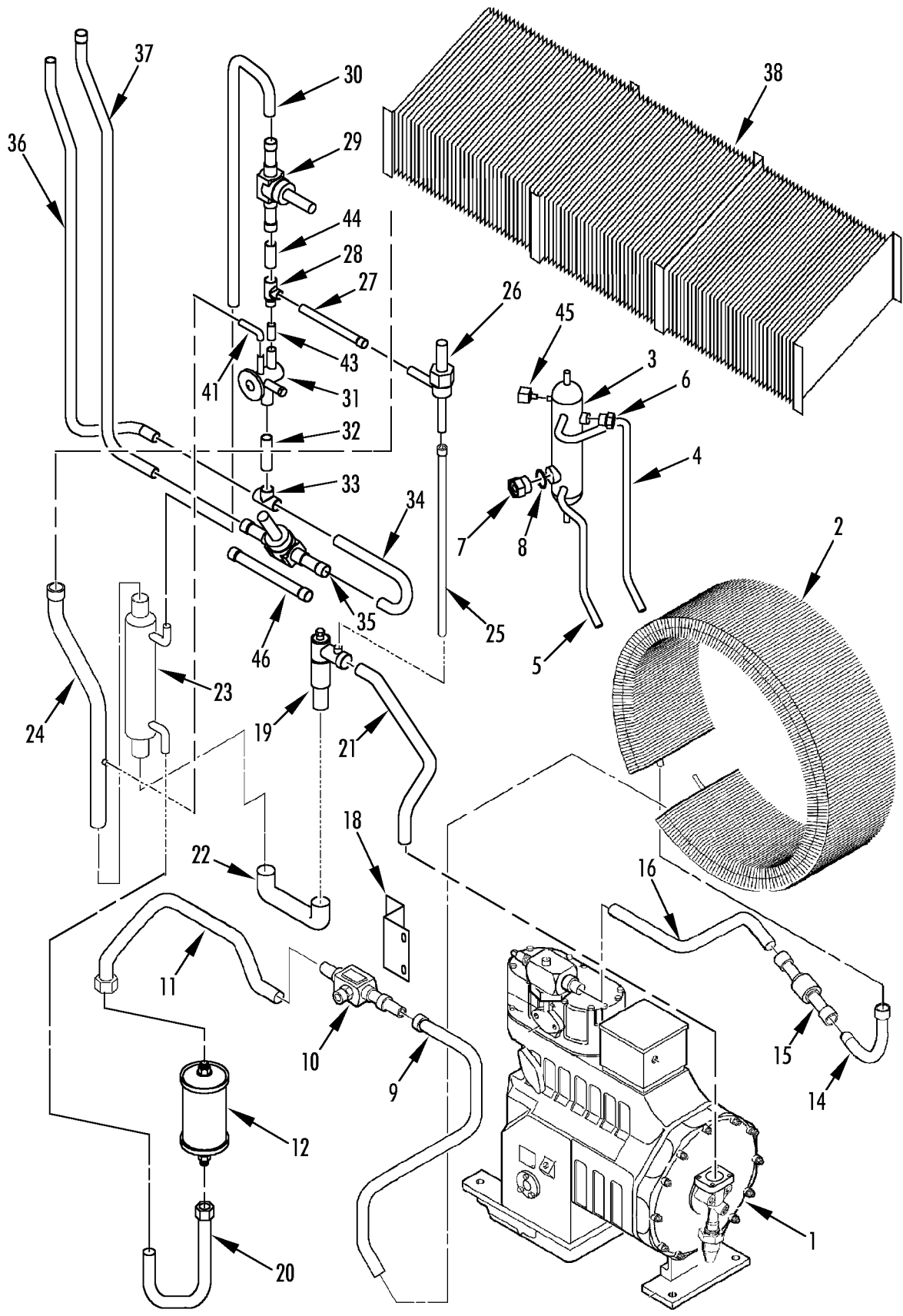


REF	PART#	DESCRIPTION	QTY
1	91-9912	ORIFICE - condenser fan	1
	55-7035	SCREW - orifice	4
	55-3045	WASHER - dome	4
	55-6997	NUT - captive	4
2	78-1173	FAN - condenser	1
3	104-689	MOTOR - condenser fan	1
	55-6993	SCREW - motor	4
	55-6988	WASHER	8
	55-8882	WASHER (nylon)	8
	55-9380	NUT	4
4	55-8907	FITTING - gland	1
	55-8908	NUT - fitting	1
5	33-2954	GROMMET - harness	1
6	41-2953	HARNESS - condenser fan	1



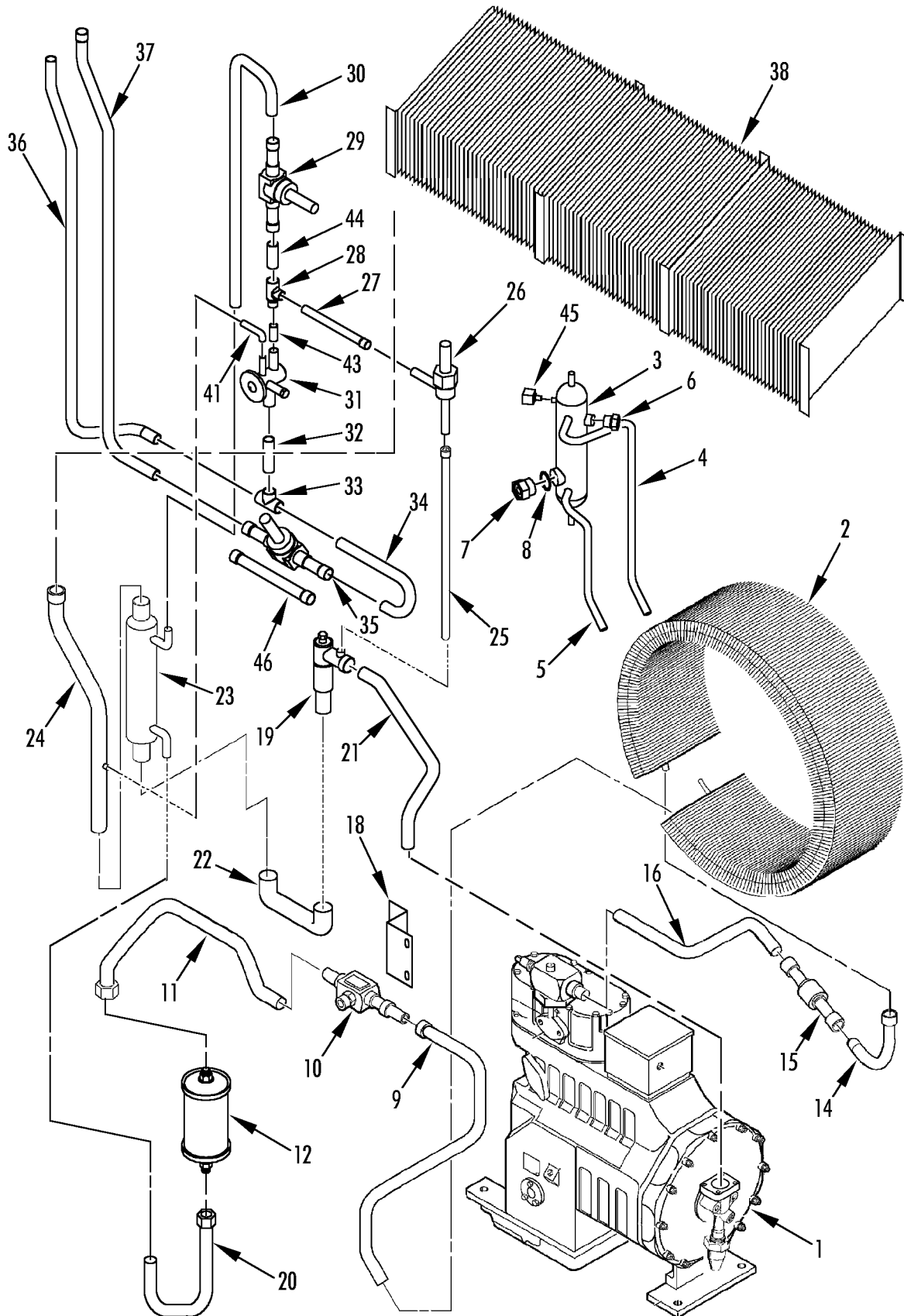


REF	PART#	DESCRIPTION	QTY
1	98-5768	HOUSING - evaporator	1
2	92-2331	• BRACKET - left	2
3	92-2332	• BRACKET - right	2
	55-9162	RIVET - shroud	12
4	33-3215	GROMMET (47 mm)	1
5	33-3044	TRIM - edge guard	A/R
6	55-8907	CONNECTOR - harness & sensor	3
	55-8908	NUT	3
7	78-1117	FAN - evaporator	2
8	67-1673	COIL - evaporator	1
	55-8891	SCREW - coil	9
	55-9217	CAP - screw	8
9	91-9328	BLOCK - coil	2
10	41-3685	HARNESS - fan	1
	41-3849	HARNESS - fan (w/ optional humidity)	1
11	104-691	MOTOR - fan	2
	55-6993	SCREW - motor	16
	55-7066	LOCKWASHER (external tooth)	2
	55-7342	LOCKWASHER	4
	55-7085	FLATWASHER	16
	92-425	NUTSTRIP - motor	4
12	99-4931	NAMEPLATE - arrow	1
13	91-8466	BRACKET - motor	2
	55-8903	SCREW - bracket	8
	55-7085	FLATWASHER	8
	55-7342	LOCKWASHER	8
	55-7339	NUT	8
14	33-2946	GROMMET (37 mm)	6
15	33-3838	GROMMET (22 mm)	1



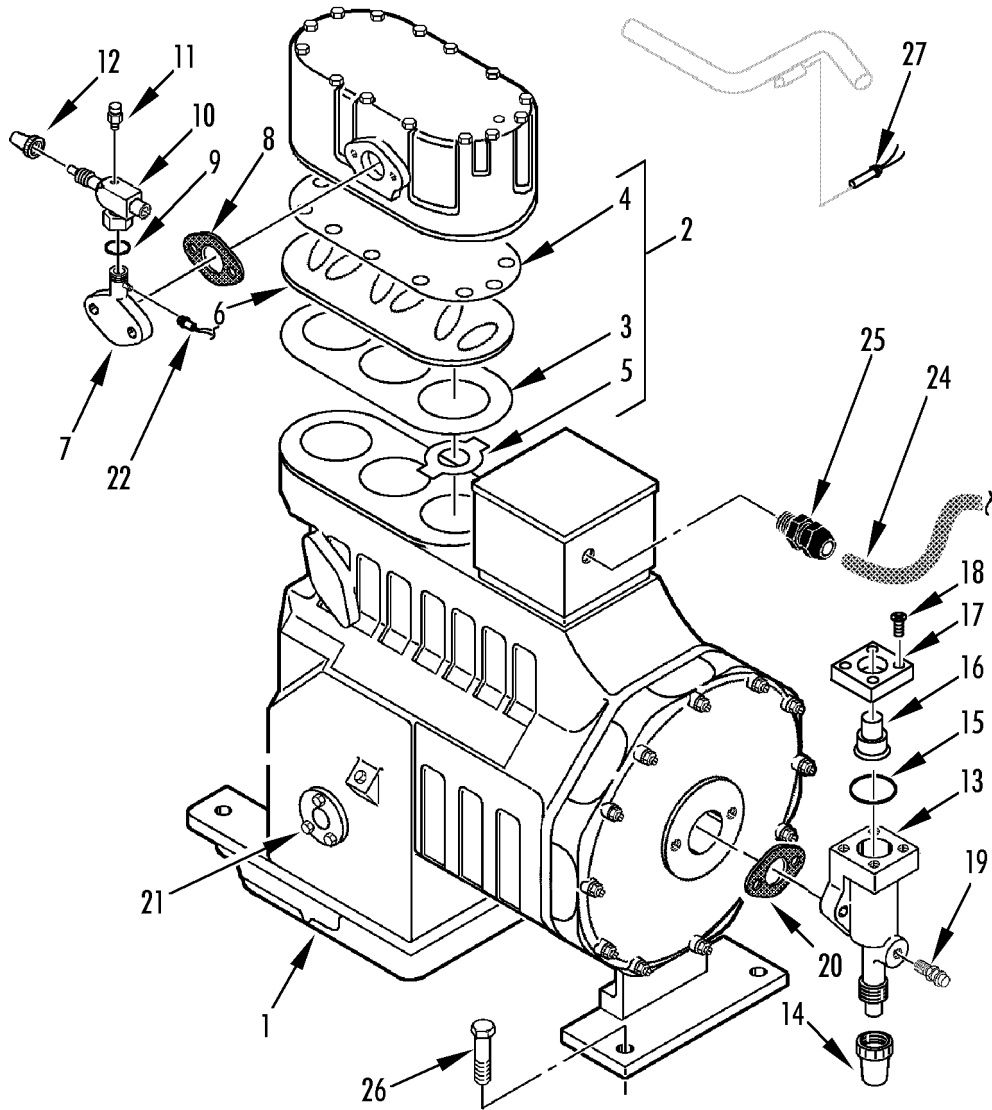


REF	PART#	DESCRIPTION	QTY
1	8102-743	COMPRESSOR (CRR 40, see 165C9)	1
2	67-1800	COIL - condenser	1
	33-2949	GASKET - coil	A/R
	55-8910	SCREW - coil	7
	55-6995	FLATWASHER	7
	55-9054	WASHER (nylon)	7
3	67-1726	TANK - receiver	1
4	66-9893	TUBE - condenser to receiver	1
5	66-9894	TUBE - receiver to condenser	1
6	506-364	PLUG - fusible	1
7	66-8811	SIGHT GLASS	1
8	33-3007	GASKET	1
9	506-375	TUBE - condenser to indicator	1
10	66-9125	VALVE - shutoff	1
	509-1635	BRACKET - hand valve	1
	55-7843	SCREW - valve	2
	505-603	WASHER	2
11	61-695	TUBE - indicator to drier	1
12	66-9015	DEHYDRATOR	1
	55-4390	HANGER - dehydrator	1
	91-8620	LABEL - dehydrator	1
13	55-8938	CLAMP - dehydrator	1
	55-8891	SCREW - bracket	2
14	506-369	TUBE - discharge	1
15	66-8467	VALVE - check	1
16	506-370	TUBE - discharge	1
17	Not Used		
18	509-1635	BRACKET - valve	1
	55-8891	SCREW - bracket	2
19	66-9163	KVQ - actuator (see 151A5)	1
20	61-696	TUBE - heat exchanger to dehydrator	1
	55-8951	• SHOULDER - seal	1
	55-8950	• NUT - shoulder	1
21	61-697	TUBE - KVQ to compressor	1
22	61-726	TUBE - exchanger to KVQ	1
23	67-1650	HEAT EXCHANGER	1
24	61-728	TUBE - evaporator to exchanger	1
25	61-727	TUBE - solenoid to KVQ	1
26	66-9168	VALVE - solenoid (less coil, pulse)	1
	41-5460	COIL (24V)	1
27	66-9868	TUBE - valve to tee	1
28	55-6218	TEE	1





REF	PART#	DESCRIPTION	QTY
29	66-9167	VALVE - solenoid (less coil, normally closed)	1
	41-5460	COIL (24V)	1
30	61-725	TUBE - valve to exchanger	1
31	66-9900	VALVE - expansion	1
32	66-9165	TUBE - valve to tee	1
33	55-2296	TEE	1
34	66-9868	TUBE - tee to valve	1
35	66-9032	VALVE - solenoid (less coil, dehumidifier)	1
	41-5460	COIL (24V)	1
36	61-723	TUBE - valve to coil	1
37	61-724	TUBE - tee to coil	1
38	67-1558	COIL - evaporator (sse 152C1)	1
41	66-9075	TUBE - equalizer	1
	Not Used		
43	66-9164	TUBE - tee to valve	1
44	66-9035	TUBE	1
45	66-6610	ADAPTER - service	1
	66-7182	• CAP - adapter	1
46	66-9062	TUBE - valve replacement	1

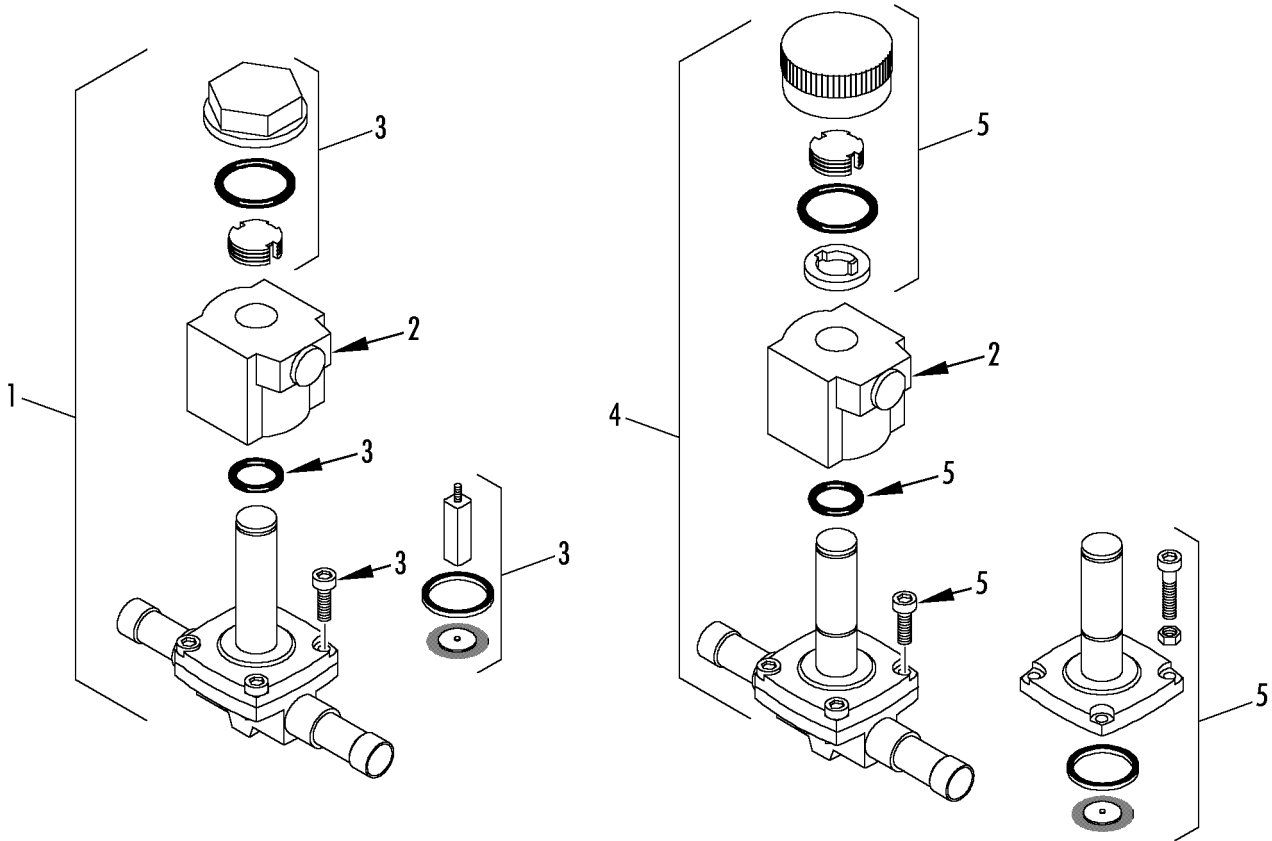




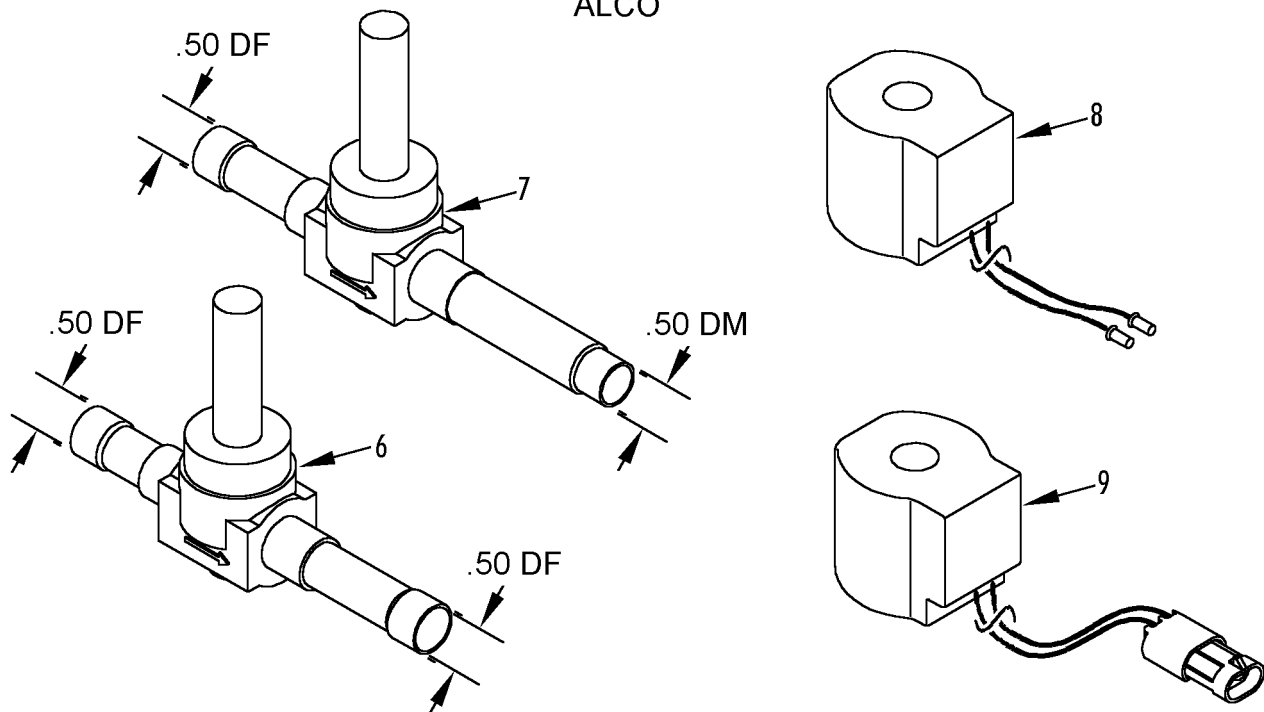
REF	PART#	DESCRIPTION	QTY
1	8102-743	COMPRESSOR (3DSTA)	1
2	N/A	• KIT - valve plate	1
3	33-2510	•• GASKET - valve plate	1
4	33-2218	•• GASKET - cylinder head	1
5	N/A	•• KIT - reed suction	1
6	N/A	• KIT - valve plate	1
	203-516	OIL - compressor	A/R
7	22-1186	ADAPTER - discharge	1
	55-2747	SCREW - adapter	2
	55-2159	LOCKWASHER	2
	55-2173	FLATWASHER	2
8	33-2175	GASKET - discharge	1
9	33-981	GASKET - valve	1
10	66-9377	VALVE - discharge	1
11	66-6610	ADAPTER - service (discharge)	1
	66-7182	• CAP - adapter (red)	1
12	506-161	CAP - discharge valve	1
13	66-9149	VALVE - suction	1
14	506-165	CAP - suction valve	1
15	503-230	GASKET - suction	1
16	66-1845	COUPLING	1
17	66-2457	COLLAR	1
18	55-3490	SCREW - collar	4
19	66-6607	FITTING - service (lowside)	1
	66-7183	• CAP - fitting	1
20	33-2548	GASKET - suction	1
21	22-398	SIGHT GLASS - oil	1
	33-2223	GASKET - sight glass	1
22	41-3302	SWITCH - hpc0	1
23	Not Used		
24	41-2716	CABLE - compressor power	1
25	55-5257	FITTING - harness	1
26	55-9037	SCREW - compressor (50 mm)	4
	55-7360	FLATWASHER	4
	55-5025	NUT	4
27	41-3594	PROBE - high temperature (see note)	1

NOTE: Sensor #27 41-3594 slides into a temperature tube attached to the discharge tube.

DANFOSS

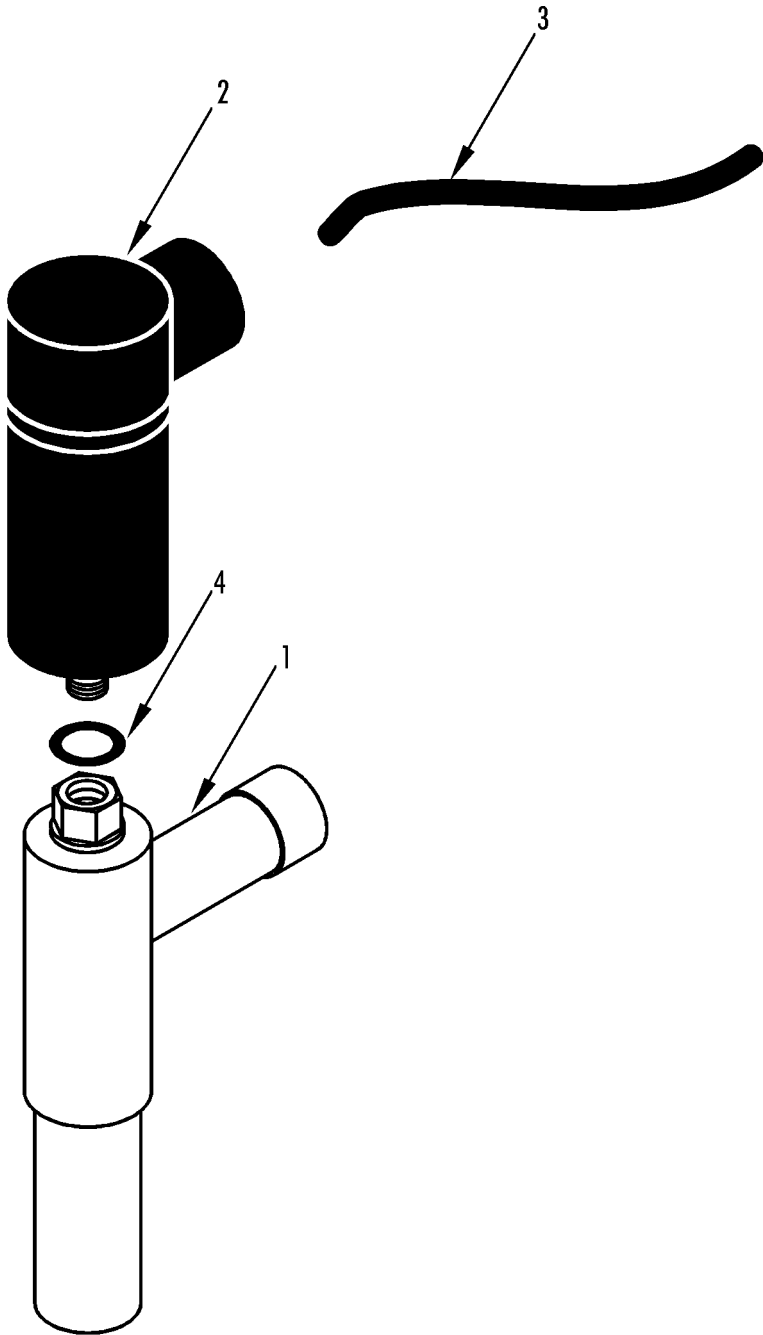


ALCO





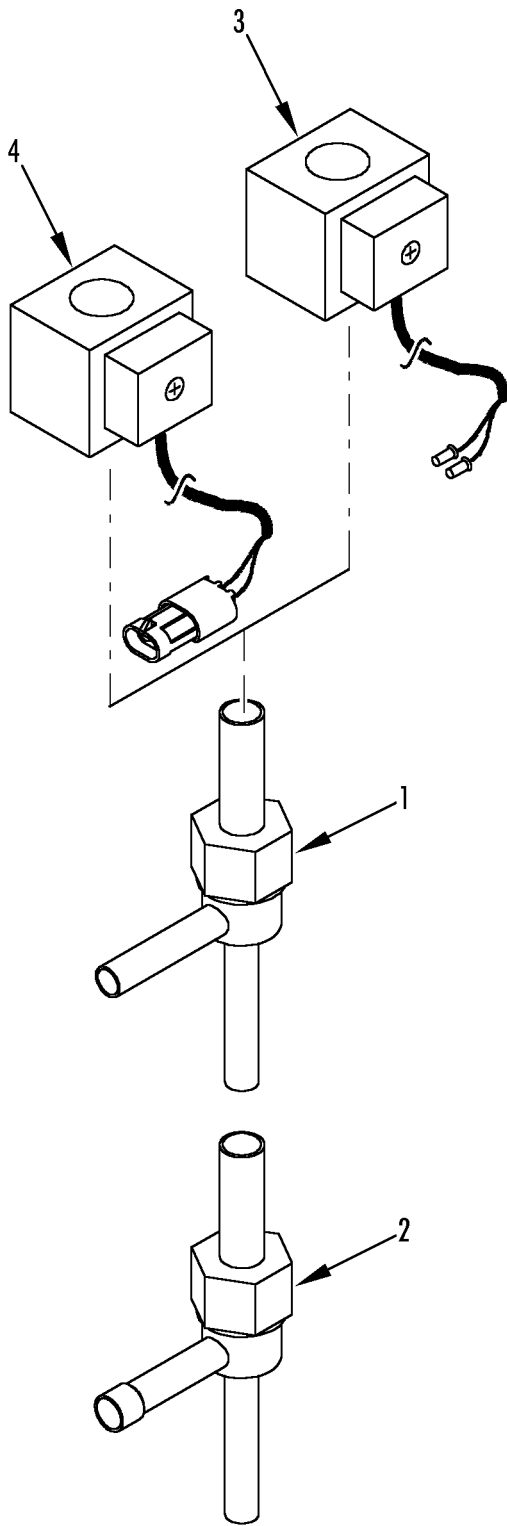
REF	PART#	DESCRIPTION	QTY
1	66-9167	VALVE - liquid line (less coil, normally closed, Danfoss)	1
2	41-5460	COIL - valve	1
	41-2399	COIL - valve (2 pin connector, gray, Danfoss)	1
3	504-977	KIT - repair (normally closed)	1
4	66-9032	VALVE - dehumidifier (less coil, normally open, Danfoss)	1
5	504-922	KIT - repair (normally open)	1
6	41-3303	VALVE - dehumidifier (less coil, normally open, Alco)	1
	66-9867	VALVE - liquid line (less coil, normally closed, Alco)	1
7	61-149	VALVE - liquid line (less coil, normally closed, Alco)	1
8	41-3301	COIL - valve (2.2 meter leads)	1
	41-3301	COIL - valve (2.2 meter leads w/ pin terminals)	1
9	41-3592	COIL - valve (200 mm leads w/ pin connector, white band)	1
	40-782	COIL - valve (200 mm leads w/ pin connectors, green band)	1



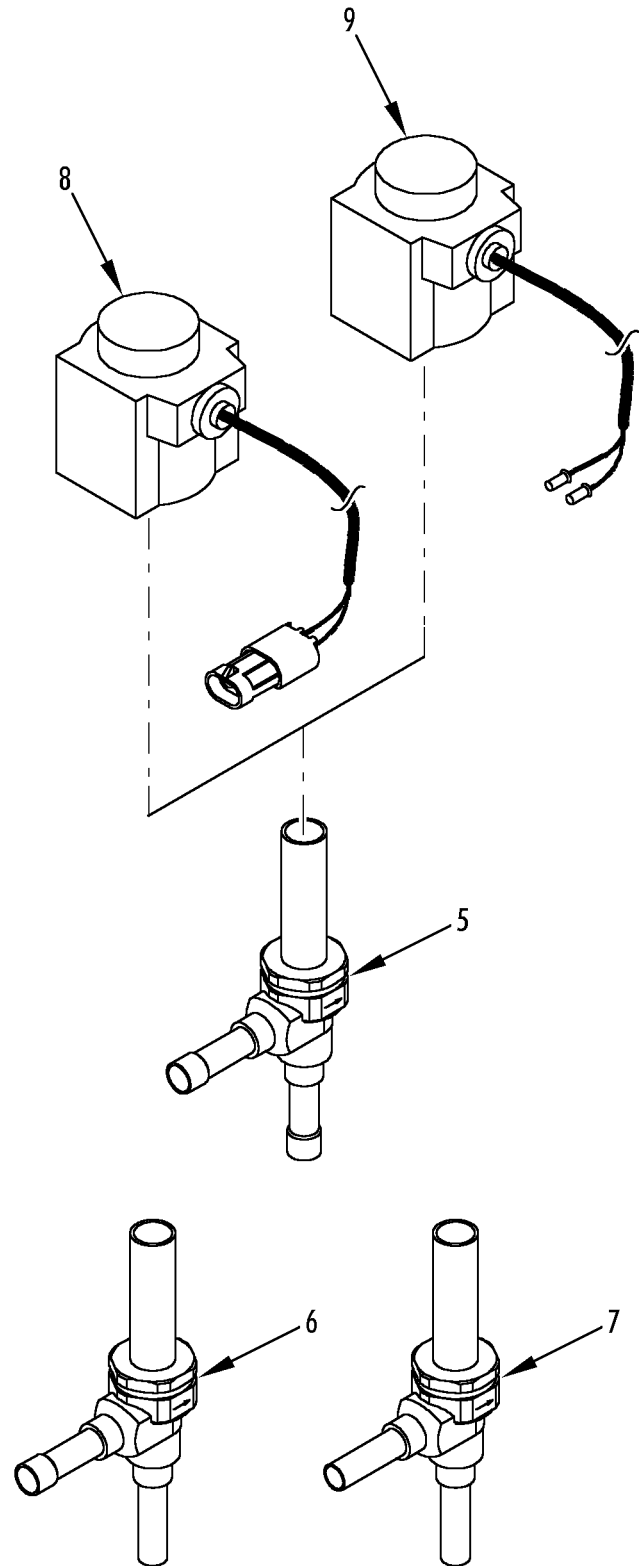


REF	PART#	DESCRIPTION	QTY
1	66-9163	VALVE - KVQ	1
2	504-980	• ACTUATOR	1
3	41-2603	• HARNESS (before 10/02)	1
	41-5420	• HARNESS (after 9/02)	1
4	503-291	GASKET	1

ALCO

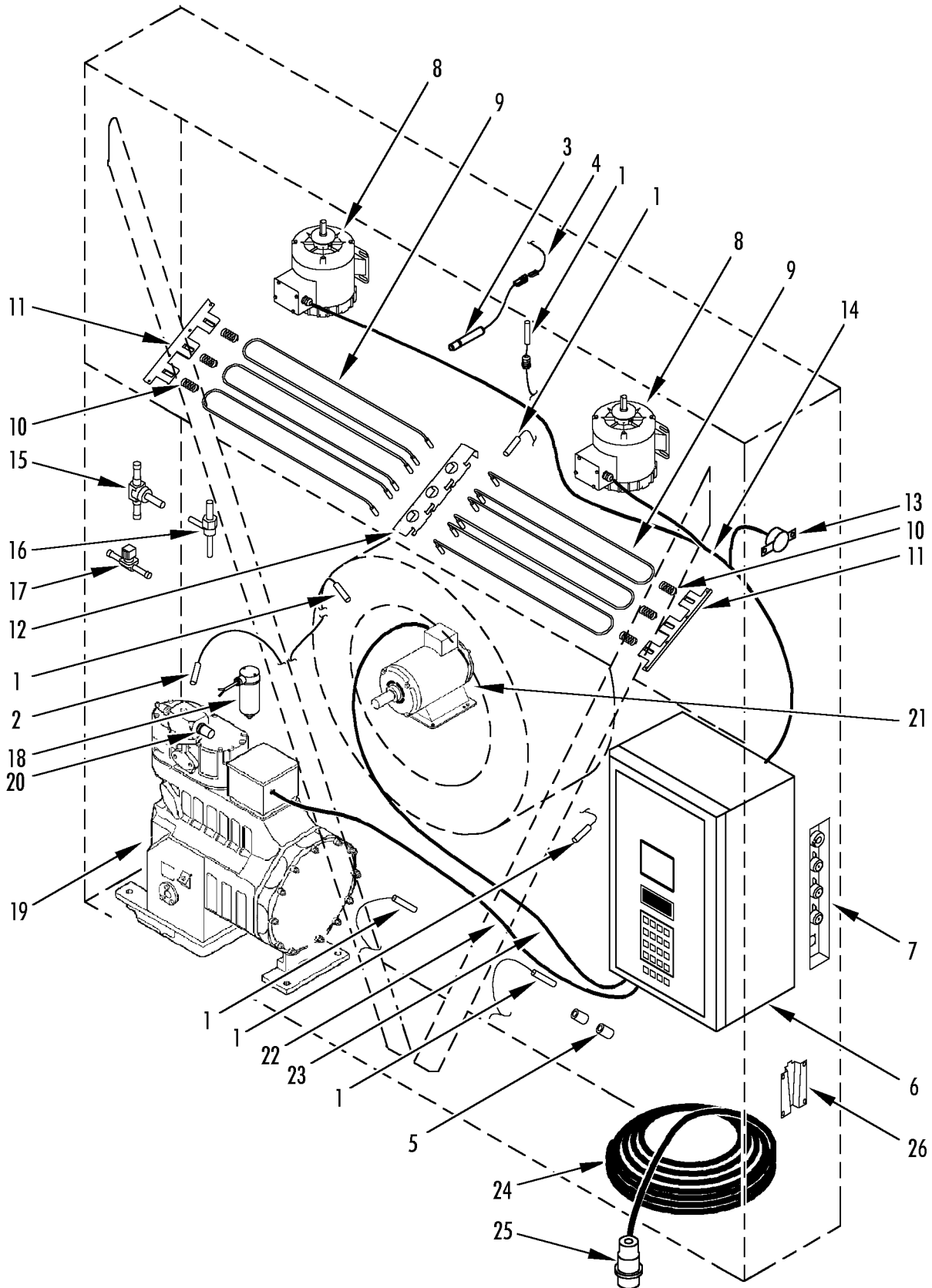


DANFOSS



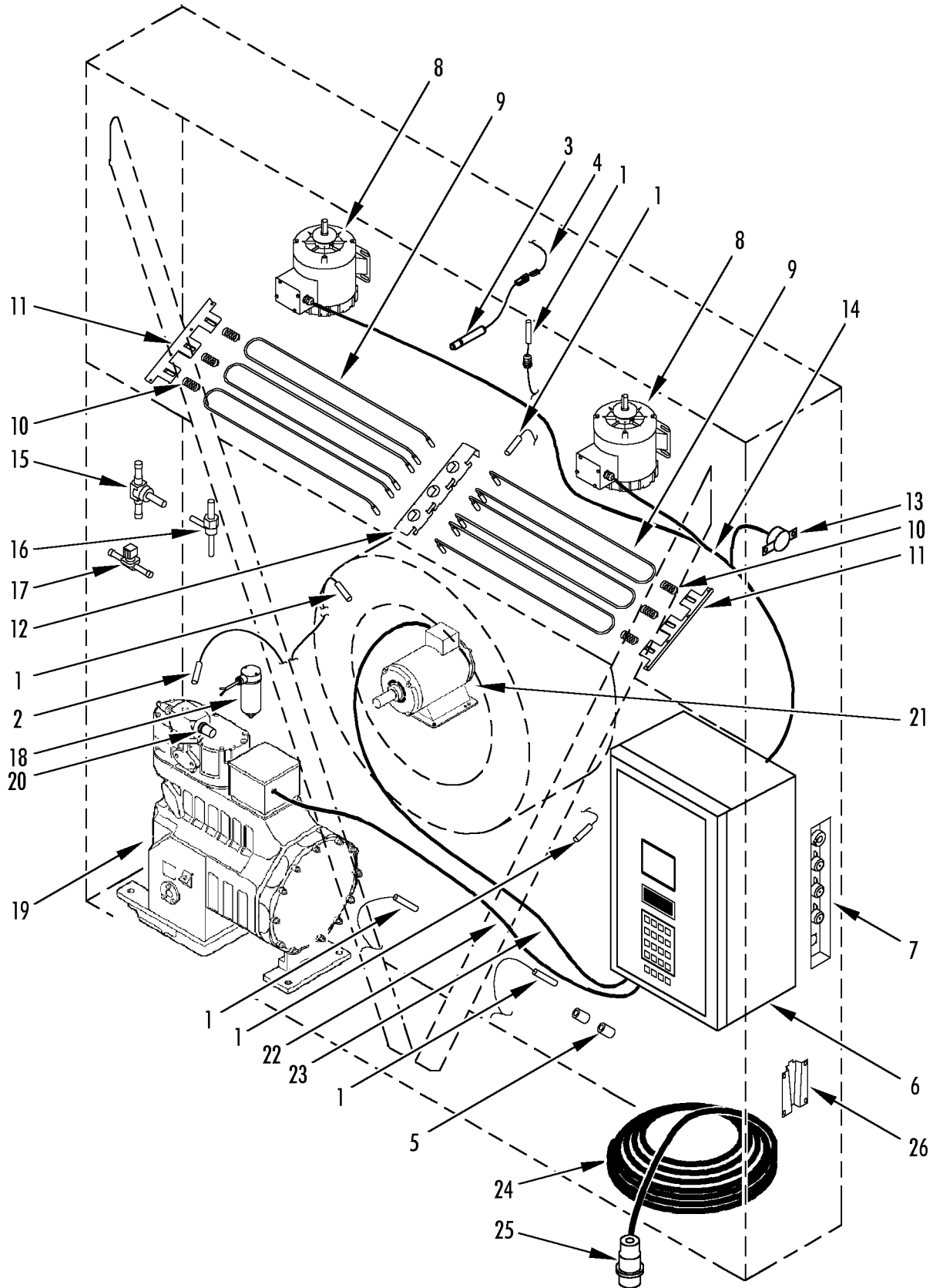


REF	PART#	DESCRIPTION	QTY
1	66-8367	VALVE - liquid injection (w/ coil, 24V, 0.034 orifice, Alco, use on mP-D units only)	1
	66-9866	VALVE - liquid injection (w/o coil, .034 orifice, Alco)	1
2	66-8721	VALVE - liquid injection (w/ coil, 24V, 0.075 orifice, Alco)	1
	66-9195	VALVE - liquid injection (w/ coil, 24V, 0.110 orifice, Alco)	1
	66-9953	VALVE - bypass (w/o coil, 0.110 orifice, Alco used on units w/ modulation valves)	1
	61-681	VALVE - bypass (w/o coil, 0.075 orifice, Alco used on units w/ stepper & modulation valves)	1
3	41-3301	COIL - valve (24V, 2.2 m leads, ALCO)	1
	41-3301	COIL - valve (24V, 2.2 m leads w/ pin terminals, ALCO)	1
4	41-3592	COIL - valve (24V, 200 mm leads w/ 2 pin connector, white, ALCO)	1
	40-782	COIL - valve (24V, 200 mm leads w/ 2 pin connector, green, ALCO)	1
5	66-9168	VALVE - liquid injection (w/o coil, Danfoss)	1
6	61-2351	VALVE - warm gas bypass (w/o coil, Danfoss)	1
7	61-2223	VALVE - liquid injection (CRR, w/o coil, Danfoss)	1
8	41-2399	COIL - liquid line valve (24V, w/ 2 pin connector, gray, Danfoss)	1
9	41-5460	COIL (24V, 2.2 meter leads, Danfoss)	1





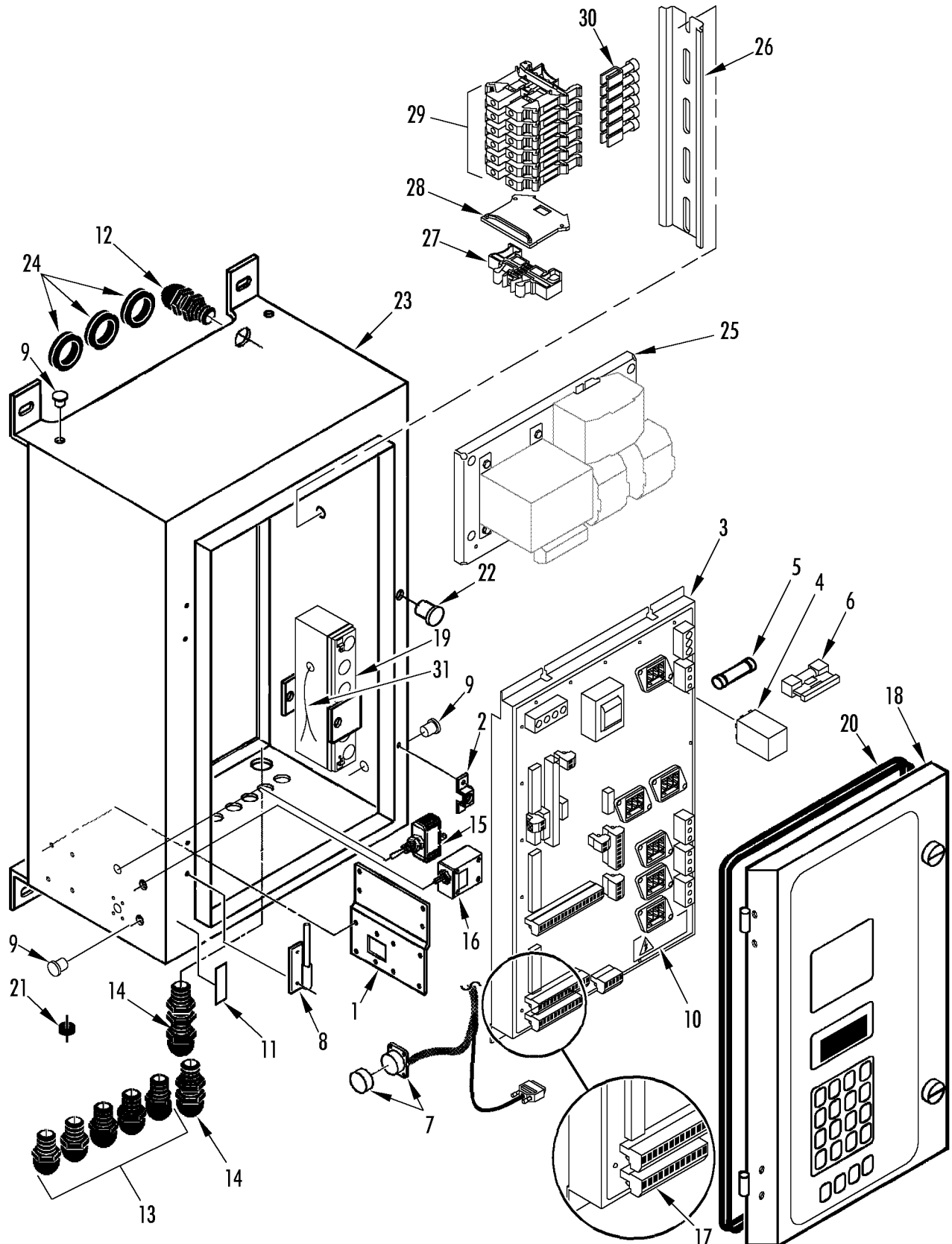
REF	PART#	DESCRIPTION	QTY
1	40-791	KIT - sensor (universal)	A/R
	51-270	CONNECTOR - liquid tite	1
2	41-4300	SENSOR - compressor	1
3	41-5635	SENSOR - humidity (see 147G12)	1
	41-5635	SENSOR - humidity (800E)	1
4	41-2838	HARNESS - sensor (humidity, see 147G12)	1
5	91-9754	POCKET - sensor	1
6	NSS	BOX - control (see 160G2 & 146D7)	1
7	NSS	PANEL - USDA receptacle (see 157H2, 185D6 & 158E2)	1
8	104-691	MOTOR - fan	2
	77-1498	• BEARING - shaft end	1
	77-1401	• BEARING - opposite end	1
9	45-1791	HEATER (680W, 600 mm leads)	6
	45-1927	HEATER (680W, 2 meter leads)	6
10	91-8140	SPRING - heater	6
11	91-8467	BRACKET - heater	2
12	91-8142	BRACKET - heater	1
13	41-3401	THERMOSTAT - defrost termination	1
14	41-3277	HARNESS - evaporator (800 & 800A)	1
	41-3685	HARNESS - evaporator (CRR 40-300)	1
	41-4018	HARNESS - evaporator fan (2 fan units w/o heater doors, 800B & CRR40)	1
15	66-9167	VALVE - solenoid (less coil, see 145E5)	1
	61-2228	VALVE - solenoid (800E)	1
16	66-9168	VALVE - liquid injection (less coil, see 166F6)	1
	61-2223	VALVE - solenoid, liquid injection (800E)	1
17	66-9032	VALVE - solenoid (less coil, dehumidity, see 147G12)	1
18	66-9163	VALVE - KVQ (see 151A5)	1
19	8102-743	COMPRESSOR (see 165C9 & 185E3)	1
20	41-3302	SWITCH - hpc0	1
21	104-689	MOTOR - condenser (see 155D4)	1
	77-1498	• BEARING - shaft end	1
	77-1401	• BEARING - opposite end	1
22	41-4015	CABLE - compressor	1
23	41-2953	HARNESS - condenser fan	1
24	45-1942	CABLE - power (22.3 meters, 73 ft)	1
	45-1992	CABLE - power (19.2 meters, 63 ft)	1
25	41-1976	• PLUG - power	1
26	92-270	BRACKET - cable restraint	1
	92-2777	BRACKET - power cable (800E & CRR40)	1
	55-9164	SCREW - cable	1
	55-7357	FLATWASHER	1





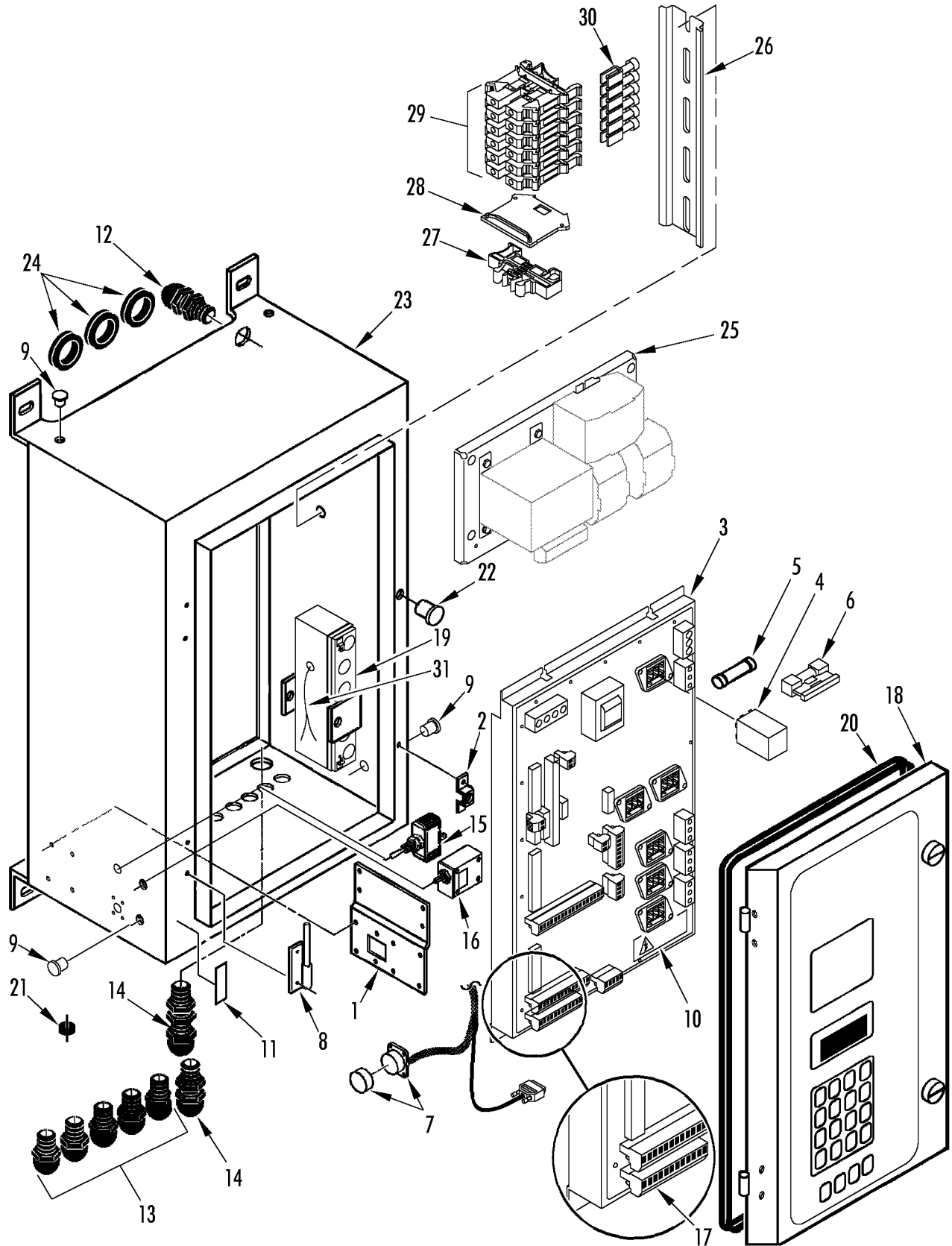
REF	PART#	DESCRIPTION	QTY
	55-7344	NUT	1
	55-7172	SCREW - bracket	4
	55-7075	FLATWASHER	4
	55-7170	LOCKWASHER	4

NOTE: Use Universal Sensor Kit 40-791 to repair all sensors except 41-3594, 41-4156 & 41-4300.



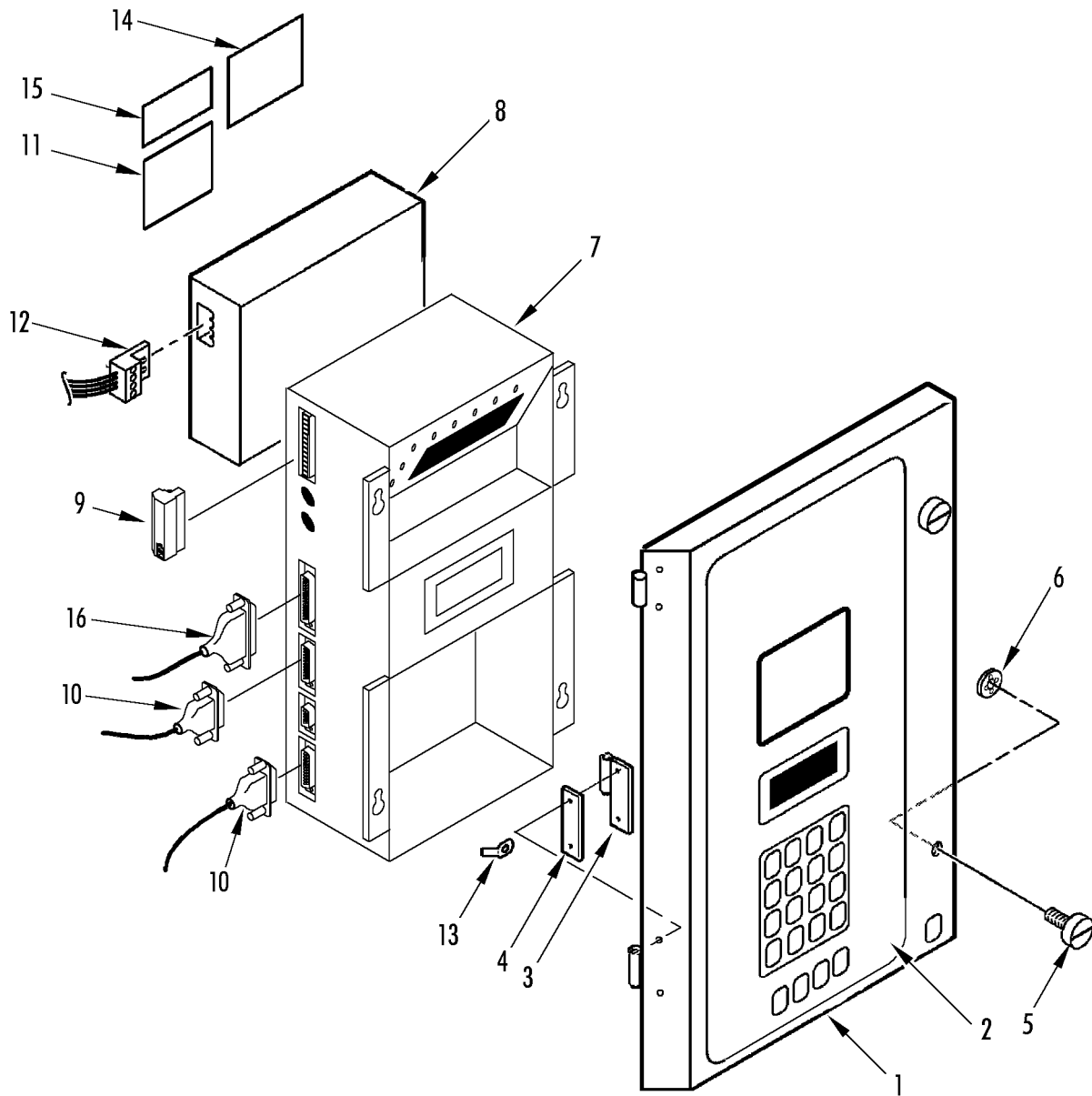


REF	PART#	DESCRIPTION	QTY
1	92-236	BRACKET - diagram	1
	55-3272	RIVET - bracket	4
2	92-237	BRACKET (w/ receptacle)	2
	55-2074	NUT - speed	1
	55-9166	SCREW - bracket	4
	55-9444	WASHER - insulating (nylon)	4
3	845-2834	BOARD - relay (MP3000)	1
	55-9166	SCREW - relay board	6
4	504-514	RELAY - power	6
	92-860	CLIP - relay	6
5	504-970	FUSE (20 amp)	3
6	41-3430	HOLDER - fuse	1
7	41-3402	CABLE - retriever plug	1
	55-3272	RIVET - plug	4
	505-416	CAP - plug	1
8	92-238	HINGE - cover	2
	55-7172	SCREW - hinge	4
	55-8877	WASHER (nylon)	4
	509-955	INSULATOR	2
	55-6995	WASHER	2
	505-566	LOCKWASHER	2
9	55-7042	NUT	4
	505-408	PLUG - seal	3
	91-9833	NAMEPLATE - Caution	1
	92-244	NAMEPLATE - on/off	1
12	55-5885	CONNECTOR - liquid tite	1
13	55-8907	FITTING - harness	5
14	55-5257	FITTING - harness	2
15	41-3595	SWITCH - unit on/off	1
	92-239	BOOT - switch	1
16	41-3276	BREAKER - circuit	1
	44-8688	BOOT - circuit breaker	1
	41-2832	CONNECTOR - plug (2 pin)	1
17	41-3596	BLOCK - terminal (4 pole)	1
	41-3597	BLOCK - terminal (5 pole)	1
	41-3598	BLOCK - terminal (8 pole)	1
	41-3851	BLOCK - terminal (12 pole)	1
	41-3599	BLOCK - terminal (14 pole)	1
	41-3608	BLOCK - terminal (18 pole)	1
18	NSS	DOOR - controller (see 158D7)	1
19	203-509	BATTERY (12V, 1.9 AH)	1
20	33-3043	GASKET - cover	1



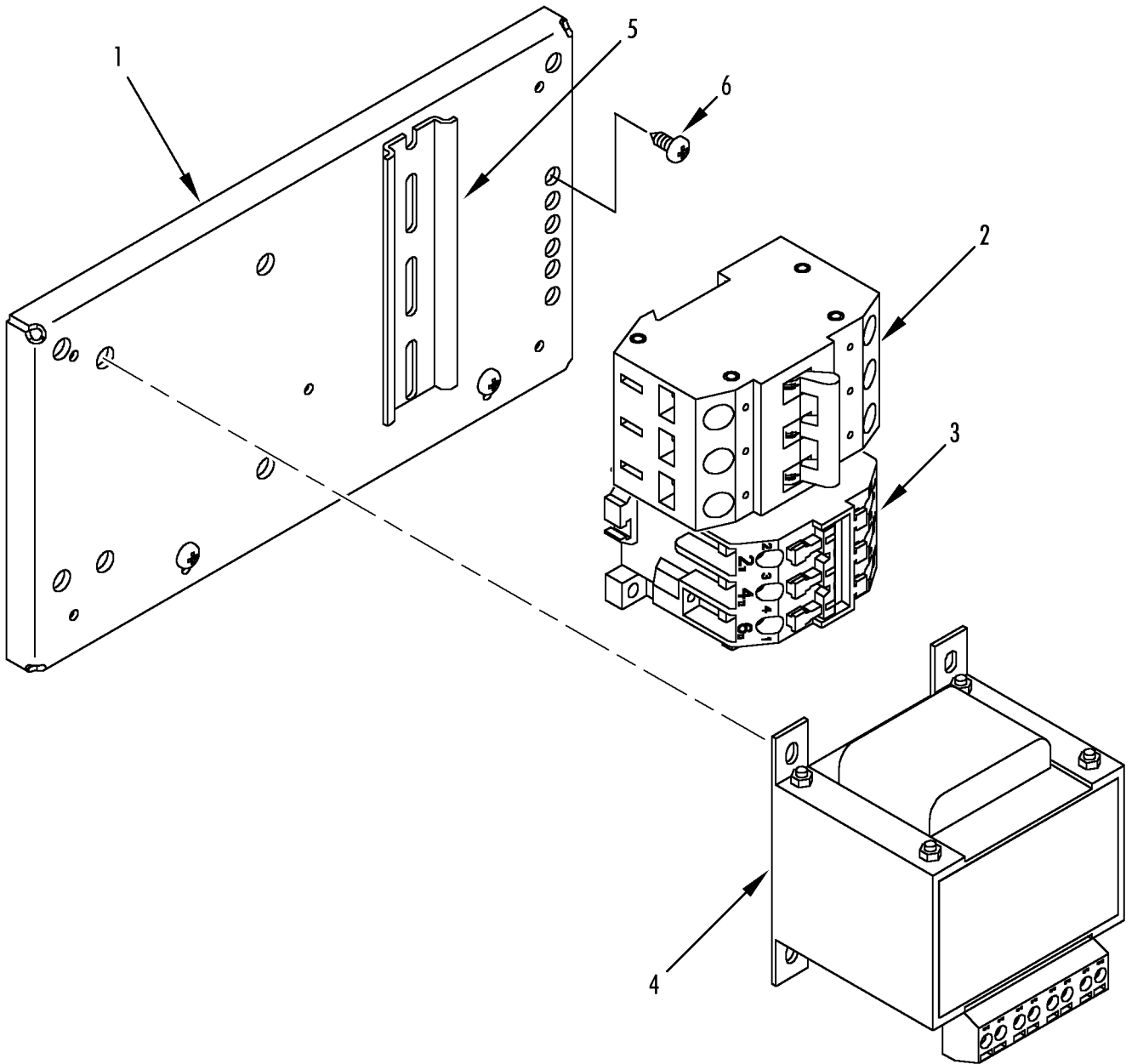


REF	PART#	DESCRIPTION	QTY
21	33-3838	GROMMET	1
22	55-9401	PLUG - seal	3
23	98-5454	BOX - control	1
	55-6994	SCREW - control box	4
	55-7075	FLATWASHER	4
	55-9054	WASHER - insulator	4
24	33-3215	GROMMET	3
25	NSS	TRAY - high voltage (see 158A1 or 146D7)	1
26	309-3066	RAIL - terminal block	1
	55-7169	SCREW - rail	2
	55-7033	FLATWASHER	2
	55-9445	WASHER - insulator	2
	55-7034	NUT	2
27	41-3687	TERMINAL - stop clip	2
28	41-3702	PLATE - end terminal	1
29	41-3688	BLOCK - terminal (UK, heaters)	6
30	41-3703	CONNECTOR - cross	1
31	41-3335	CABLE - battery	1



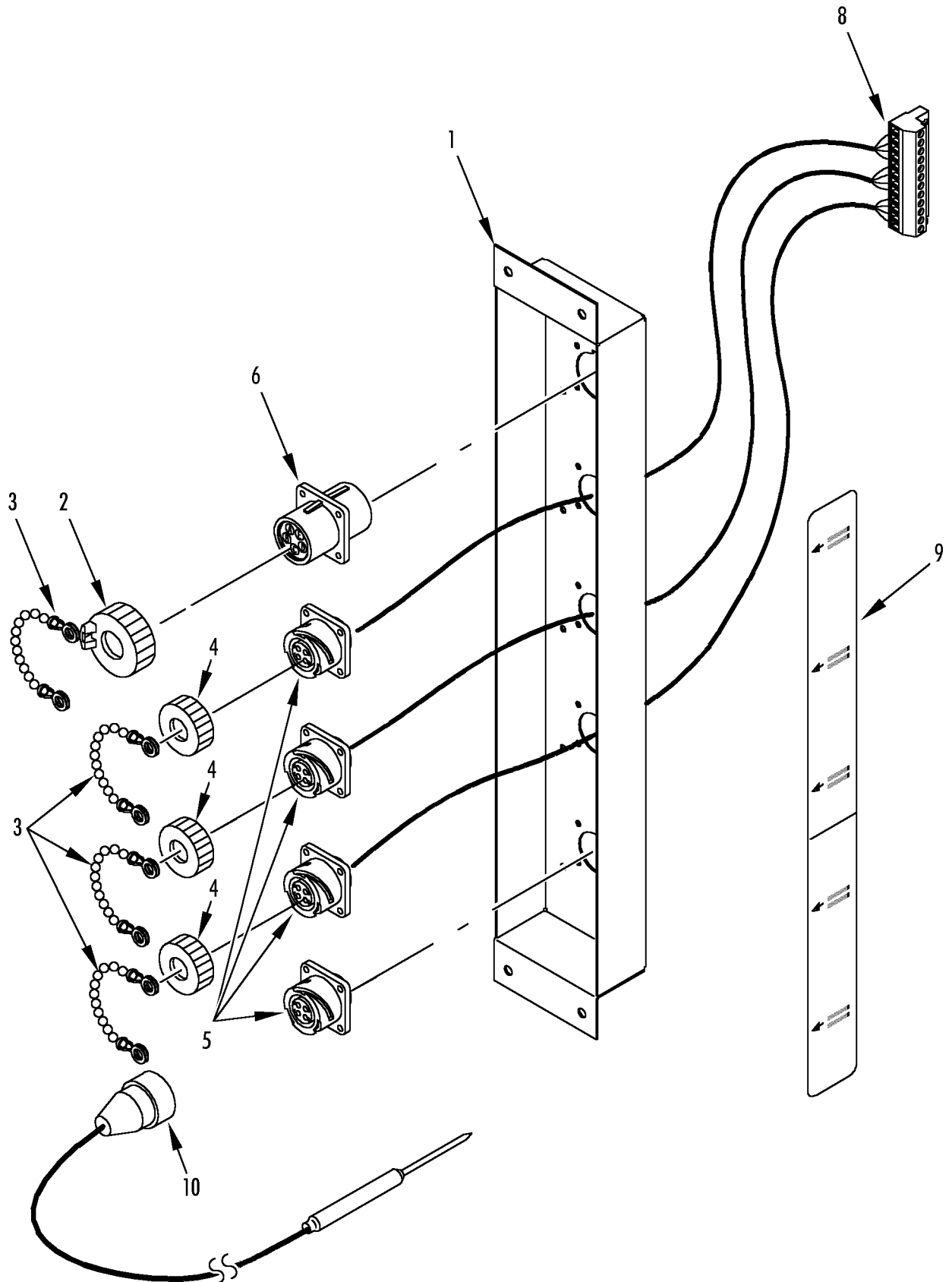


REF	PART#	DESCRIPTION	QTY
1	91-9380	DOOR - control box	1
2	41-4142	KEYPAD (MP3000)	1
3	91-9381	HINGE - door	2
	55-7407	SCREW - hinge	4
	55-9444	WASHER (nylon)	4
	55-7033	WASHER	8
	55-7034	NUT	4
4	55-9392	INSULATOR - hinge	2
5	55-9393	SCREW - door	2
6	55-8919	RETAINER - screw	2
7	845-1909	CONTROLLER (MP3000)	1
	55-7034	NUT - controller	4
	55-8919	LOCKWASHER	2
	55-9444	WASHER - insulating (nylon)	4
8	845-1898	MODEM - RMM (option 098158, 098159)	1
9	41-3335	CONNECTOR (7 pin)	1
10	41-3602	CABLE - connecting (25 pin, No. 1 & 3)	2
11	91-9976	NAMEPLATE - Relay Board	1
12	41-3603	CABLE - connecting (RMM, option 098158, 098159)	1
13	55-9395	ADAPTER - push-on	1
	505-511	NUT	1
14	91-9382	NAMEPLATE - Controller Warning	1
15	91-9383	NAMEPLATE - Phase Select	1
16	41-2835	CABLE - connecting (No. 2)	1



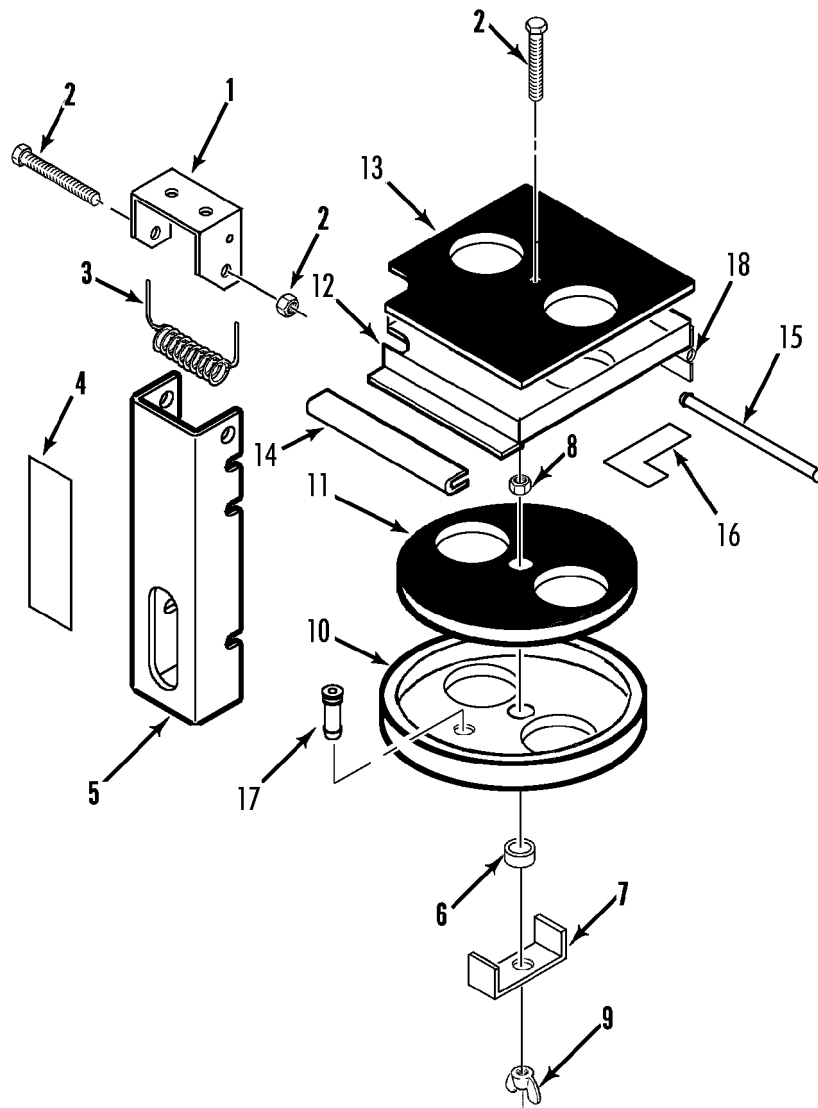


REF	PART#	DESCRIPTION	QTY
1	91-9913	PLATE - bottom	1
	55-7372	SCREW - plate to box	4
	51-619	WASHER - insulator	4
	55-7075	FLATWASHER	4
	55-7378	LOCKWASHER (internal tooth)	4
	55-7042	NUT	4
2	41-5104	BREAKER - circuit (25 amp)	1
3	41-3605	CONTACTOR (CI 25)	1
4	41-3317	TRANSFORMER	1
	55-9396	SCREW - transformer	4
5	91-9273	RAIL - din	1
	55-7404	LOCKWASHER	6
6	55-9166	SCREW (pan hd)	9



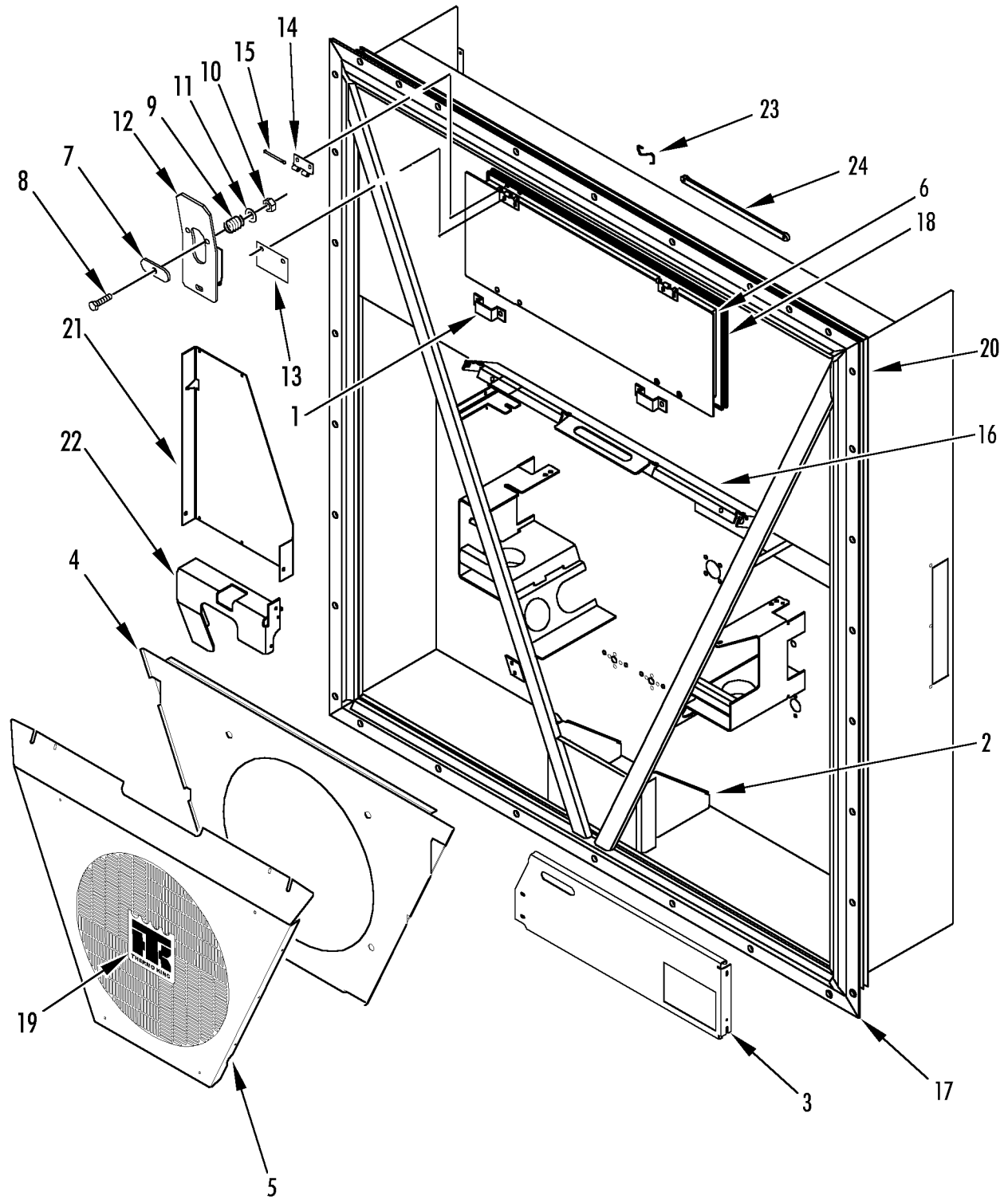


REF	PART#	DESCRIPTION	QTY
1	91-8645	PANEL - USDA receptacle	1
	55-7713	RIVET - panel	4
2	41-2406	CAP - dust	1
3	99-3685	CHAIN - cap	5
4	41-890	CAP - dust	4
	55-9323	RIVET - cap	4
5	41-4016	RECEPTACLE (4 pin)	4
	55-2270	RIVET - receptacle	16
	55-8410	FLATWASHER	16
6	41-2405	CONNECTOR - receptacle (5 pin)	1
	55-2265	RIVET - receptacle	5
	55-7697	FLATWASHER	5
8	41-3585	CONNECTOR - plug (12 pin)	1
9	92-243	NAMEPLATE - data download USDA	1
10	41-3107	SENSOR - thermistor (USDA)	4



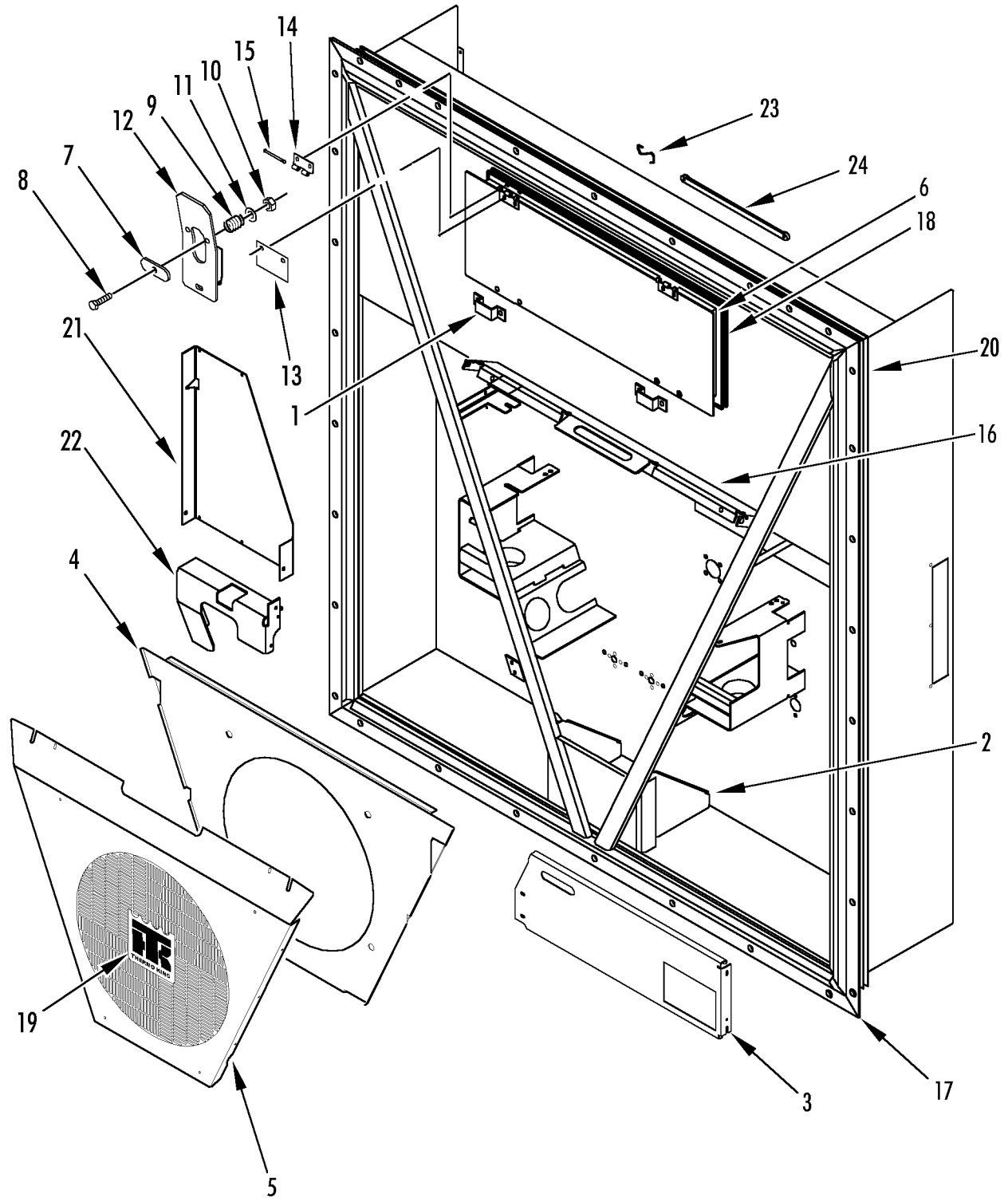


REF	PART#	DESCRIPTION	QTY
	91-8252	VENT - air (complete)	1
1	91-9048	• BRACKET - air vent handle	1
2	51-1426	• SCREW - handle	1
	51-1474	• SCREW (M8 x 1.25 x 65, ss)	1
	55-9541	• WASHER (nylon)	4
	51-1427	• NUT	1
3	91-8100	• SPRING	1
4	92-440	• NAMEPLATE - Do Not Open Below 0 C	1
5	91-8102	• HANDLE - air vent	1
6	77-2467	• BEARING - slide	1
7	91-8104	• BRACKET - handle	1
8	51-1428	• NUT	2
	51-1429	• LOCKWASHER	1
	51-1430	• FLATWASHER	1
9	51-1431	• NUT - wing	1
10	91-8103	DISK - air vent	1
11	33-4255	• GASKET - air vent	1
12	91-8105	• PLATE - air vent	1
	55-7172	• SCREW - plate	4
	55-7075	• FLATWASHER	4
	55-9541	• WASHER (nylon)	4
13	33-2944	• GASKET - air vent	1
14	91-8663	• PROTECTOR - edge	1
15	91-8106	• PIN - hinge	1
16	91-8107	• NAMEPLATE - Do Not Open Below 0 C	1
17	55-9168	• ADAPTER - hose	1
18	92-411	• HINGE - air vent	1
	51-619	SCREW - vent	8
	55-8933	WASHER - insulator (6.4 id)	4
	55-7075	FLATWASHER	4
	55-9054	WASHER - insulator (8.4 id)	6
	51-167	FLATWASHER	6
	55-7339	NUT	6



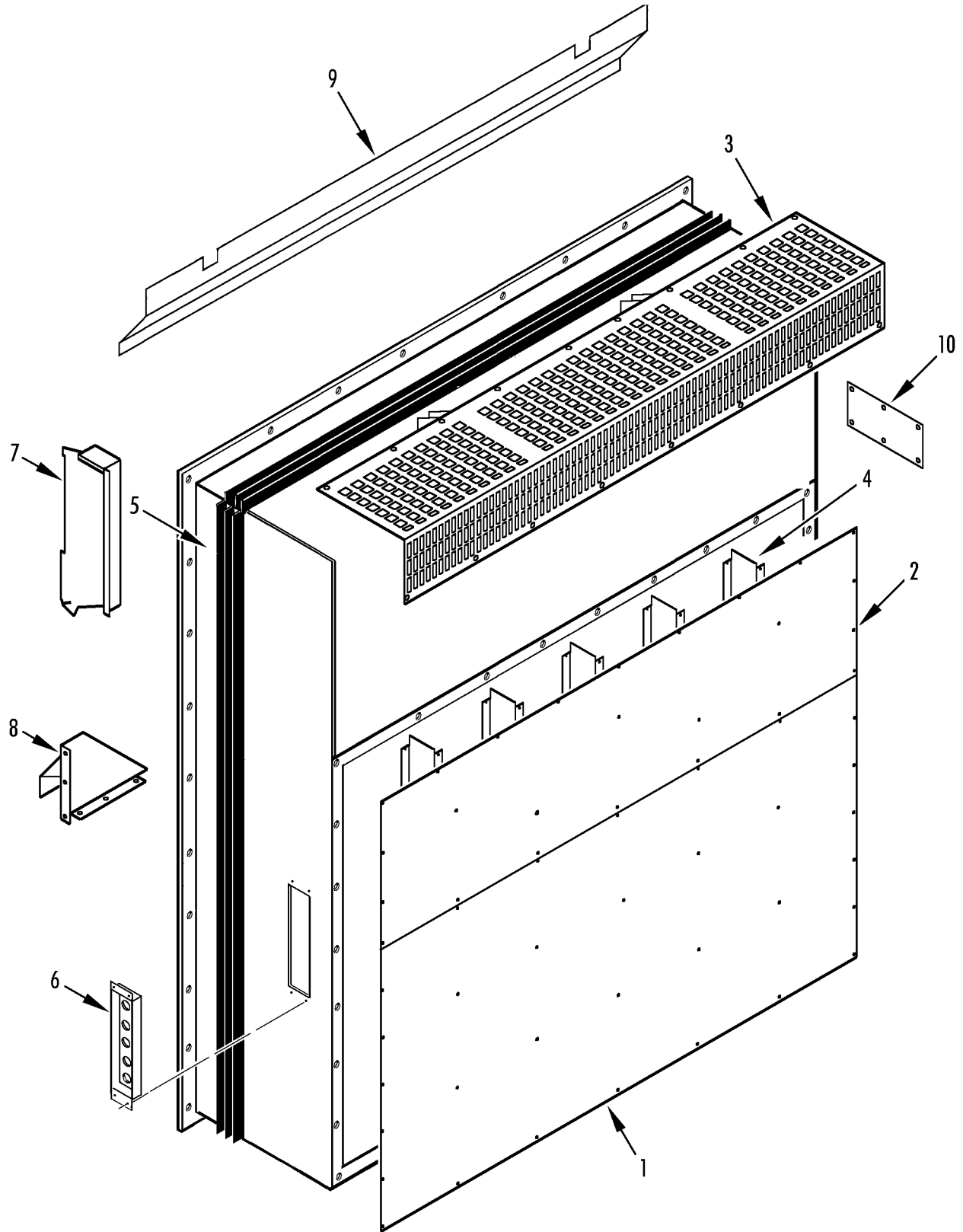


REF	PART#	DESCRIPTION	QTY
1	91-8195	KEEPER - door latch	2
	55-9312	SCREW - keeper (TIR seal)	4
	55-6995	FLATWASHER	4
	55-9054	WASHER (nylon)	4
	505-2582	WASHER (nylon)	4
2	91-8108	BRACKET - frame	1
	55-7341	SCREW - bracket	3
	55-6988	WASHER	6
	55-9541	WASHER (nylon)	6
	55-7339	NUT	3
3	98-6236	PLATE - cable storage (front, 800B/C/D)	1
	91-9504	PLATE - cable storage (CRR40)	1
	55-9168	NUT	2
	55-9054	WASHER (nylon)	6
	55-6994	SCREW - plate	2
	51-167	FLATWASHER	6
	55-8933	WASHER (nylon)	6
4	91-9912	ORIFICE - condenser	1
	55-7035	SCREW - orifice	4
	55-7075	FLATWASHER	4
	55-3045	WASHER - dome	4
	55-8849	NUT - captive	4
5	98-5925	GRILLE - condenser (800B/C/D/E)	1
	33-3043	EXTRUSION (6.25 ft)	1
	55-6994	SCREW - grille	4
	51-167	FLATWASHER	4
	55-9054	WASHER (nylon)	4
6	98-6518	DOOR - evaporator	1
	92-2995	• HINGE - evap door	2
	51-620	• RIVET - hinge	8
7	91-9040	• KNOB	2
8	55-7035	• SCREW - door	2
9	91-8199	• SPRING	2
10	55-7354	• NUT	2
11	55-9054	• WASHER (nylon)	2
12	91-9041	• LATCH - door	2
	55-2864	• RIVET - latch	4
13	91-8134	• INSULATOR - latch	2
14	509-1654	• HINGE	2
	55-9313	• SCREW - hinge (TIR seal)	4
	55-9541	• WASHER (nylon)	4



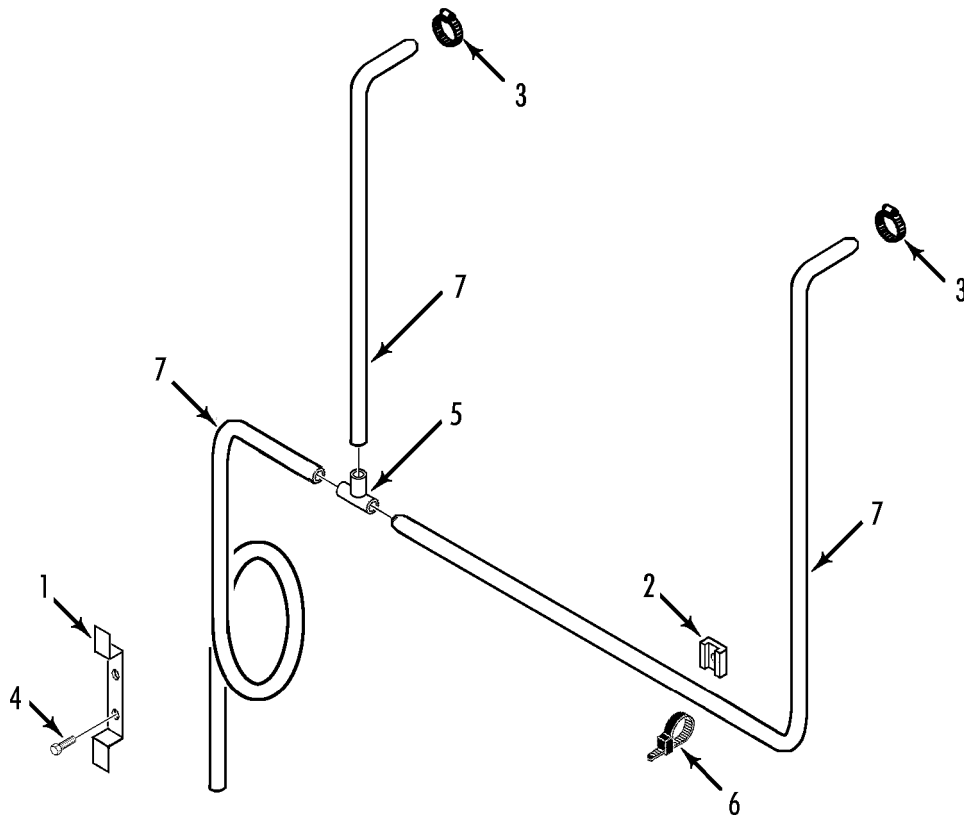


REF	PART#	DESCRIPTION	QTY
	55-7085	• FLATWASHER	4
15	91-8256	• PIN - hinge (w/ snap)	2
16	92-891	BRACKET - safety hook (800B/C/D)	1
	55-9541	SCREW - bracket	4
	55-7085	FLATWASHER	4
	55-9541	WASHER	8
17	98-5932	FRAME - condenser (CRR 40-300)	1
	98-5921	FRAME - condenser (800B)	1
	98-6238	FRAME - condenser (800C)	1
	98-6239	FRAME - condenser (800D)	1
	98-6663	FRAME - condenser (CRR40)	1
18	33-3969	GASKET - evaporator door	1
19	91-8475	NAMEPLATE - TK	1
20	33-2983	GASKET - unit	1
21	91-8728	COVER (instead of thermometer)	1
	55-7391	SCREW - cover	3
	55-6988	FLATWASHER	3
22	91-8664	PLATE - guard	1
	55-7341	SCREW - plate (20 mm)	2
	55-6993	SCREW - plate (25 mm)	1
	55-8953	WASHER (nylon)	3
23	91-9039	HOOK - strap	1
	55-3065	CLAMP - hook	1
	55-9166	SCREW - clamp	1
24	509-937	STRAP - door	1
	55-9173	SCREW - strap	1
	55-7089	FLATWASHER	2



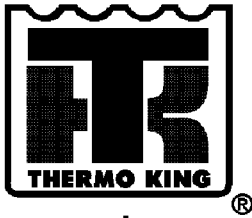


REF	PART#	DESCRIPTION	QTY
1	98-5772	PLATE - rear (bottom)	1
	98-6240	PLATE - rear (bottom, painted, 800B/C/D)	1
2	98-5773	PLATE - rear (top, CRR 40-300)	1
	55-3136	RIVET - plate	29
	98-5924	PANEL - rear (top, CRR 40-800B/C/D)	1
	55-9166	SCREW - panel	23
	55-9444	WASHER	23
3	98-5923	GRILLE - evaporator	1
	55-2264	RIVET - grille	17
4	92-427	CHANNEL - Z	5
	55-9055	RIVET - channel	21
5	33-2983	GASKET - unit	1
6	92-428	PANEL - USDA receptacle	1
	55-9055	RIVET - panel	4
7	91-9329	CHANNEL - air	1
	203-389	SEALER - polyurethane	A/R
	55-8891	SCREW - channel	6
8	91-9330	INLET - fresh air	1
	55-2270	RIVET - inlet	10
	203-389	SEALER - polyurethane	A/R
9	91-9331	CHANNEL - fresh air	1
	55-2270	RIVET - channel	8
10	92-722	PLATE - cover	1
	55-2262	RIVET - plate	6





REF	PART#	DESCRIPTION	QTY
1	91-8244	BRACKET - hose	1
2	99-3281	MOUNT - cable tie	5
	55-2260	RIVET - anchor	5
3	55-2686	CLAMP - hose	2
4	55-8891	SCREW - bracket	2
5	55-9208	CONNECTOR - T-hose	1
6	55-2330	BANDWRAP	6
7	11-8983	HOSE - flex	1



1

INGERSOLL-RAND

2

THERMO KING

4

CAUTION
COMPRESSOR MAY SOFT START
3 ON / OFF CYCLES
REFERENCE SERVICE MANUAL
PN: 1B16660H01

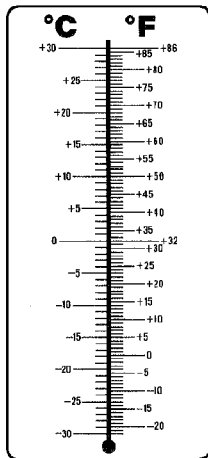
9



10



12



8

WARNING !
TURN POWER OFF
BEFORE DISCONNECTING
DATALOGGER OR
CONTROLLER.

11

MANUAL CONTROL
1. COOL 1 4. NOT IN USE
2. COOL 2 5. DEFROST
3. NOT IN USE 6. HEAT
PN: 1174
3AB22/0001
RECLA

13

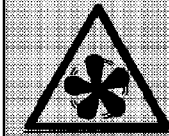
WARNING
CAUTION: TO PREVENT PERSONAL INJURY, THE COMPRESSOR MUST BE STOPPED BEFORE ANY MAINTENANCE OR REPAIR WORK IS PERFORMED ON THE UNIT.
1. Removal of power to the refrigerant unit.
2. Release of refrigerant to the service.
3. Release of the electrical control system to the manufacturer or repair shop.
4. Hold off under suitable personal safety protection. Reconnect after electrical work is done to the unit to be repaired or replaced. Do not return the unit to any working condition until the manufacturer or service shop is notified.
5. When the working operation is completed, do not power up the unit, plug and start button and be subject to the usual cautions.

17

R134a Compressor filled with ester oil

5

WARNING
FANS START
AUTOMATICALLY

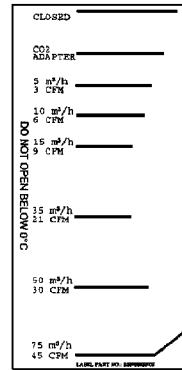


6

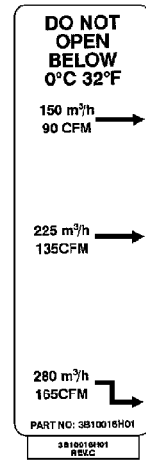
WARNING
Hot Components
Compressor discharge
may be hot!



7



14



15



16

Place
Temperature
sticker
here
Remove old sticker

18

Place PII stickers here
Kindly remove old sticker

19



Ingersoll-Rand

3



20



REF	PART#	DESCRIPTION	QTY
1	91-8475	NAMEPLATE - TK (crest)	1
2	91-8746	NAMEPLATE - Ingersoll Rand	1
3	92-4305	NAMEPLATE - IR logo (red/black)	1
4	91-8756	NAMEPLATE - Thermo King	1
5	91-5459	NAMEPLATE - R134a	1
6	91-8694	NAMEPLATE - Warning, Fan Start	1
7	91-8695	NAMEPLATE - Warning, Hot Components	1
8	509-1653	NAMEPLATE - Temperature Conversion	1
9	91-7475	NAMEPLATE - Compressor	1
10	99-7834	NAMEPLATE - Caution	1
11	91-9382	NAMEPLATE - Warning	1
12	91-9383	NAMEPLATE - Main Relay Board	1
13	91-9384	NAMEPLATE - Main Relay Board	1
14	91-8107	NAMEPLATE - Air Exchanger	1
15	91-9441	NAMEPLATE - Air Exchanger	1
16	91-8734	NAMEPLATE - USDA Connections	1
17	92-1218	NAMEPLATE - Weld	1
18	92-2968	NAMEPLATE - Temp (front)	1
19	92-2969	NAMEPLATE - Front, Temp	1
20	92-2970	NAMEPLATE - Front, Star	1

INDEX NUMERICAL BY PART NUMBER

104-689	6, 22	41-3603	30	51-620	38
104-691	8, 22	41-3605	32	55-2074	26
11-8983	44	41-3608	26	55-2159	14
203-389	42	41-3685	8, 22	55-2173	14
203-509	26	41-3687	28	55-2260	44
203-516	14	41-3688	28	55-2262	42
22-1186	14	41-3702	28	55-2264	42
22-398	14	41-3703	28	55-2265	34
309-3066	28	41-3849	8	55-2270	34, 42
33-2175	14	41-3851	26	55-2296	12
33-2218	14	41-4015	22	55-2330	44
33-2223	14	41-4016	34	55-2686	44
33-2510	14	41-4018	22	55-2747	14
33-2548	14	41-4142	30	55-2864	38
33-2944	36	41-4300	22	55-3045	6, 38
33-2946	8	41-5104	32	55-3065	40
33-2949	10	41-5420	18	55-3136	42
33-2954	6	41-5460	10, 12, 16, 20	55-3272	26
33-2983	40, 42	41-5635	22	55-3490	14
33-3007	10	41-890	34	55-4390	10
33-3043	26, 38	44-8688	26	55-5025	14
33-3044	8	45-1791	22	55-5257	14, 26
33-3215	8, 28	45-1927	22	55-5885	26
33-3838	8, 28	45-1942	22	55-6218	10
33-3969	40	45-1992	22	55-6988	6, 38, 40
33-4255	36	503-230	14	55-6993	6, 8, 40
33-981	14	503-291	18	55-6994	28, 38
40-782	16, 20	504-514	26	55-6995	10, 26, 38
40-791	22	504-922	16	55-6997	6
41-1976	22	504-970	26	55-7033	28, 30
41-2399	16, 20	504-977	16	55-7034	28, 30
41-2405	34	504-980	18	55-7035	6, 38
41-2406	34	505-2582	38	55-7042	26, 32
41-2603	18	505-408	26	55-7066	8
41-2716	14	505-416	26	55-7075	24, 28, 32, 36, 38
41-2832	26	505-511	30	55-7085	8, 40
41-2835	30	505-566	26	55-7089	40
41-2838	22	505-603	10	55-7169	28
41-2953	6, 22	506-161	14	55-7170	24
41-3107	34	506-165	14	55-7172	24, 26, 36
41-3276	26	506-364	10	55-7339	8, 36, 38
41-3277	22	506-369	10	55-7341	38, 40
41-3301	16, 20	506-370	10	55-7342	8
41-3302	14, 22	506-375	10	55-7344	24
41-3303	16	509-1635	10	55-7354	38
41-3317	32	509-1653	46	55-7357	22
41-3335	28, 30	509-1654	38	55-7360	14
41-3401	22	509-937	40	55-7372	32
41-3402	26	509-955	26	55-7378	32
41-3430	26	51-1426	36	55-7391	40
41-3585	34	51-1427	36	55-7404	32
41-3592	16, 20	51-1428	36	55-7407	30
41-3594	14	51-1429	36	55-7697	34
41-3595	26	51-1430	36	55-7713	34
41-3596	26	51-1431	36	55-7843	10
41-3597	26	51-1474	36	55-8410	34
41-3598	26	51-167	36, 38	55-8849	38
41-3599	26	51-270	22	55-8877	26
41-3602	30	51-619	32, 36	55-8882	6

INDEX NUMERICAL BY PART NUMBER

55-8891	8, 10, 42, 44	66-9035	12	91-8695	46
55-8903	8	66-9062	12	91-8728	40
55-8907	6, 8, 26	66-9075	12	91-8734	46
55-8908	6, 8	66-9125	10	91-8746	46
55-8910	10	66-9149	14	91-8756	46
55-8919	30	66-9163	10, 18, 22	91-9039	40
55-8933	36, 38	66-9164	12	91-9040	38
55-8938	10	66-9165	12	91-9041	38
55-8950	10	66-9167	12, 16, 22	91-9048	36
55-8951	10	66-9168	10, 20, 22	91-9273	32
55-8953	40	66-9195	20	91-9328	8
55-9037	14	66-9377	14	91-9329	42
55-9054	10, 28, 36, 38	66-9866	20	91-9330	42
55-9055	42	66-9867	16	91-9331	42
55-9162	8	66-9868	10, 12	91-9380	30
55-9164	22	66-9893	10	91-9381	30
55-9166	26, 32, 40, 42	66-9894	10	91-9382	30, 46
55-9168	36, 38	66-9900	12	91-9383	30, 46
55-9173	40	66-9953	20	91-9384	46
55-9208	44	67-1558	12	91-9441	46
55-9217	8	67-1650	10	91-9504	38
55-9312	38	67-1673	8	91-9754	22
55-9313	38	67-1726	10	91-9833	26
55-9323	34	67-1800	10	91-9912	6, 38
55-9380	6	77-1401	22	91-9913	32
55-9392	30	77-1498	22	91-9976	30
55-9393	30	77-2467	36	92-1218	46
55-9395	30	78-1117	8	92-2331	8
55-9396	32	78-1173	6	92-2332	8
55-9401	28	8102-743	10, 14, 22	92-236	26
55-9444	26, 30, 42	845-1898	30	92-237	26
55-9445	28	845-1909	30	92-238	26
55-9541	36, 38, 40	845-2834	26	92-239	26
61-149	16	91-5459	46	92-243	34
61-2223	20, 22	91-7475	46	92-244	26
61-2228	22	91-8100	36	92-270	22
61-2351	20	91-8102	36	92-2777	22
61-681	20	91-8103	36	92-2968	46
61-695	10	91-8104	36	92-2969	46
61-696	10	91-8105	36	92-2970	46
61-697	10	91-8106	36	92-2995	38
61-723	12	91-8107	36, 46	92-411	36
61-724	12	91-8108	38	92-425	8
61-725	12	91-8134	38	92-427	42
61-726	10	91-8140	22	92-428	42
61-727	10	91-8142	22	92-4305	46
61-728	10	91-8195	38	92-440	36
66-1845	14	91-8199	38	92-722	42
66-2457	14	91-8244	44	92-860	26
66-6607	14	91-8252	36	92-891	40
66-6610	12, 14	91-8256	40	98-5454	28
66-7182	12, 14	91-8466	8	98-5768	8
66-7183	14	91-8467	22	98-5772	42
66-8367	20	91-8475	40, 46	98-5773	42
66-8467	10	91-8620	10	98-5921	40
66-8721	20	91-8645	34	98-5923	42
66-8811	10	91-8663	36	98-5924	42
66-9015	10	91-8664	40	98-5925	38
66-9032	12, 16, 22	91-8694	46	98-5932	40

INDEX NUMERICAL BY PART NUMBER

98-6236	38
98-6238	40
98-6239	40
98-6240	42
98-6518	38
98-6663	40
99-3281	44
99-3685	34
99-4931	8
99-7834	46

INDEX NUMERICAL BY PART NUMBER

INDEX ALPHABETICAL BY DESCRIPTION

A

ACTUATOR **18**
ADAPTER - discharge **14**
ADAPTER - hose **36**
ADAPTER - push-on **30**
ADAPTER - service **12, 14**

B

BANDWRAP **44**
BATTERY **26**
BEARING - opposite end **22**
BEARING - shaft end **22**
BEARING - slide **36**
BLOCK - coil **8**
BLOCK - terminal **26, 28**
BOARD - relay **26**
BOOT - circuit breaker **26**
BOOT - switch **26**
BOX - control **22, 28**
BRACKET **26**
BRACKET - air vent handle **36**
BRACKET - cable restraint **22**
BRACKET - diagram **26**
BRACKET - frame **38**
BRACKET - hand valve **10**
BRACKET - handle **36**
BRACKET - heater **22**
BRACKET - hose **44**
BRACKET - left **8**
BRACKET - motor **8**
BRACKET - power cable **22**
BRACKET - right **8**
BRACKET - safety hook **40**
BRACKET - valve **10**
BREAKER - circuit **26, 32**

C

CABLE - battery **28**
CABLE - compressor **22**
CABLE - compressor power **14**
CABLE - connecting **30**
CABLE - power **22**
CABLE - retriever plug **26**
CAP - adapter **12, 14**
CAP - discharge valve **14**
CAP - dust **34**
CAP - fitting **14**
CAP - plug **26**
CAP - screw **8**
CAP - suction valve **14**
CHAIN - cap **34**
CHANNEL - air **42**
CHANNEL - fresh air **42**
CHANNEL - Z **42**
CLAMP - dehydrator **10**
CLAMP - hook **40**
CLAMP - hose **44**
CLIP - relay **26**
COIL **10, 12, 20**

COIL - condenser **10**
COIL - evaporator **8, 12**
COIL - liquid line valve **20**
COIL - valve **16, 20**
COLLAR **14**
COMPRESSOR **10, 14, 22**
CONNECTOR **30**
CONNECTOR - cross **28**
CONNECTOR - harness & sensor **8**
CONNECTOR - liquid tite **22, 26**
CONNECTOR - plug **26, 34**
CONNECTOR - receptacle **34**
CONNECTOR - T-hose **44**
CONTACTOR **32**
CONTROLLER **30**
COUPLING **14**
COVER **40**

D

DEHYDRATOR **10**
DISK - air vent **36**
DOOR - control box **30**
DOOR - controller **26**
DOOR - evaporator **38**

E

EXTRUSION **38**

F

FAN - condenser **6**
FAN - evaporator **8**
FITTING - gland **6**
FITTING - harness **14, 26**
FITTING - service **14**
FLATWASHER **8, 10, 14, 22, 24, 28, 32, 34, 36, 38, 40**
FRAME - condenser **40**
FUSE **26**

G

GASKET **10, 18**
GASKET - air vent **36**
GASKET - coil **10**
GASKET - cover **26**
GASKET - cylinder head **14**
GASKET - discharge **14**
GASKET - evaporator door **40**
GASKET - sight glass **14**
GASKET - suction **14**
GASKET - unit **40, 42**
GASKET - valve **14**
GASKET - valve plate **14**
GRILLE - condenser **38**
GRILLE - evaporator **42**
GROMMET **8, 28**
GROMMET - harness **6**

H

HANDLE - air vent **36**

HANGER - dehydrator **10**
HARNESS **18**
HARNESS - condenser fan **6, 22**
HARNESS - evaporator **22**
HARNESS - evaporator fan **22**
HARNESS - fan **8**
HARNESS - sensor **22**
HEAT EXCHANGER **10**
HEATER **22**
HINGE **38**
HINGE - air vent **36**
HINGE - cover **26**
HINGE - door **30**
HINGE - evap door **38**
HOLDER - fuse **26**
HOOK - strap **40**
HOSE - flex **44**
HOUSING - evaporator **8**

I

INLET - fresh air **42**
INSULATOR **26**
INSULATOR - hinge **30**
INSULATOR - latch **38**

K

KEEPER - door latch **38**
KEYPAD **30**
KIT - reed suction **14**
KIT - repair **16**
KIT - sensor **22**
KIT - valve plate **14**
KNOB **38**
KVQ - actuator **10**

L

LABEL - dehydrator **10**
LATCH - door **38**
LOCKWASHER **8, 14, 24, 26, 30, 32, 36**

M

MODEM - RMM **30**
MOTOR - condenser **22**
MOTOR - condenser fan **6**
MOTOR - fan **8, 22**
MOUNT - cable tie **44**

N

NAMEPLATE - Air Exchanger **46**
NAMEPLATE - arrow **8**
NAMEPLATE - Caution **26, 46**
NAMEPLATE - Compressor **46**
NAMEPLATE - Controller Warning **30**
NAMEPLATE - data download USDA **34**
NAMEPLATE - Do Not Open Below 0 C **36**
NAMEPLATE - Front, Star **46**

INDEX ALPHABETICAL BY DESCRIPTION

NAMEPLATE - Front, Temp **46**
NAMEPLATE - Ingersoll Rand **46**
NAMEPLATE - IR logo **46**
NAMEPLATE - Main Relay Board **46**
NAMEPLATE - on/off **26**
NAMEPLATE - Phase Select **30**
NAMEPLATE - R134a **46**
NAMEPLATE - Relay Board **30**
NAMEPLATE - Temp **46**
NAMEPLATE - Temperature
Conversion **46**
NAMEPLATE - Thermo King **46**
NAMEPLATE - TK **40, 46**
NAMEPLATE - USDA Connections **46**
NAMEPLATE - Warning **46**
NAMEPLATE - Warning, Fan Start **46**
NAMEPLATE - Warning, Hot
Components **46**
NAMEPLATE - Weld **46**
NUT **6, 8, 14, 24, 26, 28, 30, 32, 36,**
38
NUT - captive **6, 38**
NUT - controller **30**
NUT - fitting **6**
NUT - shoulder **10**
NUT - speed **26**
NUT - wing **36**
NUTSTRIP - motor **8**

O

OIL - compressor **14**
ORIFICE - condenser **38**
ORIFICE - condenser fan **6**

P

PANEL - rear **42**
PANEL - USDA receptacle **22, 34, 42**
PIN - hinge **36, 40**
PLATE - air vent **36**
PLATE - bottom **32**
PLATE - cable storage **38**
PLATE - cover **42**
PLATE - end terminal **28**
PLATE - guard **40**
PLATE - rear **42**
PLUG - fusible **10**
PLUG - power **22**
PLUG - seal **26, 28**
POCKET - sensor **22**
PROBE - high temperature **14**
PROTECTOR - edge **36**

R

RAIL - din **32**
RAIL - terminal block **28**
RECEPTACLE **34**
RELAY - power **26**
RETAINER - screw **30**
RIVET - anchor **44**

RIVET - bracket **26**
RIVET - cap **34**
RIVET - channel **42**
RIVET - grille **42**
RIVET - hinge **38**
RIVET - inlet **42**
RIVET - latch **38**
RIVET - panel **34, 42**
RIVET - plate **42**
RIVET - plug **26**
RIVET - receptacle **34**
RIVET - shroud **8**

S

SCREW **32, 36**
SCREW - adapter **14**
SCREW - bracket **8, 10, 24, 26, 38, 40,**
44
SCREW - cable **22**
SCREW - channel **42**
SCREW - clamp **40**
SCREW - coil **8, 10**
SCREW - collar **14**
SCREW - compressor **14**
SCREW - control box **28**
SCREW - cover **40**
SCREW - door **30, 38**
SCREW - grille **38**
SCREW - handle **36**
SCREW - hinge **26, 30, 38**
SCREW - keeper **38**
SCREW - motor **6, 8**
SCREW - motor **6, 38**
SCREW - panel **42**
SCREW - plate **36, 38, 40**
SCREW - plate to box **32**
SCREW - rail **28**
SCREW - relay board **26**
SCREW - strap **40**
SCREW - transformer **32**
SCREW - valve **10**
SCREW - vent **36**
SEALER - polyurethane **42**
SENSOR - compressor **22**
SENSOR - humidity **22**
SENSOR - thermistor **34**
SHOULDER - seal **10**
SIGHT GLASS **10**
SIGHT GLASS - oil **14**
SPRING **36, 38**
SPRING - heater **22**
STRAP - door **40**
SWITCH - hpco **14, 22**
SWITCH - unit on/off **26**

T

TANK - receiver **10**
TEE **10, 12**
TERMINAL - stop clip **28**

THERMOSTAT - defrost termination
22
TRANSFORMER **32**
TRAY - high voltage **28**
TRIM - edge guard **8**
TUBE **12**
TUBE - condenser to indicator **10**
TUBE - condenser to receiver **10**
TUBE - discharge **10**
TUBE - equalizer **12**
TUBE - evaporator to exchanger **10**
TUBE - exchanger to KVQ **10**
TUBE - heat exchanger to dehydrator
10
TUBE - indicator to drier **10**
TUBE - KVQ to compressor **10**
TUBE - receiver to condenser **10**
TUBE - solenoid to KVQ **10**
TUBE - tee to coil **12**
TUBE - tee to valve **12**
TUBE - valve replacement **12**
TUBE - valve to coil **12**
TUBE - valve to exchanger **12**
TUBE - valve to tee **10, 12**

V

VALVE - bypass **20**
VALVE - check **10**
VALVE - dehumidifier **16**
VALVE - discharge **14**
VALVE - expansion **12**
VALVE - KVQ **18, 22**
VALVE - liquid injection **20, 22**
VALVE - liquid line **16**
VALVE - shutoff **10**
VALVE - solenoid **10, 12, 22**
VALVE - solenoid, liquid injection **22**
VALVE - suction **14**
VALVE - warm gas bypass **20**
VENT - air **36**

W

WASHER **6, 10, 26, 30, 36, 38, 40, 42**
WASHER - dome **6, 38**
WASHER - insulating **26, 30**
WASHER - insulator **28, 32, 36**